

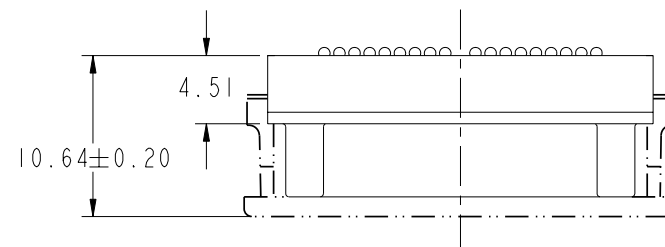
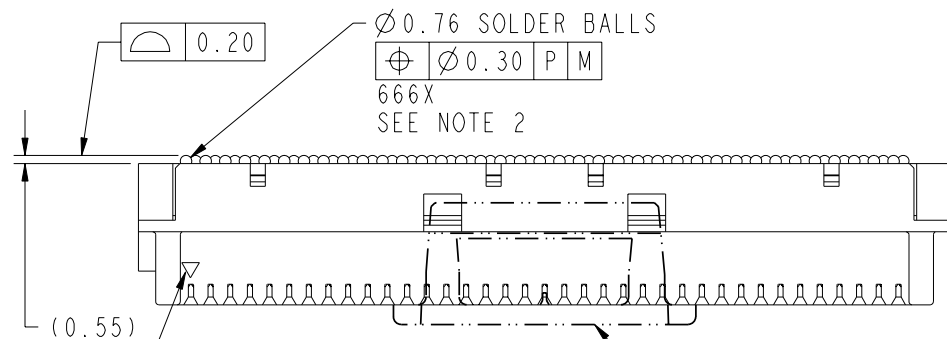


This document is the property of and embodies
CONFIDENTIAL and PROPRIETARY information of FCI.
No part of the information shown on this
document may be used in any way or disclosed
to others without the written consent of FCI.
Copyright FCI.

1 | 2

3 |

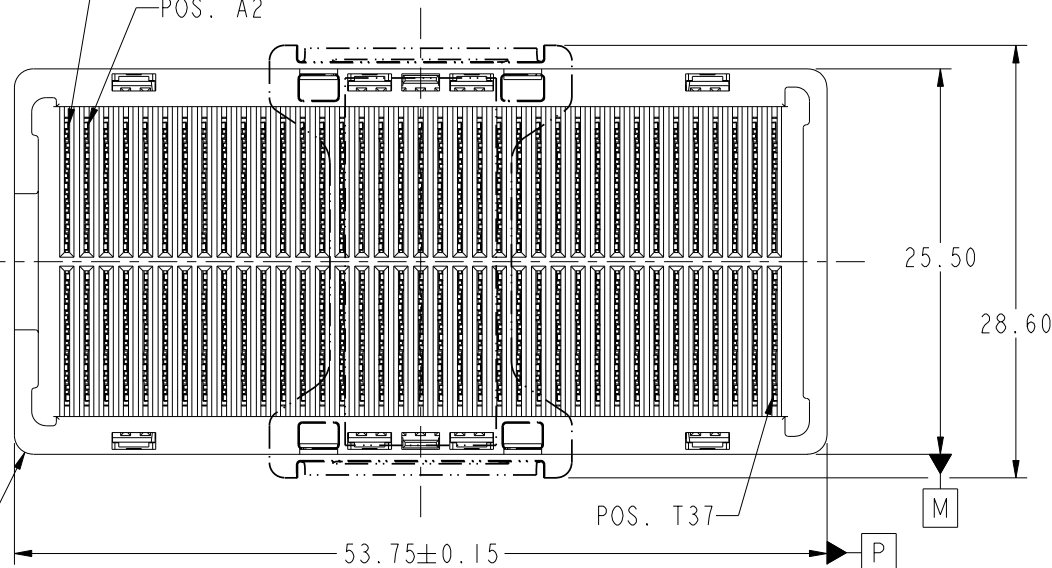
4


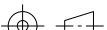
POS. A1
MARKER

PICK-UP CAP

POS. A1

POS. A2

R1.25
4X

mat'l code				SEE NOTE 1				tolerances unless otherwise specified				CUSTOMER				 www.fciconnect.com				
ltr	ecn no.		dr	date		linear	0.X ± 0.3				COPY									
H	V08-0489		SM	2008-11-19			0.XX ± 0.10				projection									
-	-		-	-			0.XXX ± 0.050				MM									
C	V03-1036		TAB	2003-09-15		angles	0° ± 2°				scale				2:1					
D	V05-0052		VS	2005-10-14		dr	R. JOHNSON 2001-03-05				product family				GIG-Array				code	
E	V06-0435		LP	2006-05-08		enrg	D. JOHNESEU 2001-01-09				size				dwg no		213			
F	V06-0558		LP	2006-06-21		chr	J. SHAFFER 2001-05-04				sheet				1 of 4					
G	V08-0176		HTB	2008-04-08		appd	D. JOHNESEU 2001-05-04													
sheet index		revision sheet		H	H	H	H													
				1	2	3	4													

Pro/E

PDM: Rev:H

STATUS: Released

Printed: Dec 11, 2008

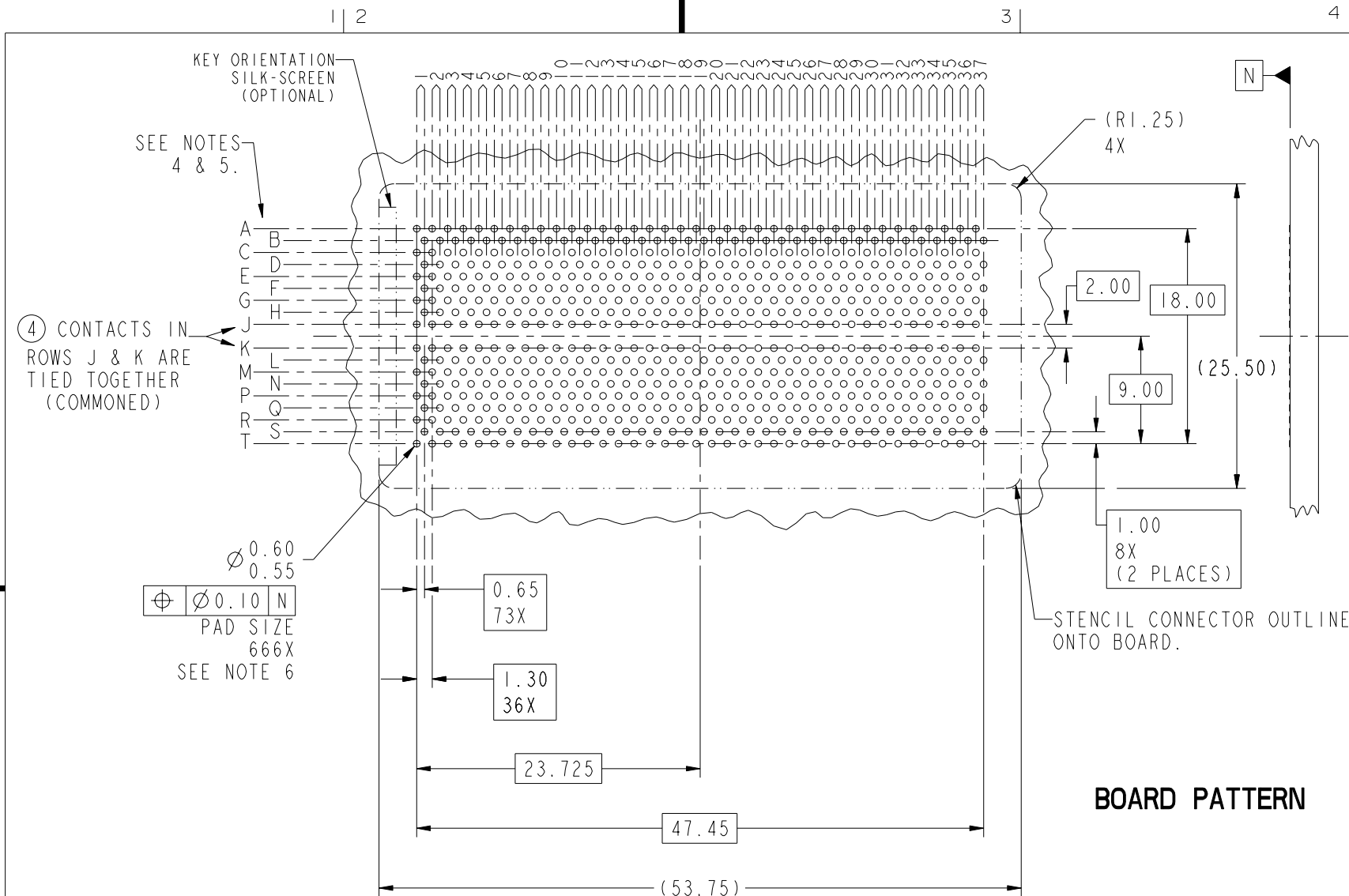
1 | 2




3 |

4



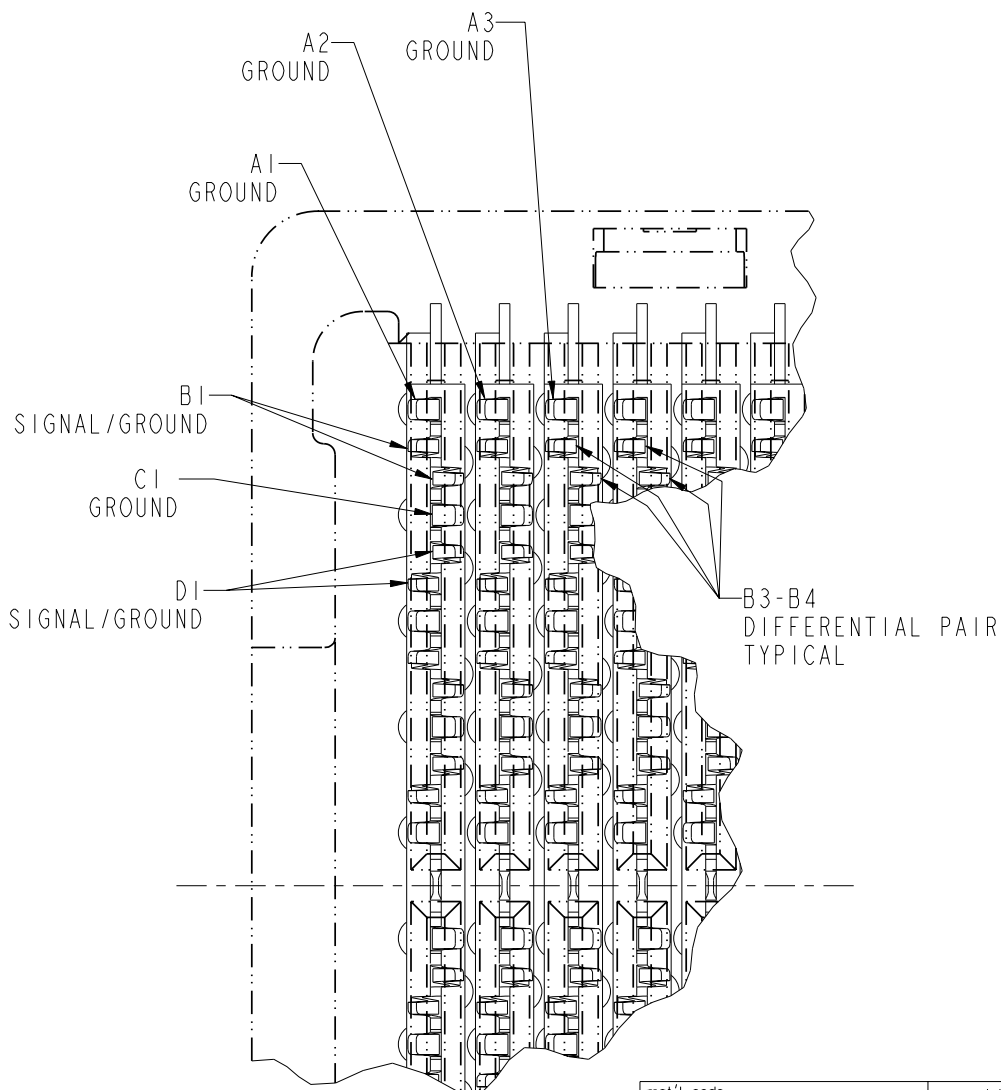
This document is the property of and embodies
CONFIDENTIAL and PROPRIETARY information of FCI.
No part of the information shown on this
document may be used in any way or disclosed
to others without the written consent of FCI.
Copyright FCI.



mat'l code				SEE NOTE 1				tolerances unless otherwise specified				CUSTOMER				 www.fciconnect.com							
ltr	ecr no.	dr	date	linear	0.X ±0.3				projection 	COPY				title GIG-Array 5mm RECP. ASSY. 296 SIG. POS.									
H					0.XX ±0.10					 MM													
					0.XXX ±0.050																		
				angles	0° ±2°				scale 2:1	product family GIG-Array				size dwg no 55701				code 213 sheet 2					
			dr	R. JOHNSON 2001-03-05																			
			enr	D. JOHNE SCU 2001-01-09																			
			chr	J. SHAFFER 2001-05-04																			
			appd	D. JOHNE SCU 2001-05-04																			
sheet index		revision sheet																					



This document is the property of and embodies
CONFIDENTIAL and PROPRIETARY information of FCI.
No part of the information shown on this
document may be used in any way or disclosed
to others without the written consent of FCI.
Copyright FCI.



RECEPTACLE INTERFACE DESCRIPTION

NOTES:

- MATERIAL:**
HOUSING: LCP
CONTACT: COPPER ALLOY
PLATING (CONTACT): Au OVER Ni.
UL RATING: 94 V-0
SOLDER BALL: (SEE TABLE) EUTECTIC
SnPb OR LEADFREE 95.5 Sn/4Ag/0.5Cu
- SOLDER BALLS WILL NOT BE PERFECT
SPHERICAL SHAPE DUE TO REFLOW ATTACHMENT.
- MATED HEIGHT EFFECTED BY CUSTOMERS'
PCB PAD SIZE, PLATING, SOLDER REFLOW
PROFILE & SOLDER PASTE.
- CONTACTS IN ROWS A,C,E,G,J,K,M,P,R AND T
ARE SINGLE BEAM CONTACTS,
TYPICALLY USED AS GROUND PINS.
(NOTE: CONTACTS IN ROWS J & K ARE
TIED TOGETHER [COMMONED])
- CONTACTS IN ROWS B,D,F,H,L,N,Q AND S
ARE DUAL BEAM CONTACTS,
TYPICALLY USED AS SIGNAL PINS.

mat'l code				SEE NOTE 1		tolerances unless otherwise specified		CUSTOMER		FCI			
ltr	ecr no.	dr	date					COPY		www.fciconnect.com			
H				linear		$0.X \pm 0.3$		projection		title			
						$0.XX \pm 0.10$				GIG-Array			
				angles		$0.XXX \pm 0.050$		$0^\circ \pm 2^\circ$		5mm RECP. ASSY. 296 SIG. POS.			
				dr	R. JOHNSON	2001-03-05		MM		product family			
				enrg	D. JOHNECU	2001-01-09				GIG-Array			
				chr	J. SHAFFER	2001-05-04		scale		code			
				appd	D. JOHNECU	2001-05-04		7:1		size			
sheet		revision								dwg no		213	
index		sheet								55701		sheet	
										3			

Pro/E

PDM: Rev:H

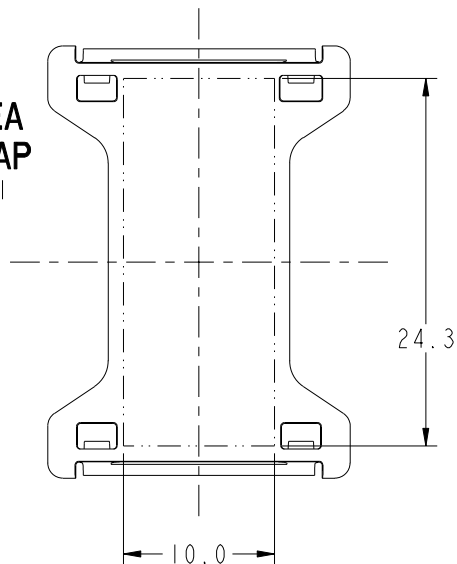
STATUS: Released
cage code 22526
Printed: Dec 11, 2008



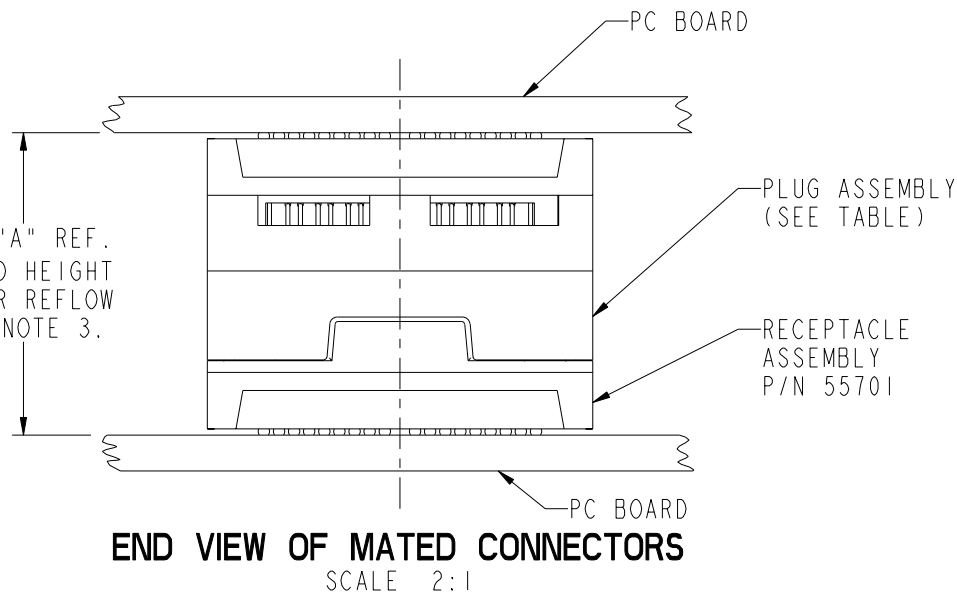
This document is the property of and embodies
CONFIDENTIAL and PROPRIETARY information of FCI.
No part of the information shown on this
document may be used in any way or disclosed
to others without the written consent of FCI.
Copyright FCI.

PRODUCT NUMBER	SOLDER BALL
55701-001	SnPb
55701-001LF	SnAgCu LEADFREE (7)(8)

FLAT AREA
PICK-UP CAP
SCALE 2:1



DIM "A" REF.
MATED HEIGHT
AFTER REFLOW
SEE NOTE 3.



NOTES CONTINUED

- ⑥ SPECIFIED POSITIONAL TOLERANCE DEFINES PAD TO PAD LOCATION WITHIN LAND PATTERN. POSITIONAL TOLERANCE OF LAND PATTERN TO FUDICIAL MARKS OR PCB DATUMS SHALL BE DEFINED BY CUSTOMER. FOR RECOMMENDED PRODUCT APPLICATION AND PCB DESIGN DETAILS, SEE DOC. NO. GS-20-016.
- ⑦ FOR PROPER APPLICATION FOLLOW FCI APPLICATION SPECIFICATION GS-20-033 LEADFREE SOLDER BALLS WILL NOT SOLDER PROPERLY IN A LEADED SOLDER PROCESS DUE TO A HIGHER REFLOW TEMPERATURE. LEADFREE PRODUCT IS THEREFORE NOT BACKWARDS COMPATIBLE WITH LEADED OR SOME SOLDERING APPLICATIONS. REFERENCE FCI APPLICATION SPECIFICATION.
- ⑧ THIS PRODUCT MEETS THE EUROPEAN UNION DIRECTIVES AND OTHER COUNTRY REGULATIONS AS DESCRIBED IN GS-22-008. PRODUCT MEETING WITH THIS DIRECTIVE IS IDENTIFIED IN THE LOT CODE NUMBER MARKED ON EACHPART BY HAVING AN "X" IN THE SEVENTH CHARACTER POSITION.

DIM. "A"	PLUG ASSEMBLY P/N
15	55720
17	10026804
18	10008026
20	55700
25	55727
30	10054784

mat'l code				SEE NOTE 1		tolerances unless otherwise specified		CUSTOMER		FCI			
ltr	ecr no.	dr	date	linear		0.X ±0.3		COPY		www.fciconnect.com			
H						0.XX ±0.10		projection		title			
						0.XXX ±0.050		MM		GIG-Array			
				angles		0° ±2°		MM		5mm RECP. ASSY. 296 SIG. POS.			
				dr	R. JOHNSON	2001-03-05		scale		product family		code	
				enrg	D. HARPER	2001-01-09		2:1		GIG-Array		213	
				chr	J. SHAFFER	2001-05-04				size		sheet	
				appd	D. JOHNSCU	2001-05-04				dwg no		4	
sheet index		revision sheet								A			

Pro/E

PDM: Rev:H

STATUS: Released

Printed: Dec 11, 2008