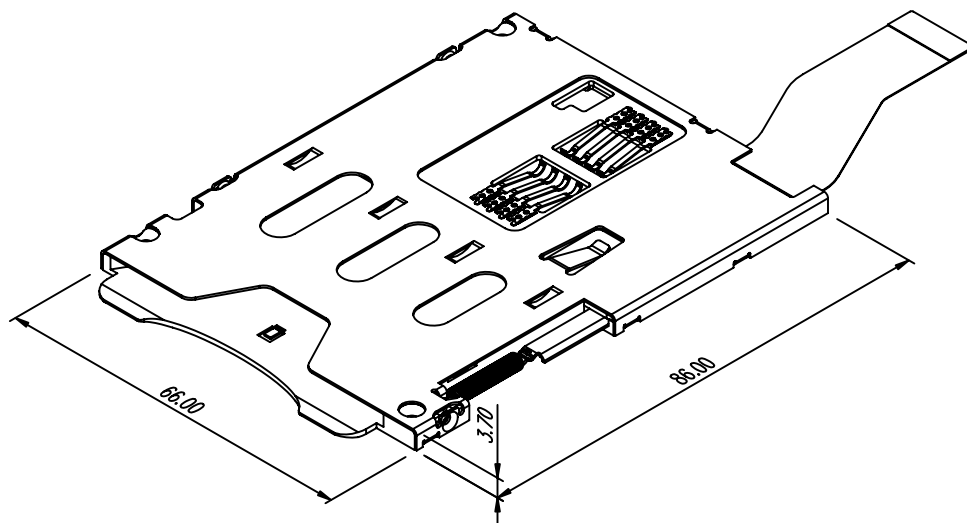


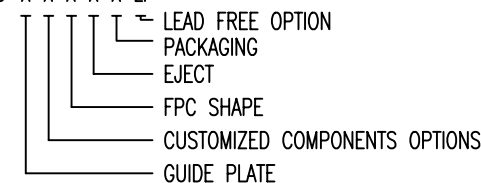


PRODUCT NO.	APPEARANCE	COMPONENTS	FPC	EJECT	PACKAGING	REMARK
55640-10101(LF)	BLUE	N/A	52534-002(LF)	55644-001	340391-001	
55640-11102(LF)	BLUE	56413-001	52534-002(LF)	55644-001	340391-101	
55640-12101(LF)	BLUE	55651-001	52534-002(LF)	55644-001	340391-001	
55640-23201(LF)	BLUE	10018024-001	52534-004(LF)	55644-001	340391-201	
55640-20201(LF)	BLUE	N/A	52534-004(LF)	55644-001	340391-201	
55640-20202LF	BLUE	10062236-001	52534-004(LF)	55644-001	10062267-02-001	
55640-23301(LF)	BLUE	10018024-001	52534-006(LF)	55644-001	340391-201	
55640-20211(LF)	BLUE	N/A	52534-004(LF)	55644-002	340391-201	DURABILITY CAN MEET 25000 CYCLES
55640-23401(LF)	BLUE	10018024-001	52534-007(LF)	55644-001	340391-201	



NOTE :

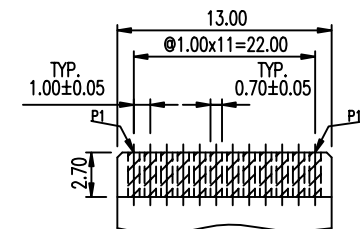
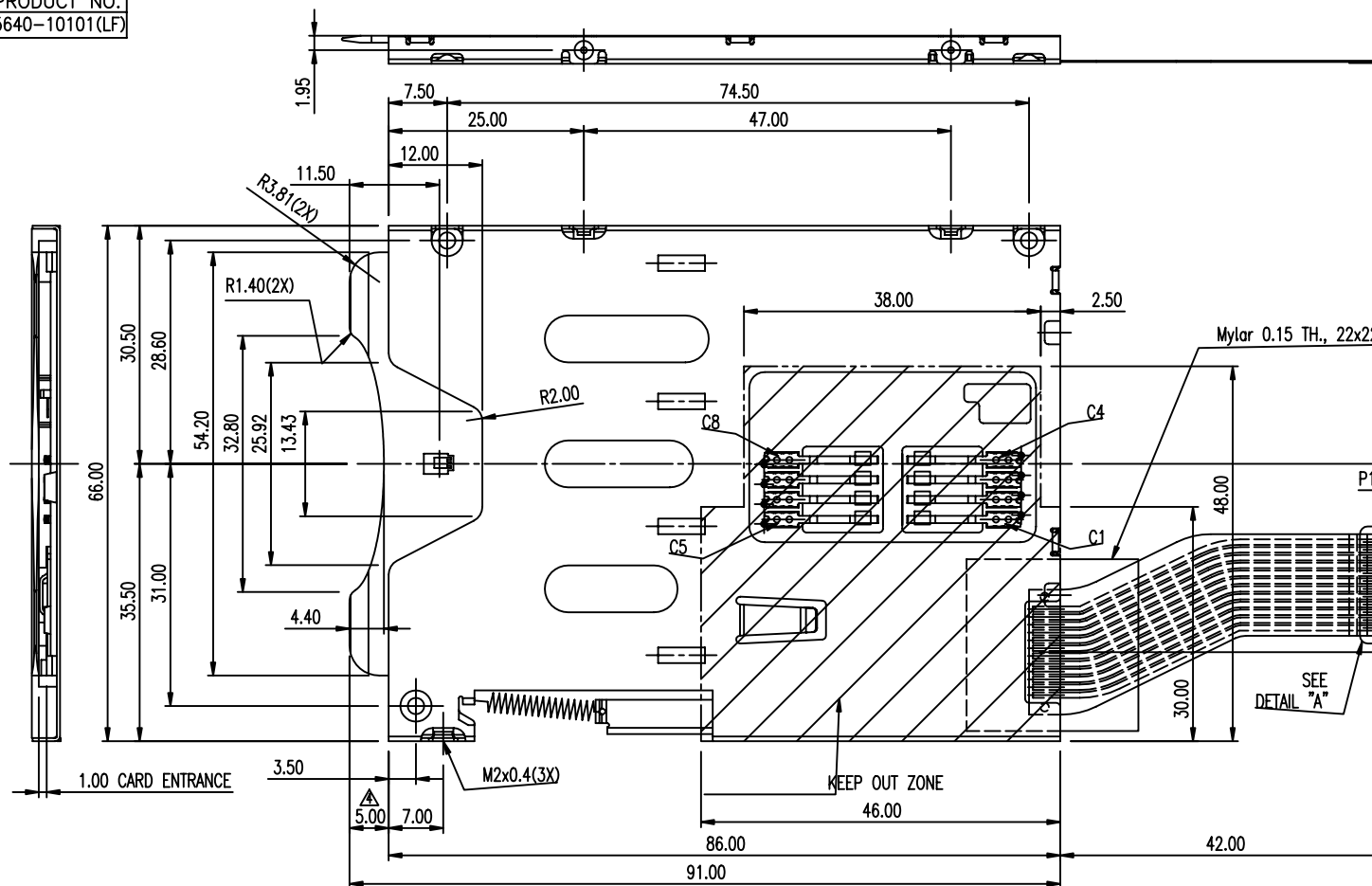
- SMART CARD READER FOR LOWER PROFILE HEIGHT OF 3.6 mm.
- TOTAL CIRCUIT RESISTANCE PER ONE LOOP SHALL NOT EXCEED 200 MILLIOHMS.
- THE INSERTION & EJECTING FORCE < 650g.
- MATERIALS :  
CONTACTS : COPPER ALLOY, GOLD OVER NICKEL ON CONTACT AREA.  
HOUSING : THERMOPLASTIC POLYCARBONATE.  
COVER : STAINLESS STEEL.
- ENVIRONMENT :  
STORAGE TEMPERATURE : FROM -40°C TO 85°C.  
OPERATION TEMPERATURE : FROM -20°C TO 70°C.
- ORDER DATAS : 55640-X X X X LF



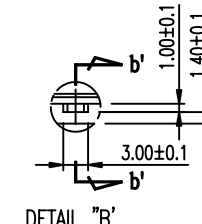
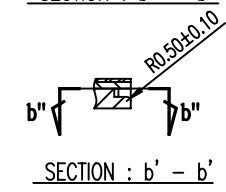
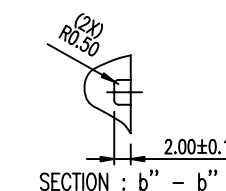
- IF LEAD FREE P/N, GS-14-920 SHOULD BE APPLIED.
- THIS PRODUCT MEETS EUROPEAN UNION DIRECTIVES AND OTHER COUNTRY REGULATIONS AS DESCRIBED IN GS-22-008.

mat'l. code				tolerances unless otherwise specified				CUSTOMER COPY		FCI	
ltr	ecn no.	dr	date								www.fciconnect.com
J	N08-0156	SH	08/01/08	linear	~ 10 ± 0.3			projection		title SMART PLUS B ASSEMBLY	
C	T15059	JSR	8/2/'01		10 ~ 100 ± 0.5						
D	T03-0063	JSR	10/23/'02	angles	100 ~ ± 0.8					product family SMARTPLUS	
E	T04-0219	TAI	05/20/'04	dr	0° ± 3°						
F	N05-0015	AILEI	01/20/05	enfr				mm		size dwg no 55640	
G	N05-0203	AILEI	07/11/05	chr				scale			
H	N05-0285	AILEI	10/24/05	appd				1 : 1		A3	
sheet	revision	H	G	G	G	G	G	H			
index	sheet	1	2	3	4	5	6	7		code 1 of 8	

PRODUCT NO.  
55640-10101(LF)

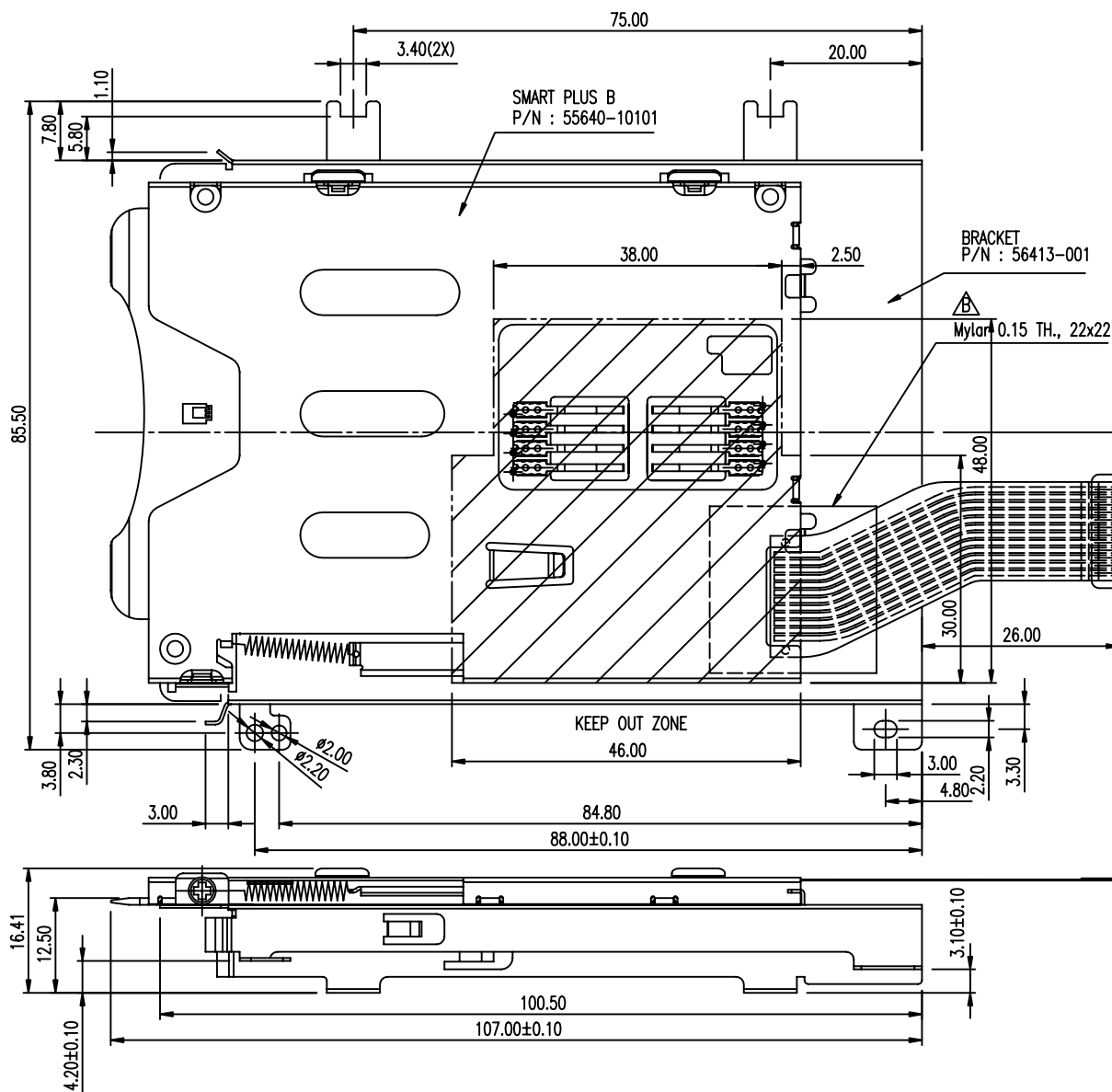
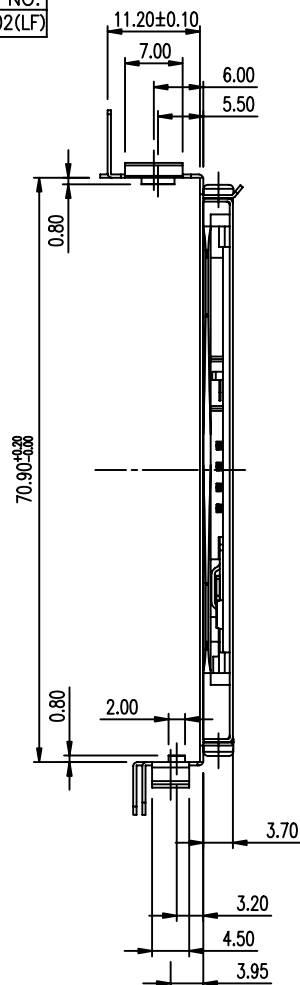


SMART CARD	FPC	FUNC.
C4	P1	RFU
C3	P2	Clock
C2	P3	Reset
C1	P4	Vcc
SENSOR 1	P5	SENSOR
	P6	Reserved
SENSOR 2	P7	SENSOR
C5	P8	Gnd
C6	P9	Vpp
C7	P10	I/O
C8	P11	RFU
	P12	Reserved



mat'l. code				tolerances unless otherwise specified		CUSTOMER COPY		www.fciconnect.com	
ltr	ecr no	dr	date	linear	~ 10 ± 0.3	projection	title		
J					10 ~ 100 ± 0.5	1	SMART PLUS B ASSEMBLY		
				angles	100 ~ ± 0.8		product family	code	
					0° ± 3°		size	sheet	
				dr	A. JUANG 9/4/'00	1	A3	2 of	
				engr	MINERVA WANG 9/4/'00	1	55640		
				chr	JOSEPH HSIA 9/4/'00	1			
				appd	JENN TSAO 9/4/'00	1			
sheet index	revision sheet					scale 1.5 : 1			

PRODUCT NO.  
55640-11102(LF)

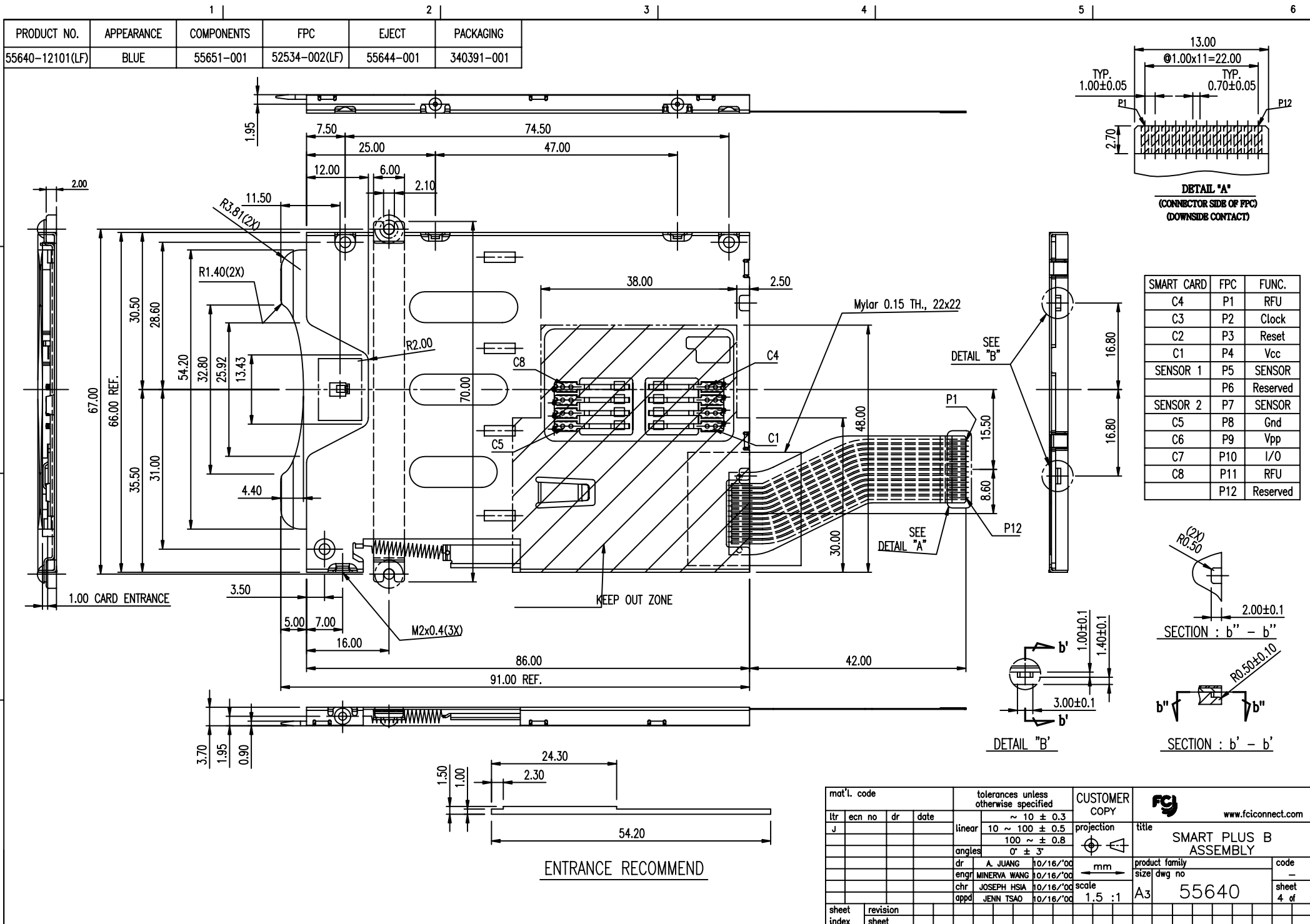


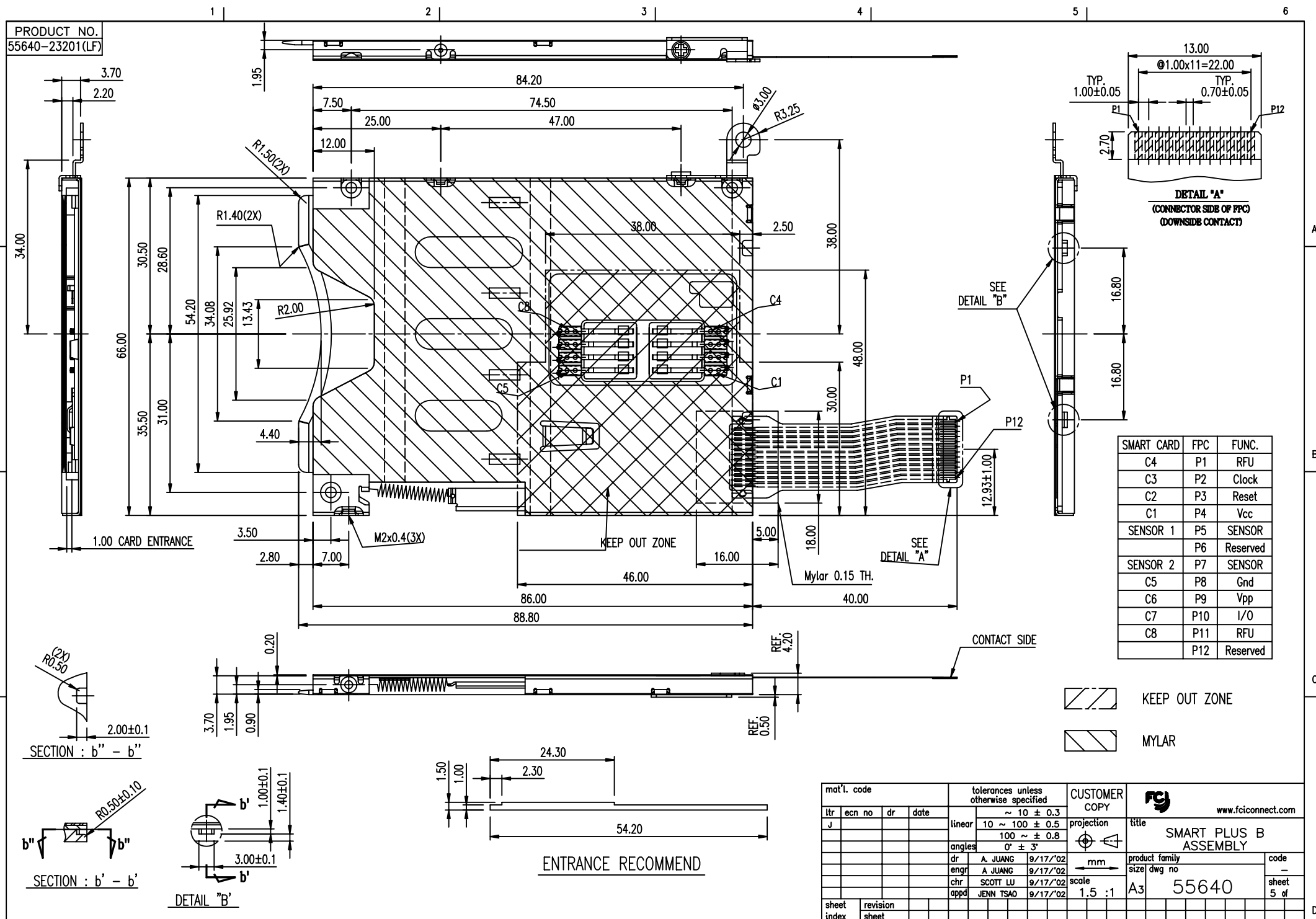
SMART CARD	FPC	FUNC.
C4	P1	RFU
C3	P2	Clock
C2	P3	Reset
C1	P4	Vcc
SENSOR 1	P5	SENSOR
	P6	Reserved
SENSOR 2	P7	SENSOR
C5	P8	Gnd
C6	P9	Vpp
C7	P10	I/O
C8	P11	RFU
	P12	Reserved

PRODUCT NO.	APPEARANCE	COMPONENTS	FPC	RESERVE	PACKAGING
55640-11102(LF)	BLUE	56413-001	52534-002(LF)	N/A	340391-101

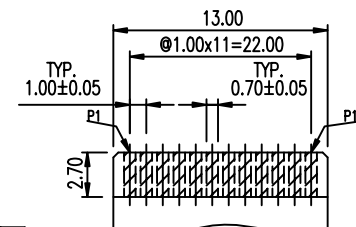
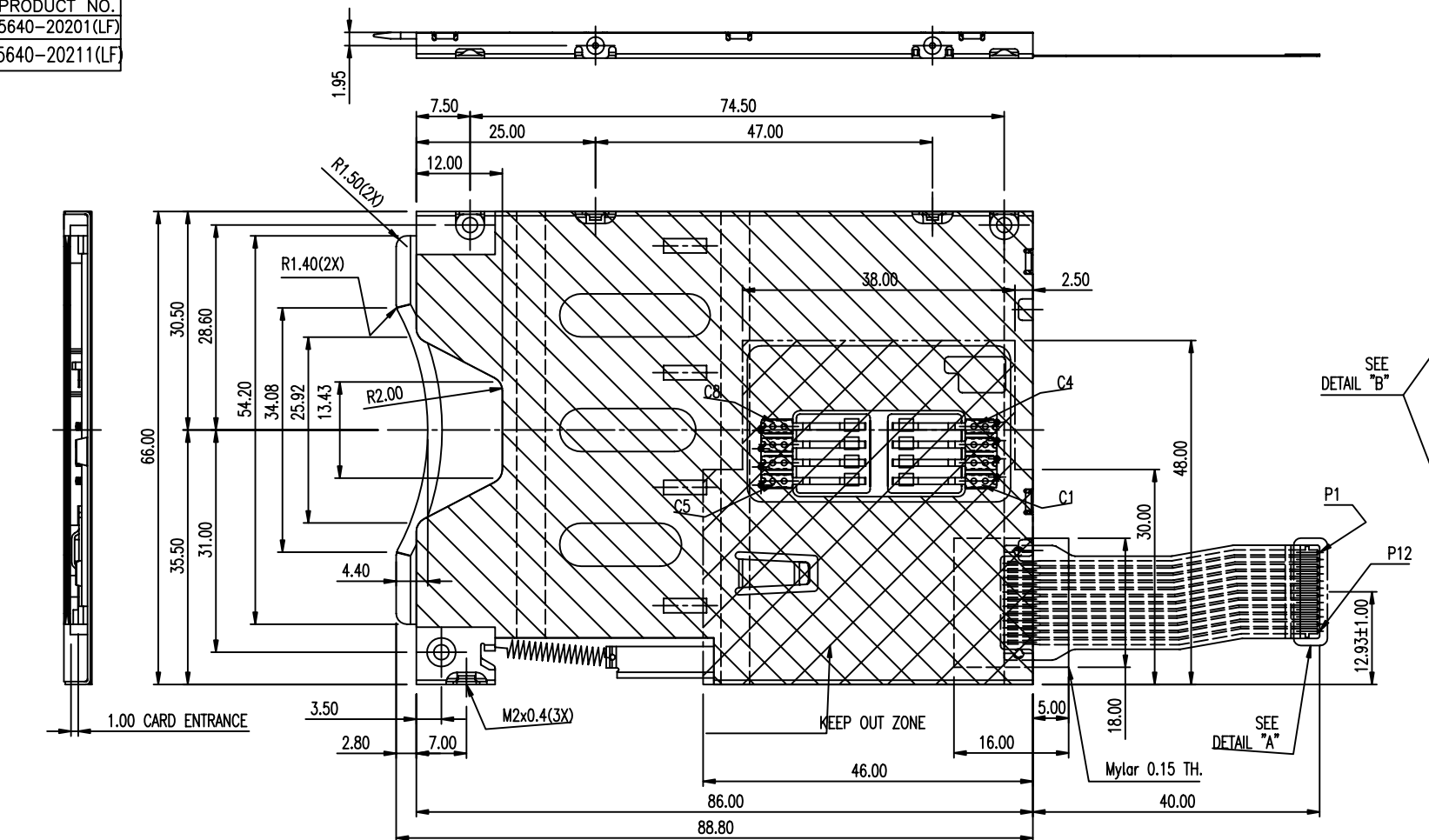
mat'l. code				tolerances unless otherwise specified		CUSTOMER COPY		FCI		www.fciconnect.com	
ltr	ecr no	dr	date	linear	~ 10 ± 0.3	projection	10 ~ 100 ± 0.5	title		product family	
J				angles	100 ~ ± 0.8		0° ± 3°				
				dr	A. JUANG	12/6/'00		SMART PLUS B + BRACKET ASSEMBLY		code	
				engr	MINERVA WANG	12/6/'00					
				chr	JOSEPH HSIA	12/6/'00		A3		55640	
				appd	JENN TSAO	12/6/'00					
sheet index	revision sheet					scale	1.5 : 1	size dwg no		sheet 3 of	

ALL rights strictly reserved. Reproduction or issue to third parties in any form whatever is not permitted without written authority from the proprietor.  
Property of © FCI ELECTRONICS Copyright FCI ELECTRONICS INC.

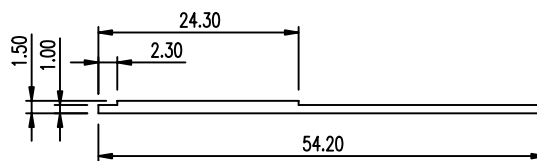
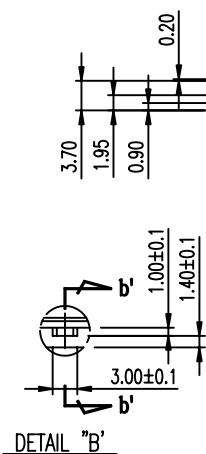
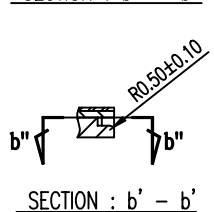
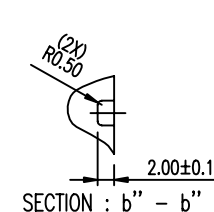




PRODUCT NO.  
55640-20201(LF)  
55640-20211(LF)



SMART CARD	FPC	FUNC.
C4	P1	RFU
C3	P2	Clock
C2	P3	Reset
C1	P4	Vcc
SENSOR 1	P5	SENSOR
	P6	Reserved
SENSOR 2	P7	SENSOR
C5	P8	Gnd
C6	P9	Vpp
C7	P10	I/O
C8	P11	RFU
	P12	Reserved



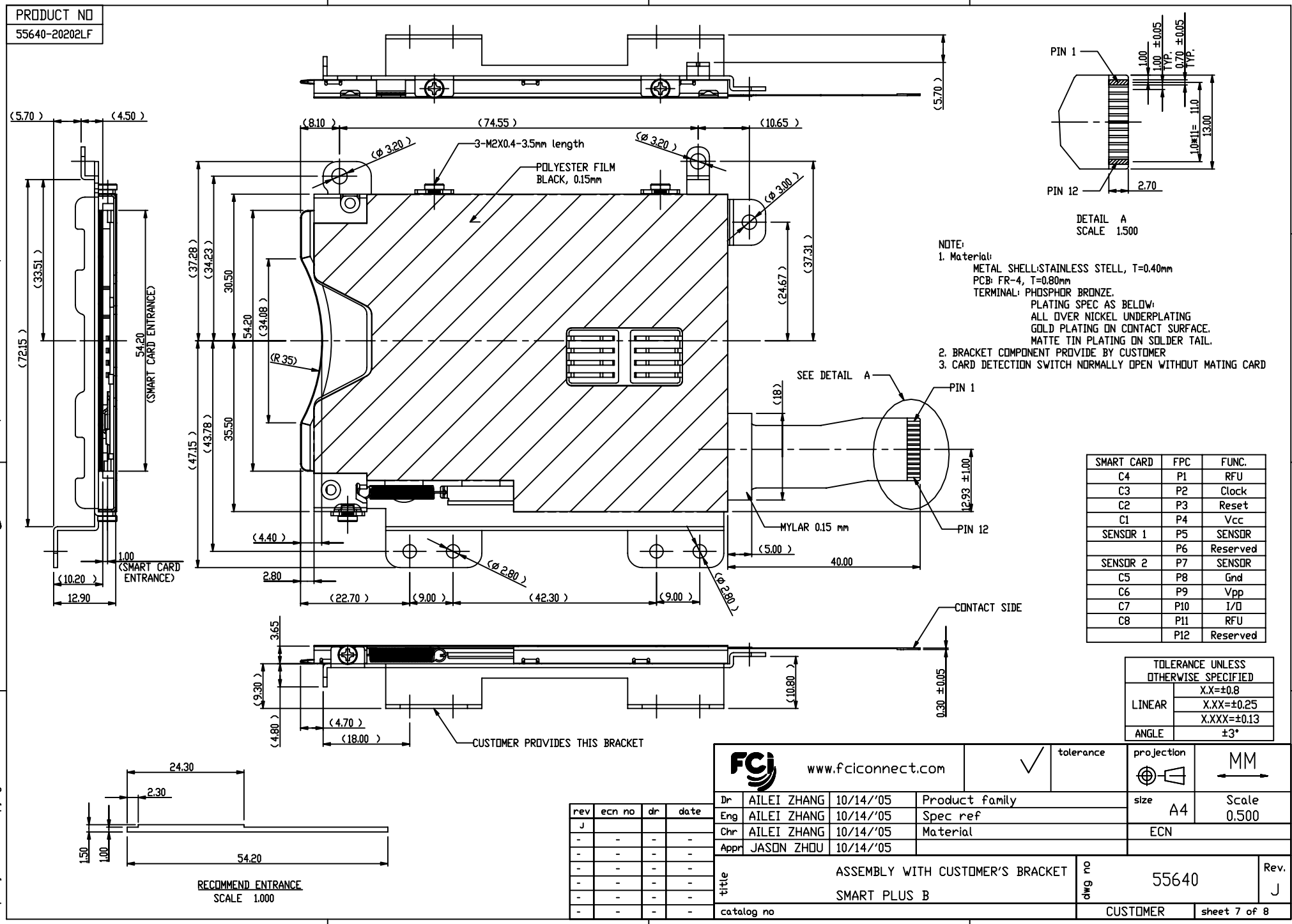
KEEP OUT ZONE  
MYLAR

mat'l. code				tolerances unless otherwise specified		CUSTOMER COPY		www.fciconnect.com	
ltr	ecn no	dr	date	linear	~ 10 ± 0.3	projection	title	product family	code
J					10 ~ 100 ± 0.5	1	SMART PLUS B ASSEMBLY	size	—
				angles	100 ~ ± 0.8	mm		dwg no	sheet
				dr	0° ± 3°	scale			6 of
				enr	A. JUANG 9/17/'02	1.5 : 1			
				chr	A. JUANG 9/17/'02				
				app	SCOTT LU 9/17/'02				
					JENN TSAO 9/17/'02				
sheet index	revision sheet								



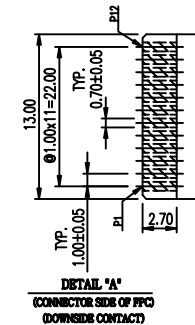
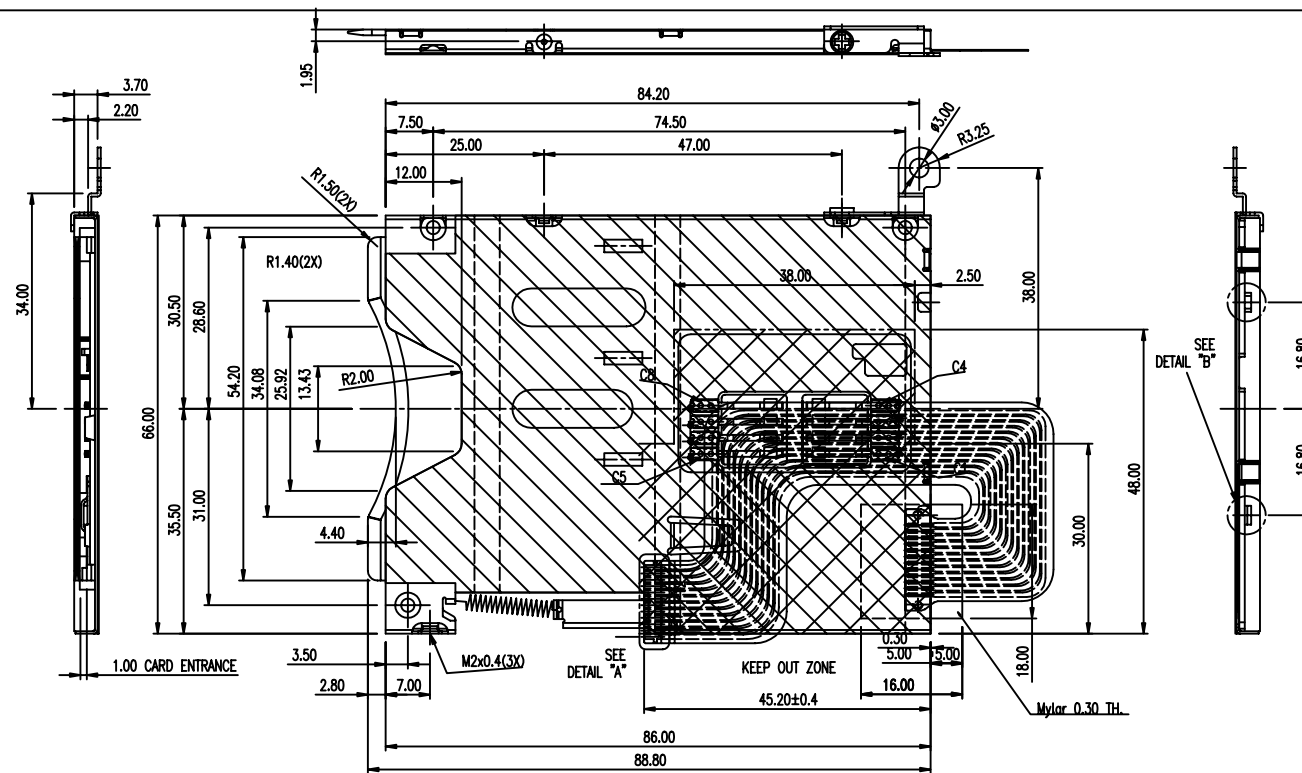
Tous droits strictement reserves. Reproduction ou communication a des tiers interdite sous quelque forme que ce soit sans autorisation ecrite du proprietaire. Propriete de c FCI. Droits de reproduction FCI.

All rights strictly reserved. Reproduction or issue to third parties in any form whatever is not permitted without written authority from the proprietor. Property of FCI. Copyright FCI.






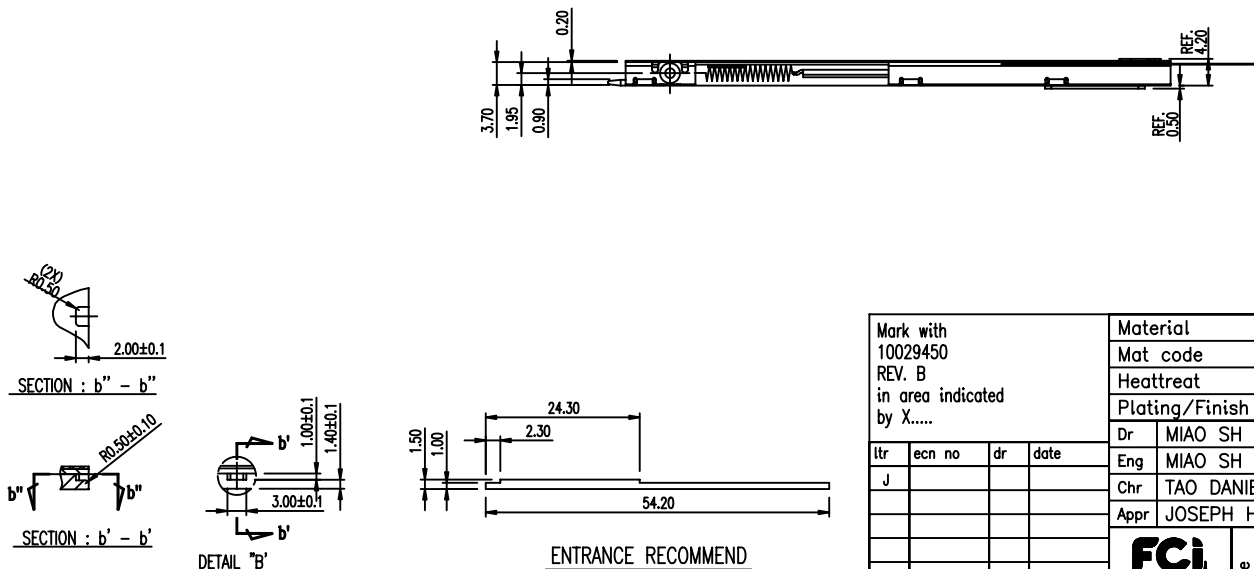
PRODUCT NO.
55640-23401(LF)






SMART CARD	FPC	FUNC.
C4	P1	RFU
C3	P2	Clock
C2	P3	Reset
C1	P4	Vcc
SENSOR 1	P5	SENSOR
	P6	Reserved
SENSOR 2	P7	SENSOR
C5	P8	Gnd
C6	P9	Vpp
C7	P10	I/O
C8	P11	RFU
	P12	Reserved

 KEEP OUT ZONE

 MYLAR



Mark with 10029450 REV. B in area indicated by X.....	Material				SEE NOTES		Spec ref		*	
	Mat code						CUSTOMER		tolerance	projection
	Heatreat						✓			mm
	Plating/Finish									
	Dr		MIAO SH		2007-07-24				size	Scale
ltr	ecn no	dr	date	Eng		MIAO SH		2007-07-24		Product family
J				Chr		TAO DANIEL		2007-07-24		Model Name
				Appr		JOSEPH HSIA		2007-07-24		Model Revision
								D		REL Level
										RELEASED
						title		SMART PLUS B ASSEMBLY		dwg no
								HOUSING		55640
										Rev.
										J
				Pro/E file		catalog no		*		sheet 8 of 8