

5 3 6 1 0 - X X X - X

S=15μ"[0.38μm]GOLD  
ON CONTACT AREA (NOTE 12)  
150μ"[3.81μm]TIN/LEAD ON TAIL  
ON TAIL

G=30μ"[0.76μm]GOLD  
ON CONTACT AREA (NOTE 12)  
150μ"[3.81μm]TIN/LEAD ON TAIL

S=15 $\mu$ [0.38 $\mu$ m]GOLD  
ON CONTACT AREA (NOTE 12)  
100 $\mu$ [2.54 $\mu$ m]PURE TIN ON TAIL  
ON TAIL

G=30μ"[0.76μm]GOLD  
ON CONTACT AREA (NOTE 12)  
100μ"[2.54μm]PURE TIN ON TAIL

X X X LF

LEAD FREE OPTION  
NOTE 9.10

RETENTION  
R= RETENTION LEG  
NOTE 5

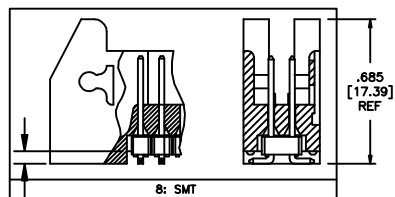
POLARIZATION  
NOTE 8

### TAIL LENGTH

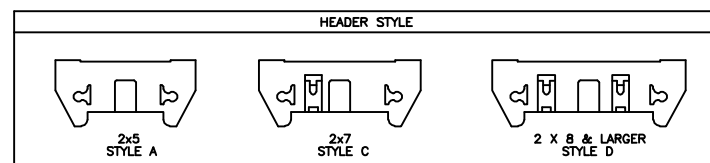
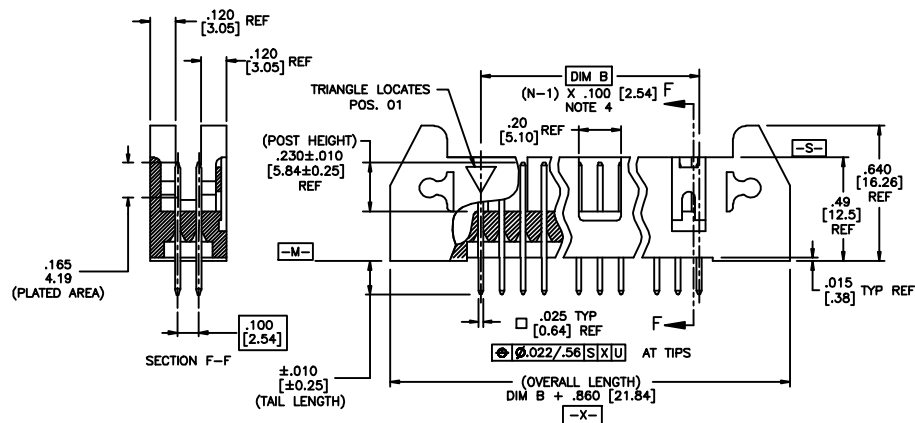
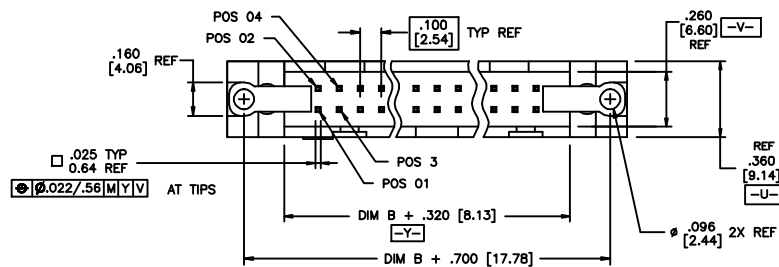
$$1 = .085 / 2.16$$
$$2 = .112 / 2.84$$
$$F = 150 / 3.81$$
$$7 = 675 / 17.15$$



8=SMT

| DASH NO. | POSITIONS | HEADER STYLE |
|----------|-----------|--------------|
| 10       | 2 X 5     | A            |
| 14       | 2 X 7     | C            |
| 16       | 2 X 8     | D            |
| 20       | 2 X 10    | D            |
| 26       | 2 X 13    | D            |
| 34       | 2 X 17    | D            |
| 40       | 2 X 20    | D            |
| 50       | 2 X 25    | D            |



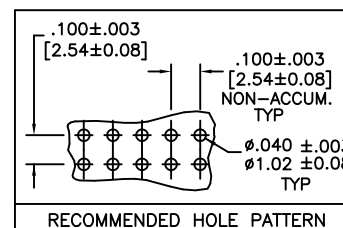
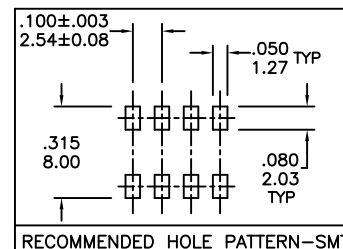
.060  
[1.52]  
REF



|             |          |                |         |                                       |  |  |  |   |  |   |  |  |  |
|-------------|----------|----------------|---------|---------------------------------------|--|--|--|---|--|---|--|--|--|
| mat'l code  |          |                |         | surface<br>ISO 1902 ✓                 |  | tolerance<br>ISO 406<br>ISO 1101   |  | projection<br> |  | product family<br>QUICKIE                                     |  |  |  |
| ltr         | ecn no   | dr             | date    | tolerances unless otherwise specified |  | angles<br>linear<br><div> <div> <math>\frac{.00101}{.00103}</math><br/> <math>\frac{.0004.006}{.0004.03}</math><br/> <math>\frac{.0003.006}{.0003.051}</math> </div> <div> <math>\frac{.00101}{.00103}</math><br/> <math>\frac{.0004.006}{.0004.03}</math><br/> <math>\frac{.0003.006}{.0003.051}</math> </div> </div> |  | INCH/MM<br>    |  | title<br>.100/2.54cc EJECT LATCH<br>SHOROUDED VERTICAL HEADER |  |  |  |
| B           | V01356   | MEM            | 6/05/00 |                                       |  |  |  | scale 1:1   |  | dwg no  |  |  |  |
| C           | V02309   | MEM            | 9/11/00 |                                       |  |  |  |   |  | sheet 1 of 2  |  |  |  |
| D           | C10004   | MDF            | 2/26/01 | 0'±2"                                 |  |  |  |   |  | size  |  |  |  |
| E           | M05-0089 | ERE            | 5/20/05 | dr                                    |  | G. HULL  |  | 6/26/99   |  | 53610   |  |  |  |
| F           | M06-0289 | AGS            | 7/29/06 | engr                                  |  | L. GREEN   |  | 7/12/99   |  | A   |  |  |  |
| G           | M08-0237 | MHT            | 8/25/08 | chr                                   |  | L. GREEN   |  | 7/12/99   |  |   |  |  |  |
| H           | M08-0273 | MHT            | 9/25/08 | appd                                  |  | L. GREEN   |  | 7/21/99   |  |   |  |  |  |
| sheet index |          | revision sheet |         | H                                     |  | H  |  |   |  |   |  |  |  |
|             |          |                |         | 1                                     |  | 2  |  |   |  |   |  |  |  |

NOTES:

- ①. HOUSING MAT'L: HIGH TEMPERATURE THERMOPLASTIC. UL94V-0.  
COLOR : BLACK
- ②. PIN MATERIAL: PHOSPHOR-BRONZE
- ③. 3 LBS/1.36 KG MIN. RETENTION.
- ④. TO DETERMINE DIMENSION:  
N = NUMBER OF POSITIONS.  
EXAMPLE: 10 POS., (N-1) x .100[2.54]=.900[22.87]
- ⑤. RETENTIVE LEG:  
RETENTIVE LEG APPLICABLE TO TAIL LENGTH .120/3.05 ONLY.  
RETENTION IS APPLIED TO FOUR PINS ON PART SIZES OF 2x14 AND SMALLER,  
AND APPLIED TO EIGHT PINS ON PARTS SIZES OF 2x15 AND LARGER.  
5LB/2.3KG MAX INSERTION FORCE AND .25LB./1KG MIN RETENTION FORCE  
PER RETENTIVE PIN USING .062/1.57 THICK CIRCUIT BOARD AND RECOMMENDED  
HOLE PATTERN. RETENTIVE LOCATION AT THE DISCRETION OF THE MANUFACTURER.  
OMIT FROM PRODUCT NUMBER IF THIS FEATURE IS NOT APPLICABLE.
6. PACKAGED IN TRAYS.
7. UNDERPLATING: 50μ"/1.27μm Ni.
8. FOR POLARIZATION, SPECIFY POSITION NUMBER (i.e.. 03= PIN 3) TO OMIT PIN.  
OMIT FROM PRODUCT NUMBER IF THIS FEATURE IS NOT APPLICABLE.
- ⑨. ADD "LF" SUFFIX AT THE END OF PART NUMBER FOR LEAD FREE OPTION.
- ⑩. THIS PRODUCT MEETS EUROPEAN UNION DIRECTIVES AND OTHER  
COUNTRY REGULATION AS DESCRIBED IN GS-22-008.
11. THE HOUSING WILL WITHSTAND EXPOSURE TO 260°C PEAK TEMPERATURE  
FOR 15 SECONDS IN A WAVE SOLDER APPLICATION WITH A 1.5mm  
MINIMUM THICK CIRCUIT BOARD. SEE APPLICATION NOTES/PROCEDURES  
IF THEY ARE AVAILABLE.  
THE HOUSING WILL WITHSTAND EXPOSURE TO 260°C PEAK TEMPERATURE  
FOR 20 SECONDS IN A CONVECTION, INFRA-RED OR VAPOR PHASE REFLOW  
OVEN. SEE APPLICATION NOTES/PROCEDURES IF THEY ARE AVAILABLE.
- ⑫. PLATING OPTIONS:  
MAY BE EITHER GOLD OR GXT PLATED AT MANUFACTURER'S OPTION.



|             |                |    |      |                                       |   |                       |                               |
|-------------|----------------|----|------|---------------------------------------|---|-----------------------|-------------------------------|
| mat'l. code |                |    |      | surface<br>ISO 1902                   | tolerance<br>ISO 406<br>ISO 1101                              | projection<br>INCH/MM | product family<br>QUICKIE     |
| lfr         | ecn no         | dr | date | tolerances unless otherwise specified |   | scale 1:1             | title                         |
| H           |                |    |      | angles                                | linear  |                       | .100/2.54cc EJECT LATCH       |
|             |                |    |      | 0°±2°                                 | XXX±.005/XXX±0.13<br>XXX±.005/XXX±0.13<br>XXX±.0020/XXX±0.051 |                       | SHOROUDED VERTICAL HEADER     |
|             |                |    |      | dr                                    | G. HULL 6/26/99   | FCJ                   | dwg no                        |
|             |                |    |      | engr                                  | L. GREEN 7/12/99  |                       | sheet 2 of 2 size             |
|             |                |    |      | chr                                   | L. GREEN 7/12/99  |                       | 53610 A3                      |
|             |                |    |      | appd                                  | L. GREEN 7/21/99  |                       | type Product Customer Drawing |
| sheet index | revision sheet |    |      |                                       |   |                       |                               |