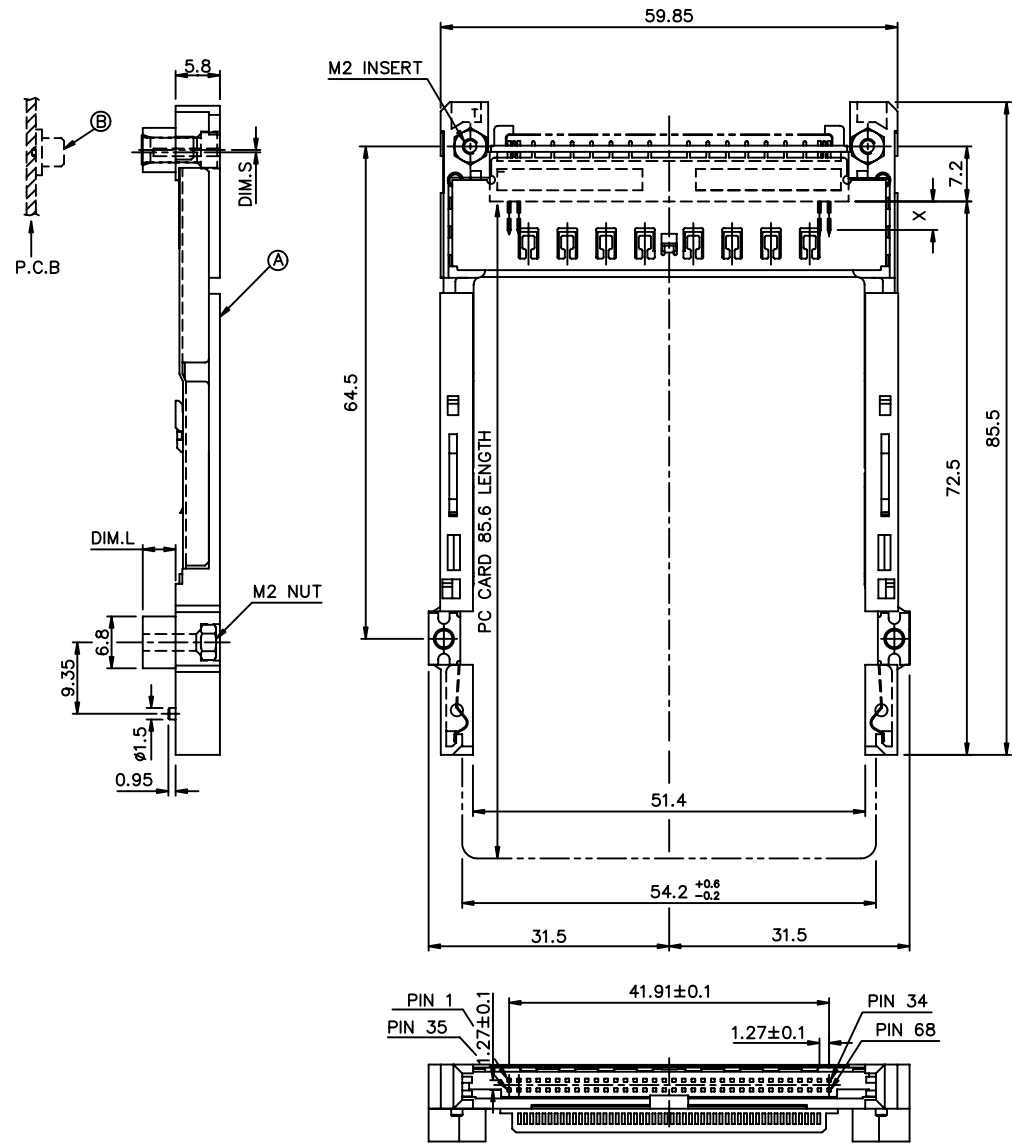


FCI CONFIDENTIAL



This document is the property of and embodies CONFIDENTIAL and PROPRIETARY information of FCI. No part of the information shown on this document may be used in any way or disclosed to others without the written consent of FCI. Copyright FCI

PRODUCT NO.	DIM.L	DIM.S
52599-022/022LF	2.2	1.0
52599-043/043LF	4.3	-0.3
52599-050/050LF	5.0	-0.3



P/N: 52599-***/**LF
ABOVE P.C.B

NOTES:

- MATERIAL:
1.1 EJECT HEADER ASS'Y
PLASTIC HOUSING: LCP UL94V-0 BLACK
PIN: COPPER ALLOY
PCB: FR4
PLASTIC GUIDE: POLYPHTHARAMID UL94V-0 BLACK
1.2 RECEPTACLE
PLASTIC: LCP 94V-0 NATURAL
PIN: BeCu
- FINISH
PIN :
UNDER PLATING: 1.27 um MIN. Ni
CONTACT AREA: 0.13 um MIN. GOLD OVER
0.5 um MIN. Pd-Ni
SOLDER TAIL: 2.5 um MIN. Sn-Pb
: 2.5 um MIN. PURE Sn (FOR -***LF)
GROUND SHIELD :
UNDER PLATING: 1.27 um MIN. Ni
CONTACT SURFACE: 0.2 um GOLD (ONE SIDE ONLY)
- P.C.B. ARE AS APPEARS INSTALLED
- DIM "X"

4.25±0.1	3.5±0.1	5.0±0.1
OTHERS	36,67	1,17,34,35,51,68
- DO NOT TOUCH AND KEEP CLEAN THE SURFACES OF PCB OF HEADER ASS'Y.
- IF LEAD FREE P/N. THE HOUSING WILL WITHSTAND EXPOSURE TO 260°C PEAK TEMPERATURE FOR 10 SECONDS IN A WAVE SOLDER APPLICATION WITH A 1.00MM MINIMUM THICK CIRCUIT BOARD.
- LEAD FREE PRODUCT MEETS EUROPEAN UNION DIRECTIVES AND OTHER COUNTRY REGULATIONS AS DESCRIBED IN GS-22-008
- IF LEAD FREE P/N. PACKAGING MEETS GS-14-920 SPECIFICATION

ORDERING INFORMATION

NAME	PART NO.	Q'TY
(A) EJECT HEADER ASS'Y	52599-***/**LF	1
(B) MATING RECEPTACLE	73277-101000/101402LF	1



mat'l. code				surface	tolerance	projection	product family			
				ISO 1302	ISO 406 ISO 1101		CARDBUS			
ltr	ecn no	dr	date	tolerances unless otherwise specified			title			
A	T00092	WL	04/06/00	angles	linear	± 0.30	CARDBUS NONE PUSH ROD, TYPE 1/2/3			
B	T00270	WL	09/04/00							
C	N05-0135	WB	05/27/05							
D	N05-0316	MZ	11/18/05	dr	Mike Zhou	08/18/06	dwg no 52599 sheet 1 of 5 size A4			
E	N06-0081	MZ	03/28/06	enr	Mike Zhou	08/18/06				
F	N06-0220	MZ	08/18/06	chr	Mike Zhou	08/18/06				
G	N08-0028	MZ	11/21/06	appd	Qin David	08/18/06	type CUSTOMER Drawing			
sheet	revision	G	G	G	G	G				
index	sheet	1	2	3	4	5				

PDM: Rev:G

STATUS: Released

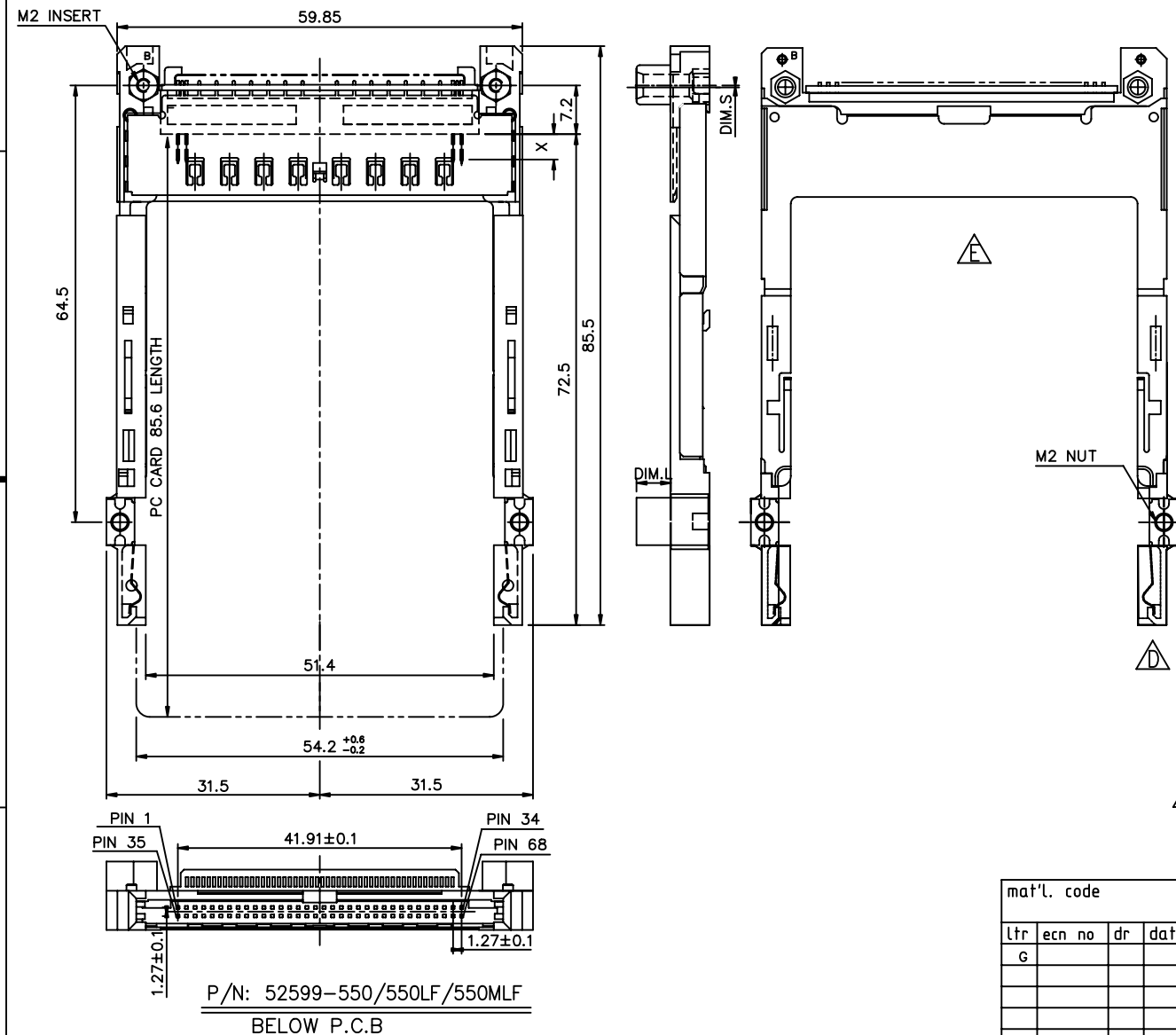
Printed: Feb 26, 2008

FCI CONFIDENTIAL



This document is the property of and embodies CONFIDENTIAL and PROPRIETARY information of FCI. No part of the information shown on this document may be used in any way or disclosed to others without the written consent of FCI.
Copyright FCI

PRODUCT NO.	DIM.L	DIM.S
52599-550	5.0	-0.3
52599-550LF	5.0	-0.3
52599-550MLF	5.0	-0.3



- NOTES:
- MATERIAL:
 - EJECT HEADER ASS'Y
PLASTIC HOUSING: LCP UL94V-0 BLACK
PIN: COPPER ALLOY
PCB: FR4
PLASTIC GUIDE: NYLON UL94V-0 BLACK
 - RECEPTACLE
PLASTIC: LCP 94V-0 NATURAL
PIN: BeCu
 - FINISH
PIN :
UNDER PLATING: 1.27 um MIN. Ni
CONTACT AREA 1: 0.13 um MIN. GOLD OVER
0.5 um MIN. Pd-Ni
CONTACT AREA 2 : 0.25um MIN.GOLD (FOR****-MLF)
SOLDER TAIL:1) 2.5 um MIN. Sn-Pb
:2) 2.5 um MIN. PURE Sn (FOR -***LF&-***MLF)
GROUND SHIELD :
UNDER PLATING: 1.27 um MIN. Ni
CONTACT SURFACE: 0.2 um GOLD (ONE SIDE ONLY)
 - P.C.B. ARE AS APPEARS INSTALLED
 - DIM "X"

4.25±0.1	3.5±0.1	5.0±0.1
OTHERS	36,67	1,17,34,35,51,68
 - DO NOT TOUCH AND KEEP CLEAN THE SURFACES OF PCB OF HEADER ASS'Y.
 - IF LEAD FREE P/N. THE HOUSING WILL WITHSTAND EXPOSURE TO 260°C PEAK TEMPERATURE FOR 10 SECONDS IN A WAVE SOLDER APPLICATION WITH A 1.00MM MINIMUM THICK CIRCUIT BOARD.
 - LEAD FREE PRODUCT MEETS EUROPEAN UNION DIRECTIVES AND OTHER COUNTRY REGULATIONS AS DESCRIBED IN GS-22-008
 - IF LEAD FREE P/N. PACKAGING MEETS GS-14-920 SPECIFICATION

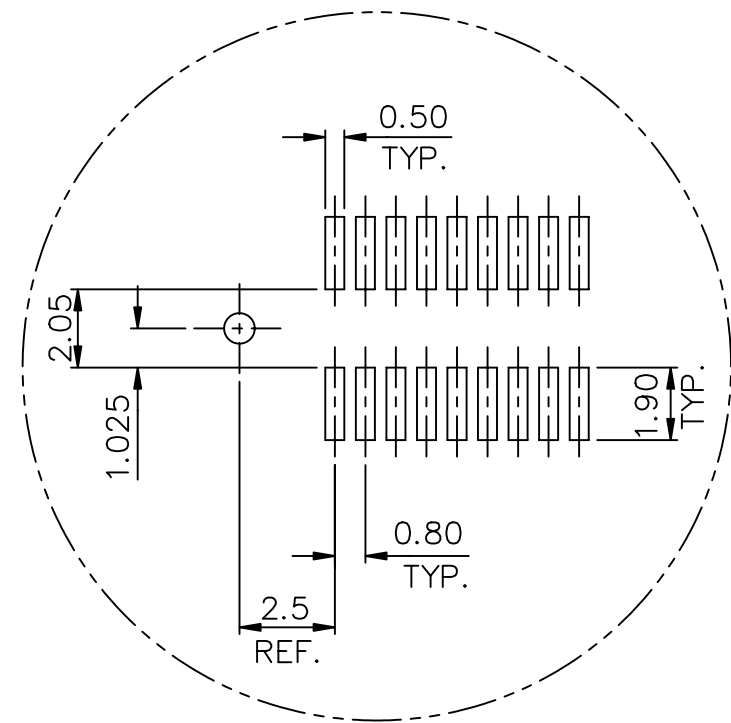
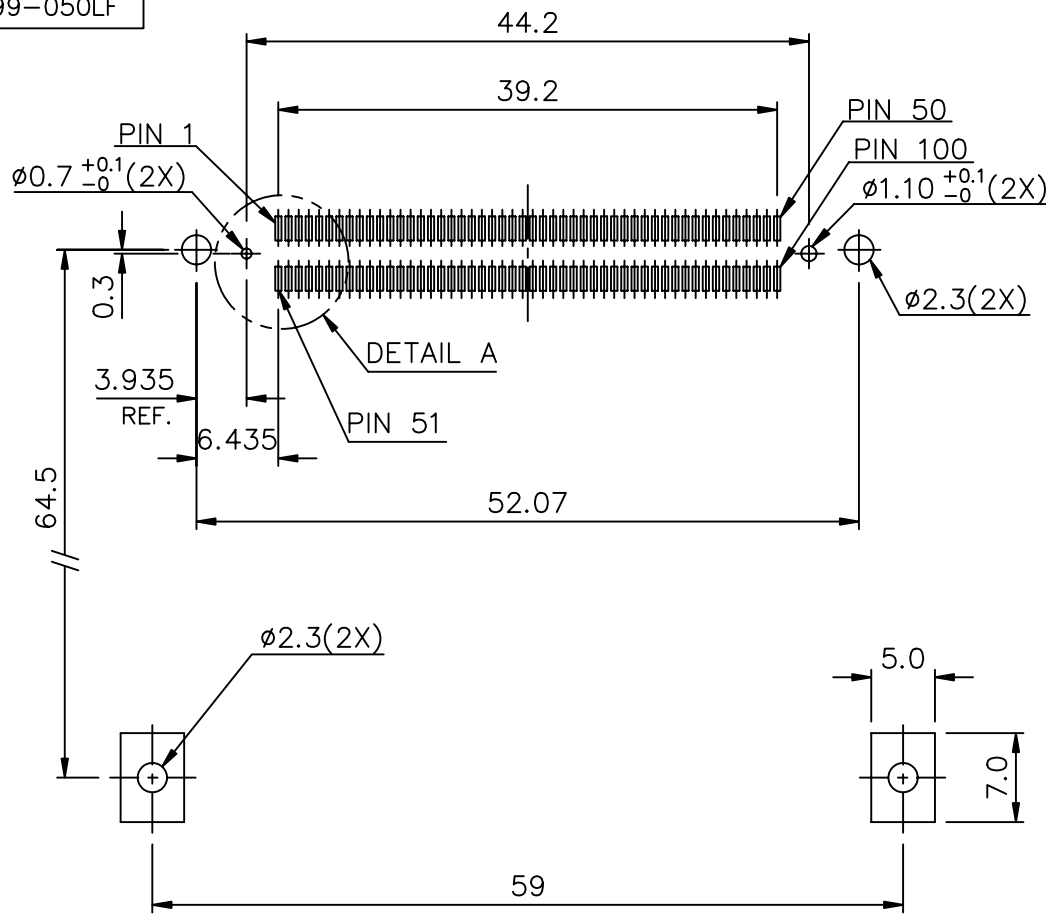
ORDERING INFORMATION		
NAME	PART NO.	Q'TY
Ⓐ EJECT HEADER ASS'Y	52599-***/**/MLF	1
Ⓑ MATING RECEPTACLE	73277-101000/101402LF	1

mat'l. code				surface	tolerance	projection	product family			
				ISO 1302	ISO 406 ISO 1101		CARDBUS			
ltr	ecn no	dr	date	tolerances unless otherwise specified			title			
G				angles	linear	± 0.30	CARDBUS NONE PUSH			
				±2°			ROD, TYPE 1/2/3			
				dr	Mike Zhou	08/18/06	dwg no			
				enr	Mike Zhou	08/18/06	sheet 2 of 5 size			
				chr	Mike Zhou	08/18/06	52599			
				appd	Qin David	08/18/06	type CUSTOMER Drawing			
sheet	revision									
index	sheet									

FCI CONFIDENTIAL

This document is the property of and embodies CONFIDENTIAL and PROPRIETARY information of FCI. No part of the information shown on this document may be used in any way or disclosed to others without the written consent of FCI.
Copyright FCI

PRODUCT NO.
52599-043
52599-050
52599-043LF
52599-050LF



DETAIL A

4 CARD INSERTION DIRECTION

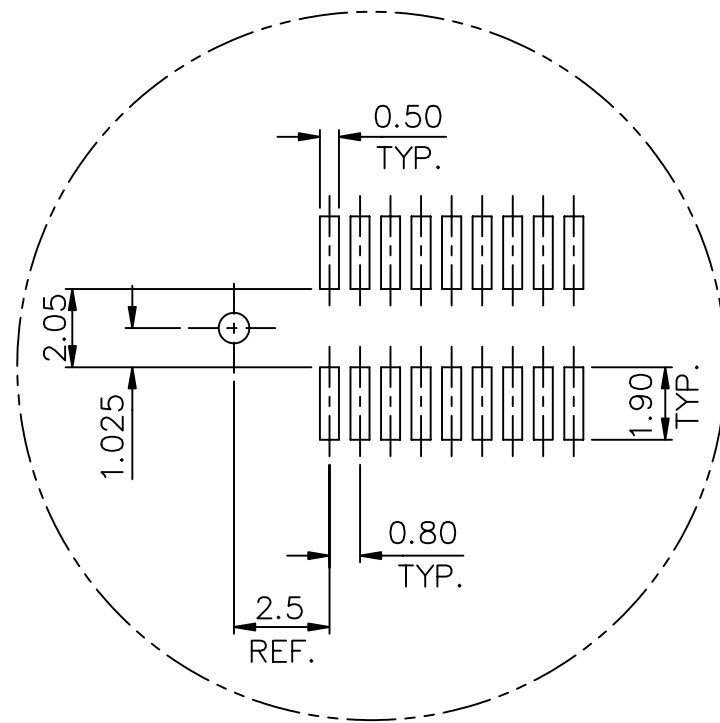
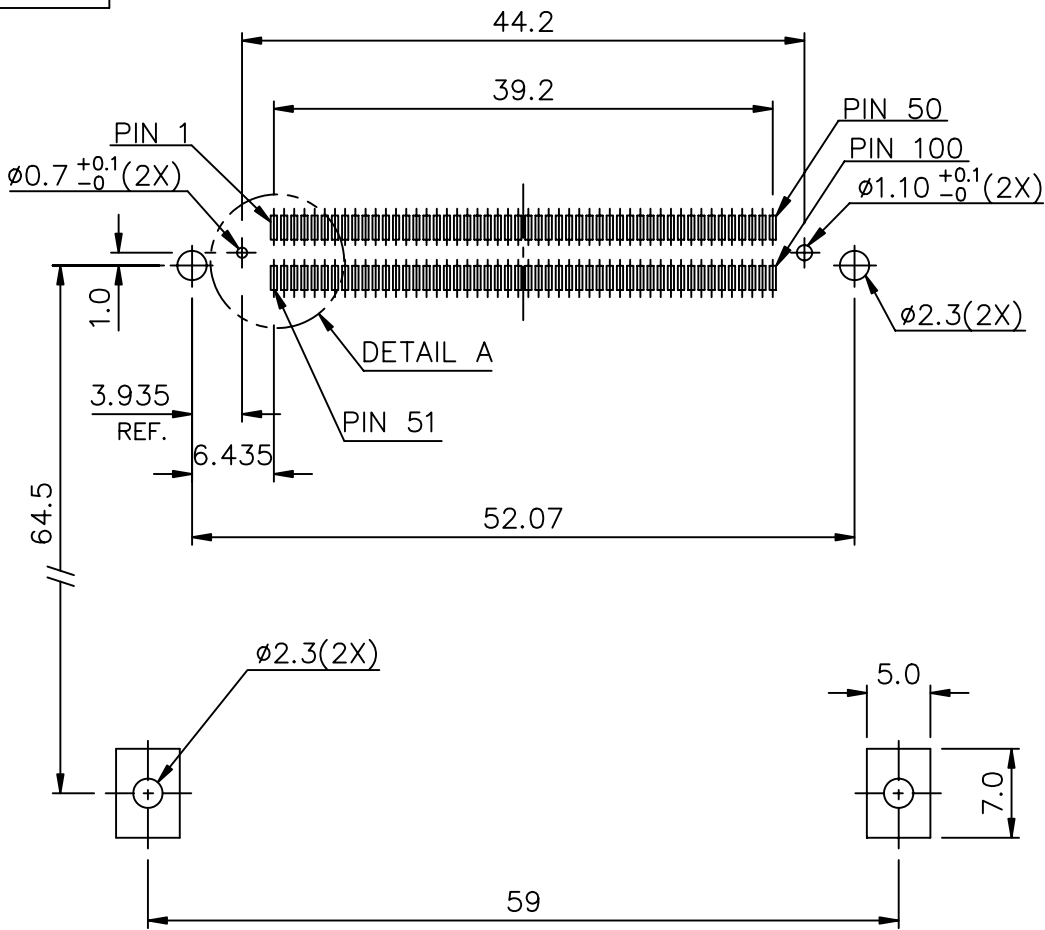
mat'l. code				surface ISO 1302	tolerance ISO 406 ISO 1101	projection	product family CARDBUS
ltr	ecn no	dr	date	tolerances unless otherwise specified			title
G				angles	linear	± 0.10	CARDBUS NONE PUSH ROD, TYPE 1/2/3
				$\pm 2^\circ$		MM	
				dr	Mike Zhou	08/18/06	dwg no
				enr	Mike Zhou	08/18/06	sheet 3 of 5 size
				chr	Mike Zhou	08/18/06	52599 A4
				appd	Qin David	08/18/06	type CUSTOMER Drawing
sheet index	revision sheet						

FCI CONFIDENTIAL



This document is the property of and embodies CONFIDENTIAL and PROPRIETARY information of FCI. No part of the information shown on this document may be used in any way or disclosed to others without the written consent of FCI. Copyright FCI

PRODUCT NO.
52599-022
52599-022LF



DETAIL A

4 CARD INSERTION DIRECTION

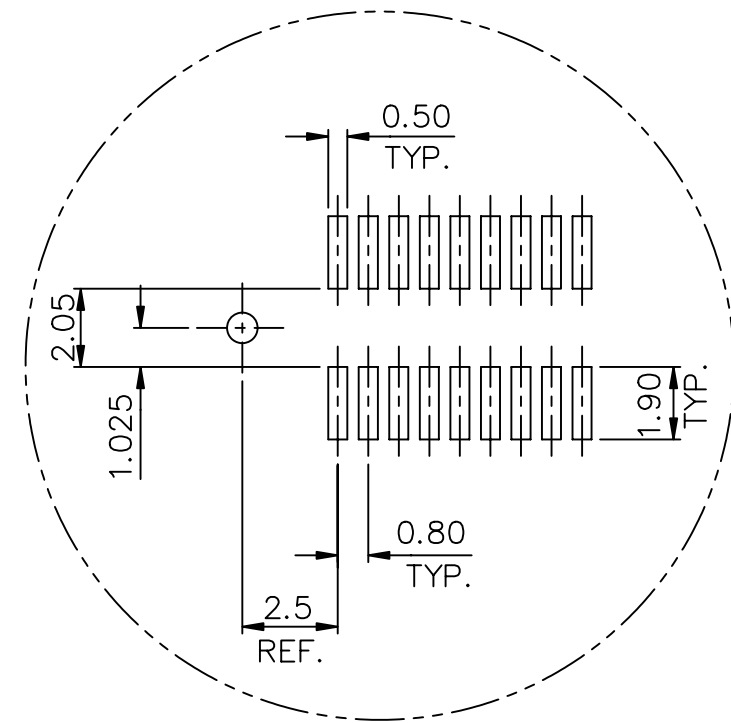
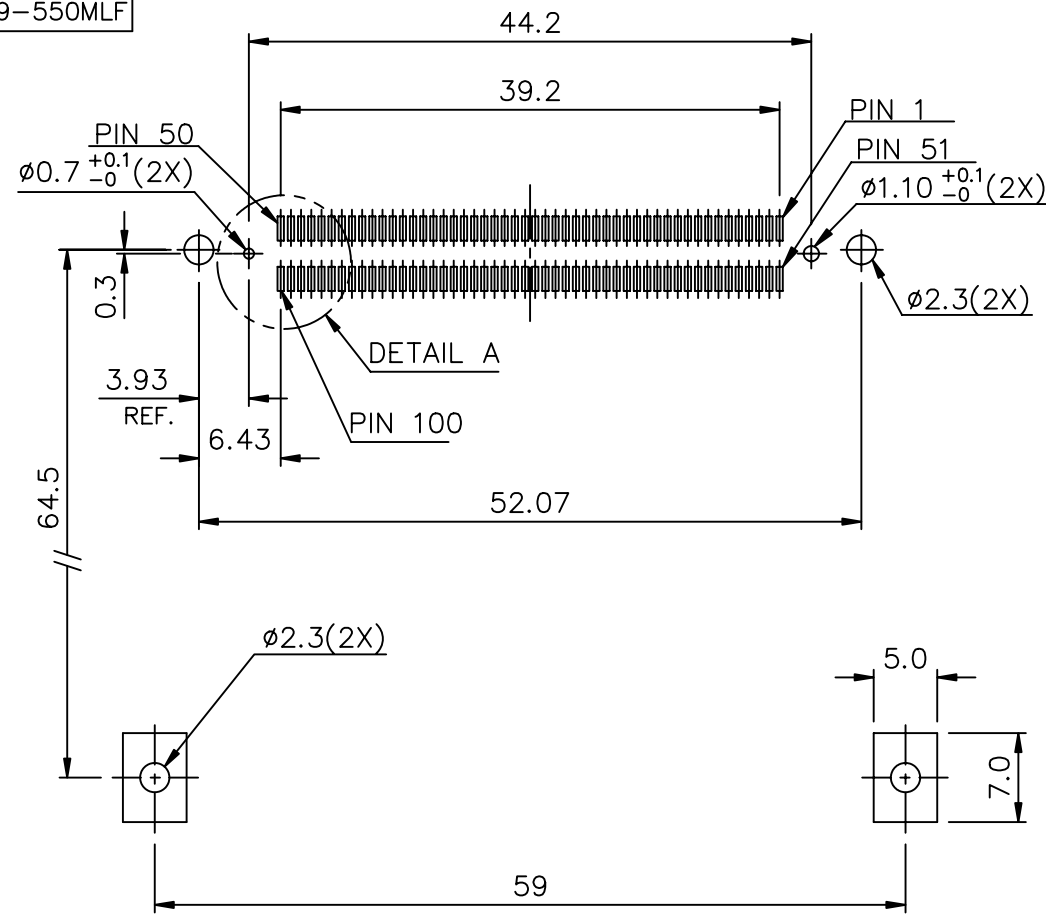
mat'l. code				surface ISO 1302	tolerance ISO 406 ISO 1101	projection 	product family CARDBUS			
ltr	ecm no	dr	date	tolerances unless otherwise specified			title CARDBUS NONE PUSH ROD, TYPE 1/2/3			
G				angles	linear	± 0.10	MM			
				$\pm 2^\circ$			scale 1:5:1			
				dr	Mike Zhou	08/18/06	dwg no			
				enr	Mike Zhou	08/18/06	sheet 4 of 5			
				chr	Mike Zhou	08/18/06	52599			
				appd	Qin David	08/18/06	A4			
sheet index		revision sheet					type CUSTOMER Drawing			

FCI CONFIDENTIAL



This document is the property of and embodies CONFIDENTIAL and PROPRIETARY information of FCI. No part of the information shown on this document may be used in any way or disclosed to others without the written consent of FCI.
Copyright FCI

PRODUCT NO.
52599-550
52599-550LF
52599-550MLF



DETAIL A

4 CARD INSERTION DIRECTION

mat'l. code				surface	tolerance	projection	product family			
				ISO 1302	ISO 406 ISO 1101		CARDBUS			
ltr	ecm no	dr	date	tolerances unless otherwise specified			title			
G				angles	linear	± 0.10	CARDBUS NONE PUSH			
				$\pm 2^\circ$			ROD, TYPE 1/2/3			
				dr	Mike Zhou	08/18/06	dwg no		sheet 5 of 5	size
				enr	Mike Zhou	08/18/06	52599		A4	
				chr	Mike Zhou	08/18/06	type		CUSTOMER	Drawing
				appd	Qin David	08/18/06				
sheet index	revision sheet									