

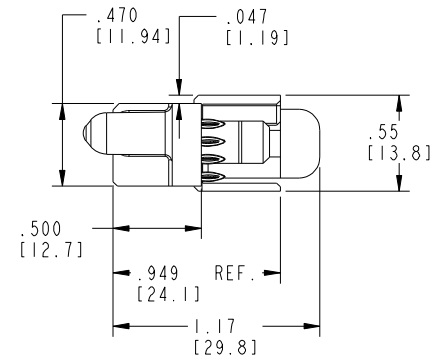
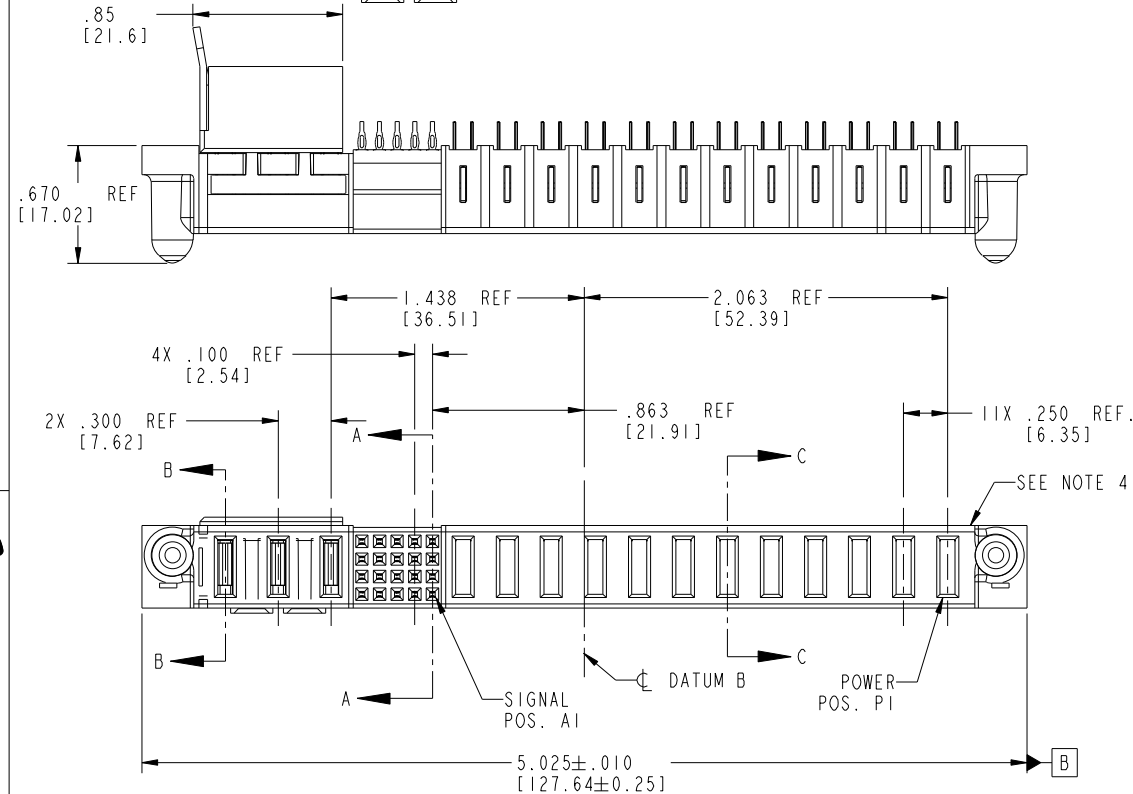


Tous droits strictement réservés. Reproduction ou communication à des tiers interdite sous quelque forme que ce soit sans autorisation écrite du propriétaire. Propriété de c FCI. Droits de reproduction FCI.



All rights strictly reserved. Reproduction or issue to third parties in any form whatever is not permitted without written authority from the proprietor. Property of FCI. Copyright FCI.

PRODUCT NO.	ROWS	POWER				SIGNAL					POWER											E1	
		E2	P15	P14	P13	5	4	3	2	1	P12	P11	P10	P9	P8	P7	P6	P5	P4	P3	P2		P1
51897-007- NOTE: ③	D C B A		PH	PH	PG	PF	PF	PF	PF	PF	PF	PF	PF	PF	PF	PF	PF	PF	PF	PF	PF	PF	



CODE	DIM "M" MATING LENGTH	CONTACT TYPE
F	N/A [N/A]	SIGNAL
PF	.092 [2.34]	POWER
PG	.042 [1.07]	POWER
PH	.092 [2.34]	POWER

mat'l code				SEE NOTE 2		tolerances unless otherwise specified		CUSTOMER		FCI		www.fciconnect.com	
litr	ecn no.	dr	date			linear	.XX±.01/0.X±0.3	COPY		projection		title	
A	V03-1207	TAB	11/11/03				.XXX±.005/0.XX±0.13					12P + 20S + 3ACP	
B	DG05-0200	SJ	07/04/05			angles	.XXX±.0020/0.XXX±0.051					VERT PRESS FIT RECEPT CABLE PORT	
C	DG05-0210	SJ	07/05/05				0°±2°					product family	PwrBlade
D	DG06-0381	HEAVEN	09/12/06			dr	M. MOSTOLLER 8/1/03					size	dwg no
						engr	M. MOSTOLLER 8/1/03					213	
						chr	H. BREWBAKER 8/1/03					51897-007	sheet
						appd	M. MOSTOLLER 8/1/03					1 of 5	
sheet index		revision sheet		D	D	D	D	D	D	scale		1:1	
1		2		3	4	5				cage code		22526	

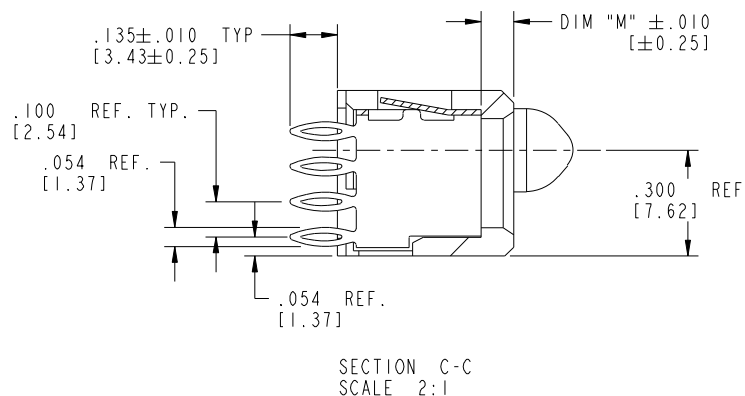
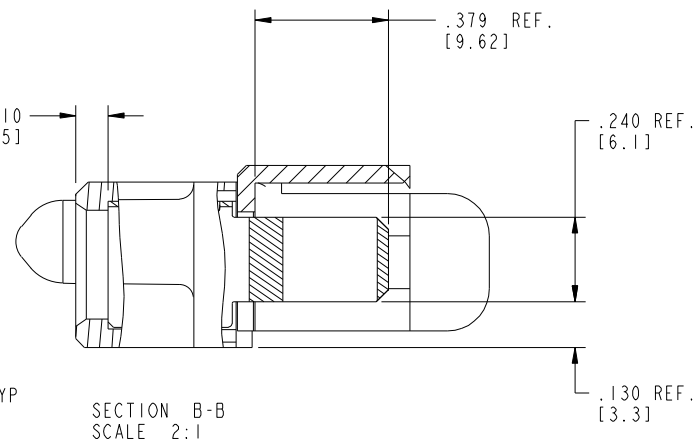
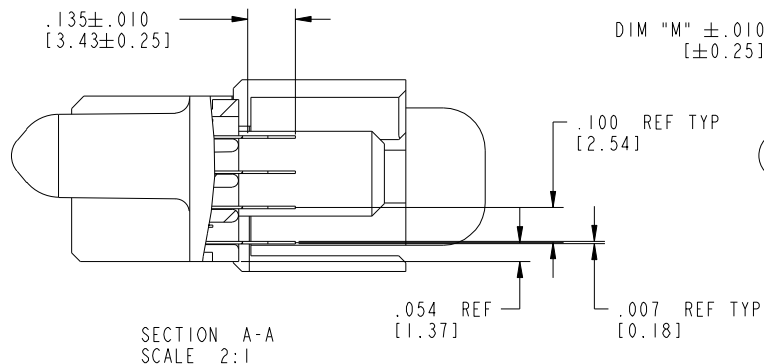
Pro/E


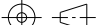
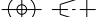

Tous droits strictement reserves. Reproduction ou communication a des tiers interdite sous quelque forme que ce soit sans autorisation écrite du propriétaire. Propriete de c FCI. Droits de reproduction FCI.



All rights strictly reserved. Reproduction or issue to third parties in any form whatever is not permitted without written authority from the proprietor. Property of FCI. Copyright FCI.

PRODUCT NUMBER
51897-007--
NOTE: ③



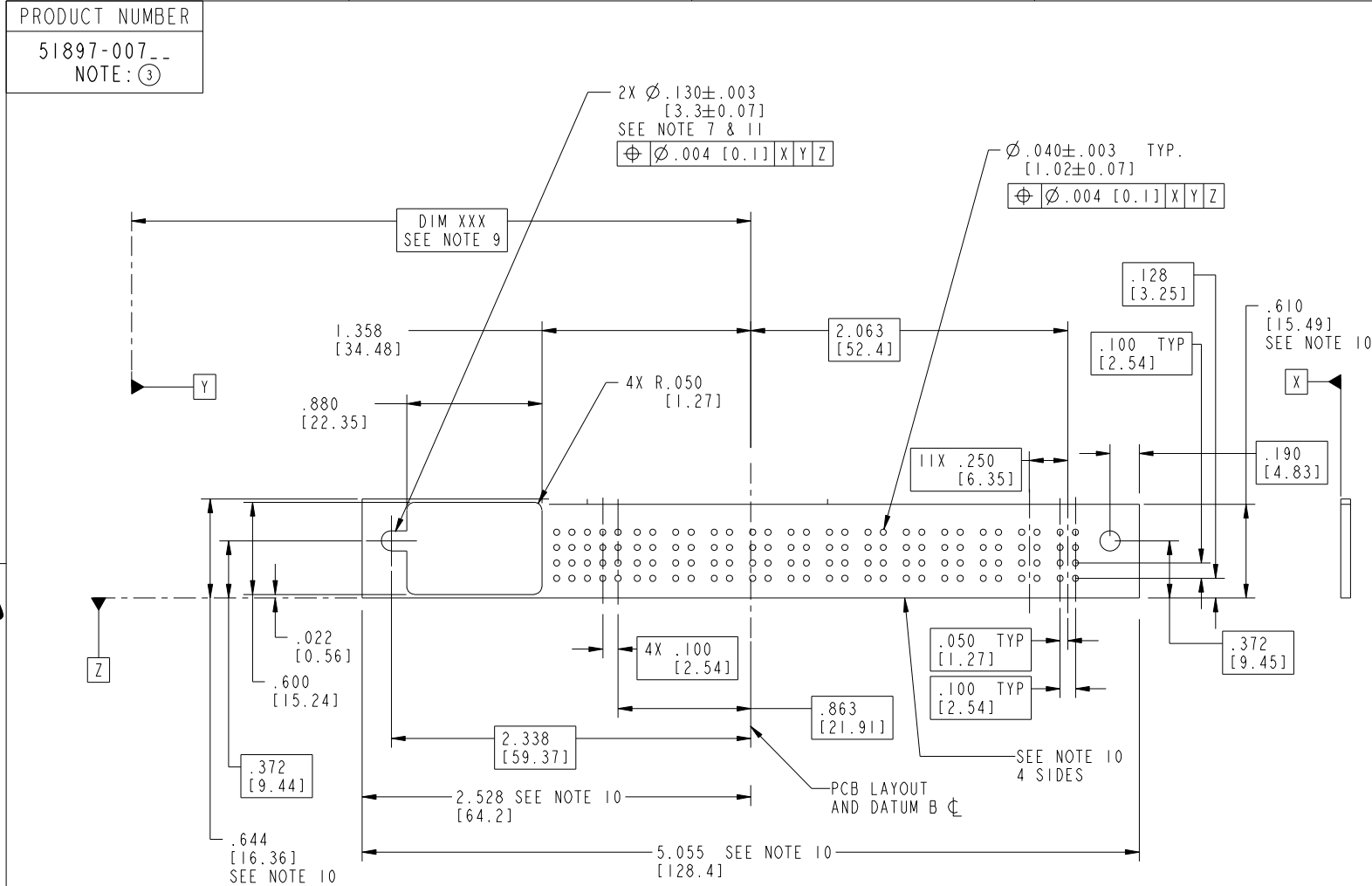
mat'l code				SEE NOTE 2				tolerances unless otherwise specified				CUSTOMER								www.fciconnect.com			
ltr		ecn no.		dr		date		linear		.XX±.01/0.X±0.3				COPY				title 12P + 20S + 3ACP VERT PRESS FIT RECEPT CABLE PORT					
D										.XXX±.005/0.XX±0.13				projection									
										.XXX±.0020/0.XXX±0.051													
								angles		0°±2°													
				dr		M. MOSTOLLER		8/1/03						product family				PwrBlade				code	
				enrg		M. MOSTOLLER		8/1/03						size				dwg no				213	
				chr		H. BREWBAKER		8/1/03						scale				A				51897-007	
				appd		M. MOSTOLLER		8/1/03		1:1								sheet					
																		2 of 5					
sheet index		revision sheet																					

Pro/E

Tous droits strictement réservés. Reproduction ou communication à des tiers interdite sous quelque forme que ce soit sans autorisation écrite du propriétaire.
Propriété de c FCI. Droits de reproduction FCI.



All rights strictly reserved. Reproduction or issue to third parties in any form whatever is not permitted without written authority from the proprietor.
Property of FCI. Copyright FCI.



mat'l code				SEE NOTE 2		tolerances unless otherwise specified		CUSTOMER		FCI	
litr	ecn no.	dr	date	linear	.XX \pm .01/0.X \pm 0.3		COPY		www.fciconnect.com		
D					.XXX \pm .005/0.XX \pm 0.13		projection		title		
					.XXX \pm .0020/0.XXX \pm 0.051				12P + 20S + 3ACP		
				angles	0° \pm 2°				VERT PRESS FIT RECEPT CABLE PORT		
				dr	M. MOSTOLLER	8/1/03	INCH/MM		product family		code
				enrg	M. MOSTOLLER	8/1/03	scale		PwrBlade		213
				chr	H. BREWBAKER	8/1/03	1:1		size		sheet
				appd	M. MOSTOLLER	8/1/03			dwg no		3 of 5
sheet index		revision sheet							A 51897-007		

Pro/E



All rights strictly reserved. Reproduction or issue to third parties in any form whatever is not permitted without written authority from the proprietor. Property of FCI. Copyright FCI.

Tous droits strictement reserves. Reproduction ou communication a des tiers interdite sous quelque forme que ce soit sans autorisation ecrite du proprietaire. Propriete de c FCI. Droits de reproduction FCI.

PRODUCT NUMBER
51897-007--
NOTE: ③

NOTES:

1. DIMENSIONS AND TOLERANCES ARE IN ACCORDANCE WITH ASME Y14.5M, 1994 UNLESS OTHERWISE SPECIFIED.

CONNECTOR NOTES:

2. HOUSING MATERIAL: UL 94 V-0 GLASS FILLED HIGH-TEMP THERMOPLASTIC
POWER CONTACT MATERIAL: COPPER ALLOY
SIGNAL PIN MATERIAL: COPPER ALLOY

③ PLATING SPEC:
51897-007;51897-007LF;51897-007GLF PLATING SPEC. WAS SHOWN IN THE PRINT OF 10064183

4. MANUFACTURER'S NAME, P/N, AND DATE CODE TO APPEAR ON THIS SURFACE.

5. PRODUCT SPECIFICATION GS-12-149.
APPLICATION SPECIFICATION BUS-20-067.

PCB NOTES:

6. ALL HOLE DIAMETERS ARE FINISHED HOLE SIZE.

7. MOUNTING HOLES, WHERE APPLICABLE, ARE UNPLATED.

8. $\varnothing .0453 \pm .0010$ [1.151 ± 0.025] DRILLED HOLES PLATED WITH $.0003$ [0.008] MIN SnPb OR SN OVER $.001$ [0.03] TO $.003$ [0.08] Cu PLATING TO ACHIEVE $\varnothing .040 \pm .003$ [$1.02 \pm .07$] HOLE.

9. "DIM XXX" TO BE DETERMINED BY THE CUSTOMER.

10. CONNECTOR KEEP-OUT ZONE.

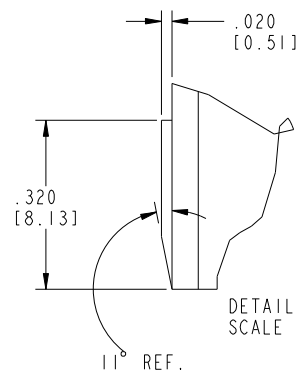
11. RECOMMENDED RETENTION TO PCB
 $\varnothing .13$ [3.3] THRU HOLE FOR #5 SOCKET HEAD CAP SCREW
MAX. HEAD $.205$ [5.2] RECOMMENDED SCREW LENGTH 12mm [$.472$] + PCB THICKNESS.
RECOMMENDED SCREW SEATING TO PCB TORQUE: 2-5 lbf-in (2300-5760 gf-cm).

mat'l code				SEE NOTE 2		tolerances unless otherwise specified		CUSTOMER		FCI		www.fciconnect.com			
ltr	ecn no.	dr	date	linear	$.XX \pm .01/0.X \pm 0.3$		COPY			title			12P + 20S + 3ACP VERT PRESS FIT RECEPT CABLE PORT		
D					$.XXX \pm .005/0.XX \pm 0.13$		projection			product family		PwrBlade		code	
					$.XXX \pm .0020/0.XXX \pm 0.051$		angles			size		dwg no		213	
						$0^\circ \pm 2^\circ$				product family		PwrBlade		code	
				dr	M. MOSTOLLER	8/1/03		INCH/MM		size		dwg no		213	
				engr	M. MOSTOLLER	8/1/03		scale		size		dwg no		213	
				chr	H. BREWBAKER	8/1/03		1:1		size		dwg no		213	
				appd	M. MOSTOLLER	8/1/03				size		dwg no		213	
sheet index		revision sheet								cage code		22526		4	

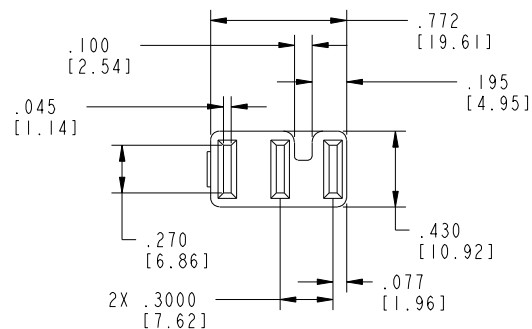
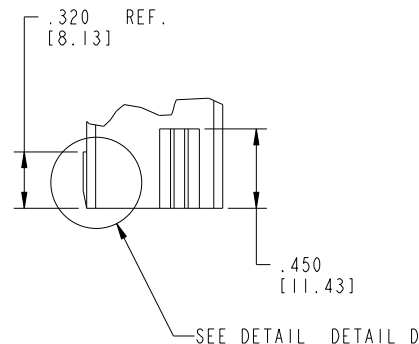
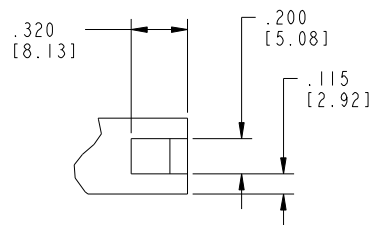


All rights strictly reserved. Reproduction or issue to third parties in any form whatever is not permitted without written authority from the proprietor. Property of FCI. Copyright FCI.


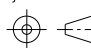

Tous droits strictement réservés. Reproduction ou communication à des tiers interdite sous quelque forme que ce soit sans autorisation écrite du propriétaire. Propriété de c FCI. Droits de reproduction FCI.



DETAIL D
SCALE 3:1



MATING CABLE PLUG (FOR REFERENCE ONLY)

mat'l code				SEE NOTE 2				tolerances unless otherwise specified				CUSTOMER								www.fciconnect.com			
litr		ecn no.		dr		date		linear		.XX±.01/0.X±0.3		projection				title		12P + 20S + 3ACP VERT PRESS FIT RECEPT CABLE PORT					
D						.XXX±.005/0.XX±0.13																	
						.XXX±.0020/0.XXX±0.051																	
								angles		0°±2°													
				dr		M. MOSTOLLER		8/1/03						product family		PwrBlade		code					
				enrg		M. MOSTOLLER		8/1/03						size		dwg no		213					
				chr		H. BREWBAKER		8/1/03										sheet					
						appd		M. MOSTOLLER		8/1/03		scale		1:1		A		51897-007		5 of 5			
sheet index		revision sheet																					

Pro/E

cage code 22526