

Tous droits strictement reserves. Reproduction ou communication o des liers interdite sous quelque forme que ce soit sans autorisation ecrite du proprietaire. Propriete de c FCI. Droits de reproduction FCI.

FCI

All rights strictly reserved. Reproduction or issue to third parties in any form whatever is not permitted without written authority from the proprietor. Property of FCI. Copyright FCI.

A

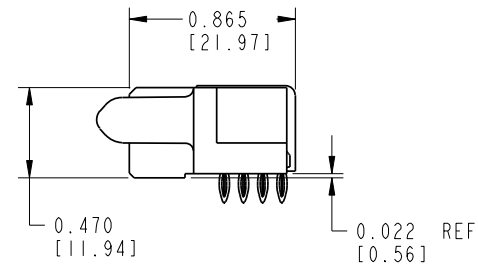
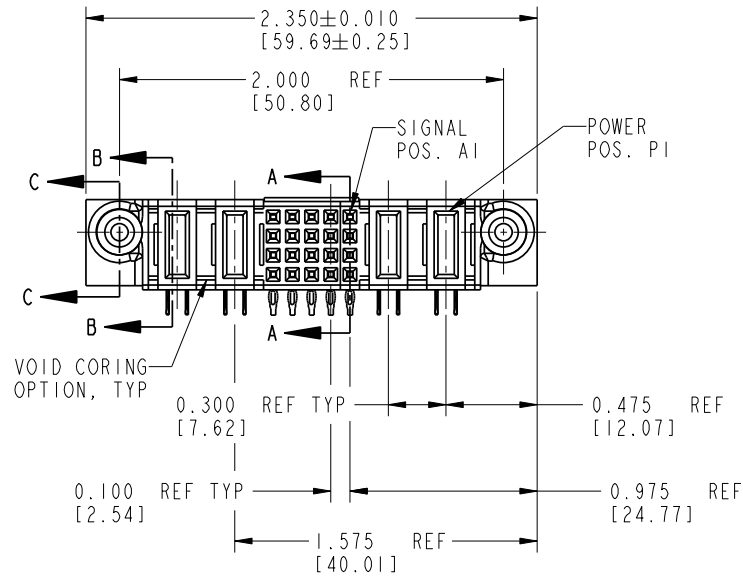
B

1 | 2

3 |

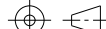

4

PRODUCT No.	ROWS	POWER			SIGNAL					POWER		E1
		E2	P4	P3	5	4	3	2	1	P2	P1	
51866-005-- NOTE: 1	D		PF	PF	S	S	S	S	S	PF	PF	
	C				R	R	R	R	R			
	B				P	P	P	P	P			
	A				N	N	N	N	N			



A

CODE	DIM "M" ±0.010[0.25]	DIM "T" ±0.010[0.25]	CONTACT TYPE
N	N/A [N/A]	0.154 [3.91]	SIGNAL
P	N/A [N/A]	0.154 [3.91]	SIGNAL
R	N/A [N/A]	0.154 [3.91]	SIGNAL
S	N/A [N/A]	0.154 [3.91]	SIGNAL
PF	0.092 [2.34]	0.154 [3.91]	POWER

mat'l code				SEE NOTE		tolerances unless otherwise specified		CUSTOMER		A FCI		www.fciconnect.com	
lir	ecn no.	dr	date	linear	.XX±.01/0.X±0.3		projection 	title 2P + 20S + 2P RIGHT ANGLE PRESSFIT RECEPTACLE	product family PwrBlade	size A	dwg no 51866-005	code 213 sheet 1 of 2	
A	V12501	JWS	10/15/01		.XXX±.005/0.XX±0.13								
B	DG05-0530	GuoJM	12/09/05		.XXXX±.0020/0.XXX±0.051								
					angles 0°±2°								
				dr	J. SHAFFER	10/15/01	INCH/MM 	scale 1:1					
				enrg	J. ALLISON	10/15/01							
				chr	J. ALLISON	10/15/01							
				appd	J. ALLISON	10/15/01							
sheet index		revision sheet		B	B								
				1	2								

A

B

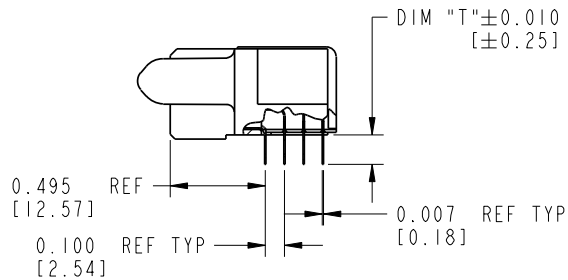
A

B

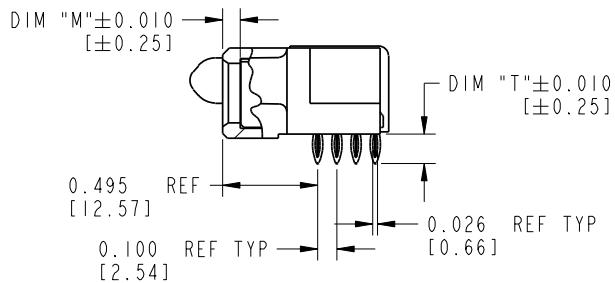
# PRODUCT NUMBER

51866-005--

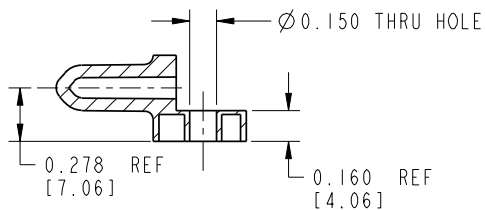
NOTE: 1



SECTION A-A  
SCALE 1:1



SECTION B-B  
SCALE 1:1



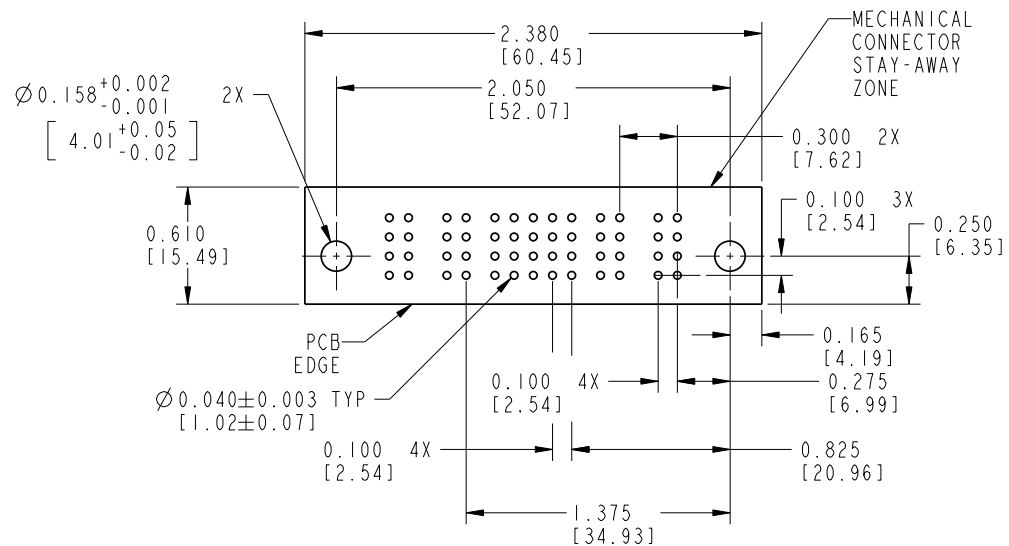
SECTION C-C  
SCALE 1:1

## CONNECTOR NOTES:

① FOR ADDITIONAL INFORMATION, REFER TO DRAWING NUMBER 51866.

## PCB NOTES:

2. ALL DIMENSIONS ARE BASIC UNLESS OTHERWISE SPECIFIED.
3. ALL THROUGH HOLES ARE LOCATED WITH A TRUE POSITION OF 0.004 [0.10]
4. ALL HOLE DIAMETERS ARE FINISHED HOLE SIZE.
5. Ø0.158 THROUGH HOLES ARE UNPLATED.
6. Ø0.0453±0.0010 [1.151±0.025] DRILLED HOLES PLATED WITH 0.0003 [0.008] MIN SnPb OVER 0.001 [0.03] TO 0.003 [0.08] Cu PLATING TO ACHIEVE A Ø0.040±0.003 [1.02±0.07] HOLE.
7. USE FCI CAM TOOL 430140-XXX TO APPLY CONNECTOR TO PCB.



mat'l code				SEE NOTE		tolerances unless otherwise specified		CUSTOMER		A FCI		www.fciconnect.com	
lir	ecn no.	dr	date	linear	projection	linear	projection	linear	projection	linear	projection	linear	projection
B						.XX±.01/0.X±0.3							
						.XXX±.005/0.XX±0.13							
						.XXXX±.0020/0.XXX±0.051							
						0°±2°							
				dr	J. SHAFFER	10/15/01							
				enrg	J. ALLISON	10/15/01							
				chr	J. ALLISON	10/15/01							
				appd	J. ALLISON	10/15/01							
sheet index	revision	sheet											

Pro/E

PDM: Rev:B

STAT:US:Released

Printed: Aug 14, 2007