



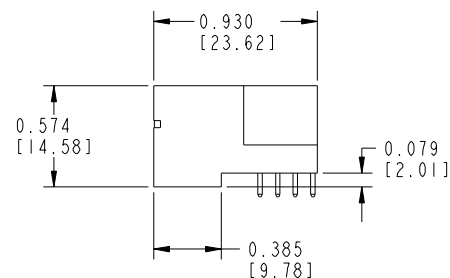
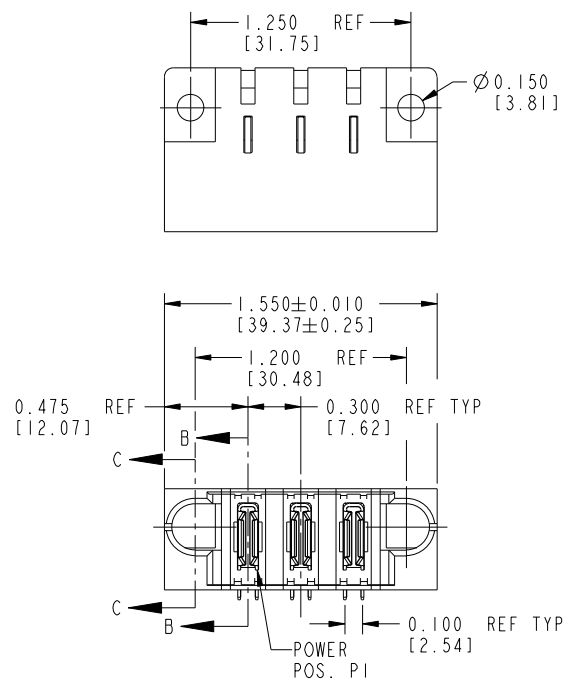
All rights strictly reserved. Reproduction or issue to third parties in any form whatever is not permitted without written authority from the proprietor. Property of FCI. Copyright FCI.

Tous droits strictement réservés. Reproduction ou communication à des tiers interdite sous quelque forme que ce soit sans autorisation écrite du propriétaire. Propriété de c FCI. Droits de reproduction FCI.

CODE	CONTACT TYPE
PA	POWER

PRODUCT No.	ROWS	POWER				
		E1	P1	P2	P3	E2
51812-001	D C B A		PA	PA	PA	

Note: ①



mat'l code				NOTE 1		tolerances unless otherwise specified		CUSTOMER COPY		FCI		www.fciconnect.com	
litr	ecn no.	dr	date			linear	.XX±.01/0.X±0.3	projection		title	3ACP	product family	PwrBlade
A	V12104	JWS	7/23/01				.XXX±.005/0.XX±0.13			RIGHT ANGLE SOLDER HEADER		size	213
B	DG05-0125	GuoJM	05/20/05				.XXX±.0020/0.XXX±0.051					dwg no	51812-001
C	DG07-0396	SH	10/08/07			angles	0°±2°					sheet	1 OF 2
						dr	J. SHAFFER 7/23/01	INCH/MM					
						enrg	E. TREECE 7/23/01	scale	1:1				
						chr	E. TREECE 7/23/01						
						appd	E. TREECE 7/23/01						
sheet index	revision sheet	C	C										
		I	2										

Pro/E

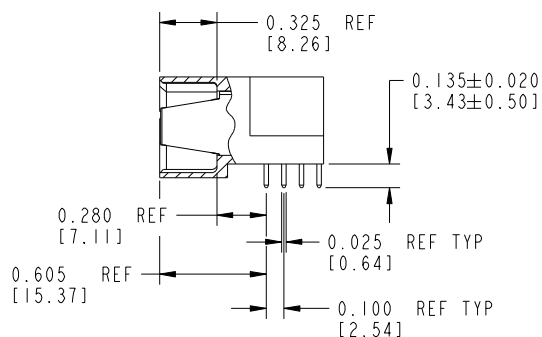
cage code 22526

Tous droits strictement réservés. Reproduction ou communication à des tiers interdite sous quelque forme que ce soit sans autorisation écrite du propriétaire. Propriété de c FCI. Droits de reproduction FCI.

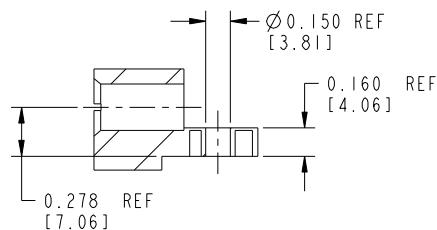


All rights strictly reserved. Reproduction or issue to third parties in any form whatever is not permitted without written authority from the proprietor. Property of FCI. Copyright FCI.

PRODUCT NUMBER  
51812-001--  
Note: ①



SECTION B-B



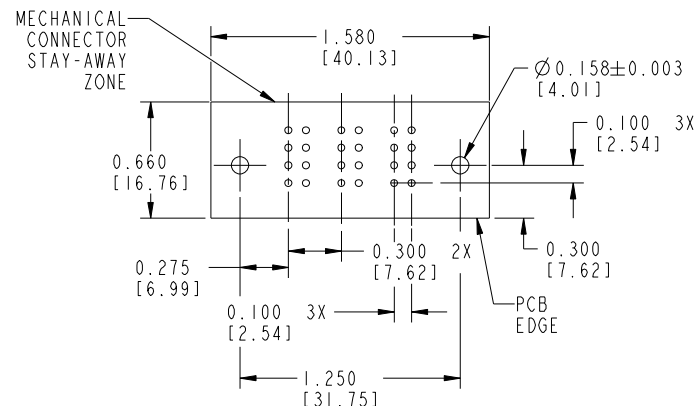
SECTION C-C

CONNECTOR NOTES:

- ① FOR ADDITIONAL INFORMATION, REFER TO DRAWING NUMBER 51812.

PCB NOTES:

- ALL DIMENSIONS ARE BASIC UNLESS OTHERWISE SPECIFIED.
- ALL THROUGH HOLES ARE LOCATED WITH A TRUE POSITION OF 0.004 [0.10]
- ALL HOLE DIAMETERS ARE FINISHED HOLE SIZE
- Ø0.158[4.01] THROUGH HOLES ARE UNPLATED
- Ø0.0453±0.0010 [1.151±0.025] DRILLED HOLES PLATED WITH 0.0003 [0.008] MIN SnPb or Sn OVER 0.001 [0.03] TO 0.003 [0.08] Cu PLATING TO ACHIEVE A Ø&d853:SUPP\_51552-001-PCB HOLE.



RECOMMENDED PCB LAYOUT

NOTE 1				Tolerances unless otherwise specified		CUSTOMER COPY		FCI	
litr	ecr no.	dr	date	linear	angular	projection	title	product family	code
				.XX±.01/0.X±0.3	0°±2°		3ACP	PwrBlade	213
				.XXX±.005/0.XX±0.13			RIGHT ANGLE SOLDER HEADER		
				.XXX±.0020/0.XXX±0.051					
				J. SHAFFER	7/23/01	INCH/MM	product family	PwrBlade	code
				E. TREECE	7/23/01	scale	size	dwg no	sheet
				E. TREECE	7/23/01	1:1	A	51812-001	2
				E. TREECE	7/23/01				
sheet index	revision sheet								

Pro/E

cage code 22526