

Tous droits strictement réservés. Reproduction ou communication a des tiers interdite sous quelque forme que ce soit sans autorisation écrite du propriétaire. Propriété de c FCI. Droits de reproduction FCI.

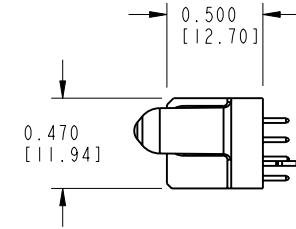
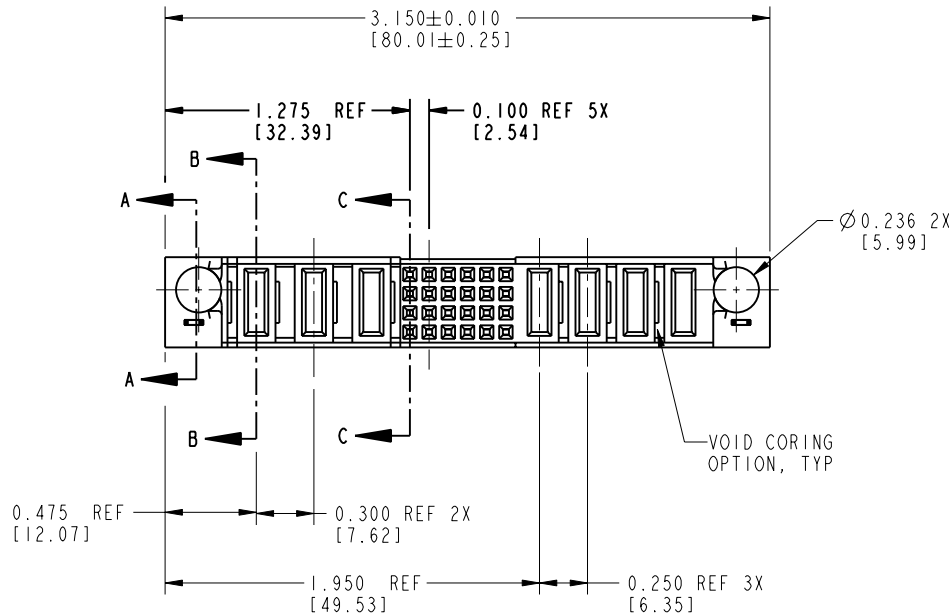
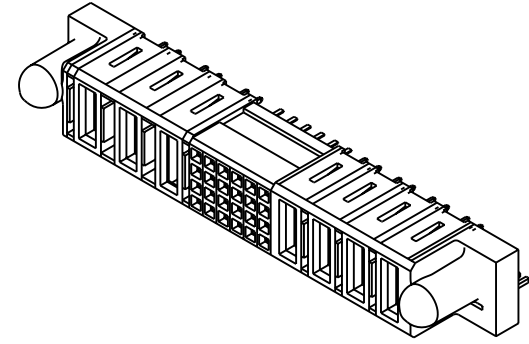
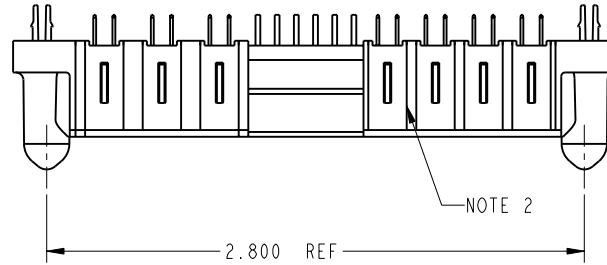


All rights strictly reserved. Reproduction or issue to third parties in any form whatever is not permitted without written authority from the proprietor. Property of FCI. Copyright FCI.

PRODUCT NUMBER

51797-001--

NOTE: ③



mat'l code				NOTE 1		tolerances unless otherwise specified		CUSTOMER		FCI	
lfr	ecn no.	dr	date	linear	.XX±.01/0.X±0.3	.XXX±.005/0.XX±0.13	.XXXX±.0020/.XXX±.051	COPY		www.fciconnect.com	
A	V02395	JRW	10-13-00					projection		title	
B	DG05-0192	SJ	06/27/05					INCH/MM		4P + 24S + 3ACP	
C	DG06-0244	JMG	06/22/06					scale		VERTICAL SOLDERTAIL RECEPTACLE	
				dr	E. KORFF	06-23-00		product family		PwrBlade	code
				engr	J. BROWN	06-23-00		size		dwg no	213
				chr	J. BROWN	06-23-00		A		51797	sheet
				appd	J. BROWN	06-23-00					1 of 3
sheet index	revision	C	C	C							
	sheet	1	2	3							

Pro/E

3

cage code 22526

4

PDM: Rev:C

STATUS: Released

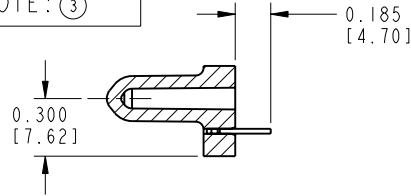
Printed: Dec 07, 2007



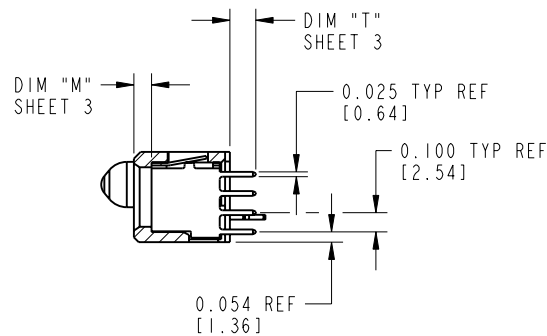
PRODUCT NUMBER

51797-001--

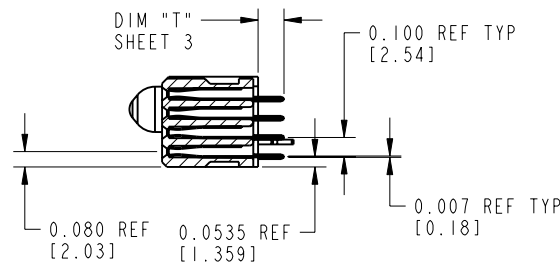
NOTE: ③



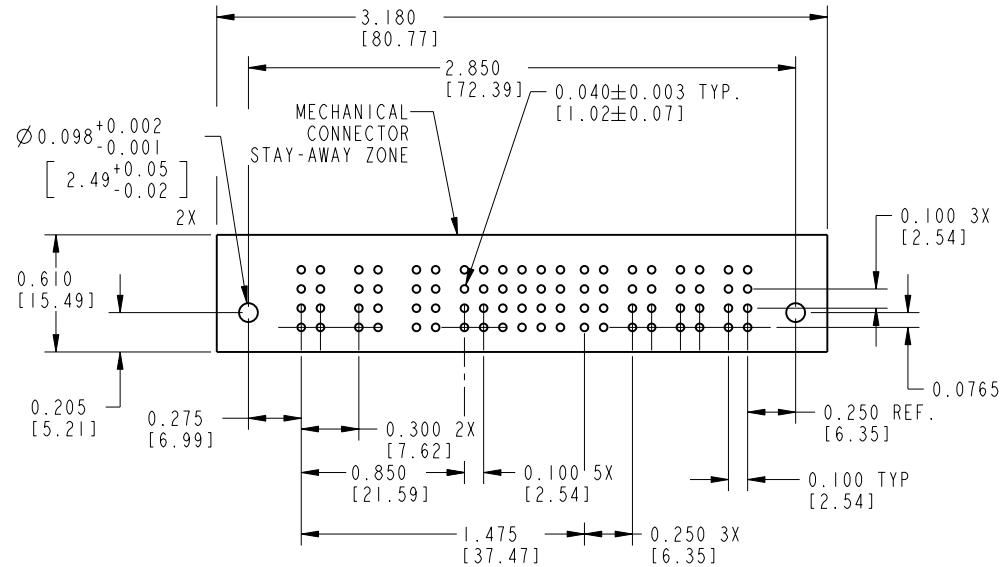
SECTION A-A



SECTION B-B



SECTION C-C



RECOMMENDED PCB LAYOUT

mat'l code				NOTE 1		tolerances unless otherwise specified		CUSTOMER		FCI	
lfr	ecr no.	dr	date					COPY			www.fciconnect.com
c						linear	.XX±.01/0.X±0.3	projection		title	4P + 24S + 3ACP
							.XXX±.005/0.XX±0.13				VERTICAL SOLDER TAIL RECEPTACLE
						angles	.XXX±.0020/.XXX±.051			product family	PwrBlade
							0°±2°			size	213
						dr	E. KORFF 06-23-00	INCH/MM		dwg no	51797
						enqr	J. BROWN 06-23-00	scale			sheet 2
						chr	J. BROWN 06-23-00				
						appd	J. BROWN 06-23-00				
sheet index	revision sheet										

Pro/E

3

cage code 22526

4



1 | 2

3 |

4

PRODUCT NUMBER		ITEM NO.	QTY	DIM "M" MATING LENGTH ±.010	DIM "T" TAIL LENGTH ±.010	CONTACT TYPE	PLATING FOR MATING	PLATING FOR TAIL
51797-001-- NOTE: ③								
		PD	6	0.092 [2.34]	0.135 [3.43]	POWER	30 u'' [.76um] Au	SnPb
		PA	1	0.042 [1.07]	0.135 [3.43]	POWER	30 u'' [.76um] Au	SnPb
		HA	2	N/A [N/A]	N/A [N/A]	HOLD-DOWN	N/A [N/A]	SnPb
		E	24	N/A [N/A]	0.135 [3.43]	SIGNAL	30 u'' [.76um] Au	Sn


PRODUCT No.	ROWS		POWER				SIGNAL					POWER				
		E2	P7	P6	P5	6	5	4	3	2	1	P4	P3	P2	P1	E1
51797 - 001-- NOTE: ③	D C B A	HA	PD	PD	PA	E	E	E	E	E	E	PD	PD	PD	PD	HA
	E					E	E	E	E	E						
	E					E	E	E	E	E						
	E					E	E	E	E	E						

CONNECTORS - NOTES:

- HOUSING MATERIAL: UL 94 V-0 GLASS FILLED HIGH TEMP THERMOPLASTIC
SIGNAL CONTACT MATERIAL: COPPER ALLOY
POWER CONTACT MATERIAL: COPPER ALLOY
- "MANUFACTURER" NAME, P/N, AND DATE CODE TO APPEAR ON
THIS SURFACE
- 51797-001;51797-001LF;51797-001GLF PLATING SPEC. SEE PRINT:10064183
- PRODUCT SPECIFICATION GS-12-149

PCB - NOTES

- ALL DIMENSIONS ARE BASIC UNLESS OTHERWISE SPECIFIED.
- ALL THROUGH HOLES ARE LOCATED WITH A TRUE POSITION OF .004
- ALL HOLE DIAMETERS ARE FINISHED HOLE SIZE
- Ø.098 THROUGH HOLES ARE UNPLATED
- Ø.0453/1.151 DRILLED HOLES
PLATED WITH .0003/.007 MIN SnPb
OVER .001/.03 to .003/.08 Cu PLATING TO ACHIEVE
A .040±.003/1.02±.08 HOLE

mat'l code				NOTE 1		tolerances unless otherwise specified		CUSTOMER		FCI		
lfr	ecn no.	dr	date	linear	.XX±.01/0.X±0.3		COPY		www.fciconnect.com			
C					.XXX±.005/0.XX±0.13		projection		title			
				angles	.XXX±.0020/.XXX±.051				4P + 24S + 3ACP			
					0°±2°		INCH/MM		VERTICAL SOLDER TAIL RECEPTACLE			
				dr	E. KORFF	06-23-00	scale		product family		PwrBlade	code
				engr	J. BROWN	06-23-00	1:1		size		dwg no	213
				chr	J. BROWN	06-23-00			A		51797	sheet
				appd	J. BROWN	06-23-00						3
sheet index		revision sheet										

1 | 2

Pro/E

3 |

cage code 22526

4