

Tous droits strictement reserves. Reproduction ou communication a des tiers interdite  
sous quelque forme que ce soit sans autorisation écrite du propriétaire.  
Propriete de c FCI. Droits de reproduction FCI.

















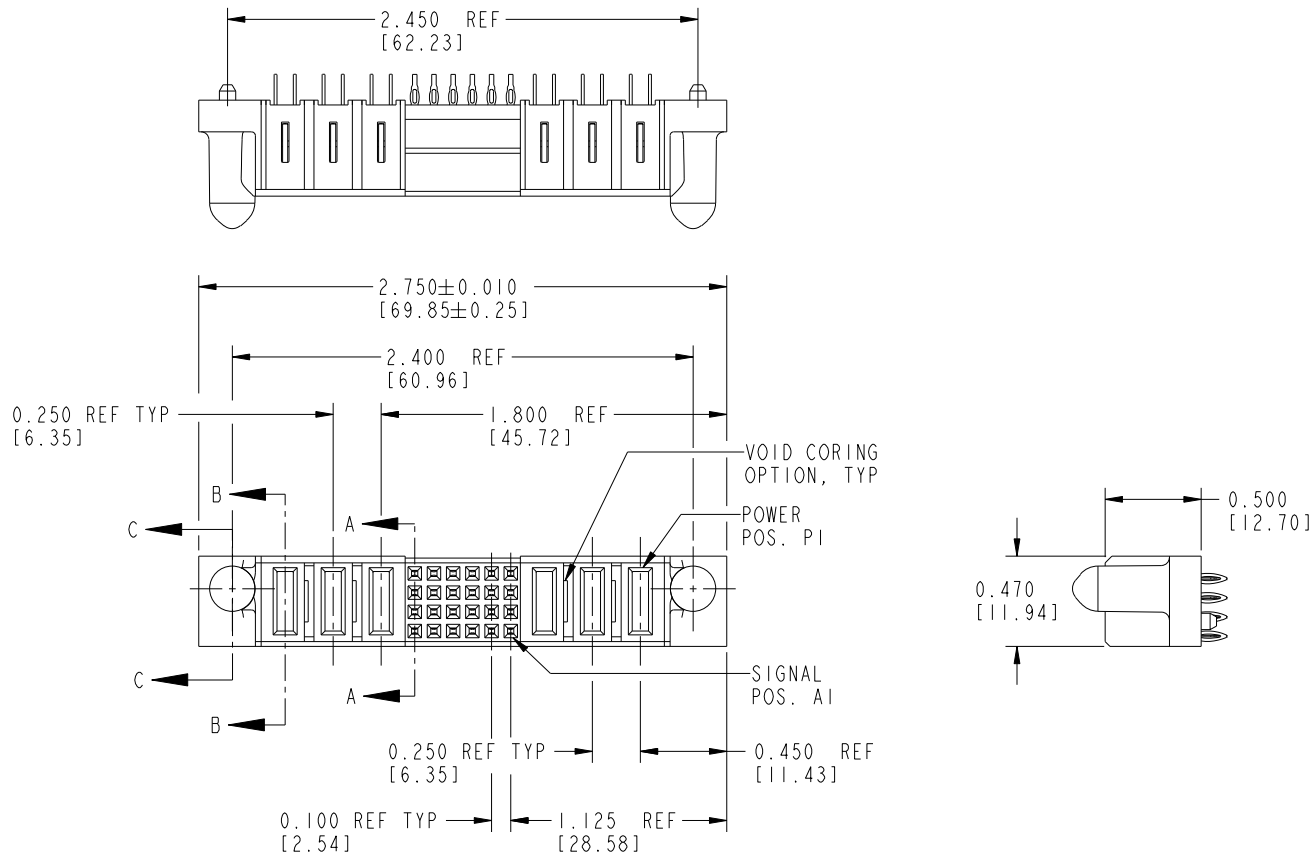
All rights strictly reserved. Reproduction or issue to third parties in any  
form whatever is not permitted without written authority from the proprietor.  
Property of FCI. Copyright FCI.

1 | 2

3 |

4

PRODUCT No.	ROWS	POWER				SIGNAL							POWER			
		E2	P6	P5	P4	6	5	4	3	2	1	P3	P2	P1	E1	
51750-011-- NOTE:3	D C B A															
			PC	PF	PC	F	F	F	F	F	F	PF	PC	PF		
						F	F	F	F	F	F					
						F	F	F	F	F	F					



CODE	DIM "M" ±0.010 [0.25]	CONTACT TYPE
PC	0.042 [1.07]	POWER
PF	0.092 [2.34]	POWER
F	N/A [N/A]	SIGNAL

mat'l code				NOTE 2		tolerances unless otherwise specified		CUSTOMER		FCI	
ltr	ecn no.	dr	date					COPY			www.fciconnect.com
A	V02930	CGD	12/14/00	linear		.XX±.01/0.X±0.3		projection		title	3P + 24S + 3P
B	DG05-0504	GJM	12/15/05			.XXX±.005/0.XX±0.13				product family	PwrBlade
C	DG08-0251	W D	09/13/08	angles		.XXX±.0020/.XXX±.051		INCH/MM		size	213
						0°±2°		scale		dwg no	51750-011
				dr	C, DAILY	12/14/00		1:1		sheet	1 of 3
				engr	J. DODDS	12/14/00					
				chr	J. DODDS	12/14/00					
				appd	J. DODDS	12/14/00					
sheet index	revision sheet	C	C	C							
1	2	3									

1 | 2

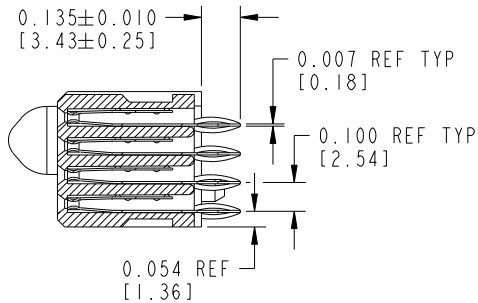
Pro/E

PDM: Rev:C

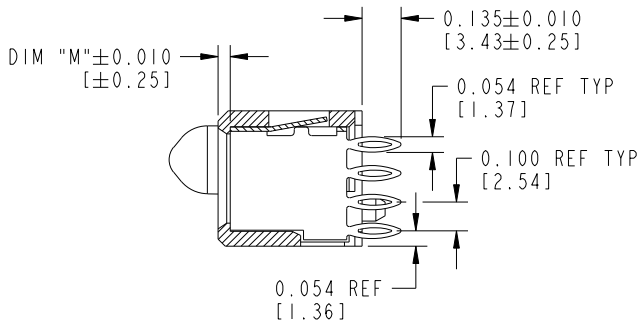
STATUS: Released

Printed: Sep 20, 2008

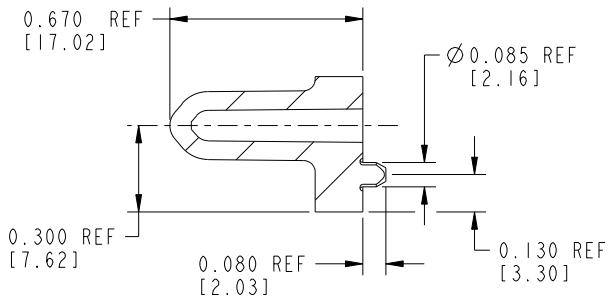
PRODUCT NUMBER  
51750-011



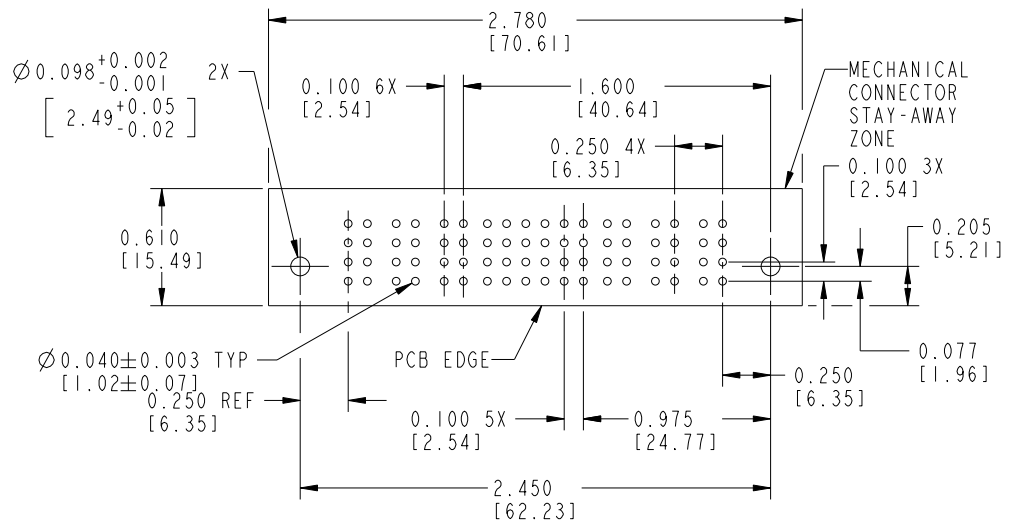
SECTION A-A  
SCALE 3:2



SECTION B-B  
SCALE 3:2



SECTION C-C  
SCALE 3:2



RECOMMENDED PCB LAYOUT

mat'l code				NOTE 2		tolerances unless otherwise specified		CUSTOMER		FCI	
ltr	ecn no.	dr	date	linear		.XX±.01/0.X±0.3		COPY		www.fciconnect.com	
c				angles		.XXX±.005/0.XX±0.13		projection		title	
						.XXXX±.0020/.XXX±.051		INCH/MM		3P + 24S + 3P	
				dr	C, DAILY	12/14/00		scale		VERTICAL PRESS-FIT RECEPTACLE	
				enrg	J. DODDS	12/14/00				product family PwrBlade	
				chr	J. DODDS	12/14/00				size dwg no	
				appd	J. DODDS	12/14/00				A 51750-011	
sheet index	revision sheet									code	213
										sheet	2



1 | 2

3 |

4

PRODUCT NUMBER

51750-011\_\_

NOTES:

1. DIMENSIONS AND TOLERANCES ARE IN ACCORDANCE WITH ASME Y14.5M, 1994 UNLESS OTHERWISE

CONNECTOR NOTES:

2. HOUSING MATERIAL: UL 94 V-0 GLASS FILLED HIGH-TEMP THERMOPLASTIC  
POWER CONTACT MATERIAL: COPPER ALLOY  
SIGNAL PIN MATERIAL: COPPER ALLOY

3. SEE ITEM 7 & 8 IN PRINT 10064183 FOR PLATING SPEC OF 51750-011 AND 51750-011LF RESPECTIVELY.

4. MANUFACTURER'S NAME, P/N, AND DATE CODE TO APPEAR ON THIS SURFACE.

5. PRODUCT SPECIFICATION GS-12-149. APPLICATION SPECIFICATION BUS-20-067.

PCB NOTES:

6. ALL DIMENSIONS ARE BASIC UNLESS OTHERWISE SPECIFIED.

7. ALL THROUGH HOLES ARE LOCATED WITH A TRUE POSITION OF .004 [0.10]

8. ALL HOLE DIAMETERS ARE FINISHED HOLE SIZE

9.  $\varnothing 0.098$  [2.49] THROUGH HOLES ARE UNPLATED

10.  $\varnothing 0.0453 \pm 0.0010$  [1.151  $\pm 0.025$ ] DRILLED HOLES PLATED WITH 0.0003 [0.008] MIN SnPb OVER 0.001 [0.03] TO 0.003 [0.08] Cu PLATING TO ACHIEVE A  $\varnothing 0.040 \pm 0.003$  [1.02  $\pm 0.07$ ] HOLE.

11. A  $\triangle$  C SYMBOL WILL BE NEXT TO ANY DIMENSION, VIEW, OR NOTE WHICH HAS BEEN MODIFIED WITH THE CURRENT DRAWING REVISION.

mat'l code				NOTE 2			tolerances unless otherwise specified			CUSTOMER		
ltr	ecn no.	dr	date							COPY		
c				linear			.XX $\pm$ .01/0.X $\pm$ 0.3			projection		
							.XXX $\pm$ .005/0.XX $\pm$ 0.13					
				angles			.XXX $\pm$ .002/.XXX $\pm$ .051					
							0° $\pm$ 2°					
				dr	C, DAILY	12/14/00						
				enrg	J. DODDS	12/14/00						
				chr	J. DODDS	12/14/00						
				appd	J. DODDS	12/14/00						
sheet index		revision sheet										



www.fciconnect.com

title 3P + 24S + 3P  
VERTICAL PRESS-FIT RECEPTACLE

product family PwrBlade code 213

size dwg no 51750-011 sheet 3

A

scale 1:1

INCH/MM

A

A

B

B

1 | 2

Pro/E

PDM: Rev: C

STATUS: Released

Printed: Sep 20, 2008