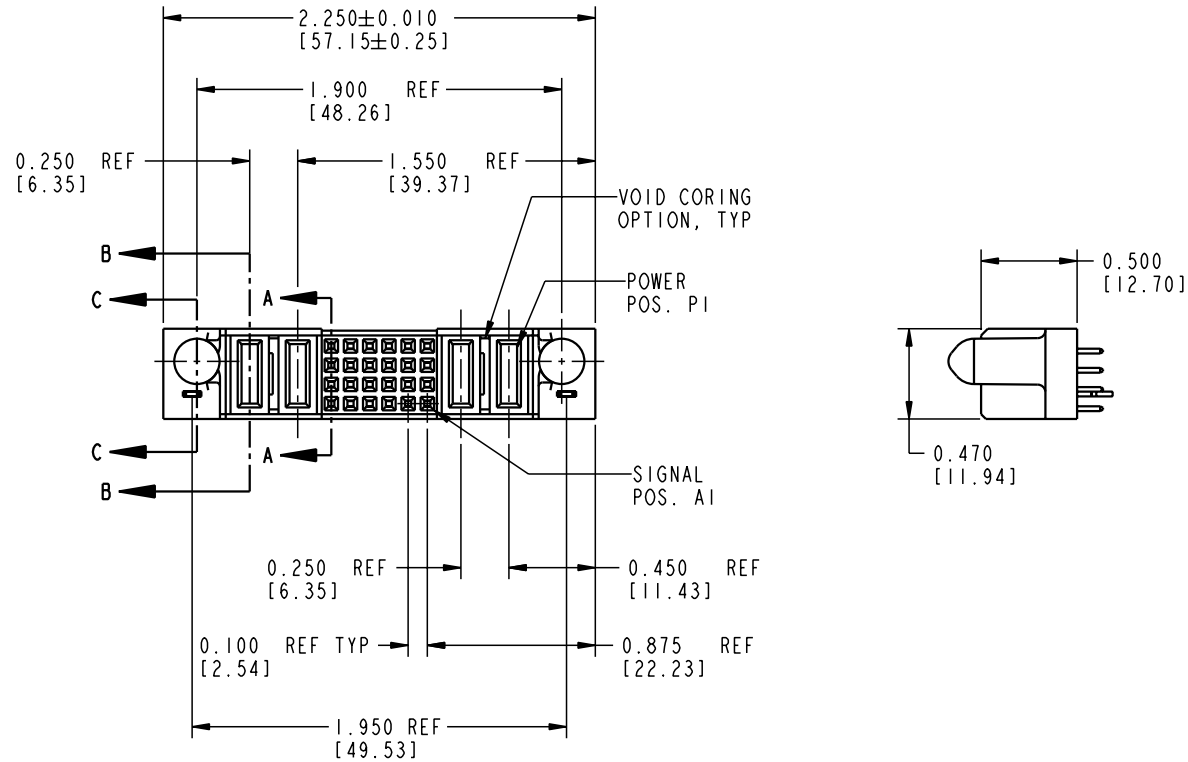


Tous droits strictement reserves. Reproduction ou communication a des tiers interdite sous quelque forme que ce soit sans autorisation écrite du propriétaire. Propriété de c FCI. Droits de reproduction FCI.






All rights strictly reserved. Reproduction or issue to third parties in any form whatever is not permitted without written authority from the proprietor. Property of FCI. Copyright FCI.

PRODUCT No.	ROWS	POWER		SIGNAL							POWER		E1
		E2	P4	P3	6	5	4	3	2	1	P2	P1	
51740-10202402AA	D	○	PA	PA	EE	EE	EE	EE	EE	EE	PA	PA	○
	C	○	PA	PA	EE	EE	EE	EE	EE	EE	PA	PA	○
	B	○	PA	PA	EE	EE	EE	EE	EE	EE	PA	PA	○
	A	○	PA	PA	EE	EE	EE	EE	EE	EE	PA	PA	○



CODE	CONTACT TYPE
E	SIGNAL
PA	POWER
HA	HOLD-DOWN

mat'l code				NOTE 1		tolerances unless otherwise specified		CUSTOMER		 <b>ELECTRONICS</b> www.fciconnect.com	
lfr	ecn no.	dr	date	linear	.XX±.01/0.X±0.3		projection 	COPY	title 2P + 24S + 2P VERTICAL SOLDER RECEPTACLE	product family PwrBlade	code 213
A	V02749	CGD	11/28/00		.XXX±.005/0.XX±0.13						
					.XXX±.0020/.XXX±.051						
				angles	0°±2°		INCH/MM 	scale 1:1	size A	dwg no 51740-10202402AA	sheet 1 of 2
				dr	C. DAILY	11/28/00					
				enrg	J. DODDS	11/28/00					
				chr	J. DODDS	11/28/00					
				appd	J. DODDS	11/28/00					
sheet index	revision sheet	A 1	A 2								

Pro/E

3

cage code 22526

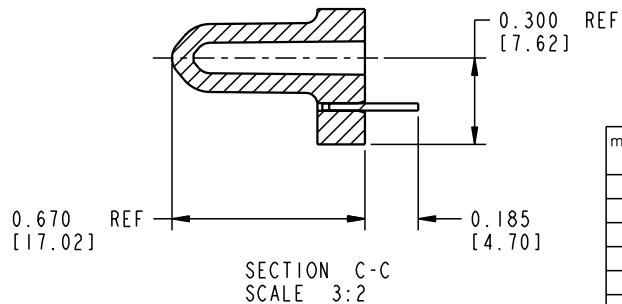
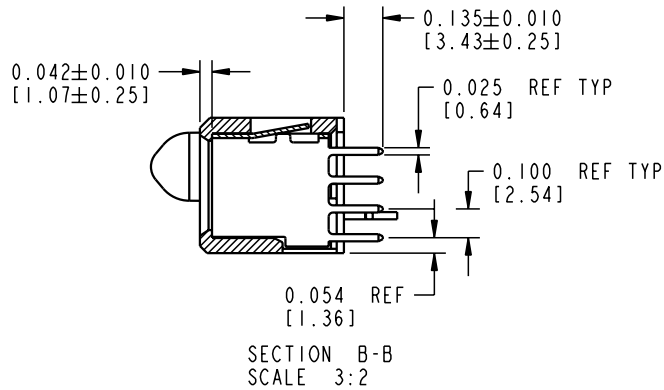
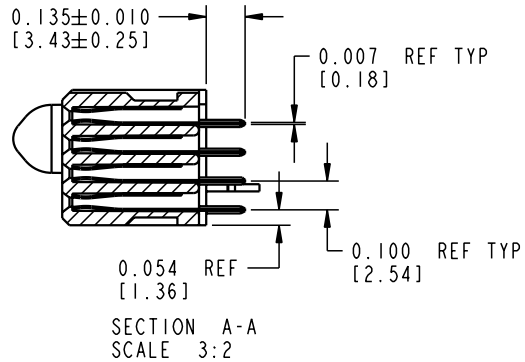
4

PDM: Rev:A

STATUS: Released

Printed: Aug 14, 2007

PRODUCT NUMBER  
51740-10202402AA

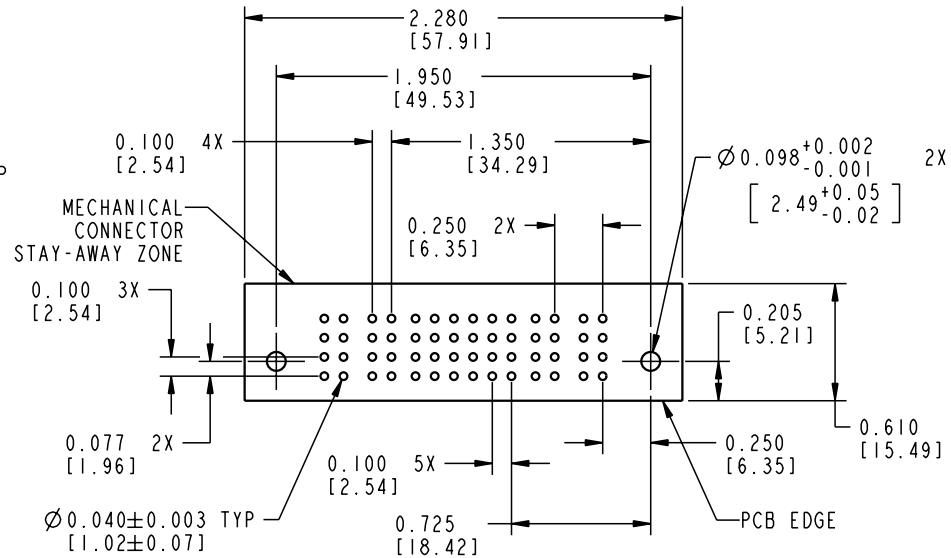


CONNECTOR NOTES:

1. FOR ADDITIONAL INFORMATION, REFER TO DRAWING NUMBER 51740.

PCB NOTES:

2. ALL DIMENSIONS ARE BASIC UNLESS OTHERWISE SPECIFIED.  
3. ALL THROUGH HOLES ARE LOCATED WITH A TRUE POSITION OF 0.004 [0.10]  
4. ALL HOLE DIAMETERS ARE FINISHED HOLE SIZE  
5.  $\varnothing 0.098$  [2.49] THROUGH HOLES ARE UNPLATED  
6.  $\varnothing 0.0453 \pm 0.0010$  [1.151  $\pm$  0.025] DRILLED HOLES PLATED WITH 0.0003 [0.007] MIN SnPb OVER 0.001 [0.03] TO 0.003 [0.08] Cu PLATING TO ACHIEVE A  $\varnothing 0.040 \pm .003$  [1.02  $\pm$  0.07] HOLE]



RECOMMENDED PCB LAYOUT

mat'l code				NOTE 1		tolerances unless otherwise specified		CUSTOMER		FCI ELECTRONICS	
ltr	ecn no.	dr	date	linear		.XX±.01/0.X±0.3		projection	COPY	www.fciconnect.com	
A						.XXX±.005/0.XX±0.13				title	
						.XXX±.0020/.XXX±.051				2P + 24S + 2P	
				angles		0°±2°		INCH/MM	scale	VERTICAL SOLDER RECEPTACLE	
				dr	C. DAILY	11/28/00				product family	
				enrg	J. DODDS	11/28/00				PwrBlade	
				chr	J. DODDS	11/28/00		1:1	size	code	
				appd	J. DODDS	11/28/00				213	
										sheet	
sheet index	revision	sheet								2	

Pro/E

3

cage code 22526

4

PDM: Rev:A

STATUS: Released

Printed: Aug 14, 2007