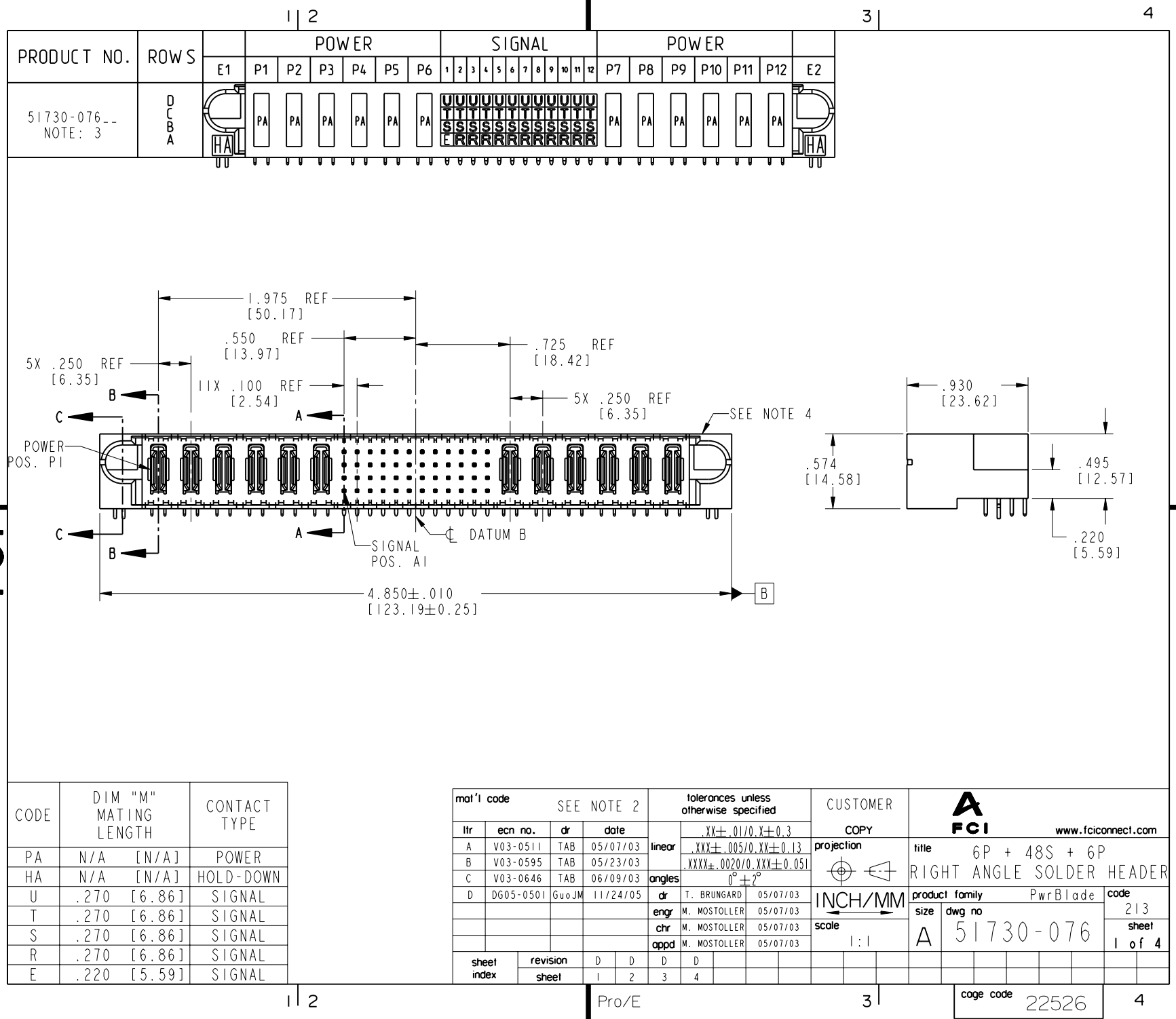


Tous droits strictement réservés. Reproduction ou communication à des tiers interdite sous quelque forme que ce soit sans autorisation écrite du propriétaire. Propriété de c FCI. Droits de reproduction FCI.

FCI

All rights strictly reserved. Reproduction or issue to third parties in any form whatever is not permitted without written authority from the proprietor. Property of FCI. Copyright FCI.



Pro/E

PDM: Rev:D

STATUS: Released

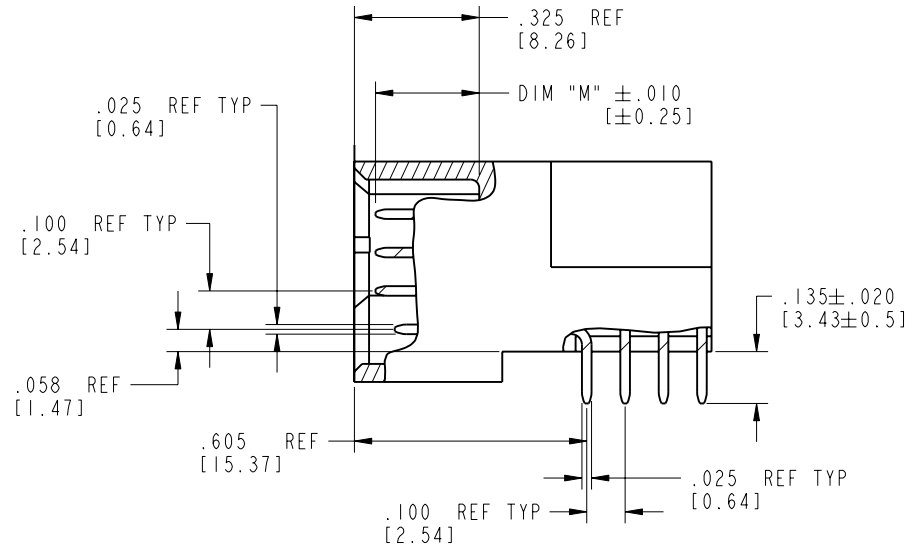
Printed: Aug 12, 2007

Tous droits strictement réservés. Reproduction ou communication a des tiers interdite sous quelque forme que ce soit sans autorisation écrite du propriétaire. Propriété de c FCI. Droits de reproduction FCI.

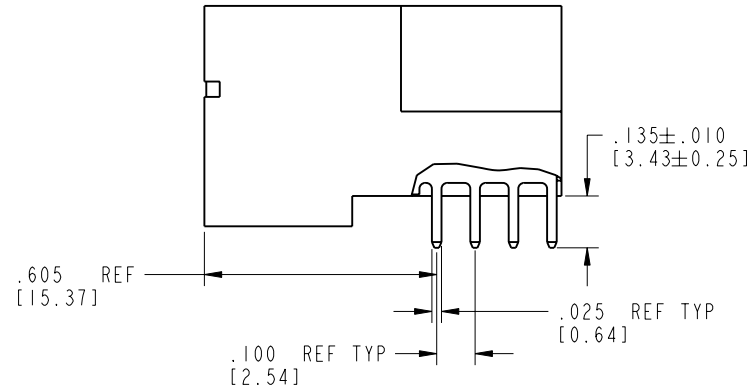
FCI

All rights strictly reserved. Reproduction or issue to third parties in any form whatever is not permitted without written authority from the proprietor. Property of FCI. Copyright FCI.

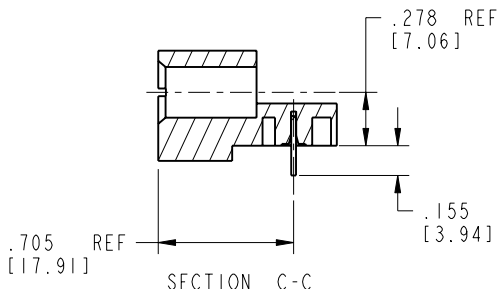
PRODUCT NUMBER
51730-076--
NOTE: 3



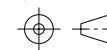
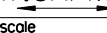
BROKEN-OUT SECTION A-A
SCALE 2:1



BROKEN-OUT SECTION B-B
SCALE 2:1



SECTION C-C

mat'l code				SEE NOTE 2		tolerances unless otherwise specified		CUSTOMER		<div><div>A</div><div>FCI</div><div>www.fciconnect.com</div></div>				
lfr	ecn no.	dr	date	linear	.XX±.01/0.X±0.3		projection		title 6P + 48S + 6P RIGHT ANGLE SOLDER HEADER					
D					.XXX±.005/0.XX±0.13									
					.XXX±.0020/0.XXX±0.051									
				angles	0°±2°		INCH/MM		product family		PwrBlade	code		
				dr	T. BRUNGARD 05/07/03				scale	size	dwg no	A	51730-076	213
				enqr	M. MOSTOLLER 05/07/03									sheet
				chr	M. MOSTOLLER 05/07/03									
				appd	M. MOSTOLLER 05/07/03									
sheet index		revision sheet												

cage code 22526

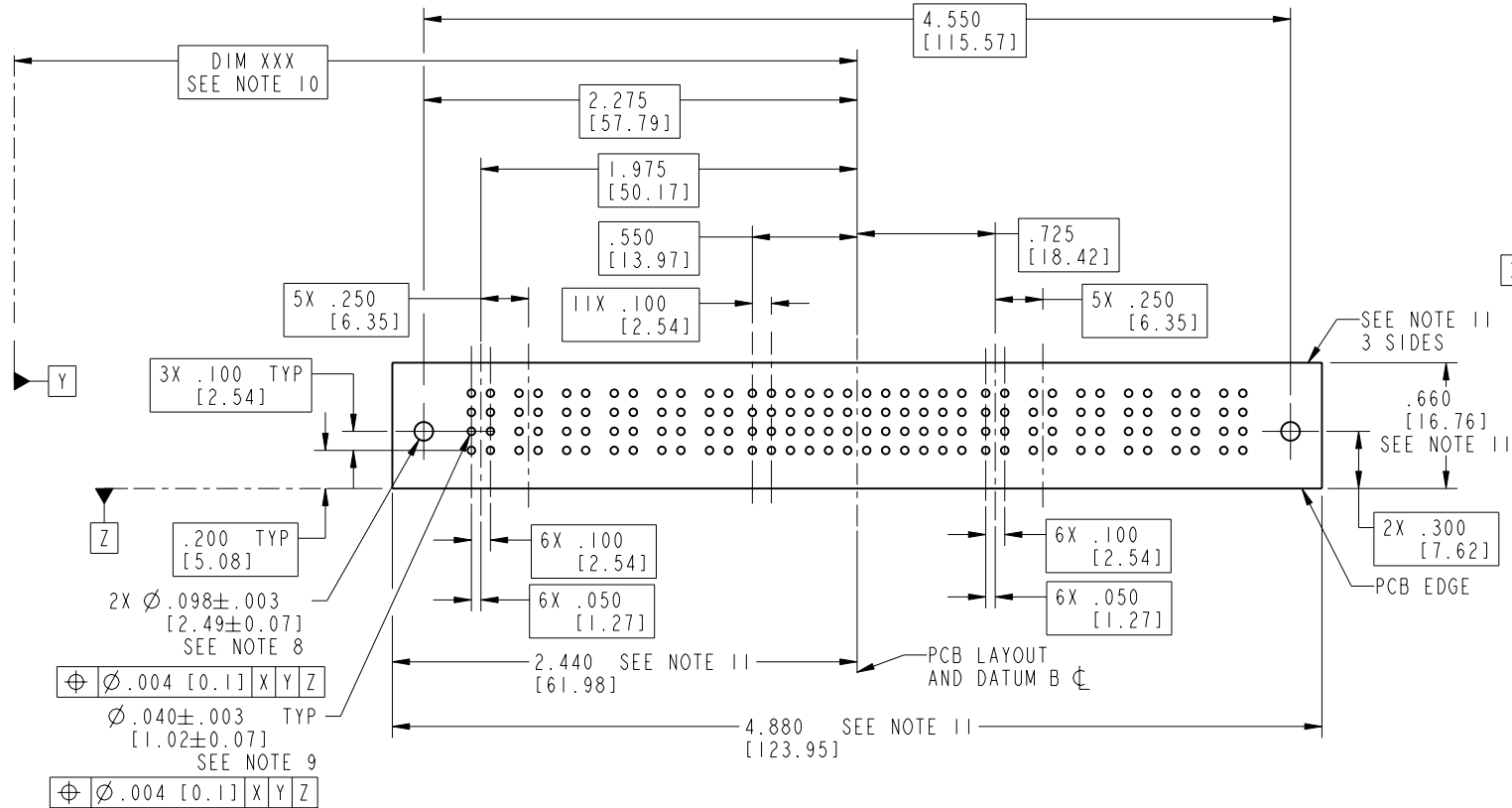
Pro/E

Tous droits strictement réservés. Reproduction ou communication o des liers interdite sous quelque forme que ce soit sans autorisation écrite du propriétaire. Propriété de c FCI. Droits de reproduction FCI.

FCI

All rights strictly reserved. Reproduction or issue to third parties in any form whatever is not permitted without written authority from the proprietor. Property of FCI. Copyright FCI.

PRODUCT NUMBER
51730-076--
NOTE: 3



RECOMMENDED PCB LAYOUT

mat'l code				tolerances unless otherwise specified		CUSTOMER		A FCI		www.fciconnect.com	
lfr	ecn no.	dr	date	linear	.XX±.01/0.X±0.3	projection	COPY	title	6P + 48S + 6P	RIGHT ANGLE SOLDER HEADER	product family
D					.XXX±.005/0.XX±0.13						
					.XXX±.0020/0.XX±0.051						
				angles	0°±2°	INCH/MM	scale	A	51730-076	3 of 4	code
				dr	T. BRUNGARD 05/07/03						
				enr	M. MOSTOLLER 05/07/03						
				chr	M. MOSTOLLER 05/07/03	1:1	A	51730-076	3 of 4	3 of 4	sheet
				appd	M. MOSTOLLER 05/07/03						
sheet index	revision	sheet									

Pro/E

cage code 22526

PDM: Rev:D

STATUS: Released

Printed: Aug 12, 2007

PRODUCT NUMBER
51730-076--
NOTE: 3

NOTES:

1. DIMENSIONS AND TOLERANCES ARE IN ACCORDANCE WITH
ASME Y14.5M, 1994 UNLESS OTHERWISE SPECIFIED.

CONNECTOR NOTES:

2. HOUSING MATERIAL: UL 94 V-0 GLASS FILLED
HIGH-TEMP THERMOPLASTIC
POWER CONTACT MATERIAL: COPPER ALLOY
SIGNAL PIN MATERIAL: COPPER ALLOY

3. PLATING:
51730-076 Singal Pin:30u"/0.76um Au OVER 50u"/1.27um Ni ON THE CONTACT AREA,
AND 100u"/2.54um SnPb PLATING OVER 50u"/1.27um Ni ON THE TERMINATION SECTION.
Power Pin:30u"/0.76um Au OVER 50u"/1.27um Ni ON THE CONTACT AREA,
AND 100u"/2.54um SnPb PLATING OVER 50u"/1.27um Ni ON THE TERMINATION SECTION.

51730-076LF Singal Pin:30u"/0.76um Au OVER 50u"/1.27um Ni ON THE CONTACT AREA,
AND 78u"/2.00um Sn PLATING OVER 50u"/1.27um Ni ON THE TERMINATION SECTION.
Power Pin:30u"/0.76um Au OVER 50u"/1.27um Ni ON THE CONTACT AREA,
AND 78u"/2.00um Sn PLATING OVER 50u"/1.27um Ni ON THE TERMINATION SECTION.

PART NUMBER 51730-076LF MEETS EUROPEAN UNION DIRECTIVE AND JOTHER COUNTRY REGULATIONS AS DESCRIBED IN GS-22-008.

THE HOUSING WILL WITHSTAND EXPOSURE TO 260° PEAK TEMPERATURE FOR 10 SECONDS IN A WAVE SOLDER APPLICATION WITH A CIRCUIT BOARD.

4. MANUFACTURER'S NAME, P/N, AND DATE CODE TO APPEAR ON
THIS SURFACE.

5. PRODUCT SPECIFICATION GS-12-149.
APPLICATION SPECIFICATION BUS-20-067.

6. PACKAGED IN TRAYS.

PCB NOTES:


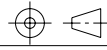
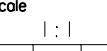
7. ALL HOLE DIAMETERS ARE FINISHED HOLE SIZE.

8. MOUNTING HOLES, WHERE APPLICABLE, ARE UNPLATED.

9. $\varnothing .0453 \pm .0010$ [1.151 \pm 0.025] DRILLED HOLES PLATED WITH
.0003 [0.008] MIN SnPb OVER .001 [0.03]
TO .003 [0.08] Cu PLATING TO ACHIEVE
 $\varnothing .040 \pm .003$ [1.02 \pm .07] HOLE.

10. "DIM XXX" TO BE DETERMINED BY THE CUSTOMER.

11. CONNECTOR KEEP-OUT ZONE.

mat'l code				SEE NOTE 2		tolerances unless otherwise specified		CUSTOMER		 www.fciconnect.com	
lfr	ecr no.	dr	date	linear	.XX \pm .01/0.X \pm 0.3		COPY			title	
D					.XXX \pm .005/0.XX \pm 0.13		projection			6P + 48S + 6P	
					.XXX \pm .0020/0.XXX \pm 0.051		INCH/MM			RIGHT ANGLE SOLDER HEADER	
				angles	0° \pm 2°		scale			product family	
				dr	T. BRUNGARD	05/07/03	1:1			PwrBlade	
				enrg	M. MOSTOLLER	05/07/03				code	
				chr	M. MOSTOLLER	05/07/03			size		213
				appd	M. MOSTOLLER	05/07/03			dwg no		sheet
sheet index		revision sheet								4 of 4	

cage code 22526

Pro/E

3

4