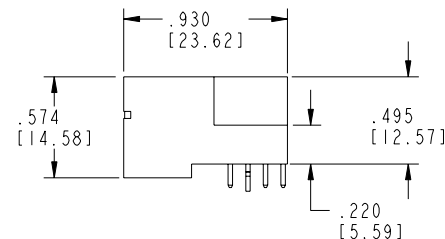


All rights strictly reserved. Reproduction or issue to third parties in any form whatever is not permitted without written authority from the proprietor. Property of FCI. Copyright FCI.

All rights reserved.  
form with  
Property

CODE	DIM "M" MATING LENGTH	CONTACT TYPE
E	.220 [5.59]	SIGNAL
R	.270 [6.86]	SIGNAL
S	.270 [6.86]	SIGNAL
T	.270 [6.86]	SIGNAL
U	.270 [6.86]	SIGNAL
PA	N/A [N/A]	POWER
HA	N/A [N/A]	HOLD-DOWN

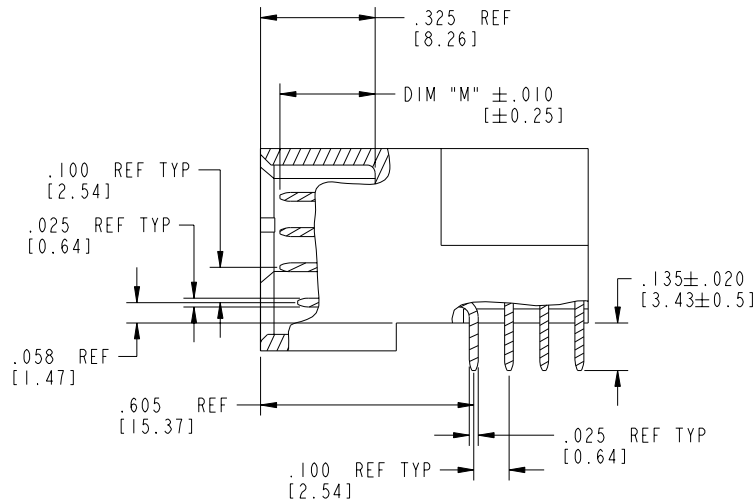


**PDM: Rev:D**      STATUS: **Released**      Printed: Aug 12, 2007.

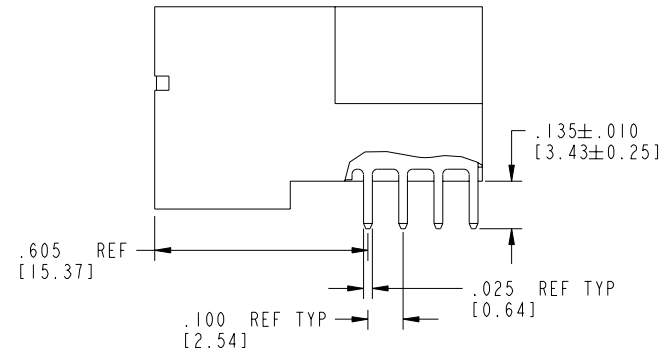
Tous droits strictement réservés. Reproduction ou communication à des tiers interdite sous quelque forme que ce soit sans autorisation écrite du propriétaire. Propriété de FCI. Droits de reproduction FCI.

All rights strictly reserved. Reproduction or issue to third parties in any form whatever is not permitted without written authority from the proprietor. Property of FCI. Copyright FCI.

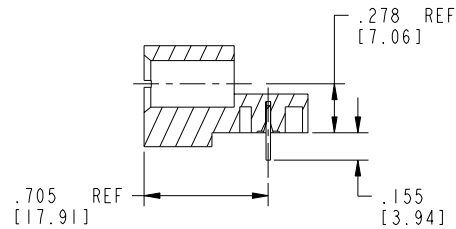
PRODUCT NUMBER  
51730-071--  
NOTE: 3



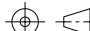
BROKEN-OUT SECTION A-A  
SCALE 2:1



BROKEN-OUT SECTION B-B  
SCALE 2:1



SECTION C-C

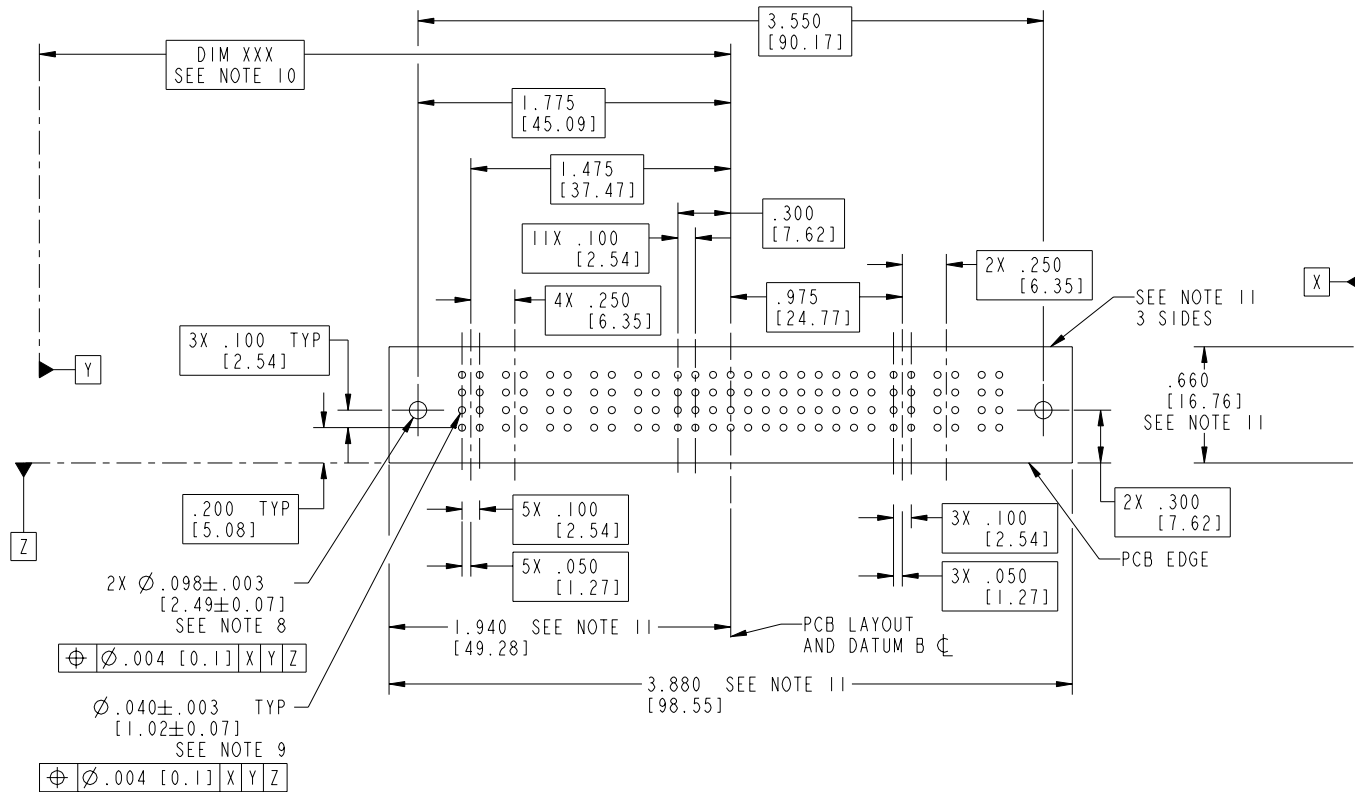
mat'l code				SEE NOTE 2		tolerances unless otherwise specified		CUSTOMER		<div><div>A</div><div>FCI</div><div>www.fciconnect.com</div></div>	
ltr	ecr no.	dr	date	linear	.XX±.01/0.X±0.3		COPY		<div>projection</div> <div></div>	title	
D					.XXX±.005/0.XX±0.13					5P + 48S + 3P	
					.XXX±.0020/0.XXX±0.051					RIGHT ANGLE SOLDER HEADF	
				angles	0°±2°		INCH/MM		<div>product family</div> <div>PwrBlade</div>	code	
				dr	T. BRUNGARD	02/04/03	<div>scale</div> <div>1:1</div>			213	
				engr	M. MOSTOLLER	02/04/03			size		dwg no
				chr	M. MOSTOLLER	02/04/03			A		51730-071
				appd	M. MOSTOLLER	02/04/03					sheet
sheet index		revision sheet									2 of 4
				Pro/E		3				cage code	
										22526	
										4	

Tous droits strictement réservés. Reproduction ou communication à des tiers interdite sous quelque forme que ce soit sans autorisation écrite du propriétaire. Propriété de c FCI. Droits de reproduction FCI.

**A**  
**FCI**

All rights strictly reserved. Reproduction or issue to third parties in any form whatever is not permitted without written authority from the proprietor. Property of FCI. Copyright FCI.

PRODUCT NUMBER  
51730-071--  
NOTE: 3



RECOMMENDED PCB LAYOUT

mat'l code				SEE NOTE 2		tolerances unless otherwise specified		CUSTOMER		<b>A</b> <b>FCI</b> www.fciconnect.com	
ltr	ecn no.	dr	date	linear	XX±.01/0.XX±0.3	projection		COPY		title	
D				linear	.XXX±.005/0.XX±0.13	projection		INCH/MM		5P + 48S + 3P	
				angles	.XXXX±.0020/0.XXX±0.051	projection		1:1		RIGHT ANGLE SOLDER HEADER	
				dr	T. BRUNGARD 02/04/03	projection		scale		product family	
				engr	M. MOSTOLLER 02/04/03	projection		1:1		PwrBlade	
				chr	M. MOSTOLLER 02/04/03	projection		1:1		code	
				appd	M. MOSTOLLER 02/04/03	projection		1:1		213	
sheet index		revision sheet				sheet		size		dwg no	
								A		51730-071	
										3 of 4	
										cage code	
										22526	

Tous droits strictement reserves. Reproduction ou communication a des tiers interdite sous quelque forme que ce soit sans autorisation écrite du propriétaire. Propriete de c FCI. Droits de reproduction FCI.

**A**  
**FCI**

All rights strictly reserved. Reproduction or issue to third parties in any form whatever is not permitted without written authority from the proprietor. Property of FCI. Copyright FCI.

A

B

1 | 2

3 |

4

# PRODUCT NUMBER

51730-071\_\_  
NOTE: 3

## NOTES:

1. DIMENSIONS AND TOLERANCES ARE IN ACCORDANCE WITH  
ASME Y14.5M, 1994 UNLESS OTHERWISE SPECIFIED.

## CONNECTOR NOTES:

2. HOUSING MATERIAL: UL 94 V-0 GLASS FILLED

HIGH-TEMP THERMOPLASTIC

POWER CONTACT MATERIAL: COPPER ALLOY

SIGNAL PIN MATERIAL: COPPER ALLOY

## 3. PLATING:

51730-071 Singal Pin:30u"/0.76um Au OVER 50u"/1.27um Ni ON THE CONTACT AREA.  
AND 100u"/2.54um SnPb PLATING OVER 50u"/1.27um Ni ON THE TERMINATION SECTION.  
Power Pin:30u"/0.76um Au OVER 50u"/1.27um Ni ON THE CONTACT AREA.  
AND 100u"/2.54um SnPb PLATING OVER 50u"/1.27um Ni ON THE TERMINATION SECTION.

51730-071LF Singal Pin:30u"/0.76um Au OVER 50u"/1.27um Ni ON THE CONTACT AREA.  
AND 78u"/2.00um Sn PLATING OVER 50u"/1.27um Ni ON THE TERMINATION SECTION.  
Power Pin:30u"/0.76um Au OVER 50u"/1.27um Ni ON THE CONTACT AREA.  
AND 78u"/2.00um Sn PLATING OVER 50u"/1.27um Ni ON THE TERMINATION SECTION.

PART NUMBER 51730-071LF MEETS EUROPEAN UNION DIRECTIVE AND OTHER COUNTRY REGULATIONS AS DESCRIBED IN GS-22-008.

THE HOUSING WILL WITHSTAND EXPOSURE TO 260° PEAK TEMPERATURE FOR 10 SECONDS IN A WAVE SOLDER APPLICATION WITH A CIRCUIT BOARD.

4. MANUFACTURER'S NAME, P/N, AND DATE CODE TO APPEAR ON  
THIS SURFACE.

5. PRODUCT SPECIFICATION GS-12-149.  
APPLICATION SPECIFICATION BUS-20-067.

6. PACKAGED IN TRAYS.

## PCB NOTES:

7. ALL HOLE DIAMETERS ARE FINISHED HOLE SIZE.

8. MOUNTING HOLES, WHERE APPLICABLE, ARE UNPLATED.

9.  $\varnothing.0453\pm.0010$  [1.151 $\pm$ 0.025] DRILLED HOLES PLATED WITH  
.0003 [0.008] MIN SnPb OVER .001 [0.03]  
TO .003 [0.08] Cu PLATING TO ACHIEVE  
 $\varnothing.040\pm.003$  [1.02 $\pm$ .07] HOLE.

10. "DIM XXX" TO BE DETERMINED BY THE CUSTOMER.

11. CONNECTOR KEEP-OUT ZONE.

mat'l code				SEE NOTE 2				tolerances unless otherwise specified				CUSTOMER				<b>A</b> <b>FCI</b> www.fciconnect.com			
ltr	ecn no.	dr	date	linear	.XX+ .01/0.X+0.3			COPY				projection				title			
D					.XXX+ .005/0.XX+0.13											5P + 48S + 3P			
				angles	XXXX+ .0020/0.XXX+0.051											RIGHT ANGLE SOLDER HEADER			
					0+2°														
				dr	T. BRUNGARD 02/04/03			INCH/MM				product family				PwrBlade			
				enrg	M. MOSTOLLER 02/04/03			scale				size				dwg no			
				chr	M. MOSTOLLER 02/04/03			1:1				A				51730-071			
				appd	M. MOSTOLLER 02/04/03														
sheet index		revision sheet																	

cage code 22526

4

Pro/E

3 |

PDM: Rev:D

STATUS:Released

Printed: Aug 12, 2007