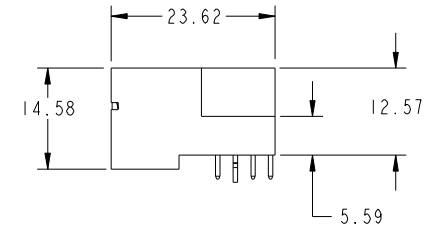
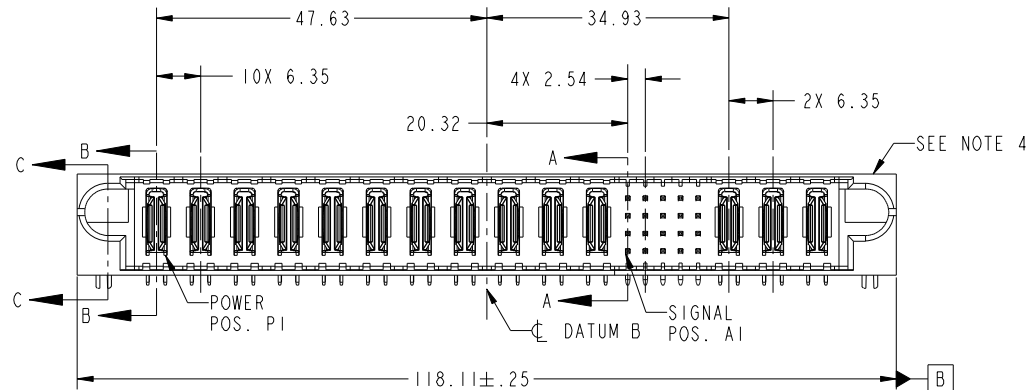


Tous droits strictement reserves. Reproduction ou communication a des tiers interdite sous quelque forme que ce soit sans autorisation écrite du propriétaire. Propriete de c FCI. Droits de reproduction FCI.



All rights strictly reserved. Reproduction or issue to third parties in any form whatever is not permitted without written authority from the proprietor. Property of FCI. Copyright FCI.

PRODUCT NO.	ROWS		POWER										SIGNAL					POWER						
		E1	P1	P2	P3	P4	P5	P6	P7	P8	P9	P10	P11	1	2	3	4	5	P12	P13	P14	E2		
51730-048-- NOTE: 3	D C B A		PA	PA	PA	PA	PA	PA	PA	PA	PA	PA	PA	H U U U U U T T T T T T S S S S S S R R R R R R E					PA	PA	PA			



CODE	DIM "M" MATING LENGTH	CONTACT TYPE
PA	[N/A]	POWER
HA	[N/A]	HOLD-DOWN
H	[5.59]	SIGNAL
T	[6.86]	SIGNAL
S	[6.86]	SIGNAL
R	[6.86]	SIGNAL
U	[6.86]	SIGNAL
E	[5.59]	SIGNAL

mat'l code				SEE NOTE		tolerances unless otherwise specified		CUSTOMER		FCI		www.fciconnect.com	
litr	ecn no.	dr	date					COPY		projection		title	
A	V20994	DAI	06/05/02	linear		0.X ± 0.5						3P + 20S + 11P	
B	V21034	DAI	06/11/02			0.XX ± 0.25						RIGHT ANGLE SOLDER HEADER	
C	DG05-0389	GvoJM	10/17/05	angles		0.XXX ± 0.10						product family	PwrBlade
D	DG07-0498	JW	09/15/08			0° ± 2°						code	213
				enrg		D. INGRAM	06/05/02					size	dwg no
				chr		M. MOSTOLLER	06/05/02					A	51730-048
				appd		M. MOSTOLLER	06/05/02					scale	1:1
sheet	revision	D	D	D	D								
index	sheet	1	2	3	4								

Pro/E

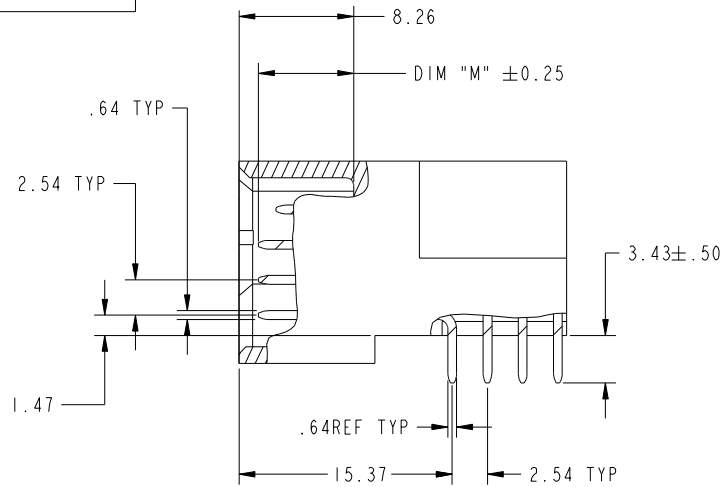
cage code 22526

Tous droits strictement reserves. Reproduction ou communication a des tiers interdite sous quelque forme que ce soit sans autorisation écrite du propriétaire. Propriete de c FCI. Droits de reproduction FCI.

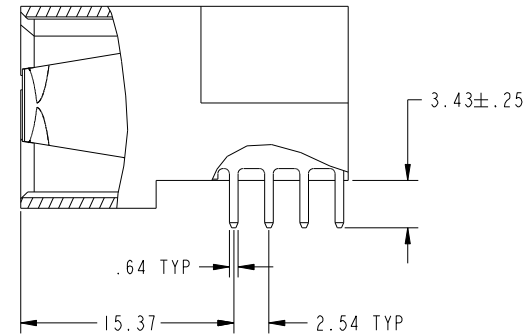


All rights strictly reserved. Reproduction or issue to third parties in any form whatever is not permitted without written authority from the proprietor. Property of FCI. Copyright FCI.

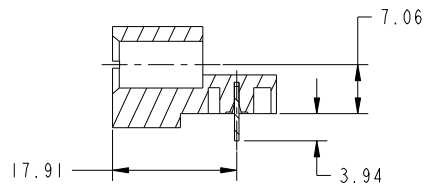
PRODUCT NUMBER
51730-048--
NOTE: 3



BROKEN-OUT SECTION A-A
SCALE 2:1



BROKEN-OUT SECTION B-B
SCALE 2:1



SECTION C-C

mat'l code				SEE NOTE		tolerances unless otherwise specified		CUSTOMER		FCI	
litr	ecn no.	dr	date			linear	0.X ±0.5	COPY		www.fciconnect.com	
D						angles	0.XX ±0.25	projection		title	
							0.XXX ±0.10			3P + 20S + 11P	
						dr	0° ±2°			RIGHT ANGLE SOLDER HEADER	
						enrg	D. INGRAM 06/05/02			product family PwrBlade	
						chr	M. MOSTOLLER 06/05/02			code	
						appd	M. MOSTOLLER 06/05/02			213	
sheet index		revision sheet						scale		size	
								1:1		dwg no	
										51730-048	
										sheet	
										2	
										cage code	
										22526	

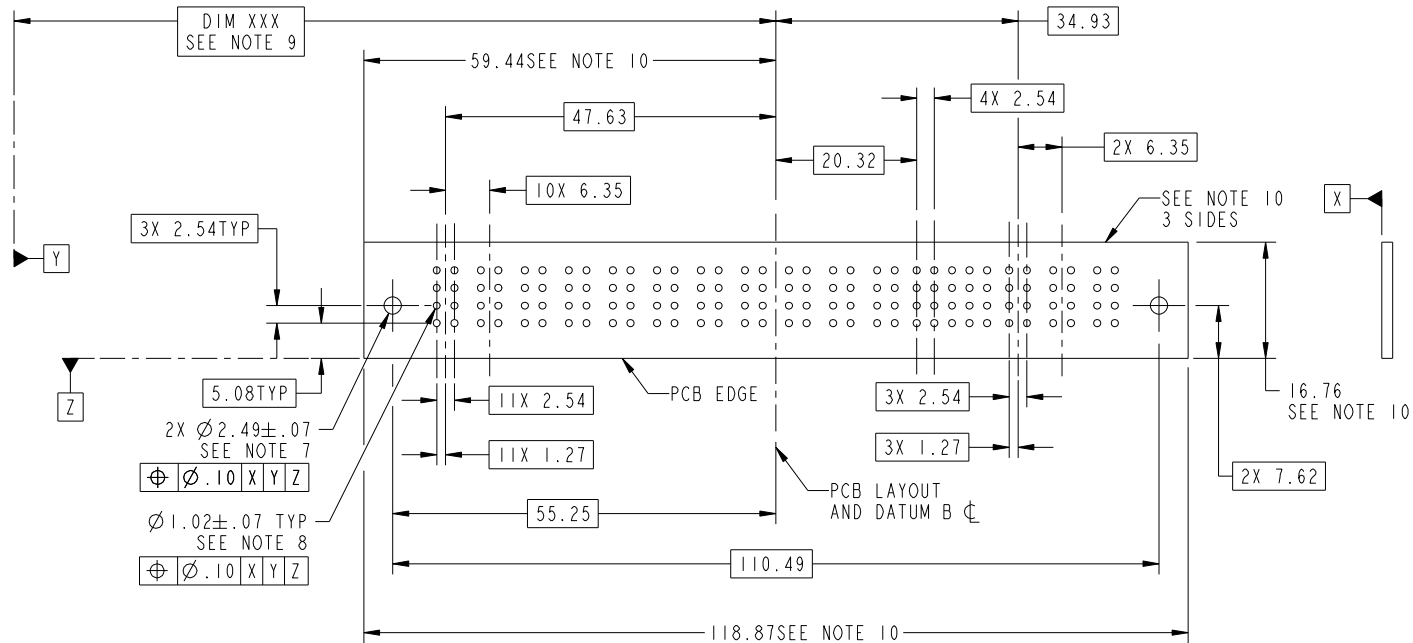
Pro/E

Tous droits strictement reserves. Reproduction ou communication a des tiers interdite sous quelque forme que ce soit sans autorisation écrite du propriétaire. Propriete de c FCI. Droits de reproduction FCI.



All rights strictly reserved. Reproduction or issue to third parties in any form whatever is not permitted without written authority from the proprietor. Property of FCI. Copyright FCI.

PRODUCT NUMBER
51730-048_-
NOTE: 3



RECOMMENDED PCB LAYOUT

mat'l code				SEE NOTE		tolerances unless otherwise specified		CUSTOMER		FCI	
litr	ecn no.	dr	date			linear	0.X ± 0.5	COPY		www.fciconnect.com	
D						angles	0.XX ± 0.25	projection		title	
							0.XXX ± 0.10			3P + 20S + 11P	
						dr	0° ± 2°			RIGHT ANGLE SOLDER HEADER	
						enrg	D. INGRAM 06/05/02			product family	PwrBlade
						chr	M. MOSTOLLER 06/05/02			size	213
						appd	M. MOSTOLLER 06/05/02			dwg no	51730-048
										sheet	3
sheet index	revision sheet										

Pro/E

cage code
22526

Tous droits strictement reserves. Reproduction ou communication a des tiers interdite sous quelque forme que ce soit sans autorisation écrite du propriétaire. Propriete de c FCI. Droits de reproduction FCI.



All rights strictly reserved. Reproduction or issue to third parties in any form whatever is not permitted without written authority from the proprietor. Property of FCI. Copyright FCI.

PRODUCT NUMBER
51730-048_- NOTE: 3

NOTES:

1. DIMENSIONS AND TOLERANCES ARE IN ACCORDANCE WITH ASME Y14.5M, 1994 UNLESS OTHERWISE SPECIFIED.

CONNECTOR NOTES:

2. HOUSING MATERIAL: UL 94 V-0 GLASS FILLED

HIGH-TEMP THERMOPLASTIC
POWER CONTACT MATERIAL: COPPER ALLOY
SIGNAL PIN MATERIAL: COPPER ALLOY

3. PLATING:

SEE ITEM 1 & 2 IN PRINT 10064183 FOR PLATING SPEC OF 51730-048; 51730-048LF PRESPECTIVELY

4. MANUFACTURER'S NAME, P/N, AND DATE CODE TO APPEAR ON THIS SURFACE.

5. PRODUCT SPECIFICATION GS-12-149.
APPLICATION SPECIFICATION BUS-20-067.

PCB NOTES:

6. ALL HOLE DIAMETERS ARE FINISHED HOLE SIZE.

7. MOUNTING HOLES, WHERE APPLICABLE, ARE UNPLATED.

8. $\varnothing 1.151 \pm 0.025$ DRILLED HOLES PLATED WITH
0.008 MIN SnPb OR Sn OVER 0.03
TO 0.08 Cu PLATING TO ACHIEVE
 $\varnothing 1.02 \pm .07$ HOLE.

9. "DIM XXX" TO BE DETERMINED BY THE CUSTOMER.

10. CONNECTOR KEEP-OUT ZONE.

11. A SYMBOL WILL BE NEXT TO ANY DIMENSION, VIEW, OR NOTE WHICH HAS BEEN MODIFIED WITH THE CURRENT DRAWING REVISION.

mat'l code				SEE NOTE		tolerances unless otherwise specified		CUSTOMER		FCI		www.fciconnect.com	
ltr	ecn no.	dr	date					COPY					
D				linear		$0.X \pm 0.5$		projection		title			
						$0.XX \pm 0.25$				3P + 20S + 11P			
				angles		$0.XXX \pm 0.10$				RIGHT ANGLE SOLDER HEADER			
				dr		$0^\circ \pm 2^\circ$							
				enrg		D. INGRAM 06/05/02		MIM		product family		PwrBlade	code
				chr		M. MOSTOLLER 06/05/02		scale		size	dwg no		213
				appd		M. MOSTOLLER 06/05/02		1:1		A	51730-048	sheet	4
sheet index	revision sheet												

cage code 22526