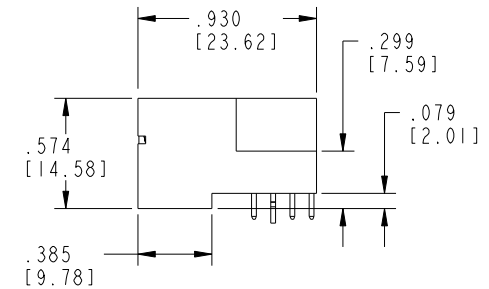
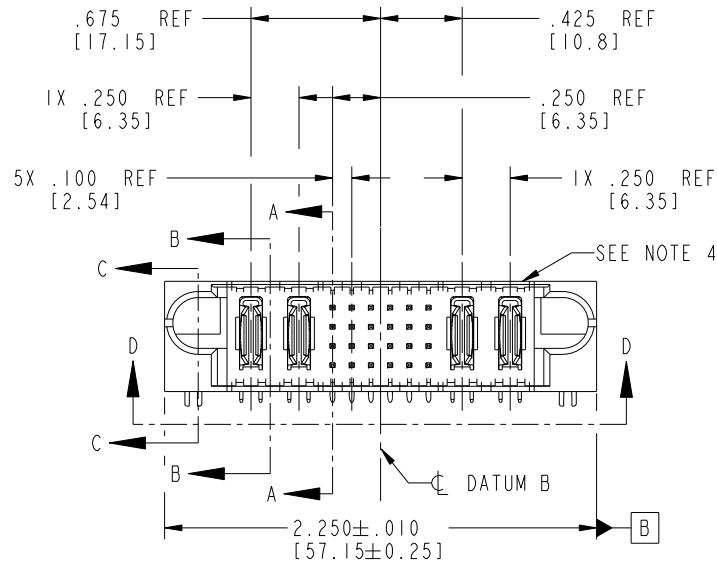




PRODUCT NO.	ROWS	POWER			SIGNAL						POWER		E2
		E1	P1	P2	1	2	3	4	5	6	P3	P4	
51730-016-- NOTE ③	D C B A		PA	PA	UUUUUU	TTTTTT	TTTTTT	TTTTTT	TTTTTT	TTTTTT	PA	PA	
		HA			SSSSSS	SSSSSS	SSSSSS	SSSSSS	SSSSSS	SSSSSS			HA



CODE	DIM "M" MATING LENGTH	CONTACT TYPE
G	.220 [5.59]	SIGNAL
R	.270 [6.86]	SIGNAL
S	.270 [6.86]	SIGNAL
T	.270 [6.86]	SIGNAL
U	.270 [6.86]	SIGNAL
PA	N/A [N/A]	POWER
HA	N/A [N/A]	HOLD-DOWN

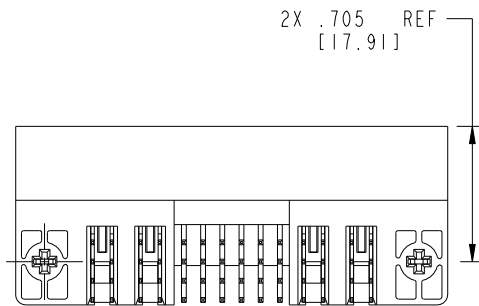
mat'l code				SEE NOTE 2		tolerances unless otherwise specified		CUSTOMER		FCI	
ltr	ecn no.	dr	date	linear	angles	.XX±.01/0.X±0.3	.XXX±.005/0.XX±0.13	COPY	projection	title	www.fciconnect.com
H	DG07-0498	JC	03/26/08			.XXX±.0020/0.XXX±0.051	0°±2°			2P + 24S + 2P	
J	DG08-0272	W D	09/25/08							RIGHT ANGLE SOLDER HEADER	
				dr	J. SHAFFER	01-22-02				product family	PwrBlade
				engr	M. MOSTOLLER	01-22-02				size	213
				chr	M. MOSTOLLER	01-22-02				dwg no	sheet
				appd	M. MOSTOLLER	01-22-02				A	1 of 4
sheet index	revision sheet	J	J	J	J			scale	1:1	51730-016	
		1	2	3	4						

Tous droits strictement reserves. Reproduction ou communication a des tiers interdite sous quelque forme que ce soit sans autorisation écrite du propriétaire. Propriete de c FCI. Droits de reproduction FCI.

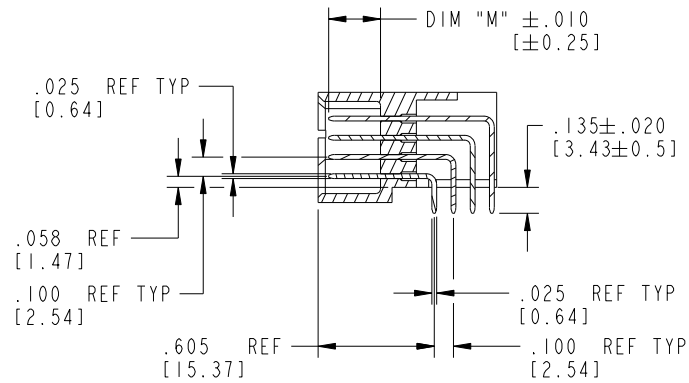


All rights strictly reserved. Reproduction or issue to third parties in any form whatever is not permitted without written authority from the proprietor. Property of FCI. Copyright FCI.

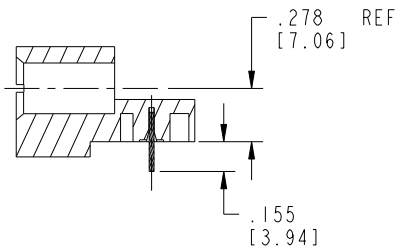
PRODUCT NUMBER  
51730-016\_\_  
NOTE ③



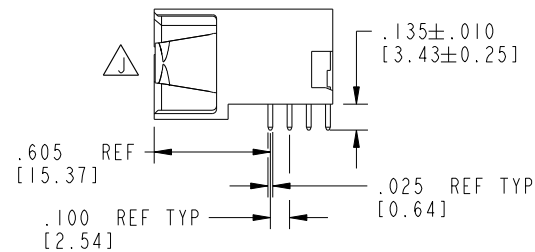
VIEW D-D




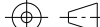

SECTION A-A



SECTION C-C



SECTION B-B

mat'l code				SEE NOTE 2		tolerances unless otherwise specified		CUSTOMER				www.fciconnect.com	
ltr	ecr no.	dr	date	linear	.XX±.01/0.X±0.3		COPY			title 2P + 24S + 2P RIGHT ANGLE SOLDER HEADER			
J					.XXX±.005/0.XX±0.13								
					.XXXX±.0020/0.XXX±0.051								
				angles	0°±2°					product family		PwrBlade	code
				dr	J. SHAFFER	01-22-02				size	dwg no	213	
				engr	M. MOSTOLLER	01-22-02				A	51730-016	sheet	
				chr	M. MOSTOLLER	01-22-02						2 of 4	
				appd	M. MOSTOLLER	01-22-02							
sheet index		revision sheet											

Pro/E

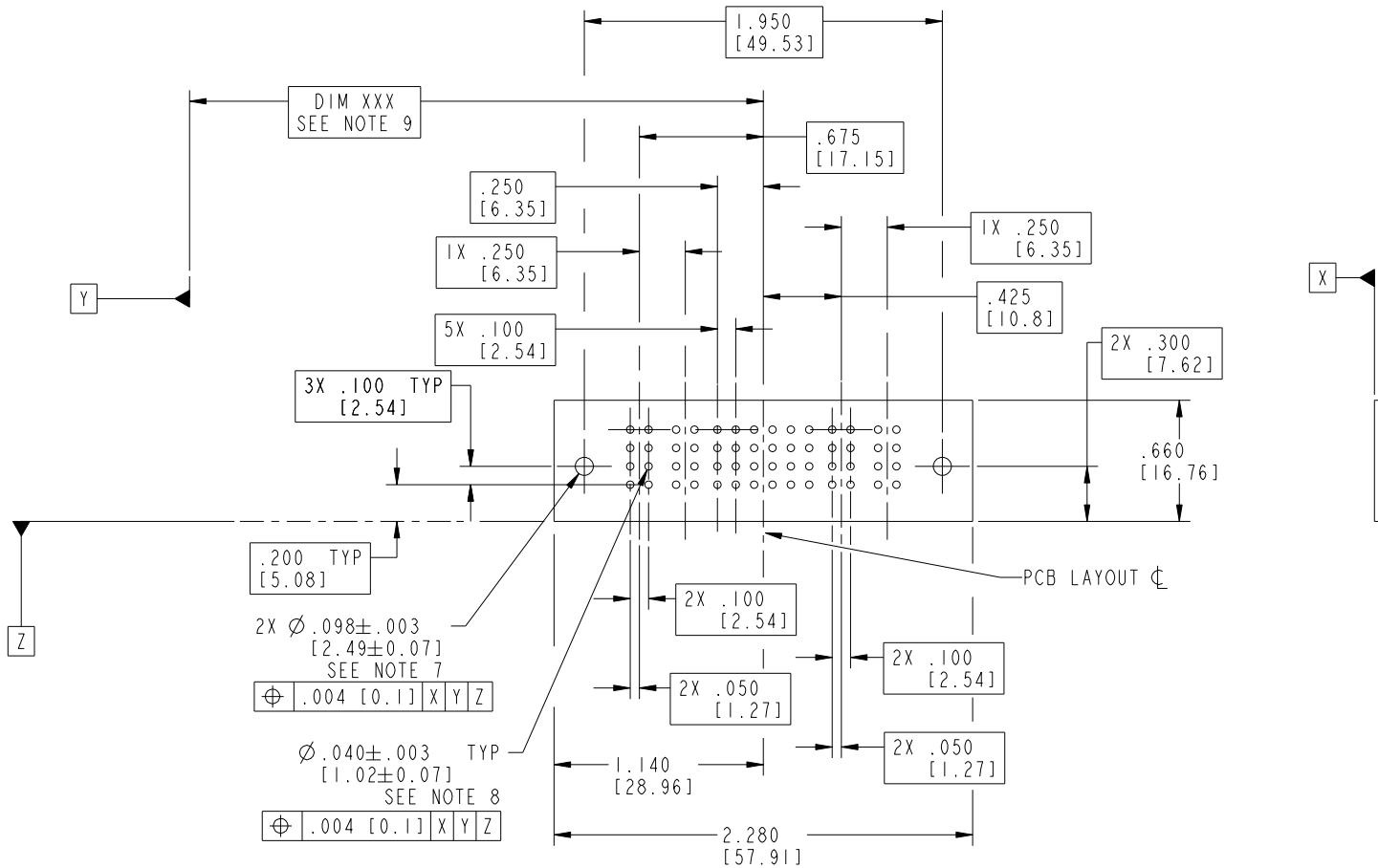
PDM: Rev:3

STATUS: Released

Printed: Oct 17, 2008



PRODUCT NUMBER  
51730-016--  
NOTE ③



RECOMMENDED PCB LAYOUT

mat'l code				SEE NOTE 2				tolerances unless otherwise specified				CUSTOMER			
ltr	ecn no.	dr	date	linear				.XX±.01/0.X±0.3				COPY			
J				angles				.XXX±.005/0.XX±0.13				projection			
								.XXX±.0020/0.XXX±0.051				INCH/MM			
				dr	J. SHAFFER	01-22-02		0°±2°				scale			
				engr	M. MOSTOLLER	01-22-02						1:1			
				chr	M. MOSTOLLER	01-22-02									
				appd	M. MOSTOLLER	01-22-02									
sheet index	revision	sheet													



www.fciconnect.com

title  
2P + 24S + 2P  
RIGHT ANGLE SOLDER HEADER

product family  
PwrBlade  
size  
dwg no  
A 51730-016  
code  
213  
sheet  
3 of 4

code code 22526

STATUS: Released Printed: Oct 17, 2008

Pro/E

PDM: Rev:3



1 | 2

3

4

PRODUCT NUMBER
51730-016__
NOTE ③

NOTES:

1. DIMENSIONS AND TOLERANCES ARE IN ACCORDANCE WITH ASME Y14.5M, 1994 UNLESS OTHERWISE SPECIFIED.

CONNECTORS NOTES:

② HOUSING MATERIAL: UL 94 V-0 GLASS FILLED HIGH TEMP THERMO PLASTIC  
POWER CONTACT MATERIAL: COPPER ALLOY  
SIGNAL PIN MATERIAL: COPPER ALLOY

③ SEE ITEM 1 & 2 IN PRINT 10064183 FOR PLATING SPEC OF 51730-016 AND 51730-016LF RESPECTIVELY.

4. "MANUFACTURER" NAME, P/N, AND DATE CODE TO APPEAR ON THIS SURFACE.

⑤ PRODUCT SPECIFICATION GS-12-149.

PCB - NOTES:



⑥ ALL HOLE DIAMETERS ARE FINISHED HOLE SIZE.

7. HOLD DOWN THROUGH HOLES ARE UNPLATED.

⑧  $\varnothing .0453 \pm 0.0010$  [1.151  $\pm 0.025$ ] DRILLED HOLES PLATED WITH 0.0003 [0.008] MIN SnPb OVER .001 [0.03] TO .003 [0.08] Cu PLATING TO ACHIEVE  $\varnothing .040 \pm .003$  [1.02  $\pm .07$ ] HOLE.

9. "DIM XXX" TO BE DETERMINED BY THE CUSTOMER.

10. A  $\triangle$  SYMBOL WILL BE NEXT TO ANY DIMENSION, VIEW, OR NOTE WHICH HAS BEEN MODIFIED WITH THE CURRENT DRAWING REVISION.

mat'l code				SEE NOTE 2				tolerances unless otherwise specified				CUSTOMER				 www.fciconnect.com																																																																																																																																																																																																																																																																																																																																																																																																																																																																																																																																																																																																																																																																																																																																																																																																																																																																																																																																																																																																																																																																																																																																																																																							
ltr	ecr no.	dr	date	linear	$.XX \pm .01 / 0.X \pm 0.3$				COPY				title 2P + 24S + 2P RIGHT ANGLE SOLDER HEADER				product family PwrBlade				code 213																																																																																																																																																																																																																																																																																																																																																																																																																																																																																																																																																																																																																																																																																																																																																																																																																																																																																																																																																																																																																																																																																																																																																																																		
J					$.XXX \pm .005 / 0.XX \pm 0.13$				projection																																																																																																																																																																																																																																																																																																																																																																																																																																																																																																																																																																																																																																																																																																																																																																																																																																																																																																																																																																																																																																																																																																																																																																																														
					$.XXXX \pm .0020 / 0.XXX \pm 0.051$				angles																																																																																																																																																																																																																																																																																																																																																																																																																																																																																																																																																																																																																																																																																																																																																																																																																																																																																																																																																																																																																																																																																																																																																																																														
					$0^\circ \pm 2^\circ$				dr				 INCH/MM				size				dwg no 51730-016				sheet 4 of 4																																																																																																																																																																																																																																																																																																																																																																																																																																																																																																																																																																																																																																																																																																																																																																																																																																																																																																																																																																																																																																																																																																																																																																														
					J. SHAFFER 01-22-02				enrg																																																																																																																																																																																																																																																																																																																																																																																																																																																																																																																																																																																																																																																																																																																																																																																																																																																																																																																																																																																																																																																																																																																																																																																														
					M. MOSTOLLER 01-22-02				chr																																																																																																																																																																																																																																																																																																																																																																																																																																																																																																																																																																																																																																																																																																																																																																																																																																																																																																																																																																																																																																																																																																																																																																																														
					M. MOSTOLLER 01-22-02				appd				scale				A																																																																																																																																																																																																																																																																																																																																																																																																																																																																																																																																																																																																																																																																																																																																																																																																																																																																																																																																																																																																																																																																																																																																																																																						
sheet index		revision sheet																																																																																																																																																																																																																																																																																																																																																																																																																																																																																																																																																																																																																																																																																																																																																																																																																																																																																																																																																																																																																																																																																																																																																																																																					</

A

A

B

B

1 | 2

Pro/E

PDM: Rev:3

STATUS: Released

Printed: Oct 17, 2008