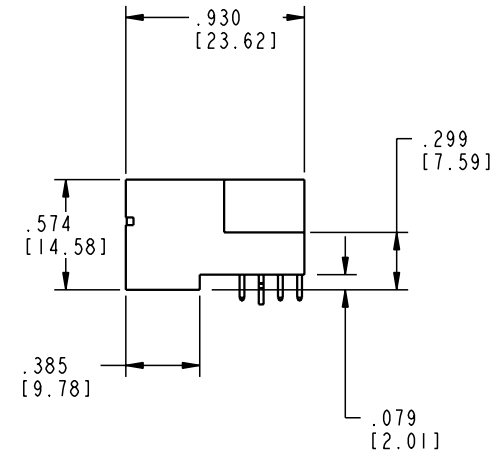
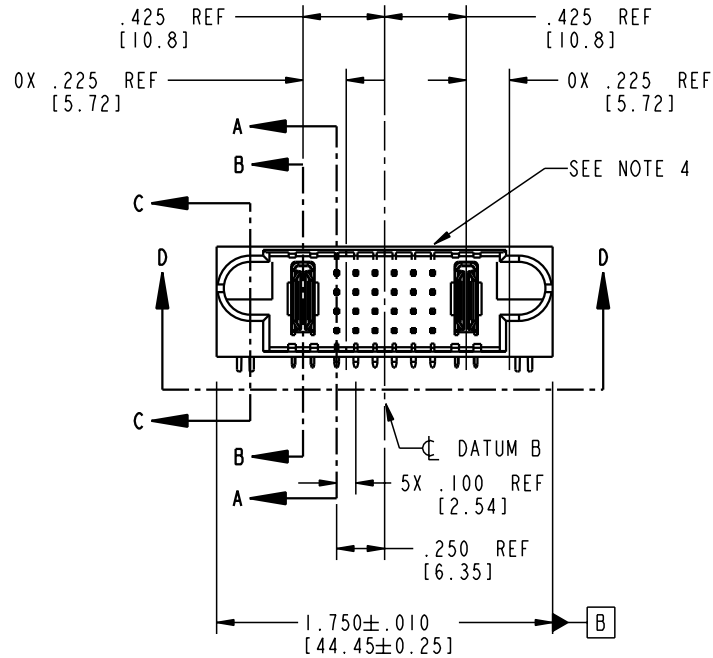
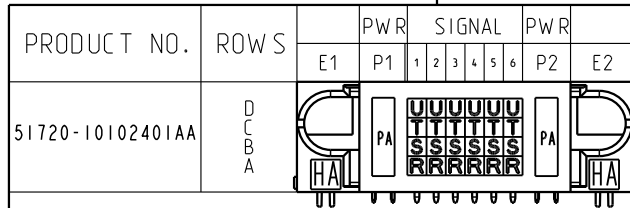


Tous droits strictement reserves. Reproduction ou communication a des tiers interdite sous quelque forme que ce soit sans autorisation écrite du propriétaire. Propriete de c FCI. Droits de reproduction FCI.



All rights strictly reserved. Reproduction or issue to third parties in any form whatever is not permitted without written authority from the proprietor. Property of FCI. Copyright FCI.



CODE	DIM "M"	MATING	LENGTH	CONTACT	TYPE
R	.270	[6.86]		SIGNAL	
S	.270	[6.86]		SIGNAL	
T	.270	[6.86]		SIGNAL	
U	.270	[6.86]		SIGNAL	
PA	N/A	[N/A]		POWER	
HA	N/A	[N/A]		HOLD-DOWN	

mat'l code				SEE NOTE 2		tolerances unless otherwise specified		CUSTOMER		FCI ELECTRONICS	
ltr	ecr no.	dr	date	linear	linear	.XX ± .01/0.X ± 0.3	projection	COPY	title	product family	code
A	V11524	JWS	5/2/01			.XXX ± .005/0.XX ± 0.13			IP + 24S + IP	PwrBlade	213
B	V12844	DAI	12/27/01	angles	angles	.XXX ± .0020/0.XX ± 0.051			RIGHT ANGLE SOLDER HEADER	size	sheet
				dr	J. SHAFFER	5/2/01	INCH/MM	scale	A	51720-10102401AA	1 of 4
				enr	J. ALLISON	5/2/01					
				chr	J. ALLISON	5/2/01					
				appd	J. ALLISON	5/2/01					
sheet index	revision	B	B	B	B						
	sheet	1	2	3	4						

Pro/E

3

cage code 22526

4

PDM: Rev:B

STATUS: Released

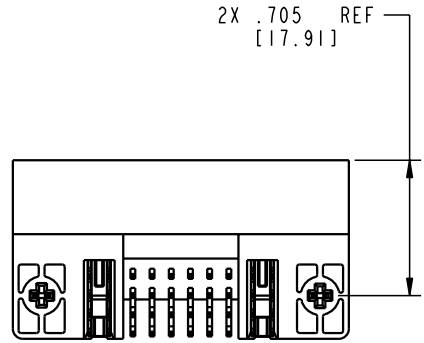
Printed: Aug 12, 2007

Tous droits strictement reserves. Reproduction ou communication a des tiers interdite sous quelque forme que ce soit sans autorisation écrite du propriétaire. Propriete de c FCI. Droits de reproduction FCI.

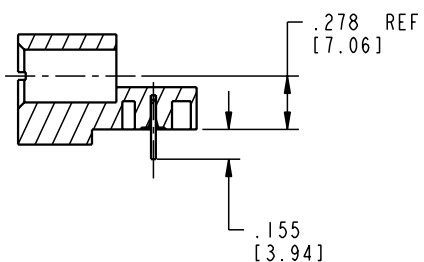


All rights strictly reserved. Reproduction or issue to third parties in any form whatever is not permitted without written authority from the proprietor. Property of FCI. Copyright FCI.

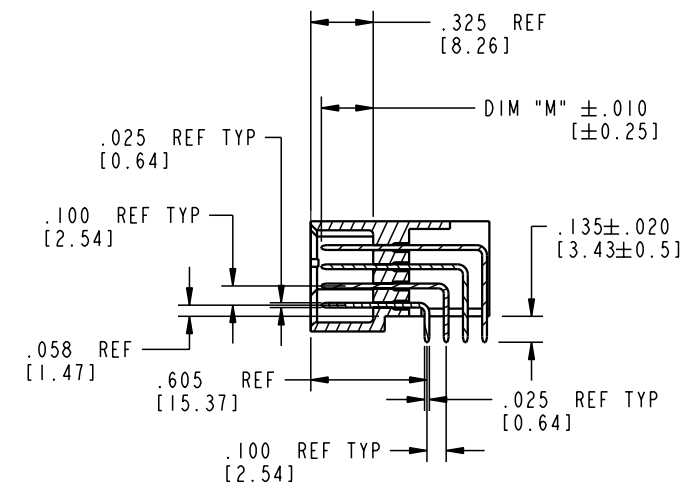
PRODUCT NUMBER  
51720-1010240AA



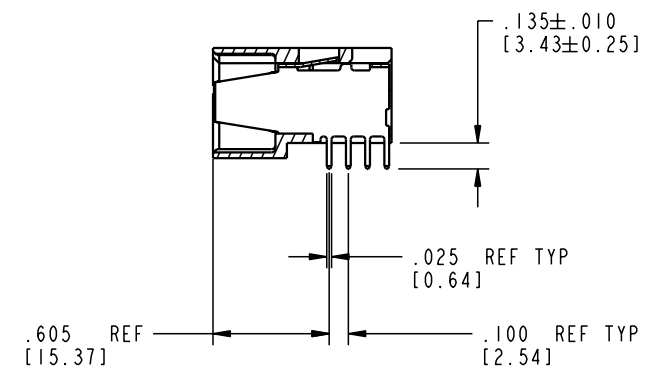
SECTION D-D



SECTION C-C



SECTION A-A



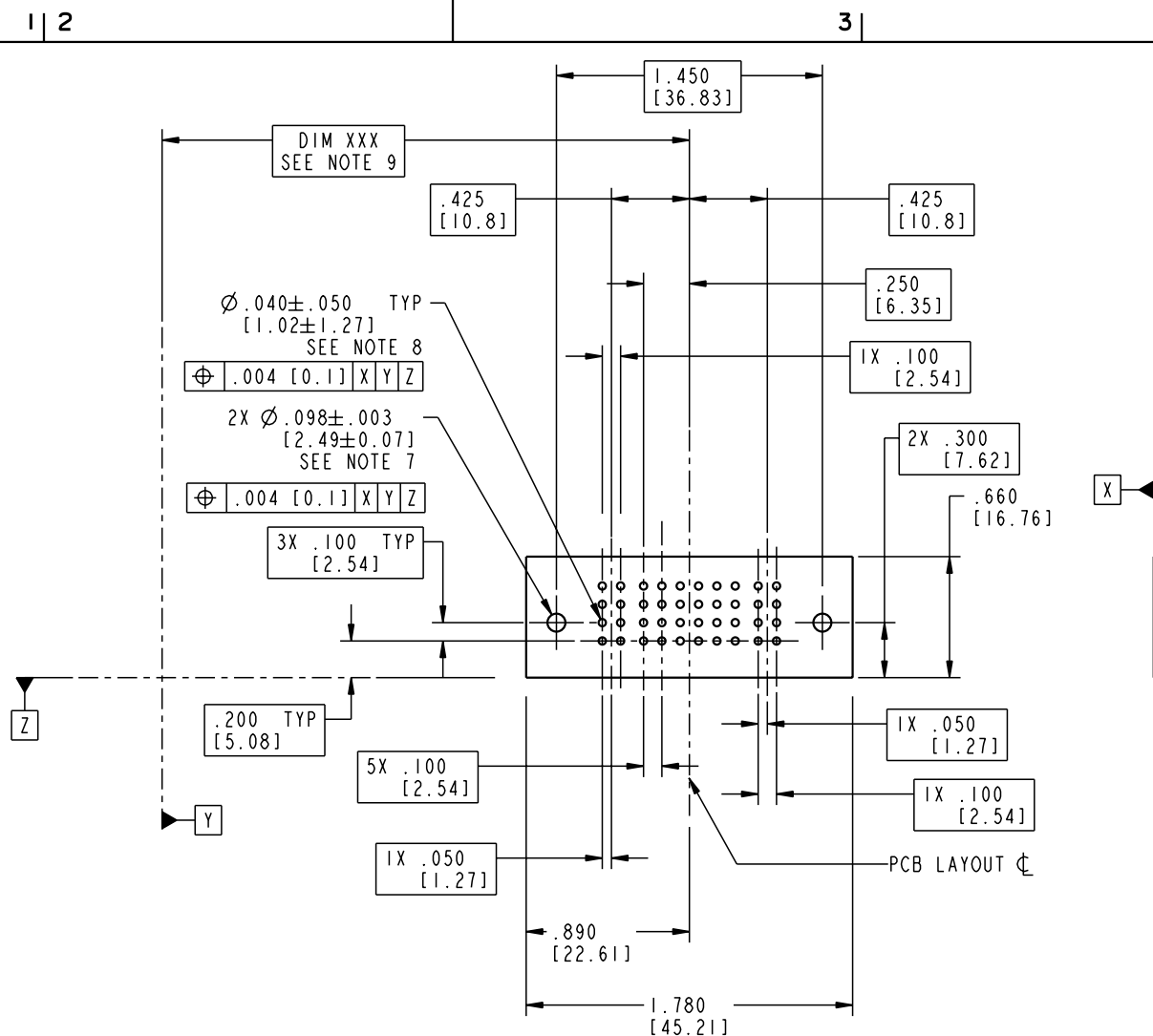
SECTION B-B

mat'l code				SEE NOTE 2		tolerances unless otherwise specified		CUSTOMER		<b>ELECTRONICS</b> <a href="http://www.fciconnect.com">www.fciconnect.com</a>	
lfr	ecn no.	dr	date					COPY			
B				linear		.XX±.01/0.X±0.3		projection		title	IP + 24S + IP
						.XXX±.005/0.XX±0.13				RIGHT ANGLE SOLDER HEADER	
				angles		.XXX±.0020/0.XX±0.051				product family	PwrBlade
				dr	J. SHAFFER	5/2/01		INCH/MM		size	213
				enr	J. ALLISON	5/2/01		scale		dwg no	2 of 4
				chr	J. ALLISON	5/2/01		1:1		A 51720-10102401AA	
				appd	J. ALLISON	5/2/01					
sheet index	revision sheet										

cage code 22526

Pro/E

PRODUCT NUMBER
51720-1010240AA



## RECOMMENDED PCB LAYOUT

[illegible]

cage code	22526
-----------	-------

Pro/E

3

4

**PDM: Rev:B**

STATUS: **Released**

Printed: Aug 12, 2007

PRODUCT NUMBER  
51720-1010240AA

NOTES:

1. DIMENSIONS AND TOLERANCES ARE IN ACCORDANCE WITH ASME Y14.5M, 1994 UNLESS OTHERWISE SPECIFIED.

CONNECTORS NOTES:

② HOUSING MATERIAL: UL 94 V-0 GLASS FILLED  
HIGH TEMP THERMO PLASTIC  
POWER CONTACT MATERIAL: COPPER ALLOY  
SIGNAL PIN MATERIAL: COPPER ALLOY

3. PLATING:

SIGNAL PINS: 30u"/0.76um Au OVER 50u"/1.27um Ni  
POWER CONTACTS: 50u"/1.27um Ni UNDER ALL  
WITH 30u"/0.76um Au ON CONTACT AREA  
AND SnPb ON PCB INTERFACE

④ "MANUFACTURER" NAME, P/N, AND DATE CODE TO APPEAR ON THIS SURFACE.

5. PRODUCT SPECIFICATION GS-12-149.

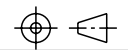
PCB - NOTES:

6. ALL HOLE DIAMETERS ARE FINISHED HOLE SIZE.

⑦ HOLD DOWN THROUGH HOLES ARE UNPLATED.

⑧  $\varnothing .0453 \pm 0.0010$  [1.151  $\pm$  0.025] DRILLED HOLES PLATED WITH  
0.0003 [0.008] MIN SnPb OVER .001 [0.03]  
TO .003 [0.08] Cu PLATING TO ACHIEVE  
 $\varnothing .040 \pm .003$  [1.02  $\pm$  .07] HOLE.

⑨ "DIM XXX" TO BE DETERMINED BY THE CUSTOMER.

mat'l code				SEE NOTE 2		tolerances unless otherwise specified		CUSTOMER		<b>FCI</b> <b>ELECTRONICS</b>	
ltr	ecn no.	dr	date					COPY		www.fciconnect.com	
B				linear		.XX $\pm$ .01/0.X $\pm$ 0.3		projection		title	IP + 24S + IP
						.XXX $\pm$ .005/0.XX $\pm$ 0.13					RIGHT ANGLE SOLDER HEADER
				angles		.XXX $\pm$ .0020/0.XXX $\pm$ 0.051				product family	PwrBlade
				dr	J. SHAFFER	5/2/01		INCH/MM		code	213
				enr	J. ALLISON	5/2/01		scale		size	4 of 4
				chr	J. ALLISON	5/2/01		1:1		dwg no	
				appd	J. ALLISON	5/2/01				A	51720-10102401AA
sheet index	revision sheet										

Pro/E

3

cage code 22526

4