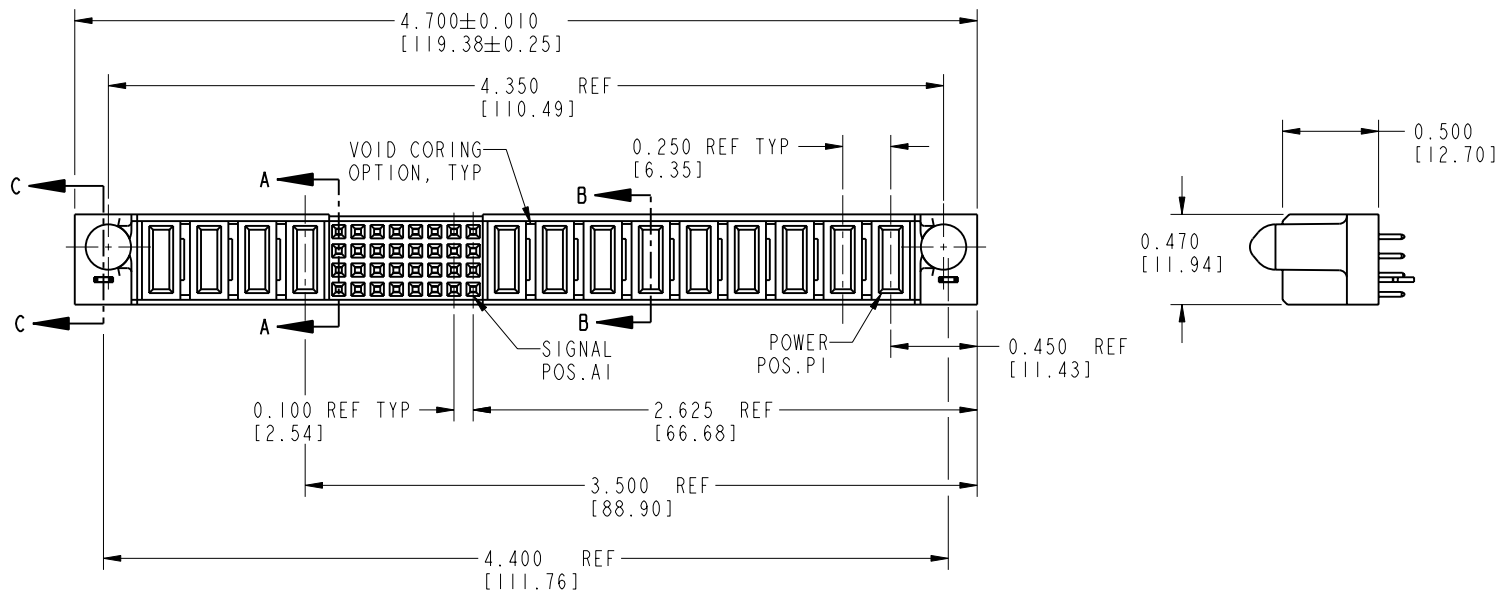
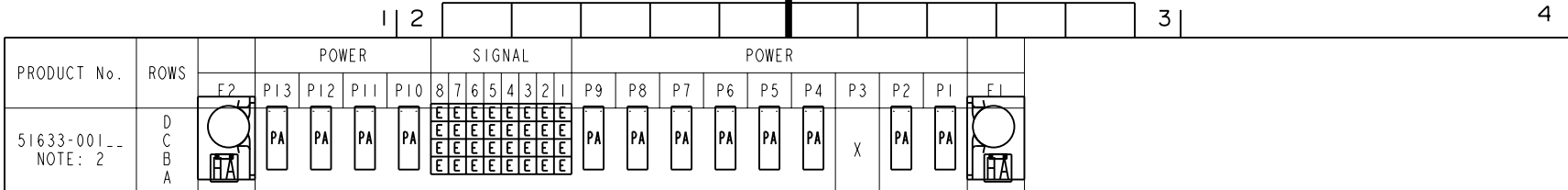


Tous droits strictement reserves. Reproduction ou communication a des tiers interdite sous quelque forme que ce soit sans autorisation écrite du propriétaire. Propriété de c FCI. Droits de reproduction FCI.

FCI

All rights strictly reserved. Reproduction or issue to third parties in any form whatever is not permitted without written authority from the proprietor. Property of FCI. Copyright FCI.



CODE	CONTACT TYPE
E	SIGNAL
PA	POWER
HA	HOLD-DOWN
X	OMITTED

mat'l code				NOTE 1		tolerances unless otherwise specified		CUSTOMER COPY		A FCI www.fciconnect.com	
lfr	ecn no.	dr	date	linear	.XX±.01/.X±.3	projection				title 9P + 32S + 4P VERTICAL SOLDER RECEPTACLE	
H	DG05-0375	GuoJM	10/07/05	angles	.XXX±.005/.XX±.13 .XXX±.0020/.XXX±.050 0°±2°	dr	C. BAROT 03/08/99				
				enqr	J. BROWN 03/08/99	INCH / MM		scale 1:1		product family PwrBlade code 213 size dwg no 51633 SHEET 1 OF 3	
				chr	J. BROWN 03/08/99						
				appd	J. BROWN 03/08/99			A		cage code 22526	
sheet index	revision sheet	H 1	H 2	H 3							

Tous droits strictement réservés. Reproduction ou communication o des liers interdite sous quelque forme que ce soit sans autorisation écrite du propriétaire. Propriété de c FCI. Droits de reproduction FCI.

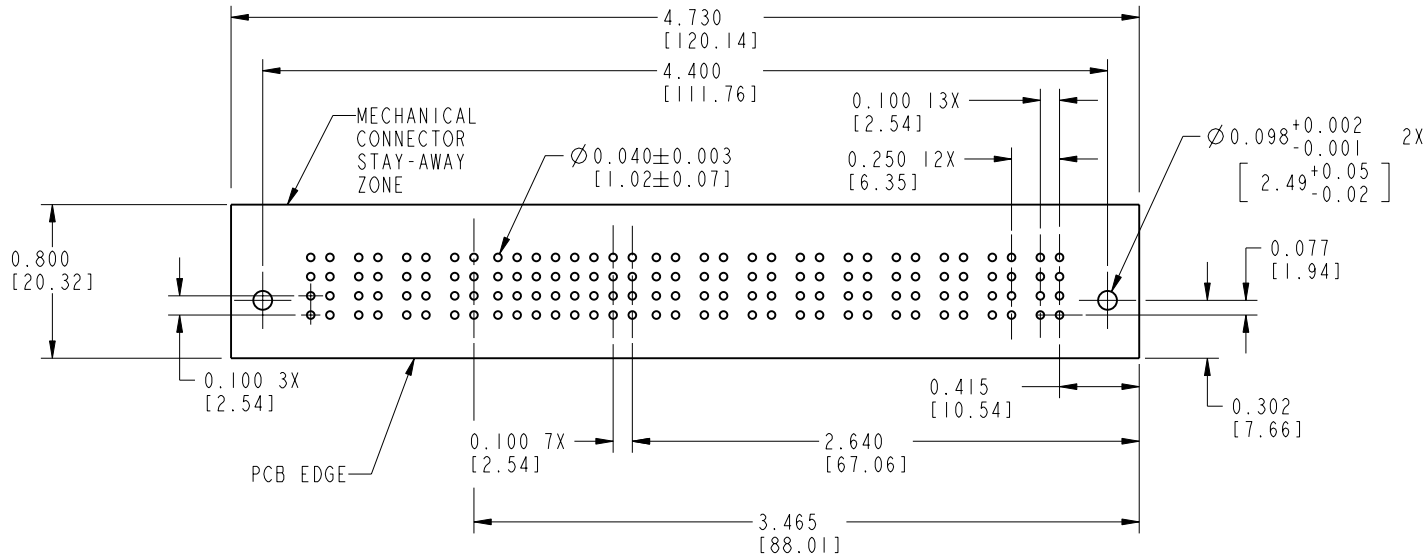
**FCI**

All rights strictly reserved. Reproduction or issue to third parties in any form without written authority from the proprietor. Property of FCI. Copyright FCI.

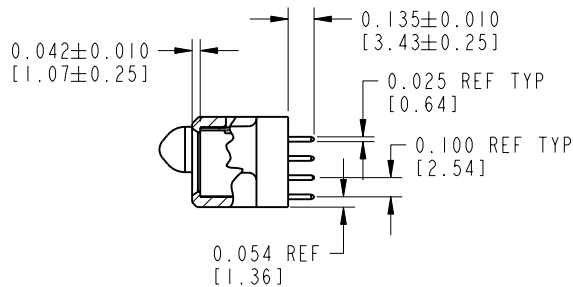
PRODUCT NUMBER

51633-001--

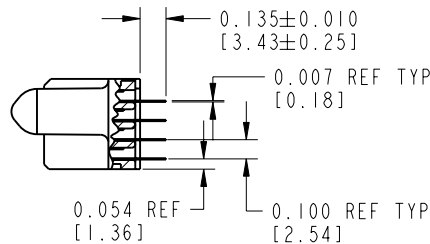
NOTE: 2



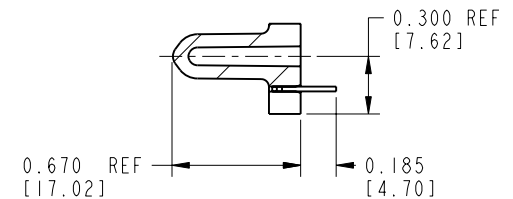
RECOMMENDED PCB LAYOUT



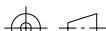
SECTION B-B



SECTION A-A



SECTION C-C

mat'l code				tolerances unless otherwise specified				CUSTOMER COPY		<div><div>A</div><div>FCI</div></div> <div>www.fciconnect.com</div>		
lfr	ecn no.	dr	date	linear	.XX±.01/.XX±.3			projection 	title 9P + 32S + 4P VERTICAL SOLDER RECEPTACLE			
H			.XXX±.005/.XX±.13									
			.XXXX±.0020/.XXX±.050									
				angles	0°±2°			<div>INCH / MM</div> <div>scale 1:1</div>	product family		PwrBlade	code
			dr	C. BAROT	03/08/99		size		dwg no	51633	213	
			engr	J. BROWN	03/08/99							
			chr	J. BROWN	03/08/99							
			appd	J. BROWN	03/08/99		A	SHEET 2				
sheet index		revision sheet										

Tous droits strictement reserves. Reproduction ou communication a des tiers interdite sous quelque forme que ce soit sans autorisation écrite du propriétaire. Propriete de c FCI. Droits de reproduction FCI.

All rights strictly reserved. Reproduction or issue to third parties in any form whatever is not permitted without written authority from the proprietor. Property of FCI. Copyright FCI.

A  
FCI

PRODUCT NUMBER		51633-001--		NOTE: 2	
CONNECTOR NOTES:					
1. HOUSING MATERIAL: GLASS FILLED HIGH TEMP THERMOPLASTIC, UL94 V-0 SIGNAL CONTACT MATERIAL: COPPER ALLOY POWER CONTACT MATERIAL: COPPER ALLOY					
2. PLATING:					
51633-001 Singal Pin: 30u"/0.76um Au OVER 50u"/1.27um Ni ON THE CONTACT AREA, AND 100u"/2.54um SnPb PLATING OVER 50u"/1.27um Ni ON THE TERMINATION SECTION. Power Pin: 30u"/0.76um Au OVER 50u"/1.27um Ni ON THE CONTACT AREA, AND 100u"/2.54um SnPb PLATING OVER 50u"/1.27um Ni ON THE TERMINATION SECTION.					
51633-001LF Singal Pin: 30u"/0.76um Au OVER 50u"/1.27um Ni ON THE CONTACT AREA, AND 78u"/2.00um Sn PLATING OVER 50u"/1.27um Ni ON THE TERMINATION SECTION. Power Pin: 30u"/0.76um Au OVER 50u"/1.27um Ni ON THE CONTACT AREA, AND 78u"/2.00um Sn PLATING OVER 50u"/1.27um Ni ON THE TERMINATION SECTION.					
PART NUMBER 51633-001LF MEETS EUROPEAN UNION DIRECTIVE AND OTHER COUNTRY REGULATIONS AS DESCRIBED IN GS-22-008.					
THE HOUSING WILL WITHSTAND EXPOSURE TO 260° PEAK TEMPERATURE FOR 10 SECONDS IN A WAVE SOLDER APPLICATION WITH A CIRCUIT BOARD.					
3. MANUFACTURER NAME, P/N, AND DATE CODE TO APPEAR ON THIS SURFACE.					
PCB NOTES:					
4. ALL DIMENSIONS ARE BASIC UNLESS OTHERWISE SPECIFIED.					
5. ALL THROUGH HOLES ARE LOCATED WITH A TRUE POSITION OF 0.004 [0.10]					
6. ALL HOLE DIAMETERS ARE FINISHED HOLE SIZE					
7. Ø0.098 [2.49] THROUGH HOLES ARE UNPLATED					
8. Ø0.0453±0.0010 [1.151±0.025] DRILLED HOLES PLATED WITH 0.0003 [0.008] MIN SnPb OVER 0.001 [0.03] TO 0.003 [0.08] Cu PLATING TO ACHIEVE A Ø0.040±0.003 [1.02±0.07] HOLE.					
mat'l code		tolerances unless otherwise specified		CUSTOMER	
lfr	ecn no.	dr	date	COPY	
H				projection	
				INCH / MM	
				scale 1:1	
				product family PWRBLADE	
				size dwg no 51633	
				code 213	
				SHEET 3	
sheet index	revision sheet				
form no. 7530-001-103		2		3	
				cage code 22526	
				4	