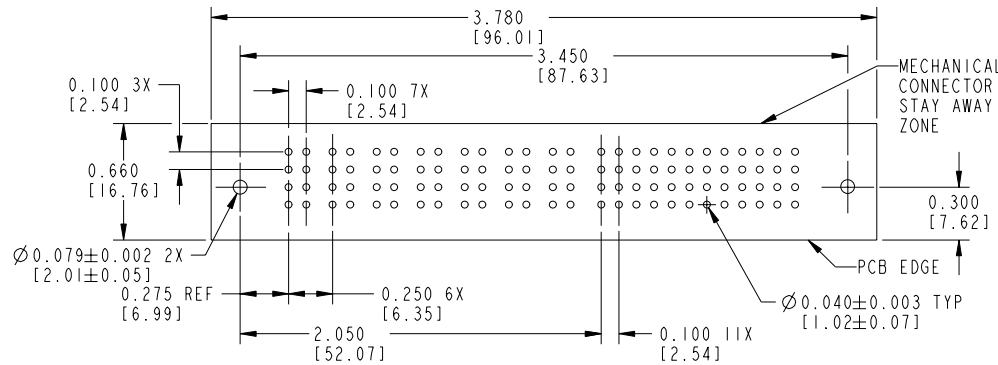
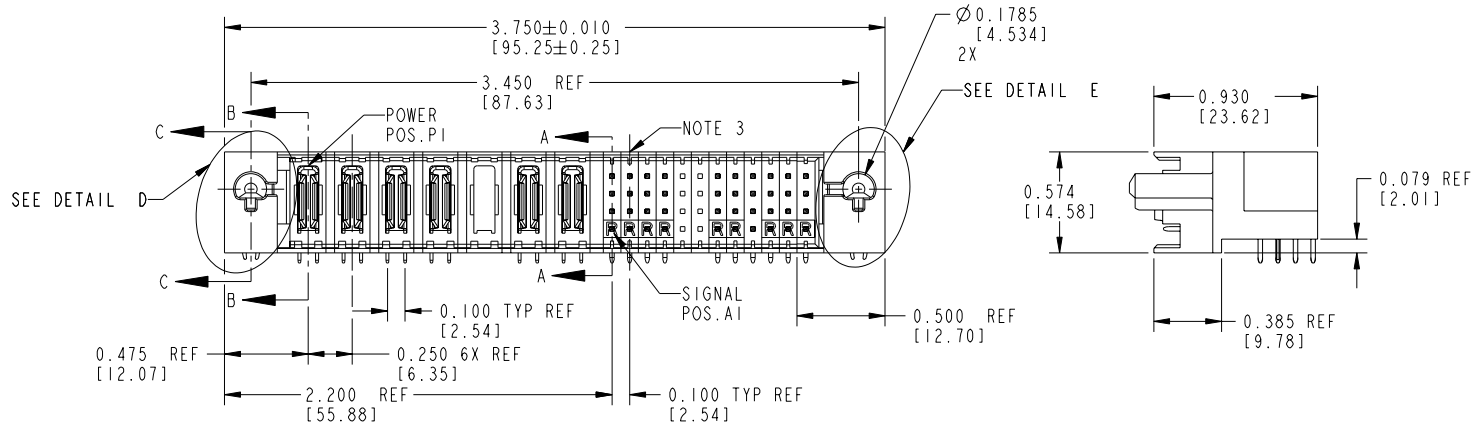


Tous droits strictement réservés. Reproduction ou communication à des tiers interdite sous quelque forme que ce soit sans autorisation écrite du propriétaire. Propriété de c FCI. Droits de reproduction FCI.

All rights strictly reserved. Reproduction or issue to third parties in any form whatever is not permitted without written authority from the proprietor. Property of FCI. Copyright FCI.

PRODUCT No.	ROWS	POWER								SIGNAL												E2
		E1	P1	P2	P3	P4	P5	P6	P7	1	2	3	4	5	6	7	8	9	10	11	12	
51601-XX001-- NOTE: 2	D C B A		PA	PA	PA	PA	X	PA	PA	UUUU	XX	UUUU	XX	UUUU	XX	UUUU	XX	UUUU	XX	UUUU	XX	
										SSSS	XX	SSSS	XX	SSSS	XX	SSSS	XX	SSSS	XX	SSSS	XX	
										RRRR	XX	RRRR	XX	RRRR	XX	RRRR	XX	RRRR	XX	RRRR	XX	



RECOMMENDED PCB LAYOUT

ITEM NO.	DIM "M" ±0.10 [0.25]	CONTACT TYPE
E	0.220 [5.59]	SIGNAL
H	0.220 [5.59]	SIGNAL
R	0.270 [6.86]	SIGNAL
S	0.270 [6.86]	SIGNAL
T	0.270 [6.86]	SIGNAL
U	0.270 [6.86]	SIGNAL
PA	N/A [N/A]	POWER
HA	N/A [N/A]	HOLD-DOWN

mat'l code				NOTE 1		tolerances unless otherwise specified		CUSTOMER COPY		A FCI www.fciconnect.com	
ltr	ecn no.	dr	date	linear	.XX±.01/.X±.3	projection	title	7P + 48S	RIGHT ANGLE SOLDER HEADER	product family	PWRBLADE
A	V81897	DLW	10-30-98	linear	.XXX±.005/.X±.13	INCH / MM	size	dwg no	51601	code	213
B	V90098	DLW	01-22-99	linear	.XXX±.0020/.XXX±.051	scale	1:1			SHEET	1 OF 3
C	V94311	EKK	01-28-00	angles	0°±2°						
D	V02755	EKK	12-04-00	dr	D. WOLFORD 10-30-98						
E	V12846	DAI	12-31-01	engr	J. BROWN 10-30-98						
F	DG05-0363	GuoJM	09/29/05	chr	J. BROWN 10-30-98						
G	DG06-0011	CS	01/09/06	appd	J. BROWN 10-30-98						
sheet index	revision	G	G	G							
sheet	index	1	2	3							

form no. 7530-001-103

cage code 22526

PDM: Rev:G

STATUS: Released

Printed: Jul 24, 2008

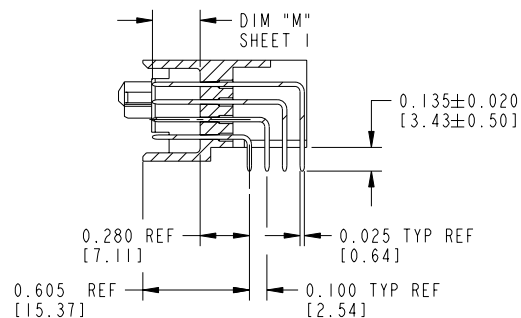
Tous droits strictement réservés. Reproduction ou communication à des tiers interdite sous quelque forme que ce soit sans autorisation écrite du propriétaire. Propriété de FCI. Droits de reproduction FCI.

All rights strictly reserved. Reproduction or issue to third parties in any form whatever is not permitted without written authority from the proprietor. Property of FCI. Copyright FCI.

PRODUCT NUMBER

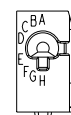
51601-XX001--

NOTE: 2

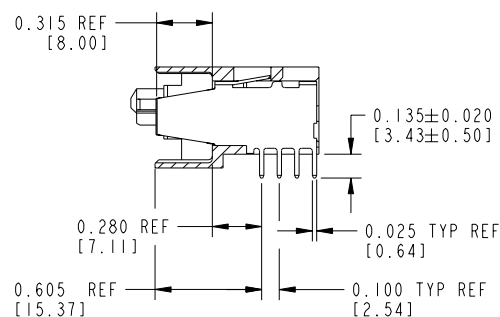
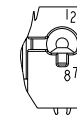


SECTION A-A

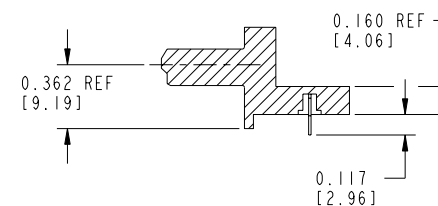
DETAIL D
SCALE 1:1
CODE H SHOWN



DETAIL E
SCALE 1:1
CODE 8 SHOWN



SECTION B-B



SECTION C-C

mat'l code				NOTE 1		tolerances unless otherwise specified		CUSTOMER		A FCI		www.fciconnect.com	
ltr	ecr no.	dr	date	linear		.XX±.01/.X±.3		projection	COPY	title	7P + 48S RIGHT ANGLE SOLDER HEADER	product family	code
G						.XXX±.005/.X±.13							
				angles		.XXX±.0020/.XXX±.051		INCH / MM	scale	size	dwg no	product family	code
						0°±2°							
				dr	D. WOLFORD	10-30-98		1:1	A	51601	213 SHEET 2	PWRBLADE	2
				enr	J. BROWN	10-30-98							
				chr	J. BROWN	10-30-98							
				appd	J. BROWN	10-30-98							
sheet index	revision sheet												

form no. 7530-001-103

cage code 22526

PDM: Rev:G

STATUS: Released

Printed: Jul 24, 2008

Tous droits strictement reserves. Reproduction ou communication a des tiers
interdite sous quelque forme que ce soit sans autorisation ecrite du proprietaire.
Propriete de c FCI. Droits de reproduction FCI.

A
FCI

All rights strictly reserved. Reproduction or issue to third parties in any
form whatever is not permitted without written authority from the proprietor.
Property of FCI. Copyright FCI.

PRODUCT NUMBER

51601-XX001__

NOTE: 2

CONNECTOR NOTES:

- HOUSING MATERIAL: UL94 V-0 GLASS FILLED HIGH TEMP.
THERMOPLASTIC, COLOR: BLACK
SIGNAL PIN MATERIAL: COPPER ALLOY.
POWER CONTACT MATERIAL: COPPER ALLOY.
- PLATING:
51601-XX001,51601-XX001LF,PLATING SPEC SEE PRINT:100064183.
- MANUFACTURER'S NAME, P/N, AND DATE CODE TO APPEAR ON
THIS SURFACE.
- PRODUCT SPECIFICATION GS-12-149.

PCB NOTES:

- ALL DIMENSIONS ARE BASIC UNLESS OTHERWISE SPECIFIED.
- ALL THROUGH HOLES ARE LOCATED WITH A TRUE POSITION OF 0.004[0.10]
- ALL HOLE DIAMETERS ARE FINISHED HOLE SIZE
- $\varnothing 0.079$ [2.01] THROUGH HOLES ARE UNPLATED
- $\varnothing 0.0453 \pm 0.0010$ [1.151 ± 0.025] DRILLED HOLES PLATED WITH
0.0003[0.008] MIN SnPb OVER 0.001[0.03] ± 0.003 [0.08] Cu PLATING
TO ACHIEVE A 0.040 ± 0.003 [1.02 ± 0.07] HOLE

THIS FILE WAS ORIGINALLY CREATED IN THE PRO
ENGINEER ENVIRONMENT AND ANY FUTURE REVISIONS TO
THIS FILE MUST BE MADE IN THE PRO ENGINEER
ENVIRONMENT

form no. 7530-001-103

1 | 2

3 |

4

mat'l code				NOTE 1		tolerances unless otherwise specified		CUSTOMER		<div><div><div>A</div><div>FCI</div></div><div>www.fciconnect.com</div></div>													
ltr	ecn no.	dr	date	linear	.XX±.01/.X±.3		projection	COPY		<div><div><div><div></div><div></div></div><div></div></div></div>	title												
G					.XXX±.005/.X±.13			7P + 48S															
					.XXXX±.0020/.XXX±.051																		
				angles	0°±2°				RIGHT ANGLE SOLDER HEADER														
				dr	D. WOLFORD	10-30-98						product family	PWRBLADE	code									
				enrg	J. BROWN	10-30-98									size	dwg no	213						
				chr	J. BROWN	10-30-98												A	51601	sheet			
				appd	J. BROWN	10-30-98															scale	1:1	3
sheet index		revision sheet																					

cage code 22526

4

PDM: Rev:G

STATUS Released

Printed: Jul 24, 2008