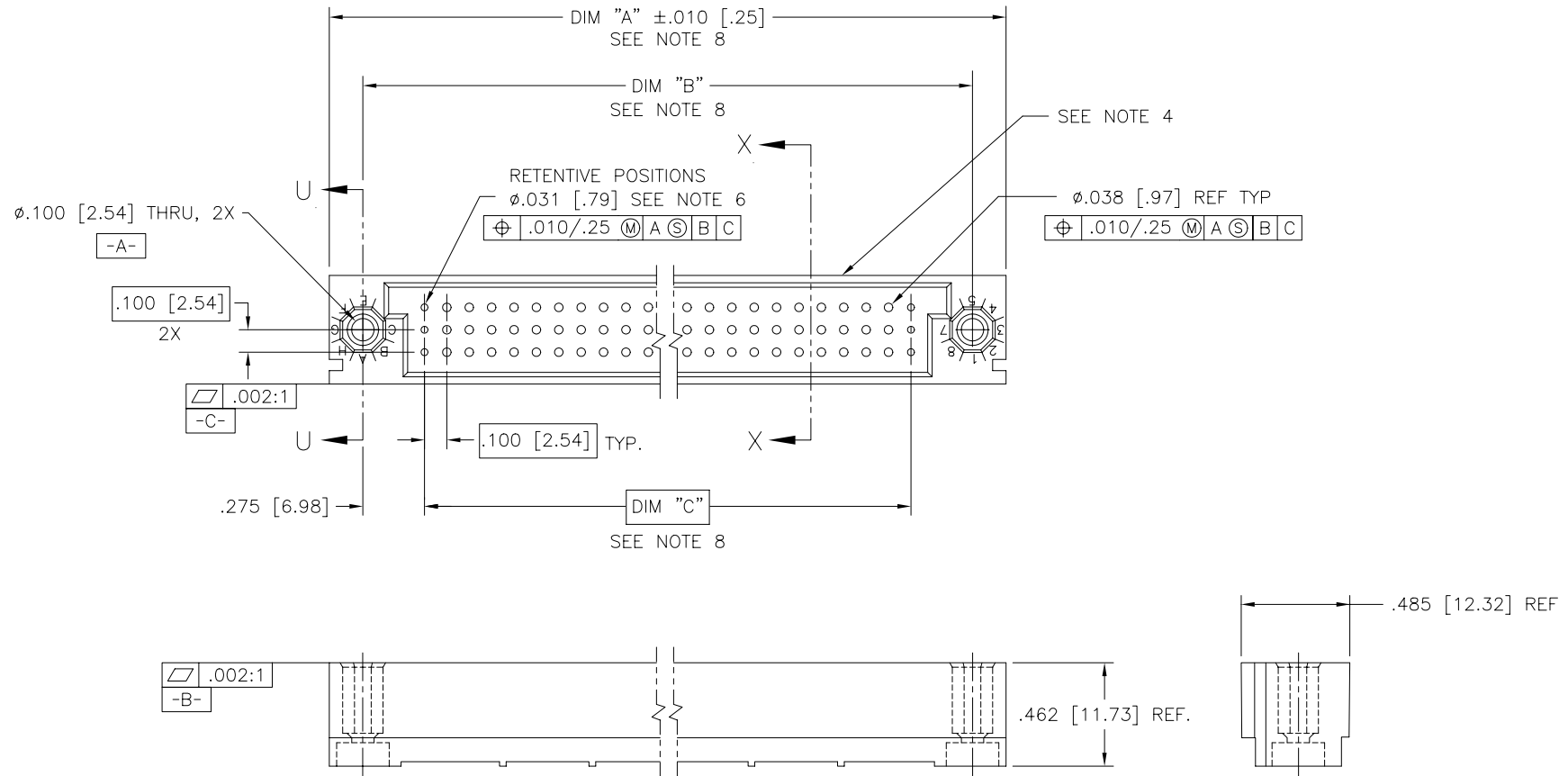






FCIconnect.com

Copyright FCI

PRODUCT NO.
SEE NOTE 1



mat'l. code NOTE 3				surface ISO 1302 ✓		tolerance ISO 406 ISO 1101	projection 	product family HPC		
ltr	ecn	no	dr	date	tolerances unless otherwise specified			title		
G	v10135	LSS		1/11/01	angles linear		.XX ±.01/.3	INCH/MM	VERTICAL SHROUD-RETENTIVE 3 ROW W/O GUIDE PINS	
H	v20188	MEM		2/14/02			.XXX ±.005/.13			
J	v20333	MEM		2/14/02		0°±2°	.XXXX ±.0020/.051			
K	v21752	TAB		11/12/02	dr	D. SHEAFFER	8/07/91	scale 1:1		
L	v03-0409	MEM		4/11/03	enrg	S. CLARK	10/23/91		dwg no	sheet 1 of 5 size
M	v05-0699	DAI		8/19/05	chr	S. CLARK	10/23/91		50428	A3
N	M06-0255	AEA		7/07/06	appd	S. CLARK	10/23/91		type Product Customer Drawing	
sheet	revision	N	N	N	N	N				
index	sheet	1	2	3	4	5				

form: A3

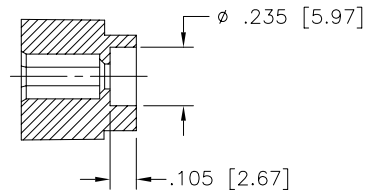
PDM: Rev:N

STATUS Released

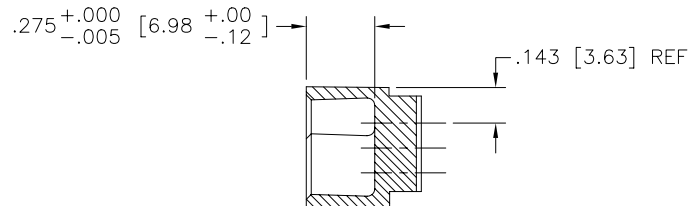
Printed: Jul 23, 2008

PRODUCT NUMBER

SEE NOTE 1



SECTION U-U



SECTION X-X

NOTES:

- ①. PRODUCT NUMBERING CODE:
 50428-X YYX LF
 LEAD FREE (OPTIONAL) SEE NOTE 7
 ALWAYS "X"
 NO. OF POSITIONS (SEE NOTE 2)
 ALWAYS "X"
 BASE NUMBER

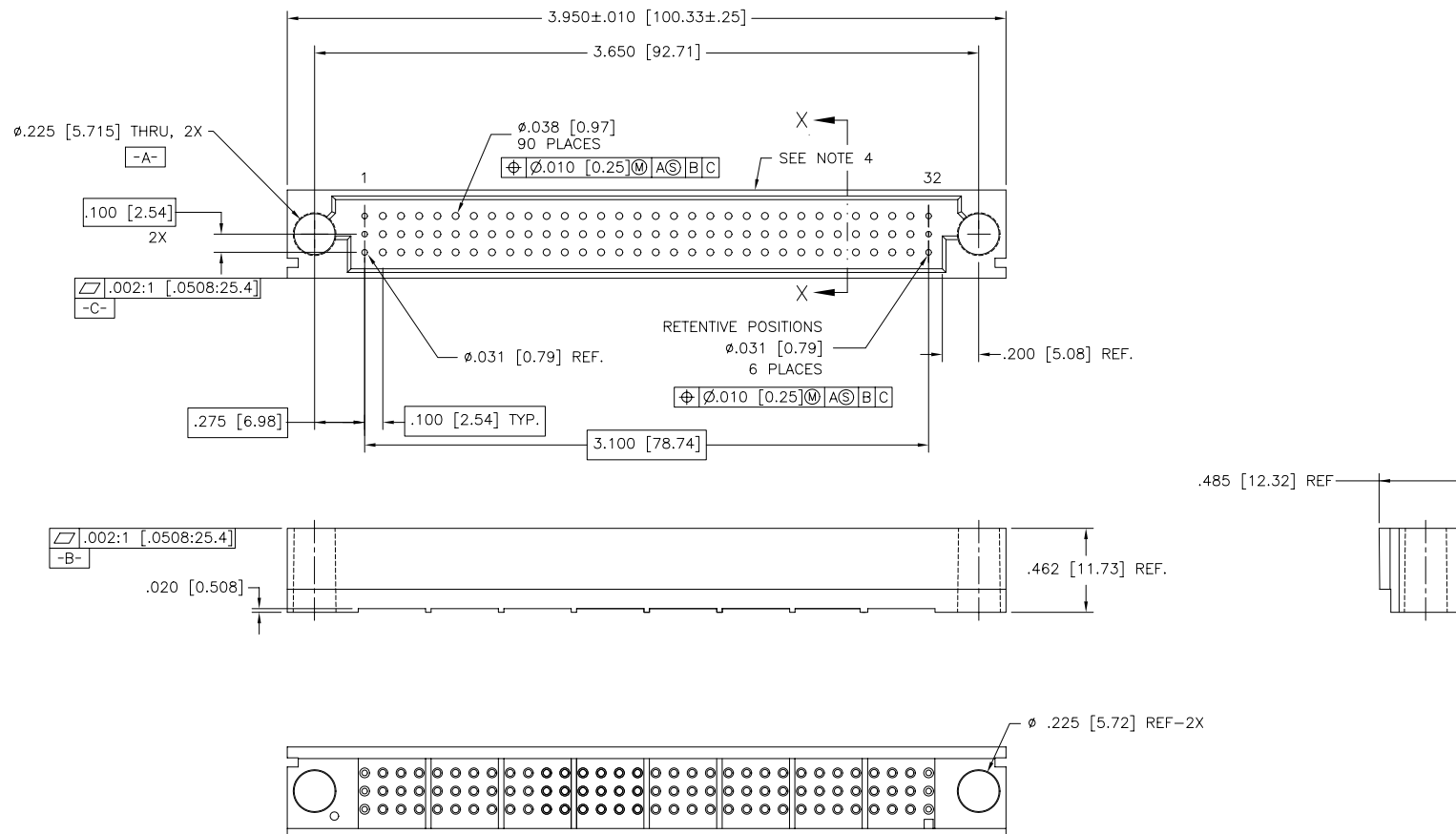
SEE SHEET 3 FOR P/N 50428-XX001 OR 50428-XX001LF
 SEE SHEET 4 FOR P/N 50428-XX002 OR 50428-XX002LF
 SEE SHEET 5 FOR P/N 50428-XX003 OR 50428-XX003LF

- ②. THIS PRODUCT IS CONFIGURED IN SIZES OF 6 THRU 80 COLUMNS IN INCREMENTS OF ONE.
 i.e.: 6, 7, 8, 9,.....79, 80.
- ③. MATERIAL: GLASS AND MINERAL FILLED THERMOPLASTIC
 FLAME RETARDANT PER UL94 V-0. COLOR: BLACK
- ④. MANFACUTRE'S NAME, P/N, AND LOT CODE TO APPEAR ON THIS SURFACE.
5. THIS SHROUD WILL WITHSTAND EXPOSURE TO 260°C PEAK TEMPERTURE FOR 10-30 SECONDS IN A CONVECTION, INFRA-RED OR VAPOR PHASE REFLOW OVEN.
- ⑥. DIMENSION APPLIES TO END COLUMN HOLES AT BOTH ENDS.
- ⑦. THIS PRODUCT (WITH "LF" SUFFIX) MEETS EUROPEAN UNION DIRECTIVES AND OTHER COUNTRY REGULATIONS AS DESCRIBED IN GS-22-008.
- ⑧. LENGTH FORMULAS
 DIM A = $.100/2.54 \times \text{NO. OF COLUMNS} + .75/19.1$
 DIM B = $.100/2.54 \times \text{NO. OF COLUMNS} + .450/11.43$
 DIM C = $.100/2.54 \times \text{NO. OF COLUMNS} - .100/2.54$

mat'l. code				surface	tolerance	projection	product family
-				ISO 1302 ✓	ISO 406 ISO 1101	⊕	HPC
ltr	ecn	no	dr	date	tolerances unless otherwise specified	INCH/MM	title
N					angles linear .XX ±.01/.3 .XXX ±.005/.13 .XXXX ±.0020/.051	scale 1:1	VERTICAL SHROUD-RETENTIVE 3 ROW W/O GUIDE PINS
			dr	D. SHEAFFER	8/07/91	FCI	dwg no
			enr	S. CLARK	10/23/91		sheet 2 of 5 size
			chr	S. CLARK	10/23/91		50428 A3
			appd	S. CLARK	10/23/91		type Product Customer Drawing
sheet	revision						
index	sheet						

Top view of a vertical shroud assembly. The overall length is 5.75 ± .010 [1.25] and the overall width is 4.900. The distance between the two circular end ports is 5.450. The end ports are labeled U and X. The distance from the left end to the first port is .275 [6.98]. The distance between the two ports is .100 [2.54] TYP. The distance from the right port to the right end is .275 [6.98]. The distance from the left end to the first port is .100 [2.54] 2X. The distance from the first port to the right port is .100 [2.54] TYP. The distance from the right port to the right end is .100 [2.54] 2X. The distance from the left end to the first port is .100 [2.54] 2X. The distance from the first port to the right port is .100 [2.54] TYP. The distance from the right port to the right end is .100 [2.54] 2X. The distance from the left end to the first port is .100 [2.54] 2X. The distance from the first port to the right port is .100 [2.54] TYP. The distance from the right port to the right end is .100 [2.54] 2X. The distance from the left end to the first port is .100 [2.54] 2X. The distance from the first port to the right port is .100 [2.54] TYP. The distance from the right port to the right end is .100 [2.54] 2X. The distance from the left end to the first port is .100 [2.54] 2X. The distance from the first port to the right port is .100 [2.54] TYP. The distance from the right port to the right end is .100 [2.54] 2X. The distance from the left end to the first port is .100 [2.54] 2X. The distance from the first port to the right port is .100 [2.54] TYP. The distance from the right port to the right end is .100 [2.54] 2X. The distance from the left end to the first port is .100 [2.54] 2X. The distance from the first port to the right port is .100 [2.54] TYP. The distance from the right port to the right end is .100 [2.54] 2X. The distance from the left end to the first port is .100 [2.54] 2X. The distance from the first port to the right port is .100 [2.54] TYP. The distance from the right port to the right end is .100 [2.54] 2X. The distance from the left end to the first port is .100 [2.54] 2X. The distance from the first port to the right port is .100 [2.54] TYP. The distance from the right port to the right end is .100 [2.54] 2X. The distance from the left end to the first port is .100 [2.54] 2X. The distance from the first port to the right port is .100 [2.54] TYP. The distance from the right port to the right end is .100 [2.54] 2X. The distance from the left end to the first port is .100 [2.54] 2X. The distance from the first port to the right port is .100 [2.54] TYP. The distance from the right port to the right end is .100 [2.54] 2X. The distance from the left end to the first port is .100 [2.54] 2X. The distance from the first port to the right port is .100 [2.54] TYP. The distance from the right port to the right end is .100 [2.54] 2X. The distance from the left end to the first port is .100 [2.54] 2X. The distance from the first port to the right port is .100 [2.54] TYP. The distance from the right port to the right end is .100 [2.54] 2X. The distance from the left end to the first port is .100 [2.54] 2X. The distance from the first port to the right port is .100 [2.54] TYP. The distance from the right port to the right end is .100 [2.54] 2X. The distance from the left end to the first port is .100 [2.54] 2X. The distance from the first port to the right port is .100 [2.54] TYP. The distance from the right port to the right end is .100 [2.54] 2X. The distance from the left end to the first port is .100 [2.54] 2X. The distance from the first port to the right port is .100 [2.54] TYP. The distance from the right port to the right end is .100 [2.54] 2X. The distance from the left end to the first port is .100 [2.54] 2X. The distance from the first port to the right port is .100 [2.54] TYP. The distance from the right port to the right end is .100 [2.54] 2X. The distance from the left end to the first port is .100 [2.54] 2X. The distance from the first port to the right port is .100 [2.54] TYP. The distance from the right port to the right end is .100 [2.54] 2X. The distance from the left end to the first port is .100 [2.54] 2X. The distance from the first port to the right port is .100 [2.54] TYP. The distance from the right port to the right end is .100 [2.54] 2X. The distance from the left end to the first port is .100 [2.54] 2X. The distance from the first port to the right port is .100 [2.54] TYP. The distance from the right port to the right end is .100 [2.54] 2X. The distance from the left end to the first port is .100 [2.54] 2X. The distance from the first port to the right port is .100 [2.54] TYP. The distance from the right port to the right end is .100 [2.54] 2X. The distance from the left end to the first port is .100 [2.54] 2X. The distance from the first port to the right port is .100 [2.54] TYP. The distance from the right port to the right end is .100 [2.54] 2X. The distance from the left end to the first port is .100 [2.54] 2X. The distance from the first port to the right port is .100 [2.54] TYP. The distance from the right port to the right end is .100 [2.54] 2X. The distance from the left end to the first port is .100 [2.54] 2X. The distance from the first port to the right port is .100 [2.54] TYP. The distance from the right port to the right end is .100 [2.54] 2X. The distance from the left end to the first port is .100 [2.54] 2X. The distance from the first port to the right port is .100 [2.54] TYP. The distance from the right port to the right end is .100 [2.54] 2X. The distance from the left end to the first port is .100 [2.54] 2X. The distance from the first port to the right port is .100 [2.54] TYP. The distance from the right port to the right end is .100 [2.54] 2X. The distance from the left end to the first port is .100 [2.54] 2X. The distance from the first port to the right port is .100 [2.54] TYP. The distance from the right port to the right end is .100 [2.54] 2X. The distance from the left end to the first port is .100 [2.54] 2X. The distance from the first port to the right port is .100 [2.54] TYP. The distance from the right port to the right end is .100 [2.54] 2X. The distance from the left end to the first port is .100 [2.54] 2X. The distance from the first port to the right port is .100 [2.54] TYP. The distance from the right port to the right end is .100 [2.54] 2X. The distance from the left end to the first port is .100 [2.54] 2X. The distance from the first port to the right port is .100 [2.54] TYP. The distance from the right port to the right end is .100 [2.54] 2X. The distance from the left end to the first port is .100 [2.54] 2X. The distance from the first port to the right port is .100 [2.54] TYP. The distance from the right port to the right end is .100 [2.54] 2X. The distance from the left end to the first port is .100 [2.54] 2X. The distance from the first port to the right port is .100 [2.54] TYP. The distance from the right port to the right end is .100 [2.54] 2X. The distance from the left end to the first port is .100 [2.54] 2X. The distance from the first port to the right port is .100 [2.54] TYP. The distance from the right port to the right end is .100 [2.54] 2X. The distance from the left end to the first port is .100 [2.54] 2X. The distance from the first port to the right port is .100 [2.54] TYP. The distance from the right port to the right end is .100 [2.54] 2X. The distance from the left end to the first port is .100 [2.54] 2X. The distance from the first port to the right port is .100 [2.54] TYP. The distance from the right port to the right end is .100 [2.54] 2X. The distance from the left end to the first port is .100 [2.54] 2X. The distance from the first port to the right port is .100 [2.54] TYP. The distance from the right port to the right end is .100 [2.54] 2X. The distance from the left end to the first port is .100 [2.54] 2X. The distance from the first port to the right port is .100 [2.54] TYP. The distance from the right port to the right end is .100 [2.54] 2X. The distance from the left end to the first port is .100 [2.54] 2X. The distance from the first port to the right port is .100 [2.54] TYP. The distance from the right port to the right end is .100 [2.54] 2X. The distance from the left end to the first port is .100 [2.54] 2X. The distance from the first port to the right port is .100 [2.54] TYP. The distance from the right port to the right end is .100 [2.54] 2X. The distance from the left end to the first port is .100 [2.54] 2X. The distance from the first port to the right port is .100 [2.54] TYP. The distance from the right port to the right end is .100 [2.54] 2X. The distance from the left end to the first port is .100 [2.54] 2X. The distance from the first port to the right port is .100 [2.54] TYP. The distance from the right port to the right end is .100 [2.54] 2X. The distance from the left end to the first port is .100 [2.54] 2X. The distance from the first port to the right port is .100 [2.54] TYP. The distance from the right port to the right end is .100 [2.54] 2X. The distance from the left end to the first port is .100 [2.54] 2X. The distance from the first port to the right port is .100 [2.54] TYP. The distance from the right port to the right end is .100 [2.54] 2X. The distance from the left end to the first port is .100 [2.54] 2X. The distance from the first port to the right port is .100 [2.54] TYP. The distance from the right port to the right end is .100 [2.54] 2X. The distance from the left end to the first port is .100 [2.54] 2X. The distance from the first port to the right port is .100 [2.54] TYP. The distance from the right port to the right end is .100 [2.54] 2X. The distance from the left end to the first port is .100 [2.54] 2X. The distance from the first port to the right port is .100 [2.54] TYP. The distance from the right port to the right end is .100 [2.54] 2X. The distance from the left end to the first port is .100 [2.54] 2X. The distance from the first port to the right port is .100 [2.54] TYP. The distance from the right port to the right end is .100 [2.54] 2X. The distance from the left end to the first port is .100 [2.54] 2X. The distance from the first port to the right port is .100 [2.54] TYP. The distance from the right port to the right end is .100 [2.54] 2X. The distance from the left end to the first port is .100 [2.54] 2X. The distance from the first port to the right port is .100 [2.54] TYP. The distance from the right port to the right end is .100 [2.54] 2X. The distance from the left end to the first port is .100 [2.54] 2X. The distance from the first port to the right port is .100 [2.54] TYP. The distance from the right port to the right end is .100 [2.54] 2X. The distance from the left end to the first port is .100 [2.54] 2X. The distance from the first port to the right port is .100 [2.54] TYP. The distance from the right port to the right end is .100 [2.54] 2X. The distance from the left end to the first port is .100 [2.54] 2X. The distance from the first port to the right port is .100 [2.54] TYP. The distance from the right port to the right end is .100 [2.54] 2X. The distance from the left end to the first port is .100 [2.54] 2X. The distance from the first port to the right port is .100 [2.54] TYP. The distance from the right port to the right end is .100 [2.54] 2X. The distance from the left end to the first port is .100 [2.54] 2X. The distance from the first port to the right port is .100 [2.54] TYP. The distance from the right port to the right end is .100 [2.54] 2X. The distance from the left end to the first port is .100 [2.54] 2X. The distance from the first port to the right port is .100 [2.54] TYP. The distance from the right port to the right end is .100 [2.54] 2X. The distance from the left end to the first port is .100 [2.54] 2X. The distance from the first port to the right port is .100 [2.54] TYP. The distance from the right port to the right end is .100 [2.54] 2X. The distance from the left end to the first port is .100 [2.54] 2X. The distance from the first port to the right port is .100 [2.54] TYP. The distance from the right port to the right end is .100 [2.54] 2X. The distance from the left

PRODUCT NUMBER	DESCRIPTION	NOTE
50428-XX002	96 POSITION SPECIAL SHROUD	SEE NOTE 1
50428-XX002LF	SAME AS 50428-XX002	SEE NOTE 7

[illegible]

