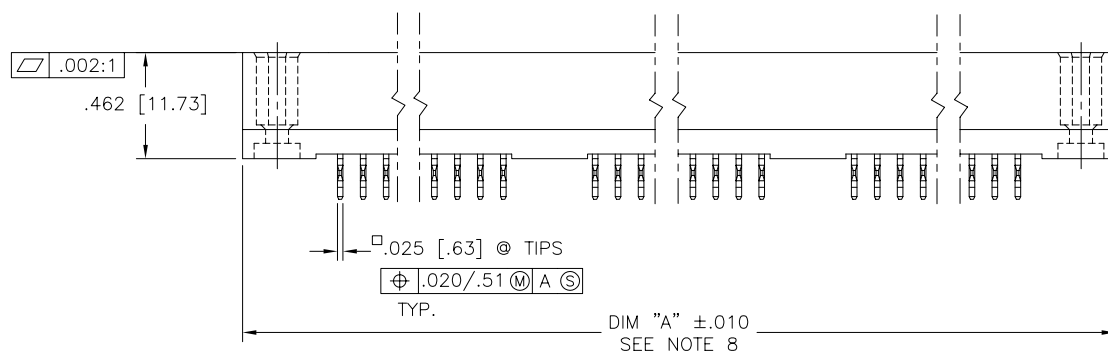
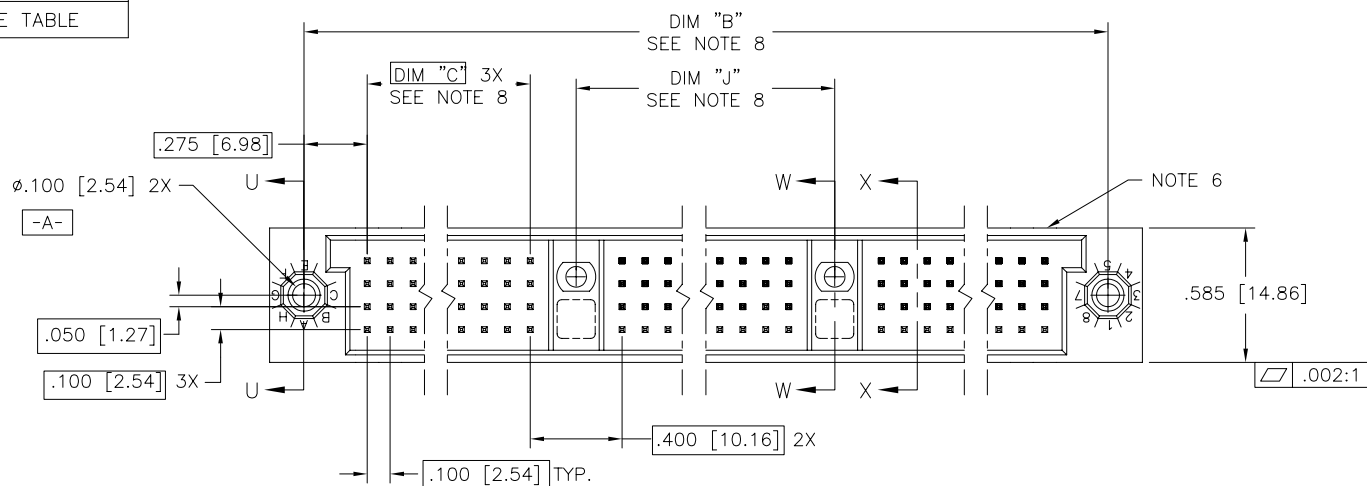
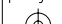



SEE TABLE



TAIL LENGTH  
SEE TABLE

mat'l. code SEE NOTE 3				surface ISO 1302 ✓				tolerance ISO 406 ISO 1101		projection 		product family HPC			
litr		ecn no dr		date		tolerances unless otherwise specified								title	
D		V40285		GIP		12/20/94		angles linear		.XX±.01/.3		INCH/MM  scale 1:1		4 ROW VERTICAL HEADER W/PRESS—FIT PINS, 2 G.P.	
E		V40941		PDP		6/1/94				.xxx±.005/.13					
F		V82253		HTB		12/29/98				.xxxxx±.0020/.051					
				0'±2'											
G		V00271		JWS		1/31/00		dr		D.SHEAFFER		3/14/91			
H		V05-0739		DAI		09/14/05		enrg		S.CLARK		3/14/91			
J		V05-1039		DAI		11/11/05		chr		S.CLARK		3/14/91			
K		M06-0283		MHT		7/27/06		appd		S.CLARK		3/14/91			
sheet index		revision sheet		K	K	K	K	K	K	K	K	K			
				1	2	3	4	5	6	7					

1

2

3

4

5

6

PRODUCT NUMBER

SEE TABLE

## NOTES:

## 1. PRODUCT NUMBERING CODE:

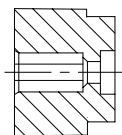
50011 - X YYY Z LF

LEAD FREE (OPTIONAL)  
TAIL LENGTH (SEE TABLE)  
NO. OF POSITIONS (SEE NOTE 2)  
PLATING (SEE TABLE)  
BASE NUMBER

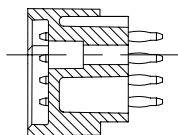
PRODUCT NUMBERING CODE FOR  
SELECT LOAD PART NUMBERS:

50011 - XXYYY LF

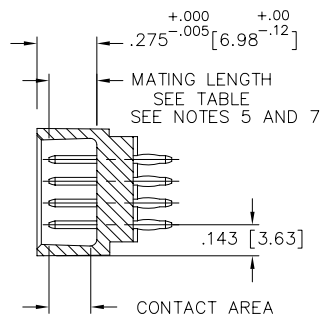
LEAD FREE (OPTIONAL)  
SEQUENCE NUMBER  
ALWAYS 'XX'  
BASE NUMBER



SECTION U-U



SECTION W-W



SECTION X-X

② THIS PRODUCT IS CONFIGURED IN SIZES OF 30 thru 150 COLUMNS IN INCREMENTS OF THREE.  
i.e.: 30,33,36,39,.....147,150.

③ HOUSING MATERIAL: GLASS AND MINERAL FILLED HIGH TEMP. THERMOPLASTIC. FLAME RETARDANT PER UL94V-0. COLOR: BLACK.  
PIN MATERIAL: PHOS BRONZE

④  $\phi .0453/1.151$  DRILLED HOLE PLATED WITH  $.0003/.007$  MIN. SnPb OVER  $.001/.03$  to  $.003/.08$  Cu. PLATING TO ACHIEVE A  $\phi .040 \pm .003/1.02 \pm .08$  HOLE.

⑤ TO ASSURE PROPER INSTALLATION: TOOLING, AS SPECIFIED IN INSTRUCTION MANUAL 155915-001 MUST BE USED. PIN MATING LENGTH WILL BE  $\pm .002/.05$  AFTER INSTALLATION.

⑥ COMPANY NAME, PART NUMBER AND LOT CODE TO APPEAR ON THIS SURFACE PER BUS-12-108.

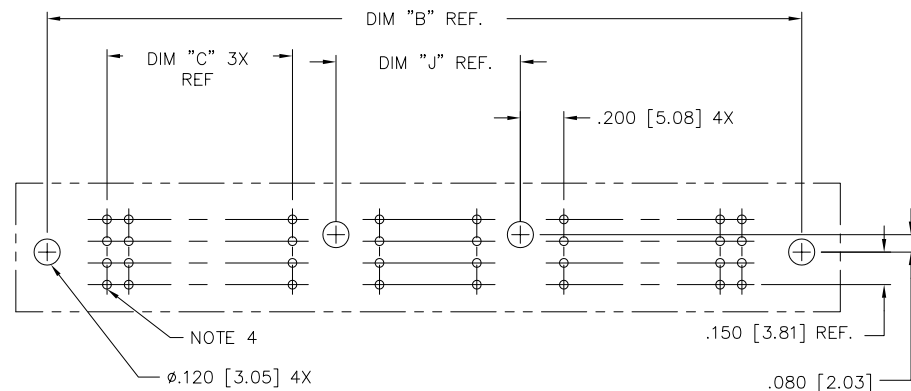
⑦ REFERENCE 50809 FOR F.M.L.B. AVAILABLE OPTIONS AND WORKSHEET.

## ⑧ LENGTH FORMULAS:

DIM "A" =  $.100/2.54 \times \text{NO. OF COLUMNS} + 1.35/34.3$ DIM "B" =  $.100/2.54 \times \text{NO. OF COLUMNS} + 1.050/26.67$ DIM "C" =  $.100/2.54 \times \text{NO. OF COLUMNS DIVIDED BY 3} - .100/2.54$ DIM "J" =  $.100/2.54 \times \text{NO. OF COLUMNS DIVIDED BY 3} + .300/7.62$ 

9. THIS PRODUCT (WITH "LF" SUFFIX) MEETS EUROPEAN UNION DIRECTIVES AND OTHER COUNTRY REGULATIONS AS DESCRIBED IN GS-22-008.

10. THIS HOUSING WILL WITHSTAND EXPOSURE TO 260° C PEAK TEMPERATURE FOR 10-30 SECONDS IN A CONVECTION, INFRA-RED OR VAPOR PHASE REFLOW OVEN.



RECOMMENDED PCB LAYOUT  
(ALL HOLES LOCATED ON  $.100/2.54$  GRID  
UNLESS OTHERWISE SPECIFIED)

mat'l. code SEE NOTE 3			surface ISO 1302 ✓	tolerance ISO 406 ISO 1101	projection INCH/MM	product family HPC		
ltr	ec	no	dr	date	tolerances unless otherwise specified	title		
K					angles linear .XX±.01/.3	4 ROW VERTICAL HEADER		
					0'±2' .XXX±.005/.13	W/PRESS-FIT PINS, 2 G.P.		
					.XXX±.0020/.05	dwg no		
			dr	D.SHEAFFER	3/14/91	sheet 2 of 7 size		
			enr	S.CLARK	3/14/91	50011		
			chr	S.CLARK	3/14/91	A3		
			appd	S.CLARK	3/14/91	type Product Customer Drawing		
sheet	revision							
index	sheet							

form: A3

1

2

3

4

5

6



FCIconnect.com

Copyright FCI

PRODUCT NUMBER  
SEE TABLE

SELECT LOAD (50011-XX005 AND 50011-XX005LF ONLY)

	1	5	10	15	20	25	30	35	40	45	GUIDE
D	B						B	B	B		
C							B	B	B		
B	B	B	B	B	B		B	B	B		
A	B	B	B	B	B		B	B	B		

	1	46	50	55	60	65	70	75	80	85	90	GUIDE
						B	B					
						B	B					
						B	B					
						B	B					

	91	95	100	105	110	115	120	125	130	135	
					B	B	B				
					B	B	B				
					B	B	B				
					B	B	B				

SPECIAL NOTES FOR -XX005 AND -XX005LF ONLY:

- ALL POSITIONS ARE LOADED WITH "A", EXCEPT AS SHOWN.
- COLUMN 1 ROW A IS DESIGNATED AS SIGNAL PIN 1, AS VIEWED FROM THE MATING FACE.
- SIGNAL DATA FOR 50011-XX005 AND 50011-XX005LF:  
SIZE 4 X 135  
TOTAL NO. OF POSITIONS - 540  
NO. OF POSITIONS LOADED - 540



ITEM KEY	QTY.	MATING LENGTH	TAIL LENGTH
A	455	.200/5.59	.410/10.41
B	85	.260/6.60	.420/10.67

mat'l. code SEE NOTE 3	surface ISO 1302 ✓	tolerance ISO 406 ISO 1101	projection 	product family HPC
ltr K	ecr no	dr date	tolerances unless otherwise specified linear .XX±.01/.3 angular .XXX±.005/.13 0°±2' .XXX±.0020/.051	title 4 ROW VERTICAL HEADER W/PRESS-FIT PINS, 2 G.P.
			scale 1:1	dwg no 50011
		dr D.SHEAFFER 3/14/91		sheet 3 of 7 size A3
		enr S.CLARK 3/14/91		
		chr S.CLARK 3/14/91		
		appd S.CLARK 3/14/91		
sheet index	revision sheet			type Product Customer Drawing

form: A3

SPECIAL NOTES FOR -XX007 AND -XX007LF ONLY:

1. ALL POSITIONS ARE LOADED WITH "A", EXCEPT AS SHOWN.
2. COLUMN 1 ROW A IS DESIGNATED AS SIGNAL PIN 1, AS VIEWED FROM THE MATING FACE.
3. SIGNAL DATA FOR 50011-XX007 AND 50011-XX007LF:  
 SIZE 4 X 135  
 TOTAL NO. OF POSITIONS - 540  
 NO. OF POSITIONS LOADED - 540

mat'l. code SEE NOTE 3				surface ISO 1302 ✓		tolerance ISO 406 ISO 1101		projection 		product family HPC			
ltr ecn no dr date				tolerances unless otherwise specified						title			
K				angles		linear		INCH/MM		4 ROW VERTICAL HEADER			
						.XX±.01/.3				W/PRESS-FIT PINS, 2 G.P.			
						.XXX±.005/.13							
				0'±2'		.XXXX±.0020/.05		scale 1:1		dwg no			
				dr		D.SHEAFFER 3/14/91				sheet 4 of 7 size			
				engr		S.CLARK 3/14/91				50011			
				chr		S.CLARK 3/14/91				A3			
				appd		S.CLARK 3/14/91				type Product Customer Drawing			
sheet index		revision sheet											



PRODUCT NUMBER  
SEE TABLE

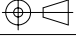

SELECT LOAD (50011-XX011 AND 50011-XX011F ONLY)

D C B A	1	5	10	15	20	25	30	35	40	45	G U I D E
				B		B		B		B	
				B		B		B		B	
			B	B		B	B		B	B	
1	46	50	55	60	65	70	75	80	85	90	G U I D E
		B			B						
	B	B		B	B						
	B	B		B	B						
	91	95	100	105	110	115	120	125	130	135	

SPECIAL NOTES FOR -XX011 AND -XX011LF ONLY:

- ALL POSITIONS ARE LOADED WITH "A", EXCEPT AS SHOWN.
- COLUMN 1 ROW A IS DESIGNATED AS SIGNAL PIN 1, AS VIEWED FROM THE MATING FACE.
- SIGNAL DATA FOR 50011-XX011 AND 50011-XX011LF:  
SIZE 4 X 135  
TOTAL NO. OF POSITIONS - 540  
NO. OF POSITIONS LOADED - 540

ITEM KEY	QTY.	MATING LENGTH	TAIL LENGTH
A	492	.200/5.08	.177/4.50
B	48	.220/5.58	.533/13.54

mat'l. code SEE NOTE 3		surface ISO 1302 ✓	tolerance ISO 406 ISO 1101	projection 	product family HPC
ltr K	ecr no	dr date	tolerances unless otherwise specified linear .XX±.01/.3 angular .XXX±.005/.13 0°±2' .XXX±.0020/.051	INCH/MM scale 1:1	title 4 ROW VERTICAL HEADER W/PRESS-FIT PINS, 2 G.P.
		dr D.SHEAFFER	3/14/91		dwg no 50011
		enr S.CLARK	3/14/91		sheet 6 of 7 size A3
		chr S.CLARK	3/14/91		type Product Customer Drawing
		appd S.CLARK	3/14/91		
sheet index	revision sheet				



FCIconnect.com

Copyright FCI

PRODUCT NUMBER	NUMBER OF POSTIONS SEE NOTE 2	MATING LENGTH	TAIL LENGTH ±.015/0.38	TERMINAL PLATING
50011-1YYYA	YYY	.220[5.59]	.177/4.50	30μ"/76μ GOLD
50011-1YYYC	YYY		.533/13.54	30μ"/76μ GOLD
50011-1YYYD	YYY		.733/18.62	30μ"/76μ GOLD
50011-1YYYG	YYY		.250/6.35	30μ"/76μ GOLD
50011-1YYYL	YYY		.188/4.78	30μ"/76μ GOLD
50011-1YYYP	YYY		.470/11.94	30μ"/76μ GOLD
50011-3YYYA	YYY		.177/4.50	50μ"/1.27μ GOLD
50011-3YYYC	YYY		.533/13.54	50μ"/1.27μ GOLD
50011-3YYYD	YYY		.733/18.62	50μ"/1.27μ GOLD
50011-3YYYG	YYY		.250/6.35	50μ"/1.27μ GOLD
50011-3YYYL	YYY		.188/4.78	50μ"/1.27μ GOLD
50011-3YYYP	YYY		.470/11.94	50μ"/1.27μ GOLD
50011-5YYYA	YYY		.177/4.50	30μ"/76μ GXT
50011-5YYYALF	YYY		.177/4.50	30μ"/76μ GXT
50011-5YYYC	YYY		.533/13.54	30μ"/76μ GXT
50011-5YYYCLF	YYY		.533/13.54	30μ"/76μ GXT
50011-5YYYD	YYY		.733/18.62	30μ"/76μ GXT
50011-5YYYDLF	YYY		.733/18.62	30μ"/76μ GXT
50011-5YYYG	YYY		.250/6.35	30μ"/76μ GXT
50011-5YYYGLF	YYY		.250/6.35	30μ"/76μ GXT
50011-5YYYL	YYY		.188/4.78	30μ"/76μ GXT
50011-5YYYLLF	YYY		.188/4.78	30μ"/76μ GXT
50011-5YYYPLF	YYY	.220[5.59]	.470/11.94	30μ"/76μ GXT
50011-XX005	540	SEE SHEET 3	SEE SHEET 3	30μ"/76μ GXT
50011-XX005LF	540	SEE SHEET 3	SEE SHEET 3	30μ"/76μ GXT
50011-XX007	540	SEE SHEET 4	SEE SHEET 4	30μ"/76μ GXT
50011-XX007LF	540	SEE SHEET 4	SEE SHEET 4	30μ"/76μ GXT
50011-XX008	540	SEE SHEET 5	SEE SHEET 5	30μ"/76μ GXT
50011-XX008LF	540	SEE SHEET 5	SEE SHEET 5	30μ"/76μ GXT
50011-XX011	540	SEE SHEET 6	SEE SHEET 6	30μ"/76μ GXT
50011-XX011LF	540	SEE SHEET 6	SEE SHEET 6	30μ"/76μ GXT

mat'l. code SEE NOTE 3			surface ISO 1302 ✓	tolerance ISO 406 ISO 1101	projection 	product family HPC
ltr	ec	no	dr	date	tolerances unless otherwise specified	title
K					angles linear .XX±.01/.3	4 ROW VERTICAL HEADER
					0'±2' .XXX±.005/.13	W/PRESS-FIT PINS, 2 G.P.
					.XXX±.0020/.051	scale 1:1
			dr	D.SHEAFFER	3/14/91	dwg no
			enr	S.CLARK	3/14/91	sheet 7 of 7 size
			chr	S.CLARK	3/14/91	50011 A3
			appd	S.CLARK	3/14/91	type Product Customer Drawing
sheet index	revision sheet					

form: A3