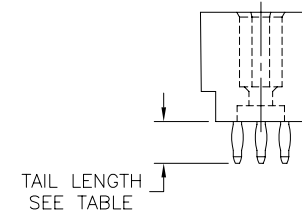
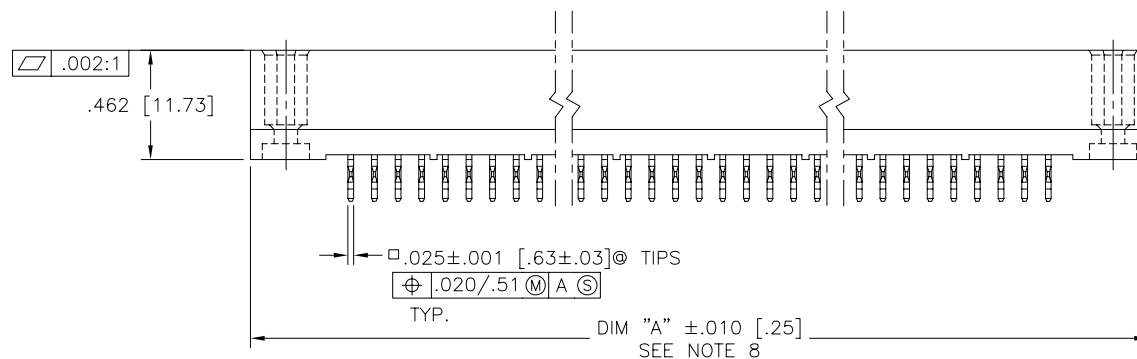
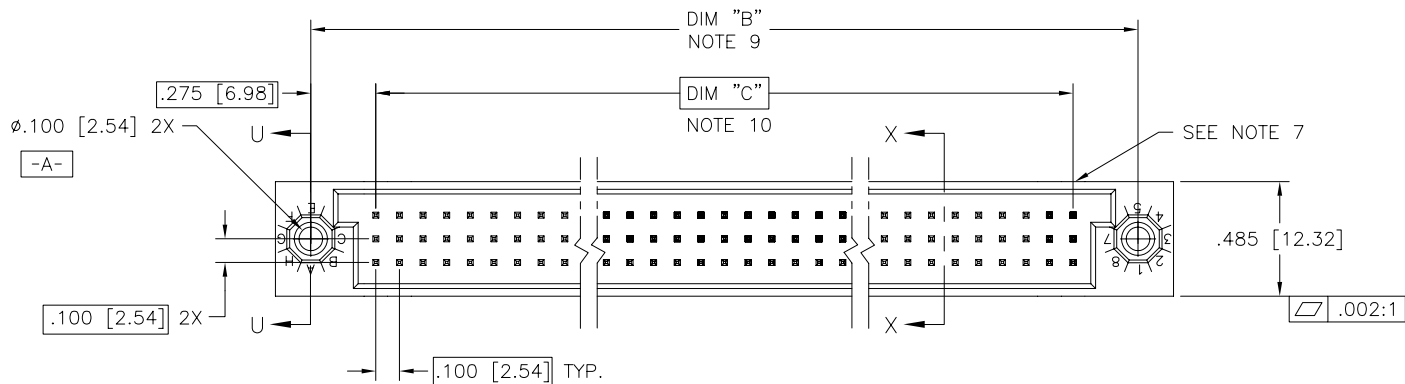




FCIconnect.com

Copyright FCI

PRODUCT NUMBER
SEE TABLE



mat'l. code SEE NOTE 3				surface ISO 1302 ✓	tolerance ISO 406 ISO 1101	projection INCH/MM	product family HPC
ltr	ecn	no	dr	date	tolerances unless otherwise specified		title
G	V82252	HTB	12/28/98		angles	.XX±.01/.3	3 ROW VERTICAL HEADER
H	V00271	JWS	1/31/00		linear	.XXX±.005/.13	W/PRESS-FIT PINS, 0 G.P.
J	V05-0514	TAB	8/2/05	0'±2'		.XXX±.0020/.051	dwg no
K	V05-0999	DAI	10/28/05	dr	D.SHEAFER	3/14/91	sheet 1 of 14
L	V05-1039	DAI	11/11/05	engr	S.CLARK	3/14/91	size
M	M06-0283	MHT	7/27/06	chr	S.CLARK	3/14/91	A3
N	M06-0490	MHT	12/13/06	appd	S.CLARK	3/14/91	type
sheet	revision	N	N	N	N	N	Product
index	sheet	1	2	3	4	5	Customer
							Drawing

form: A3

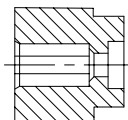


FCIconnect.com

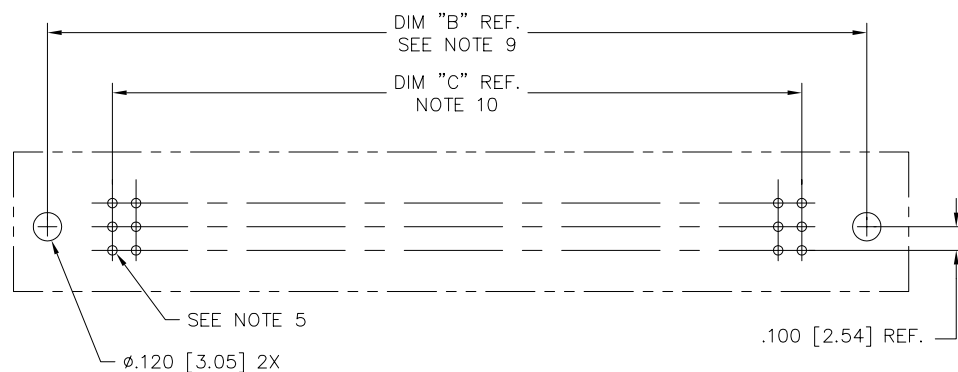
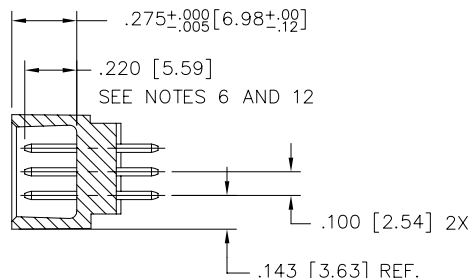
Copyright FCI

PRODUCT NUMBER
SEE TABLE

SECTION U-U



SECTION X-X



RECOMMENDED PCB LAYOUT
(ALL HOLES LOCATED ON .100/2.54 GRID
UNLESS OTHERWISE SPECIFIED)

NOTES:

- ① PRODUCT NUMBERING CODE:
50006 - X YYY Z LF
LEAD FREE (OPTIONAL)
TAIL LENGTH SEE TABLE
NO. OF POSITIONS SEE NOTE 2
PLATING SEE TABLE
BASE NUMBER
- ② THIS PRODUCT IS CONFIGURED IN SIZES OF 6 thru 80 COLUMNS IN INCREMENTS OF ONE.
i.e.: 6,7,8,9,.....79,80.
- ③ HOUSING MATERIAL: GLASS AND MINERAL FILLED HIGH TEMP. THERMOPLASTIC. FLAME RETARDANT PER UL94V-0. COLOR: BLACK.
PIN MATERIAL: PHOS BRONZE
- ④ CONTACT PLATING OPTIONS:
SEE PRODUCT NUMBER TABLE
- ⑤ ϕ .0453/1.151 DRILLED HOLE PLATED WITH .0003/.007 MIN. SnPb OVER .001/.03 to .003/.08 Cu. PLATING TO ACHIEVE A ϕ .040±.003/1.02±.08 HOLE.
- ⑥ TO ASSURE PROPER INSTALLATION: TOOLING, AS SPECIFIED IN INSTRUCTION MANUAL 155915-001 MUST BE USED. PIN MATING LENGTH WILL BE ±.002/.05 AFTER INSTALLATION.
- ⑦ COMPANY NAME, PART NUMBER AND LOT CODE TO APPEAR ON THIS SURFACE PER BUS-12-108.
- ⑧ DIM "A" CALCULATION = $.100[2.54] \times \text{NO. OF COLUMNS} + .75[19.1]$
- ⑨ DIM "B" CALCULATION = $.100[2.54] \times \text{NO. OF COLUMNS} + .450[11.43]$
- ⑩ DIM "C" CALCULATION = $.100[2.54] \times \text{NO. OF COLUMNS} - .100[2.54]$
11. ALL POSITIONS ARE LOADED EXCEPT FOR -XXYY ASSEMBLIES WHICH HAVE SELECTIVE LOADING.
- ⑫ REFERENCE 50807 FOR F.M.L.B. AVAILABLE OPTIONS AND WORKSHEET.
13. THIS PRODUCT (WITH 'LF' SUFFIX) MEETS EUROPEAN UNION DIRECTIVES AND OTHER COUNTRY REGULATIONS AS DESCRIBED IN GS-22-008.
14. THIS HOUSING WILL WITHSTAND EXPOSURE TO 260°C PEAK TEMPERATURE FOR 10-30 SECONDS IN A CONVECTION, INFRA-RED OR VAPOR PHASE REFLOW OVEN.

mat'l. code SEE NOTE 3			surface ISO 1302 ✓	tolerance ISO 406 ISO 1101	projection INCH/MM	product family HPC
ltr	ec	no	dr	date	tolerances unless otherwise specified	title
N					angles linear .XX±.01/.3	3 ROW VERTICAL HEADER
					0°±2' .XXX±.005/.13	W/PRESS-FIT PINS, 0 G.P.
					.XXX±.0020/.051	dwg no
			dr	D.SHEAFER	3/14/91	sheet 2 of 14 size
			enr	S.CLARK	3/14/91	A3
			chr	S.CLARK	3/14/91	
			appd	S.CLARK	3/14/91	
sheet index	revision sheet					type Product Customer Drawing

form: A3



FCIconnect.com

Copyright FCI

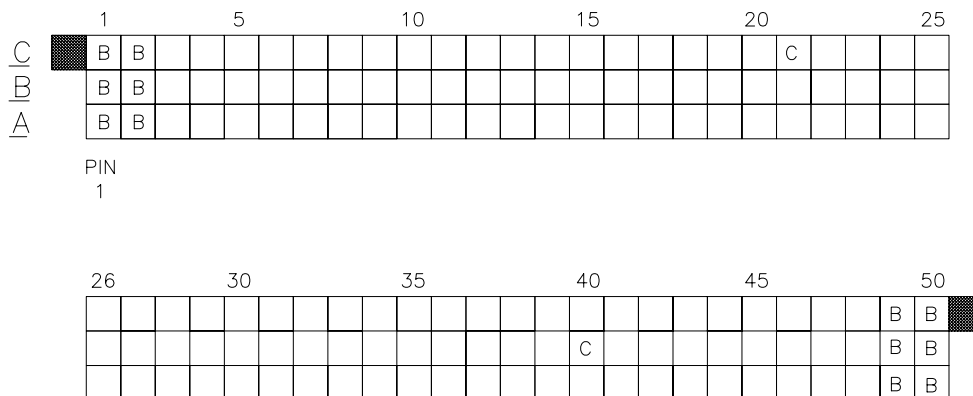
PRODUCT NO.	NUMBER OF POSITIONS NOTE 2	TAIL LENGTH ±.015/0.38	CONTACT PLATING
50006-1YYYA	YYY	.177/4.50	30u"/.76u GOLD
50006-1YYC	YYY	.533/13.54	30u"/.76u GOLD
50006-1YYD	YYY	.733/18.62	30u"/.76u GOLD
50006-1YYG	YYY	.250/6.35	30u"/.76u GOLD
50006-1YYL	YYY	.188/4.78	30u"/.76u GOLD
50006-1YYP	YYY	.470/11.94	30u"/.76u GOLD
50006-3YYYA	YYY	.177/4.50	50u"/1.27u GOLD
50006-3YYC	YYY	.533/13.54	50u"/1.27u GOLD
50006-3YYD	YYY	.733/18.62	50u"/1.27u GOLD
50006-3YYG	YYY	.250/6.35	50u"/1.27u GOLD
50006-3YYL	YYY	.188/4.78	50u"/1.27u GOLD
50006-3YYP	YYY	.470/11.94	50u"/1.27u GOLD
50006-5YYYA	YYY	.177/4.50	30u"/.76u GXT
50006-5YYALF	YYY	.177/4.50	30u"/.76u GXT
50006-5YYC	YYY	.533/13.54	30u"/.76u GXT
50006-5YYCLF	YYY	.533/13.54	30u"/.76u GXT
50006-5YYD	YYY	.733/18.62	30u"/.76u GXT
50006-5YYDLF	YYY	.733/18.62	30u"/.76u GXT
50006-5YYG	YYY	.250/6.35	30u"/.76u GXT
50006-5YYGLF	YYY	.250/6.35	30u"/.76u GXT
50006-5YYL	YYY	.188/4.78	30u"/.76u GXT
50006-5YYLLF	YYY	.188/4.78	30u"/.76u GXT
50006-5YYP	YYY	.470/11.94	30u"/.76u GXT
50006-5YYPLF	YYY	.470/11.94	30u"/.76u GXT
50006-XX010	150	SEE SHEET 4	30u"/.76u GXT
50006-XX010LF	150	SEE SHEET 4	30u"/.76u GXT
50006-XX025	18	SEE SHEET 5	30u"/.76u GXT
50006-XX025LF	18	SEE SHEET 5	30u"/.76u GXT
50006-XX027	96	SEE SHEET 6	30u"/.76u GOLD
50006-XX027LF	96	SEE SHEET 6	30u"/.76u GXT
50006-XX028	30	SEE SHEET 7	30u"/.76u GOLD
50006-XX028LF	30	SEE SHEET 7	30u"/.76u GXT
50006-XX045	180	SEE SHEET 8	30u"/.76u GXT
50006-XX045LF	180	SEE SHEET 8	30u"/.76u GXT
50006-XX049	96	SEE SHEET 9	30u"/.76u GOLD
50006-XX049LF	96	SEE SHEET 9	30u"/.76u GXT
50006-XX053	150	SEE SHEET 10	30u"/.76u GXT
50006-XX053LF	150	SEE SHEET 10	30u"/.76u GXT
50006-XX054	150	SEE SHEET 11	30u"/.76u GOLD
50006-XX054LF	150	SEE SHEET 11	30u"/.76u GXT
50006-XX055	30	SEE SHEET 12	30u"/.76u GOLD
50006-XX055LF	30	SEE SHEET 12	30u"/.76u GXT
50006-XX056	150	SEE SHEET 13	30u"/.76u GOLD
50006-XX056LF	150	SEE SHEET 13	30u"/.76u GXT
50006-XX057	150	SEE SHEET 14	30u"/.76u GOLD
50006-XX057LF	150	SEE SHEET 14	30u"/.76u GXT

mat'l. code SEE NOTE 3				surface ISO 1302 ✓	tolerance ISO 406 ISO 1101	projection 	product family HPC
ltr	ec	no	dr	date	tolerances unless otherwise specified	 INCH/MM scale 1:1	title
N					angles linear .XX±.01/.3		3 ROW VERTICAL HEADER
					0'±2' .XXX±.005/.13 .XXXX±.0020/.051		W/PRESS-FIT PINS, 0 G.P.
				dr	D.SHEAFER 3/14/91		dwg no
				enr	S.CLARK 3/14/91		sheet 3 of 14 size
				chr	S.CLARK 3/14/91		50006 A3
				appd	S.CLARK 3/14/91		type Product Customer Drawing
sheet index	revision sheet						

form: A3

PRODUCT NUMBER
50006-XX010
50006-XX010LF

FOR PRODUCT NUMBERS 50006-XX010 AND 50006-XX010LF ONLY



NOTES FOR 50006-XX010 AND 50006-XX010LF ONLY:

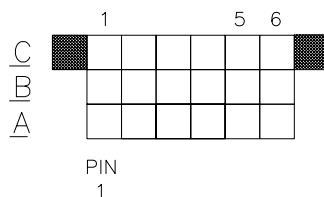
1. ALL POSITIONS ARE LOADED WITH "A" EXCEPT AS SHOWN.
2. COLUMN 1, ROW A IS DESIGNATED AS SIGNAL PIN 1, AS VIEWED FROM THE MATING FACE.
3. SIGNAL DATA FOR 50006-XX010 AND 50006-XX010LF:
SIZE 3 x 50
TOTAL NO. OF POSITIONS - 150
NO. OF POSITIONS LOADED - 150

ITEM KEY	QTY.	MATING LENGTH	TAIL LENGTH
A	136	.200 / 5.08	.177 / 4.50
B	12	.200 / 5.08	.533 / 13.54
C	2	.240 / 6.10	.177 / 4.50

mat'l. code				surface ISO 1302	tolerance ISO 406 ISO 1101	projection 1st angle	product family HPC
ltr	ecr	no	dr	date	tolerances unless otherwise specified	INCH/MM	title
N					linear .XX±.01/.3	scale 1:1	3 ROW VERTICAL HEADER W/PRESS-FIT PINS, 0 G.P.
					linear .XXX±.005/.13		dwg no
					linear .XXX±.0020/.05		sheet 4 of 14
					dr D.SHEAFER 3/14/91		size A3
					enr S.CLARK 3/14/91		
					chr S.CLARK 3/14/91		
					appd S.CLARK 3/14/91		
sheet index	revision	sheet					type Product Customer Drawing

PRODUCT NUMBER
50006-XX025
50006-XX025LF

FOR PRODUCT NUMBERS 50006-XX025 AND 50006-XX025LF ONLY



CUSTOMER NOTE: END GUIDE PINS ARE SUGGESTED IN YOUR APPLICATION TO PREVENT STUBBING OF THE .260/6.60 MATING LENGTH SIGNAL PINS.

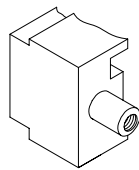
NOTES FOR 50006-XX025 AND 50006-XX025LF ONLY:

1. ALL POSITIONS ARE LOADED WITH "A" .
2. COLUMN 1, ROW A IS DESIGNATED AS SIGNAL PIN 1, AS VIEWED FROM THE MATING FACE.
3. SIGNAL DATA FOR 50006-XX025 AND 50006-XX025LF:
SIZE 3 x 6
TOTAL NO. OF POSITIONS - 18
NO. OF POSITIONS LOADED - 18

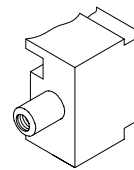
ITEM KEY	QTY.	MATING LENGTH	TAIL LENGTH
A	18	.260 / 6.60	.533 / 13.54

mat'l. code				surface ISO 1302 ✓	tolerance ISO 406 ISO 1101	projection 	product family HPC
ltr	ecn	no	dr	date	tolerances unless otherwise specified		title
N					angles	linear .XX±.01/.3	3 ROW VERTICAL HEADER
						.XXX±.005/.13	W/PRESS-FIT PINS, 0 G.P.
					0'±2'	.XXX±.0020/.051	scale 1:1
			dr	D.SHEAFER	3/14/91		dwg no
			enr	S.CLARK	3/14/91		sheet 5 of 14
			chr	S.CLARK	3/14/91		size A3
			appd	S.CLARK	3/14/91		type Product Customer Drawing
sheet index	revision sheet						

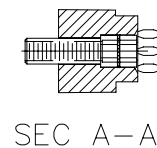
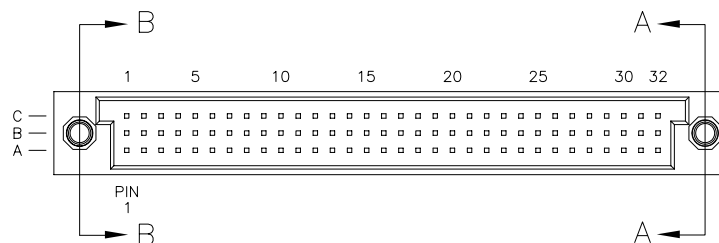
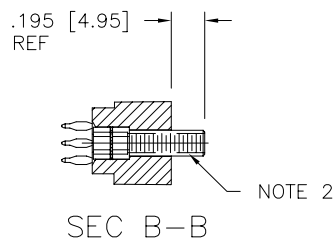
PRODUCT NUMBER
50006-XX027
50006-XX027LF



L.E.



R.E.



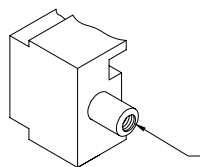
FOR PRODUCT NUMBERS 50006-XX027 AND 50006-XX027LF

NOTES:

1. IDENTICAL TO P/N 50006-1096A EXCEPT AS SHOWN W/JACK SCREW INSERTS INSTALLED ON BOTH ENDS.
2. HARDWARE P/N 95729-001.

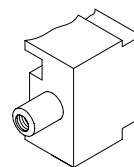
mat'l. code				surface ISO 1302 ✓	tolerance ISO 406 ISO 1101	projection INCH/MM	product family HPC
ltr	ecr	no	dr	date	tolerances unless otherwise specified		title
N					angles linear .XX±.01/.3		3 ROW VERTICAL HEADER
					0'±2' .XXX±.005/.13		W/PRESS-FIT PINS, 0 G.P.
					.XXX±.0020/.051		scale 1:1
			dr	D.SHEAFER	3/14/91		dwg no
			enr	S.CLARK	3/14/91		sheet 6 of 14
			chr	S.CLARK	3/14/91		size A3
			appd	S.CLARK	3/14/91		type Product Customer Drawing
sheet index	revision sheet						

PRODUCT NUMBER
50006-XX028
50006-XX028LF

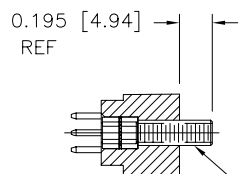


#4-40 UNC-2B THREAD

L.E.

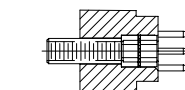
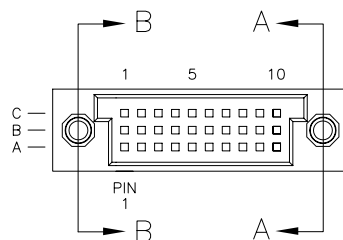


R.E.



SEC B-B

NOTE 2



SEC A-A

FOR PRODUCT NUMBERS 50006-XX028 AND 50006-XX028LF

NOTES:

1. IDENTICAL TO P/N 50006-1030A EXCEPT AS SHOWN W/JACK SCREW INSERTS INSTALLED ON BOTH ENDS.
2. HARDWARE P/N 95729-001.

mat'l. code				surface ISO 1302	tolerance ISO 406 ISO 1101	projection INCH/MM	product family HPC
ltr	ecn no	dr	date	tolerances unless otherwise specified			title
N				angles	linear	.XX±.01/.3	3 ROW VERTICAL HEADER
						.XXX±.005/.13	W/PRESS-FIT PINS, 0 G.P.
				0°±2'		.XXX±.0020/.05	scale 1:1
		dr	D.SHEAFER	3/14/91			dwg no
		enr	S.CLARK	3/14/91			sheet 7 of 14
		chr	S.CLARK	3/14/91			size
		appd	S.CLARK	3/14/91			A3
sheet	revision						type
index	sheet						Product Customer Drawing

Diagram of a 1D lattice with 12 sites. Sites 1, 3, 4, and 5 are occupied by particles. Site 3 is highlighted with a thick vertical line. The lattice is labeled with 1, 2, 3, 4, and 5 above the corresponding sites.

6

A

1

A

B

FCIconnect.com

C

- C

Copyright FCID

1	2	3	4	5	6
---	---	---	---	---	---

Printed: May 13, 2008

PRODUCT NUMBER
50006-XX049
50006-XX049LF

FOR PRODUCT NUMBER 50006-XX049 AND 50006-XX049LF ONLY

	1		5		10		15		20		25		30		32	
C	B		B		B		B		B		B		B		B	C
B	B		B		B		B		B		B		B		B	
A	B		B		B		B		B		B		B		B	

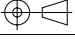
PIN
1

CUSTOMER NOTE: END GUIDE PINS ARE SUGGESTED IN YOUR APPLICATION TO PREVENT STUBBING OF THE .260/6.60 MATING LENGTH SIGNAL PINS.

NOTES FOR 50006-XX049 AND 50006-XX049LF ONLY:

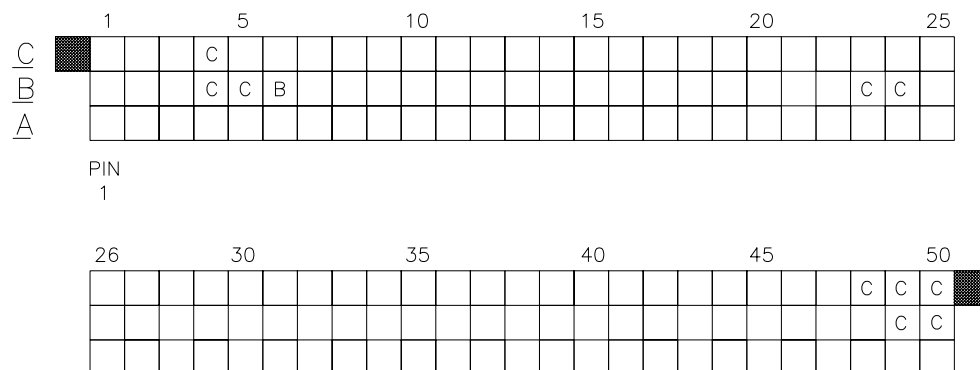
- ALL POSITIONS ARE LOADED WITH "A" EXCEPT AS SHOWN.
- COLUMN 1, ROW A IS DESIGNATED AS SIGNAL PIN 1, AS VIEWED FROM THE MATING FACE.
- SIGNAL DATA FOR 50006-XX049 AND 50006-XX049LF:
SIZE 3 x 32
TOTAL NO. OF POSITIONS - 96
NO. OF POSITIONS LOADED - 96

ITEM KEY	QTY.	MATING LENGTH	TAIL LENGTH
A	62	.220 / 5.59	.177 / 4.50
B	33	.260 / 6.60	.177 / 4.50
C	1	.180 / 4.57	.177 / 4.50

mat'l. code				surface ISO 1302	tolerance ISO 406 ISO 1101	projection 	product family HPC
ltr	ecn	no	dr	date	tolerances unless otherwise specified	INCH/MM	title
N					angles linear .XX±.01/.3	scale 1:1	3 ROW VERTICAL HEADER
					0'±2' .XXX±.005/.13		W/PRESS-FIT PINS, 0 G.P.
					.XXX±.0020/.051		dwg no
			dr	D.SHEAFER	3/14/91		sheet 9 of 14
			enr	S.CLARK	3/14/91		size
			chr	S.CLARK	3/14/91		A3
			appd	S.CLARK	3/14/91		type
sheet	revision						Product Customer Drawing
index	sheet						

PRODUCT NUMBER
50006-XX053
50006-XX053LF

FOR PRODUCT NUMBERS 50006-XX053 AND 50006-XX053LF ONLY



CUSTOMER NOTE: END GUIDE PINS ARE SUGGESTED IN YOUR APPLICATION TO PREVENT STUBBING OF THE .260 MATING LENGTH SIGNAL PINS.

- ALL POSITIONS ARE LOADED WITH "A" EXCEPT AS SHOWN.
- COLUMN 1, ROW A IS DESIGNATED AS SIGNAL PIN 1, AS VIEWED FROM THE MATING FACE.
- SIGNAL DATA FOR 50006-XX053 AND 50006-XX053LF:
SIZE 3 x 50
TOTAL NO. OF POSITIONS - 150
NO. OF POSITIONS LOADED - 150

ITEM KEY	QTY.	MATING LENGTH	TAIL LENGTH
A	139	.220 / 5.59	.250 / 6.35
B	1	.180 / 4.57	.250 / 6.35
C	10	.260 / 6.60	.250 / 6.35

mat'l. code				surface ISO 1302	tolerance ISO 406 ISO 1101	projection 	product family HPC
ltr	ecn	no	dr	date	tolerances unless otherwise specified	INCH/MM	title
N					angles linear .XX±.01/.3	scale 1:1	3 ROW VERTICAL HEADER
					0'±2' .XXX±.005/.13		W/PRESS-FIT PINS, 0 G.P.
					.XXX±.0020/.05		dwg no
				dr	D.SHEAFER 3/14/91		sheet 0 of 14 size
				enr	S.CLARK 3/14/91		50006 A3
				chr	S.CLARK 3/14/91		type
				appd	S.CLARK 3/14/91		Product Customer Drawing
sheet index	revision	sheet					

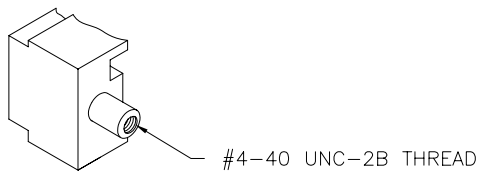
A number line from 1 to 6. Between 2 and 3, there is a grid of 10 equal-width boxes. A thick vertical line is drawn at the 5th box (representing 2.5), and a thin vertical line is drawn at the 10th box (representing 3.5).

[illegible][illegible]

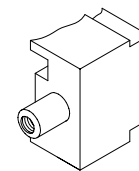
1. ALL POSITIONS ARE LOADED WITH "A" EXCEPT AS SHOWN.
2. COLUMN 1, ROW A IS DESIGNATED AS SIGNAL PIN 1, AS VIEWED FROM THE MATING FACE.
3. SIGNAL DATA FOR 50006-XX054 AND 50006-XX054LF:
SIZE 3 x 50
TOTAL NO. OF POSITIONS - 150
NO. OF POSITIONS LOADED - 150

Copyright FCID

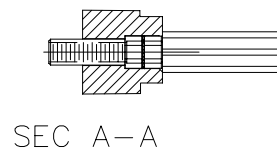
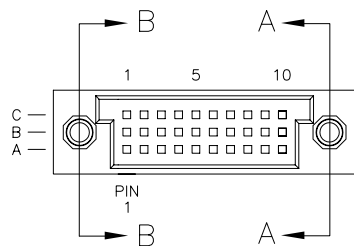
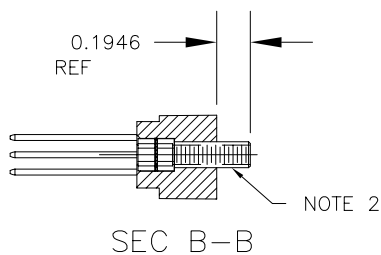
PRODUCT NUMBER
50006-XX055
50006-XX055LF



L.E.



R.E.



FOR PRODUCT NUMBERS 50006-XX055 AND 50006-XX055LF

NOTES:

- IDENTICAL TO P/N 50006-1030D EXCEPT AS SHOWN W/JACK SCREW INSERTS INSTALLED ON BOTH ENDS.
- HARDWARE P/N 95729-001.

mat'l. code				surface ISO 1302	tolerance ISO 406 ISO 1101	projection INCH/MM	product family HPC
ltr	ecn	no	dr	date	tolerances unless otherwise specified		title
N					angles linear .XX±.01/.3	INCH/MM	3 ROW VERTICAL HEADER
					0'±2'	scale 1:1	W/PRESS-FIT PINS, 0 G.P.
			dr	D.SHEAFER	3/14/91	FCI	dwg no
			enr	S.CLARK	3/14/91		sheet 2 of 14
			chr	S.CLARK	3/14/91		size
			appd	S.CLARK	3/14/91		A3
sheet index	revision sheet						type Product Customer Drawing

A horizontal number line is shown with tick marks at 1, 2, 3, 4, 5, and 6. Between the tick marks for 2 and 3, there is a grid of 10 equal-width squares. A thick vertical line is drawn at the midpoint between 2 and 3, which corresponds to 2.5. A thin vertical line is drawn at the midpoint between 3 and 4, which corresponds to 3.5.

	1	5	10	15	20	25
C			C			
B			C	C	B	
A						

26				30				35				40				45				50			
																					C		
																					C	C	



- | | | |
|---|-------------------------------|---|
| C | NO. OF POSITIONS LOADED = 150 | C |
|---|-------------------------------|---|

Copyright FCI[illegible]

[illegible]

PIN

1

26				30				35				40				45				50				
																							C	
	D			D																			C	C
D	D	D	D	D	D	D	D	D	D	D	D	D	D	D	D									

1. ALL POSITIONS ARE LOADED WITH "A" EXCEPT AS SHOWN.
2. COLUMN 1, ROW A IS DESIGNATED AS SIGNAL PIN 1, AS VIEWED FROM THE MATING FACE.
3. SIGNAL DATA FOR 50006-XX057 AND 50006-XX057LF:
SIZE 3 x 50
TOTAL NO. OF POSITIONS - 150
NO. OF POSITIONS LOADED - 150

ITEM KEY	QTY.	MATING LENGTH	TAIL LENGTH
A	101	.220 / 5.59	.561 / 14.25
B	1	.180 / 4.57	.521 / 13.23
C	8	.260 / 6.60	.601 / 15.27
D	40	.220 / 5.59	.177 / 4.50

form: A3