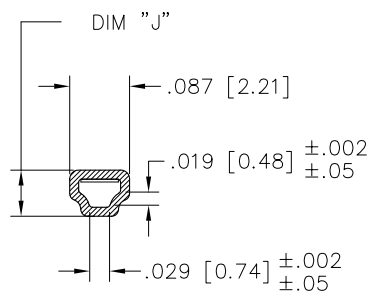
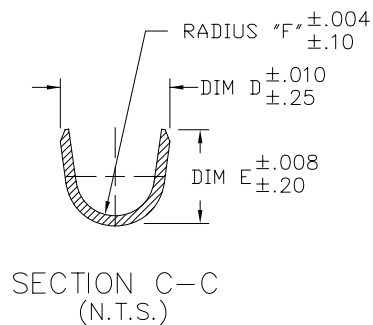
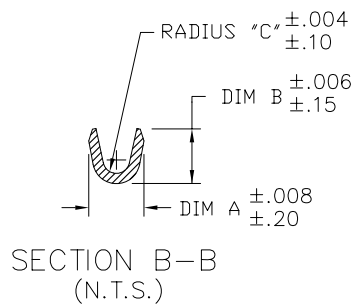


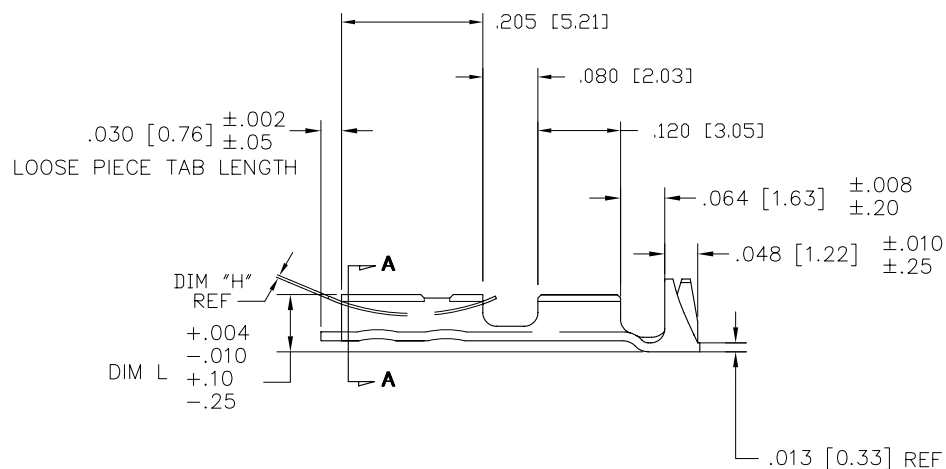
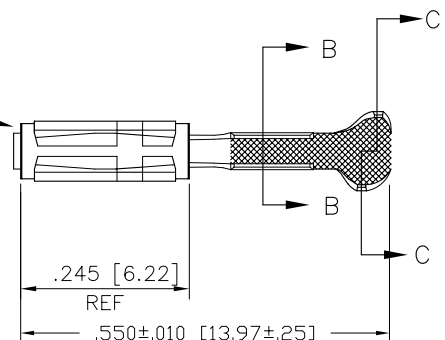
PRODUCT NUMBER
SEE TABLE



SECTION A-A



SIDES OF SPRING MAY NOT
EXTEND BEYOND SIDE OF
TERMINAL MORE THAN .004/.10



mat'l. code				surface	tolerance	projection	product family			
SEE TABLE				✓			PV TERMINALS			
ltr	ec'n no	dr	date	tolerances unless otherwise specified		INCH/MM scale 4:1	title			
AA	V08-0113	HTB	2008-03-28	angles	linear		MAXI PV™ RECEPTACLE			
U	V71684	HTB	1997-12-17				CRIMP TO WIRE			
V	V05-0468	HTB	2005-05-27	dr	T. BREWBAKER	2006-04-18	FCI	dwg no		sheet 1 of 3
W	V06-0218	HTB	2006-03-07	engr	T. BREWBAKER	2006-04-18		46220		size A3
X	V06-0303	HTB	2006-04-18	chr	T. BREWBAKER	2006-04-18		type		Product Customer Drawing
Y	V07-0218	HTB	2007-03-16	appd	T. BREWBAKER	2006-04-18				
sheet	revision	AA	AA	AA						
index	sheet	1	2	3						



Copyright FCI

form A3

PRODUCT NUMBER		AWG RANGE	MATERIAL AND PLATING		SPRING THICKNESS		BODY					
REELED	LOOSE PC.				DIM H		DIM J		DIM L			
			BODY : 1/4 HD BRASS		SPRING : BE-CU HEAT TREATED		ENGLISH	METRIC	ENGLISH	METRIC	ENGLISH	METRIC
46220-000	46224-000	18-20	OBS.		OBSOLETE		OBSOLETE					
46230-000	46234-000	22-26	OBS.									
46240-000	46244-000	28-32	OBS.									
46221-000LF	46225-000LF	18-20	40u" MIN GOLD OVER		GOLD FLASH		0.0058	0.147	0.067	1.70	0.083	2.11
46231-000LF	46235-000LF	22-26	50u" MIN NICKLE Ni				0.0058	0.147	0.067	1.70	0.083	2.11
46241-000	46245-000	28-32	OBS. CONTACT AREA (NOTE 4)				OBSOLETE					
46222-000LF	47418-000LF	18-20	75u" MIN GOLD OVER		GOLD FLASH		0.0075	0.191	0.067	1.70	0.083	2.11
46232-000LF	47419-000LF	22-26	50u" MIN NICKLE Ni				0.0075	0.191	0.067	1.70	0.083	2.11
46242-000	47420-000	28-32	OBS. CONTACT AREA (NOTE 4)				OBSOLETE					
46223-000LF	47387-000LF	18-20	40u" MIN GOLD OVER		GOLD FLASH		0.0075	0.191	0.067	1.70	0.083	2.11
46233-000LF	47384-000LF	22-26	50u" MIN NICKLE Ni				0.0075	0.191	0.067	1.70	0.083	2.11
46243-000	47403-000	28-32	OBS. CONTACT AREA (NOTE 4)				OBSOLETE					
46226-000LF	46227-000LF	18-20	40u" MIN GOLD OVER		GOLD FLASH		0.0048	0.122	0.067	1.70	0.083	2.11
46236-000LF	46237-000LF	22-26	50u" MIN NICKLE Ni				0.0048	0.122	0.067	1.70	0.083	2.11
46246-000	46247-000	28-32	OBS. CONTACT AREA (NOTE 4)				OBSOLETE					
46228-000	46229-000	18-20	OBS.		OBSOLETE		OBSOLETE					
46238-000	46239-000	22-26	OBS.									
46248-000	46249-000	28-32	OBS.									
46580-000	46581-000	18-20	OBS.		OBSOLETE		OBSOLETE					
46590-000	46591-000	22-26	OBS.									
46600-000	46601-000	28-32	OBS.									
47388-000	47391-000	18-20	OBS.		OBSOLETE		OBSOLETE					
47389-000	47392-000	22-26	OBS.									
47390-000	47393-000	28-32	OBS.									
47612-000			OBS.		OBSOLETE		OBSOLETE					
47613-000			OBS.									
47614-000			OBS.									
47621-000			OBS.		OBSOLETE		OBSOLETE					
47622-000			OBS.									
47653-000			OBS.									
47733-000			OBS.		OBSOLETE		OBSOLETE					
47734-000			OBS.									
47735-000			OBS.									
47736-000	46582-000	18-20	OBS.		OBSOLETE		OBSOLETE					
47737-000	46592-000	22-26	OBS.									
47738-000	46602-000	28-32	OBS.									
48188-000	48189-000	22-26	OBS.		OBSOLETE		OBSOLETE					

SEE SHEET 3 FOR PRODUCTS WITH LEAD-FREE TIN PLATING.

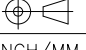
mat'l. code SEE TABLE				surface <input checked="" type="checkbox"/> tolerance		projection		product family PV TERMINALS	
ltr	ecn no	dr	date	tolerances unless otherwise specified		 INCH/MM scale 1:1		title	
AA				angles	linear			MAXI PV™ RECEPTACLE CRIMP TO WIRE	
				dr	T. BREWBAKER	2006-04-18		dwg no	sheet 2 of 3
				engr	T. BREWBAKER	2006-04-18		46220	A3
				chr	T. BREWBAKER	2006-04-18			
				appd	T. BREWBAKER	2006-04-18			
sheet index	revision sheet							type Product Customer Drawing	

PRODUCT NUMBER		AWG RANGE	MATERIAL AND PLATING		SPRING THICKNESS		BODY			
REELED	LOOSE PC.		BODY : 1/4 HD BRASS		SPRING : BE-CU HEAT TREATED		DIM H		DIM J	
							ENGLISH	METRIC	ENGLISH	METRIC
46580-000LF	46581-000LF	18-20	HOT DIPPED TIN (NOTE 7)	TIN PLATED			0.0075	0.191	0.067	1.70
46590-000LF	46591-000LF	22-26					0.0075	0.191	0.067	1.70
46600-000LF	46601-000LF	28-32					0.0075	0.191	0.067	1.70
47388-000LF	47391-000LF	18-20	HOT DIPPED TIN (NOTE 7)	TIN PLATED			0.0058	0.147	0.067	1.70
47389-000LF	47392-000LF	22-26					0.0058	0.147	0.067	1.70
47390-000LF	47393-000LF	28-32					0.0058	0.147	0.067	1.70
47736-000LF	46582-000LF	18-20	HOT DIPPED TIN (NOTE 7)	TIN PLATED			0.0048	0.122	0.067	1.70
47737-000LF	46592-000LF	22-26					0.0048	0.122	0.067	1.70
47738-000LF	46602-000LF	28-32					0.0048	0.122	0.067	1.70

AWG RANGE	WIRE BARREL						INSULATION BARREL									
	DIM A		DIM B		DIM C		INSULATION DIA. RANGE FOR DISCRETE TERMINALS		INSULATION DIA. RANGE WHEN USED WITH MAXI LATCH HSG.		DIM D		DIM E		DIM F	
	ENGLISH	METRIC	ENGLISH	METRIC	ENGLISH	METRIC	ENGLISH	METRIC	ENGLISH	METRIC	ENGLISH	METRIC	ENGLISH	METRIC	ENGLISH	METRIC
18-20	0.110	2.79	0.110	2.79	0.021	0.53	0.042 - 0.103	1.07 - 2.62	0.042 - 0.060	1.07 - 1.52	0.139	3.53	0.123	3.12	0.050	1.27
22-26	0.070	1.78	0.070	1.78	0.017	0.43	0.036 - 0.103	0.91 - 2.62	0.036 - 0.060	0.91 - 1.52	0.139	3.53	0.123	3.12	0.050	1.27
28-30	0.054	1.37	0.058	1.47	0.011	0.28	0.028 - 0.054	0.71 - 1.37	0.028 - 0.054	0.71 - 1.37	0.115	2.92	0.110	2.79	0.040	1.02

NOTES:

- FOR DIMENSIONS OF WIRE BARREL AND INSULATION BARREL SEE TABLE.
- PART TO MATE WITH .025±.002 [0.64±0.05] SQ. PIN.
- APPLICABLE SPECIFICATIONS:
 - BUS-12-096 : PRODUCT SPECIFICATION
 - TA-213 : CRIMP SPECIFICATION FOR TERMINALS USED WITH MAXI-LATCH HOUSINGS.
 - TA-356 : CRIMP SPECIFICATION FOR CONTACTS NOT USED IN HOUSINGS.
- FINISH TO BE AS SPECIFIED IN CONTACT AREA. REMAINDER OF PART TO BE GOLD FLASH.
- PRODUCT MEETS EUROPEAN UNION DIRECTIVES AND OTHER COUNTRY REGULATIONS AS DESCRIBED IN GS-22-008.
- THIS PRODUCT IS NOT INTENDED TO BE EXPOSED TO MANUFACTURING SOLDER PROCESSES.
- THIS PRODUCT HAS 100% TIN PLATING IN THE INTERFACE AND HAS NOT BEEN TESTED FOR WHISKER GROWTH IN ALL INTERCONNECT ENVIRONMENTS.

mat'l. code SEE TABLE				surface <input checked="" type="checkbox"/> tolerance		projection 		product family PV TERMINALS	
ltr	ec'n no	dr	date	tolerances unless otherwise specified		INCH/MM		title	
AA				angles	linear	.XX±.01/.X±.3 .XXX±.005/.XX±.13 .XXXX±.0020/.XXX±.051		MAXI PV™ RECEPTACLE CRIMP TO WIRE	
				dr T. BREWBAKER 2006-04-18		scale 1:1		dwg no	
				engr T. BREWBAKER 2006-04-18		FCI		sheet 3 of 3	
				chr T. BREWBAKER 2006-04-18				size A3	
				appd T. BREWBAKER 2006-04-18				type Product Customer Drawing	
sheet index	revision sheet								