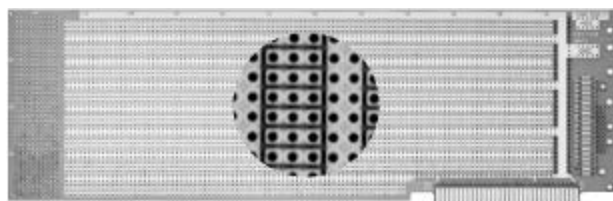


IBM PC, XT

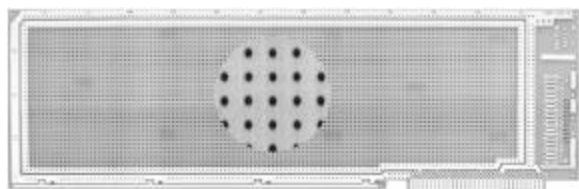
**4613**

Circuit Pattern:
Contacts:
Width/Thick:
Height:
16-Pin DIP Capacity:
Material:
V/G Terminals:
Socket Pins:
Extender:
Hole Diameter:

IBM PC, XT

3-Hole Solder Pad
 31/62 @ .1" Ctrs
 Ni/Gold
 13.25"/.062"
 4.2"
 93
 FR4 Epoxy Glass
 T44, T46, T49, T68
 R32
 3690-26
 .042"

•3-Hole Solder Pads (0.28" x 0.080"0 for interconnecting multiple component leads
 •I/O mounting area for 37-pin D-subminiature and ribbon cable connectors
 •Mounting Bracket and hardware kit included (HD36B)
 •Layout paper and instructions included

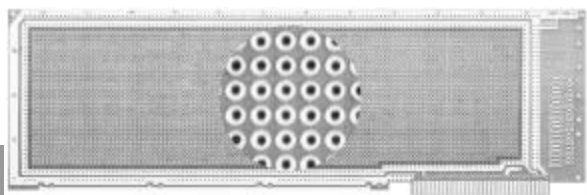
**4613-1**

Circuit Pattern:
Contacts:
Width/Thick:
Height:
16-Pin DIP Capacity:
Material:
V/G Terminals:
Socket Pins:
Extender:
Hole Diameter:

IBM PC, XT

Peripheral Buses
 31/62 @ .1" Ctrs
 Ni/Gold
 13.25"/.062"
 4.2"
 93
 FR4 Epoxy Glass
 T44, T46, T49, T68
 R32
 3690-26
 .042"

•Voltage and ground buses around board perimeter, both sides
 •Auxiliary bus line along lower edge of board, both sides
 •I/O mounting area for 37-pin D-subminiature and ribbon cable connectors
 •Mounting Bracket and hardware kit included (HD36B)
 •Layout paper and instructions included

**4613-3**

Circuit Pattern:
Contacts:
Width/Thick:
Height:
16-Pin DIP Capacity:
Material:
V/G Terminals:
Socket Pins:
Extender:
Hole Diameter:

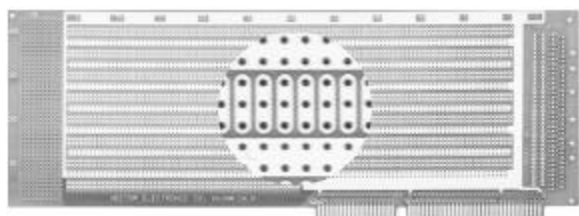
IBM PC, XT

Pad-Per-Hole
 31/62 @ .1" Ctrs
 Ni/Gold
 13.25"/.062"
 4.2"
 154
 FR4 Epoxy Glass
 T44, T46, T49, T68
 R32
 3690-26
 .042"

•Plated-thru holes
 •Voltage and ground buses around board perimeter
 •I/O mounting area for 37-pin D-subminiature and ribbon cable connectors
 •Mounting Bracket and hardware kit included (HD36B)

Vectorbord

IBM AT/ISA

**4617**

Circuit Pattern:
Contacts:
Width/Thick:
Height:
16-Pin DIP Capacity:
Material:
V/G Terminals:
Socket Pins:
Extender:
Hole Diameter:

IBM AT/ISA

3-hole Solder Pad
 98 @ .1" Ctrs
 Ni/Gold
 13.25"/.062"
 4.5"
 44
 FR4 Epoxy Glass
 T44, T46, T49, T68
 R32
 3690-26, 3690-26-1
 .042"

•3-Hole Solder Pads (0.28" x 0.080"0 for interconnecting multiple component leads
 •10 x 42 hole grid unrestricted component placement area
 •I/O mounting area for 37-pin D-subminiature and ribbon cable connectors
 •Mounting Bracket and hardware kit included (HD36B)
 •Layout paper and instructions included
 •Row and column legends provided