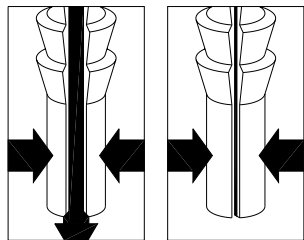


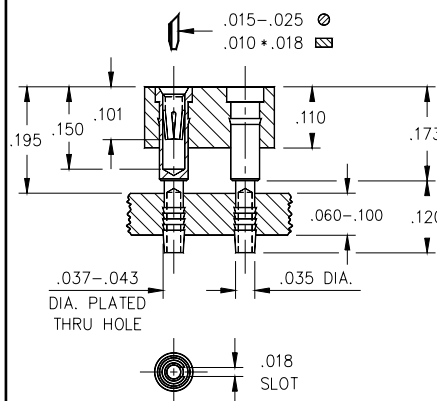
- Compliant tail solderless press-fit: M-M# 4612 or 4613 pins. Use series 446...012 for .060-.120" thick boards, and series 446...013 for .090-.130" boards. See page 131 for details.
- Compliant tail receptacles can be inserted and removed without degradation of the plated-thru-hole.
- Hi-Rel, 4-finger #30 BeCu contact is rated at 3 amps. See page 208 for details.



### APPLICATION OF COMPLIANT TAIL PINS

Mill-Max's patented\* compliant tail features precision machined pins that are hollow and slotted to conform to a .040"  $\pm$  .003" diameter PTH. As the pin is inserted, the slot compresses to fit the PTH, thus avoiding damage (see illustration at left). The pin's tail has fine serrations that form a perfect "gas tight" connection that doesn't require soldering. And since the pin doesn't damage the hole, compliant tail sockets and connectors can be easily replaced.

\*Patent No. 4,799,904.



**Fig. 1**

### Ordering Information

**Fig. 1**

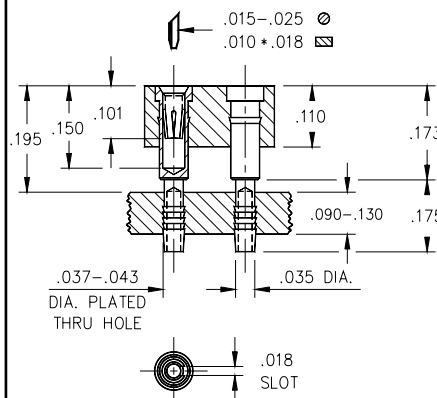
#### Series 446...012

446-XX-2\_\_-41-012  
Specify # of pins  $\rightarrow$  02-64

**Fig. 2**

#### Series 446...013

446-XX-2\_\_-41-013  
Specify # of pins  $\rightarrow$  02-64



**Fig. 2**

**XX= Plating Code**  
**See Below**

SPECIFY PLATING CODE XX=	13		93	99
Sleeve (Pin)	10 $\mu$ " Au		200 $\mu$ " Sn/Pb	200 $\mu$ " Sn/Pb
Contact (Clip)	30 $\mu$ " Au		30 $\mu$ " Au	200 $\mu$ " Sn/Pb