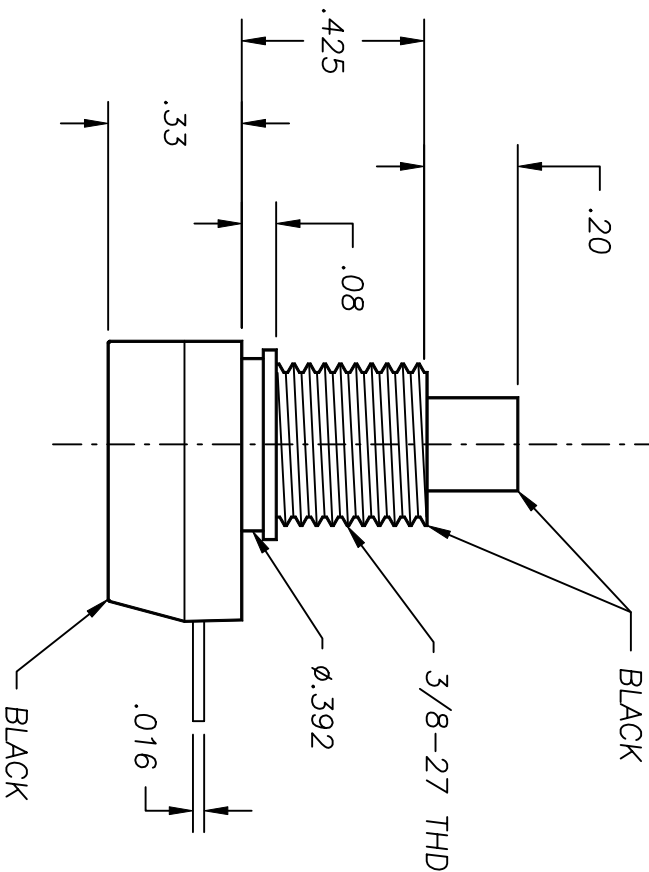
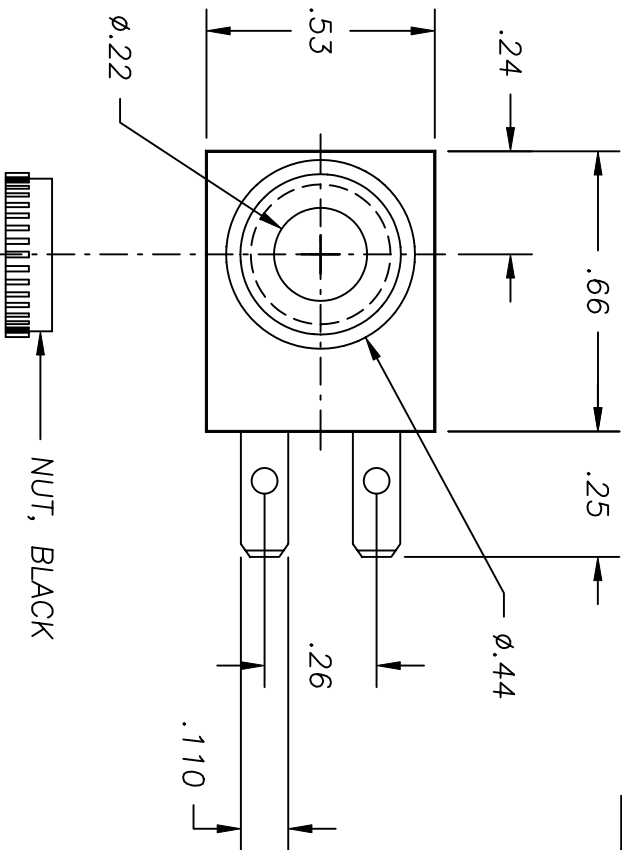


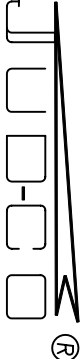
LTR	EN	DESCRIPTION	APPR	BY	DATE
A	-	INITIAL RELEASE	RB	EM	09-19-06
A1	-	ADDED ELECTRICAL RATING ON SWITCH DESCRIPTION.	RB	DC	11-06-06



JUDCO INVENTORY NO. 40-4532-00
SWITCH TYPE: PUSH ON-PUSH OFF, SPST
ELECTRICAL RATING: 14 VDC, 10A, NON-UL
NUT PACKED SEPARATELY

CUSTOMER: DIGI-KEY
CUSTOMER PN: TBD

APPROVED BY: _____
DATE: _____

DIMENSIONS IN INCHES DIMENSIONS ARE REFERENCE		 HARBOR CITY CALIFORNIA	
DRAWN: EM	09-19-06	TITLE	OUTLINE
APPR: KJ	09-19-06	J-188A-1 W/STR TRMS	
1415U1030A.DWG		DWG. NO.	1415-1030
SHEET		1 OF 1	