

IEC appliance inlet C8, snap-in mounting, front side, solder terminal



Snap-In Version

**Description**

- Panel Mount:  
Snap-in version, from front side
- Appliance Inlet, Pin temperature 70 °C, Protection class II
- PCB

**Approvals**

- VDE License Number: 40017311
- UL License Number: E96454
- CSA License Number: 73165

**Weblinks**

[Approvals](#), [RoHS](#), [CHINA-RoHS](#), [e-Store](#), [SCHURTER-Stock-Check](#), [Distributor-Stock-Check](#)

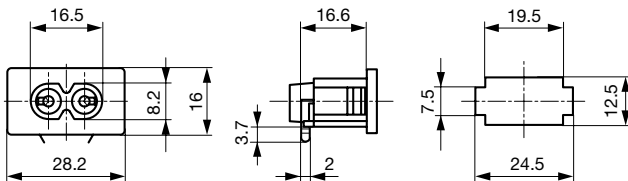
**Technical Data**

Ratings IEC	2.5 A / 250 VAC; 50 Hz
Ratings UL/CSA	2.5 A / 250 VAC; 60 Hz
Dielectric Strength	> 2 kVAC between L-N (1 min/50 Hz)
Allowable Operation Temp.	-25 °C to 70 °C
Degree of Protection	from front side IP 40 acc. to IEC 60529
Protection Class	Suitable for appliances with protection class II acc. to IEC 61140
Terminal	PCB solder terminals
Panel Thickness s	Snap-in from 0.8 - 1.2 mm
Material: Housing	Thermoplastic, black, UL 94V-0

Appliance-Inlet/-Outlet	C8 acc. to IEC/EN 60320-1, UL 498, CSA C22.2 no. 42 (for cold conditions) pin-temperature 70 °C, 2.5 A, Protection class II
-------------------------	---

**Dimensions**

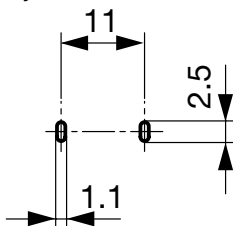
0721-PP

Length  28.2 mm

Solder terminals for PCB

## Drilling diagrams

PCB Layout



## Variants

[Distributor-Stock-Check](#) | [SCHURTER-Stock-Check](#) | [e-Store](#)

Type	Panel mounting	Panel Thickness s [mm]	Terminal	Order Number
0721-PP	Snap-in	0.8 - 1.2	PCB solder terminals	4300.0099

## Packaging unit

50 Pcs

## Mating Outlets/Connectors

Category / Description

Power Supply or Interconnection Cord



Power Cord with IEC Appliance Plug C7, straight 70°C	2510
Power Cord with IEC Appliance Plug C7, angled, 70°C	2511
Power Cord with IEC Appliance Plug C7, angled, 70°C	2514
Power Cord with IEC Appliance Plug C7, straight 70°C	4810
Power Cord with IEC Appliance Connector C7, Line Plug Continental Europe, 70°C	CS01.0121.150
Power Cord with IEC Appliance Connector C7, Line Plug North America, 70°C	CS01.0221.150
Power Cord with IEC Appliance Connector C7, Line Plug Switzerland, 70°C	CS01.0321.150
Power Cord with IEC Appliance Connector C7, Line Plug UK, 70°C	CS01.0421.150
	CS03.0421.150
	CS03.0521.150
	...