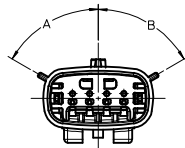
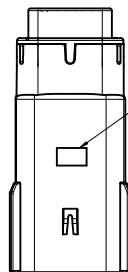


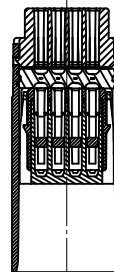
ASSEMBLY PART NUMBER	COLOR	KEYING OPTION	DIMENSIONS (DEGREES)		CAVITY TYPE & STAUS (X = PLUGGED)			
			A	B	1	2	3	4
33481-0401	BLACK	A	60	60				
33481-0402	LT. GRAY	B	30	60				
33481-0403	BROWN	C	60	30				
33481-0404	GREEN	D	30	30				
33481-0405	BLACK	C	60	30				
33481-0406	BLACK	A	60	60				X
33481-0407	LT. GRAY	B	30	60				X
33481-0408	BROWN	C	60	30				X
33481-0409	GREEN	D	30	30				X
33481-0410	CUSTOM	TBD						X
33481-0411	BLACK	A	60	60	X			X
33481-0412	LT. GRAY	B	30	60	X			X
33481-0413	BROWN	C	60	30	X			X
33481-0414	GREEN	D	30	30	X			X
33481-0415	CUSTOM	TBD			X			X
33481-0416	BLACK	A	60	60	X	X	X	X
33481-0417	LT. GRAY	B	30	60	X	X	X	X
33481-0418	BROWN	C	60	30	X	X	X	X
33481-0419	GREEN	D	30	30	X	X	X	X
33481-0420	CUSTOM	TBD			X	X	X	X
33481-0421	BLACK	A	60	60				X



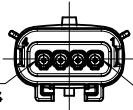
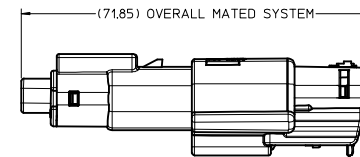
KEYING OPTION
SEE TABLE



OPTIONAL TRACEABILITY
INFORMATION LOCATED IN
THIS AREA



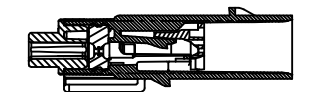
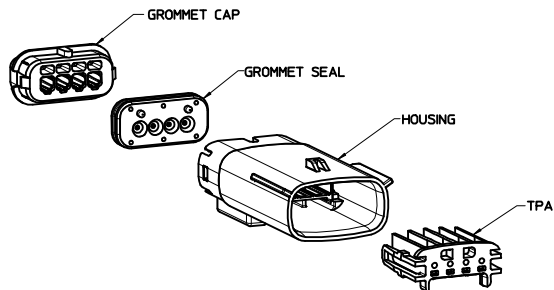
SECTION A-A



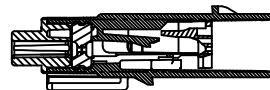
REAR VIEW
(WIRE HARNESS SIDE)



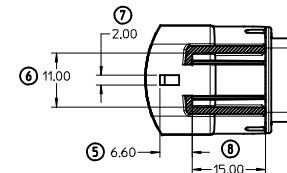
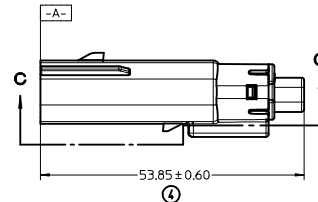
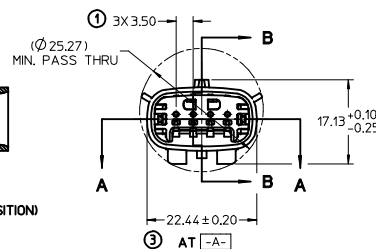
SCALE 1:1



SECTION B-B
(BLADE INSERT SHOWN IN FULL-LOCK POSITION)
SEE NOTE 2



SECTION D-D
(BLADE INSERT SHOWN IN PRE-LOCK POSITION)
SEE NOTE 2



SECTION C-C

NOTES: UNLESS OTHERWISE SPECIFIED

- DESIGNED TO MATE WITH RECEPTACLE HOUSING ASSEMBLY SPECIFIED IN MOLEX CHARTED DRAWING SD-33471-041.
- ASSEMBLY SHIPPED WITH BLADE INSERT IN PRE-LOCK POSITION (SEE SECTION D-D PRE-LOCK). UPON FULL TERMINAL ASSEMBLY, EACH BLADE INSERT MUST BE SNAPPED INTO ITS FINAL-LOCK POSITION.
- FOR BLADE TERMINALS TO BE USED WITH THIS ASSEMBLY, SEE DRAWING SD-33000-001.
- SYSTEM TO BE USED WITH WIRE WITHIN DIAMETER RANGE OF 1.5mm TO 2.5mm.
- MATERIAL: SPS/NYLON BLEND, 20% GLASS FILLED.
- NOGALES ASSEMBLIES SHALL CONFORM TO PACKAGING SPECIFICATION PK-30907-811. CHENGDU ASSEMBLIES SHALL CONFORM TO PACKAGING SPECIFICATION PK-31300-635
- SHALL CONFORM TO PRODUCT SPECIFICATION PS-33471-000.
- ASSEMBLY CONFORMS TO SAE/USCAR-2 REV 4 WITH THE FOLLOWING EXCEPTIONS: TERMINAL INSERTION FORCE FOR WIRE SIZE ABOVE 2.5mm NOT EXCEEDING 2.69mm SHALL NOT EXCEED 45 NEWTONS.

INSPECTION NUMBER LOG
LAST NUMBER USED: 8
ADDED:
REMOVED:

REDRAWN IEC NO: UAU2009-0657 2009/01/07 DRWNS/VERZYL 2009/01/12 CHYKOR/FF/THS 2009/01/12 APPROV/KOSHY 2009/01/13	QUALITY SYMBOLS	GENERAL TOLERANCES (UNLESS SPECIFIED)	DIMENSION STYLE	SCALE	DESIGN UNITS	THIRD ANGLE PROJECTION
	▽=0 ▽=0	mm INCH 4 PLACES ± --- ± --- 3 PLACES ± --- ± --- 2 PLACES ± 0.10 ± --- 1 PLACE ± 0.3 ± --- ANGULAR ± 3 °	MM ONLY DATE DMARCOUX 06-14-02 CHECKED BY DGRIFFIT 06-14-02 APPROVED BY FHOLUB 06-14-02	2:1	METRIC	MX150 STANDARD CONNECTOR BLADE 1 ROW HOUSING, SEALED, 4 WAY
	DRAFT WHERE APPLICABLE MUST REMAIN WITHIN DIMENSIONS	MATERIAL NO. SEE CHART	MOLEX INCORPORATED	DOCUMENT NO. SD-33481-041	SHEET NO. 1 OF 1	
	THIS DRAWING CONTAINS INFORMATION THAT IS PROPRIETARY TO MOLEX INCORPORATED AND SHOULD NOT BE USED WITHOUT WRITTEN PERMISSION					