

# E-T-A® Three-position switch 3131

## Description

Single pole three-position switch with latching or momentary switch functions. Featuring a soft-touch contoured rocker actuator with optional illumination. The 3131 is sealed to provide IP66 rated front of panel water splash protection.

## Typical applications

Household appliances, electrical tools, mobile homes, watercraft, construction vehicles, medical equipment

## Ordering Information

Type number	
<b>3131</b>	Single pole switch (3 positions)
Function	
<b>B</b>	3-position switch single pole, switching function
<b>D</b>	3-position switch single pole, momentary switch function
<b>E</b>	latching switch under window 1, momentary switch under window 2
<b>F</b>	momentary switch under window 1, latching switch under window 2
Mounting	
<b>F</b>	flange mounting
Accessories	
<b>1</b>	with sealing IP66
Terminal design	
<b>N</b>	blade terminals 2x2.8x0.8 EN 60934
Characteristic curve	
<b>Q</b>	switch only,
Actuator style	
<b>0</b>	without actuator rocker X3131-W... must be ordered separately
Actuator colour	
<b>0</b>	without actuator
Rocker legends	
<b>00</b>	without
Rocker marking	
<b>0</b>	without
Orientation	
<b>0</b>	without
Illumination	
<b>0</b>	without
<b>2</b>	two LEDs, full illumination in position 1 and 2, dimmed illumination in position 0
Type of illumination	
<b>0</b>	without illumination
<b>T</b>	blue LED
<b>Y</b>	yellow LED
Illumination voltage range	
<b>0</b>	without illumination
<b>2</b>	10 - 14 V DC
<b>3</b>	20 - 32 V DC
Current ratings	
<b>20 A</b>	
<b>3131 - B F 1 N Q - 0 0 0 0 - 2 Y 3 - 20A</b> ordering example	

**NEW**



**3131**  
Three-position switch

## Technical data

For further details please see chapter: Technical Information

Voltage rating	DC 32 V
Current rating	20 A
Typical life	30,000 operations at 1 x I <sub>N</sub> , inductive
Ambient temperature	-20...+60 °C (-4...+140 °F)
Insulation co-ordination (IEC 60664)	2.5 kV/2 re-inforced insulation in the operating area
Dielectric strength	test voltage AC 3,000 V
operating area	test voltage AC 1,500 V
current path/current path	
Insulation resistance	> 100 MΩ (DC 500 V)
Protection class (IEC 60529)	operating area IP66 terminal area IP00
Vibration	5 g (57-500 Hz) ± 0.38 mm (10-57 Hz) test to IEC 60068-2-6, test Fc, 10 frequency cycles/axis
Shock	25 g (11 ms), test to IEC 60068-2-27, test Ea
Corrosion	96 hours at 5 % salt mist, test to IEC 60068-2-11, test Ka
Humidity	240 hours at 95 % RH, test to IEC 60068-2-78, test Cab
Mass	approx. 30 g

## Illumination voltage / power consumption

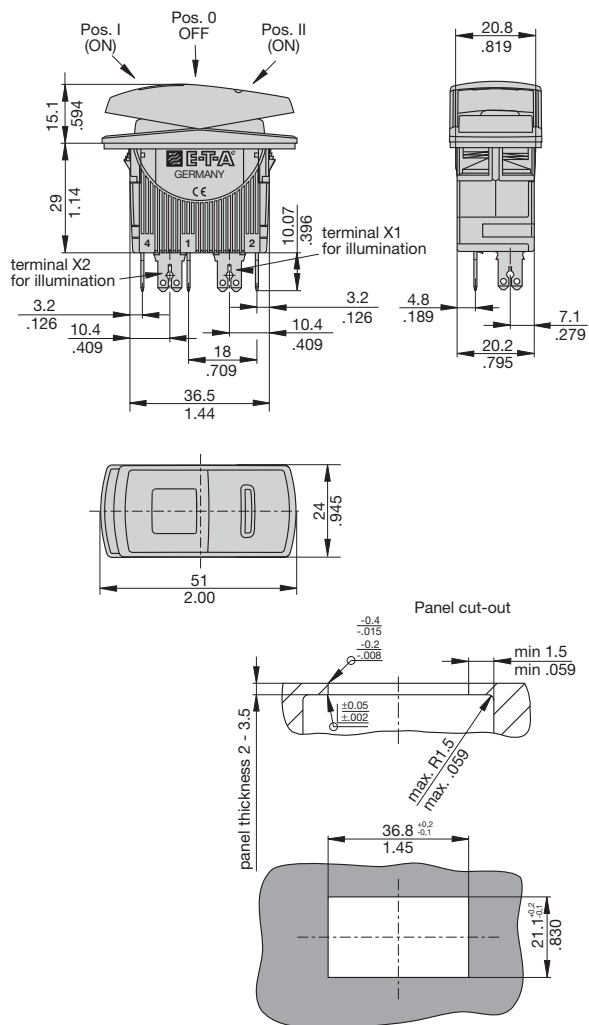
Operating voltage	Power consumption
	<b>LED</b>
12 V	10 mA
24 V	10 mA

## Approvals

### Authority

UL 1500 Ignition Protected

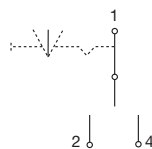
## Dimensions



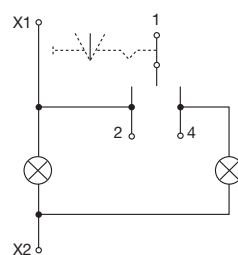
## Internal connection diagrams

### latching switch

#### without illumination

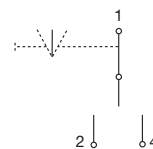


#### with illumination

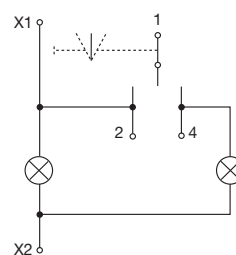


### momentary switch

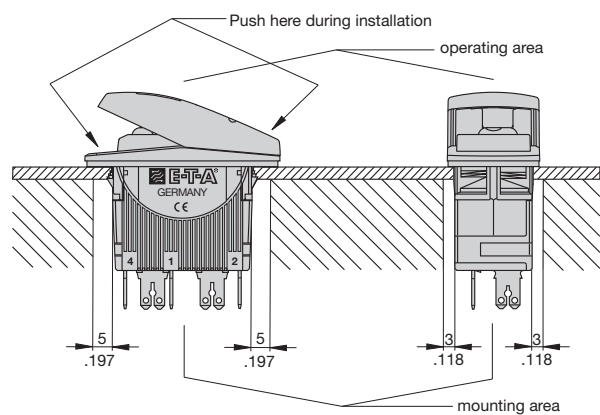
#### without illumination



#### with illumination









## Installation drawing



This is a metric design and millimeter dimensions take precedence ( $\frac{\text{mm}}{\text{inch}}$ )

## List of available legends

		Ordering information
Anchor		07
Windshield wiper		08
Bilge pump		09
Ventilation fan		12
Trim tabs		25
Mast lift		26
Further symbols upon request		

## Ordering Information X3131-...

### Type number

**X3131** module for type 3131

### Actuator style

**W** rocker soft-touch,  
two illumination windows

### Actuator colour

**A** blue / white translucent

**B** black / white translucent

**C** skyblue / white translucent

### Rocker legends

**00** without

... see separate survey of legends

### Rocker marking

**0** without

**B** I and II

**C** ◀ and ▶ (orientation 1 only)

### Orientation

**0** without orientation

**1** orientation 1 (standard)

**2** orientation 2

**3** orientation 3

**4** orientation 4

**X3131 - W A 07 0 1** ordering example

