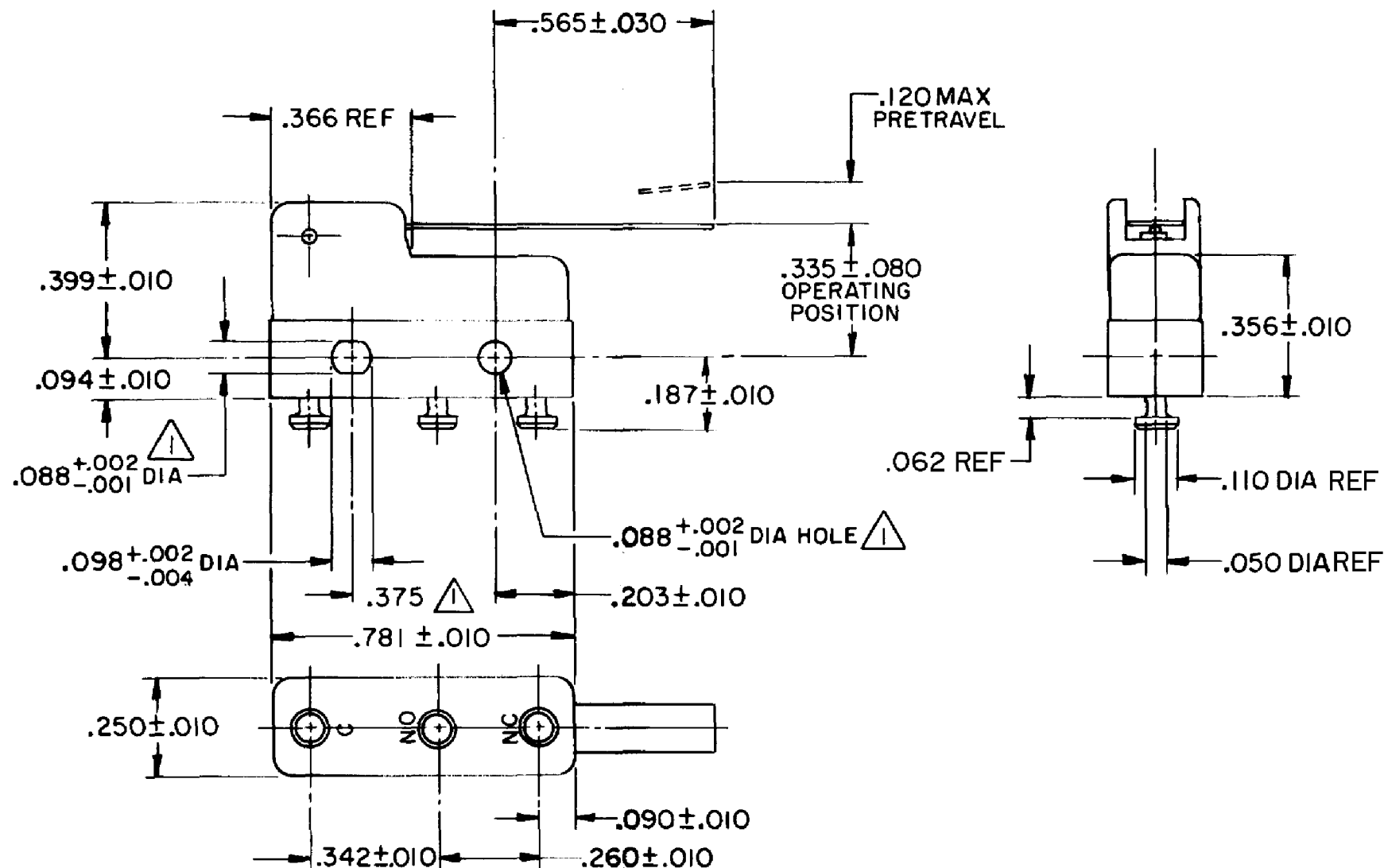
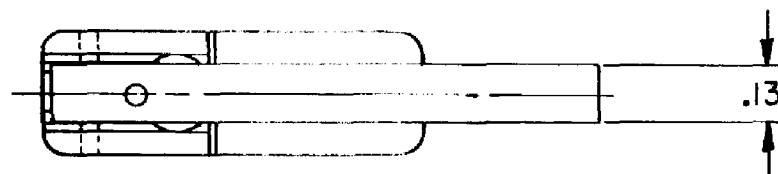


HONEYWELL  
PART NUMBER  
311SM702-T  
PRODUCT CODE  
TZA2682

REV	DOCUMENT	CHANGED BY	CHECK
9	0038445	SSK 21APR08	BLR



NOTES

- ▲ MOUNTING HOLES WILL ACCEPT PINS OR SCREWS OF .087 MAX DIA ON .375 ± .002 CENTERS
- 2- SWITCH WILL WITHSTAND TEMPERATURE OF 250°F
- 3- TERMINALS ARE PLATED FOR SOLDERING

RELEASE NO.	PR -1354
REPLACES	-

CHARACTERISTICS	
OPERATING FORCE --	12 GRAM MAX
RELEASE FORCE--	2 GRAM MIN
DIFFERENTIAL TRAVEL--	.015 MAX
OVERTRAVEL --	.026 MIN

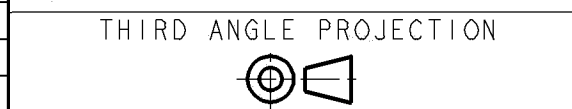
ELECTRICAL DATA		
CONTACT ARRANGEMENT SPDT		
30 VOLTS DC RATING		
	SEA LEVEL	50,000 FT
INDUCTIVE	3 AMP	2.5 AMP
RESISTIVE	5 AMP	5 AMP
MAXIMUM INRUSH 24 AMP		

DESIGN UNITS: INCH	
TOLERANCES UNLESS NOTED:	
NO PLACE	X ±
ONE PLACE	.X ±
TWO PLACE	.XX ±
THREE PLACE	.XXX ±
FOUR PLACE	.XXXX ±
ANGLES	±

DRAWN	VK	21FEB 08
CHECK	RJ	21FEB 08
THIS DRAWING COVERS A PROPRIETARY ITEM AND IS THE PROPERTY OF HONEYWELL. THIS DRAWING IS NOT TO BE COPIED OR USED WITHOUT THE PERMISSION OF HONEYWELL.		
INTERPRET PER ANSI Y14.5M-1982 OTHER HONEYWELL ENGINEERING STANDARDS MAY APPLY		

<b>Honeywell</b>			
TITLE <b>SWITCH - BASIC</b>			
SIZE	TYPE	DRAWING NAME	REV
<b>B</b>	<b>I</b>	<b>311SM702-T</b>	<b>9</b>

APPROVALS	UL, CSA	4A, 250 VAC		BRAND	L119
-----------	---------	-------------	--	-------	------



RASTER

SCALE	-	WEIGHT .006 LB MAX	SHEET 1 OF 1
-------	---	--------------------	--------------