
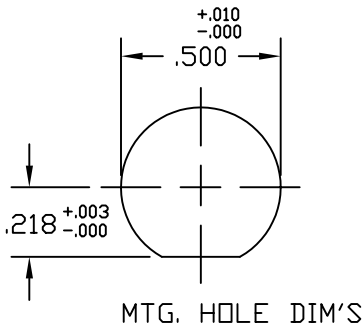
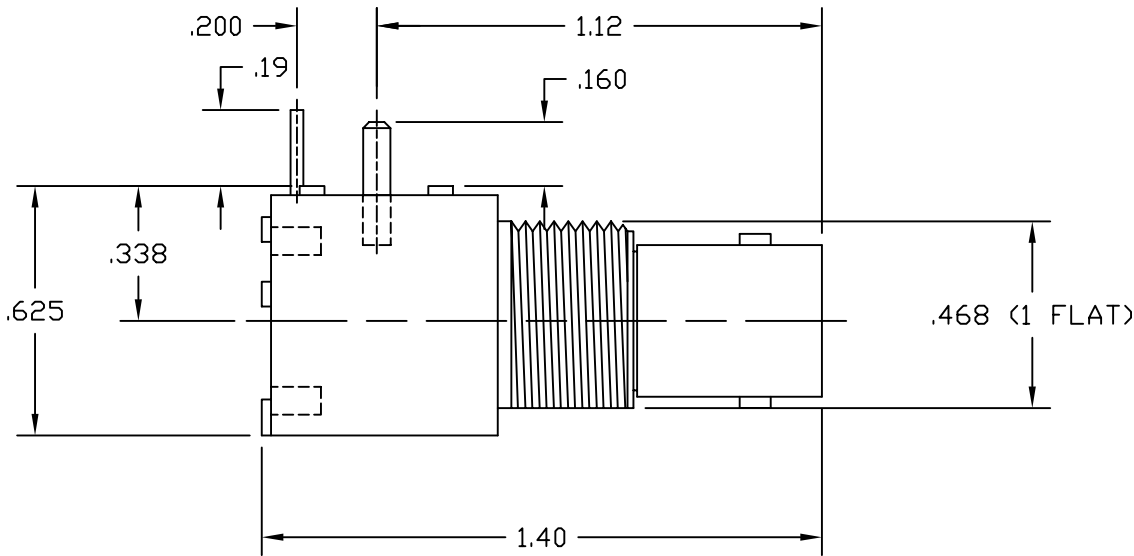
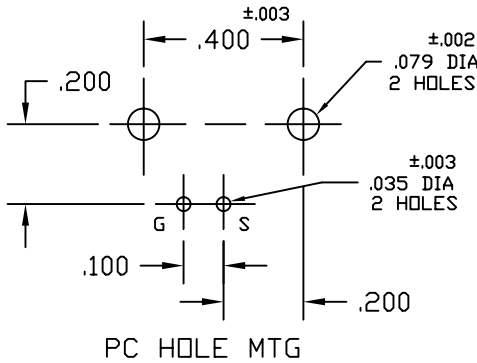
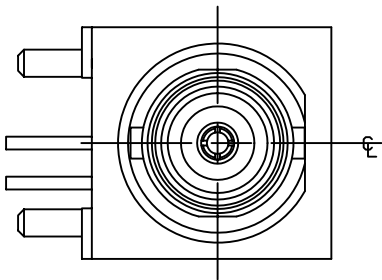
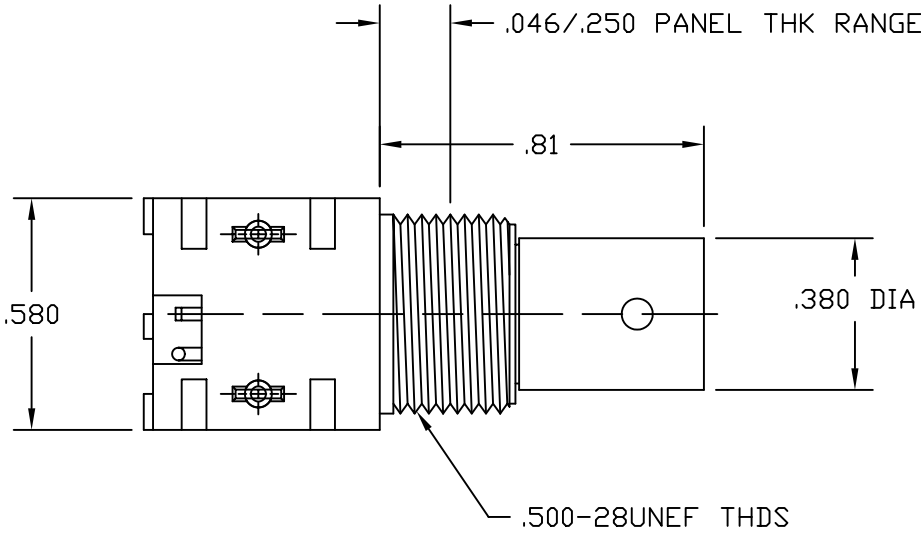
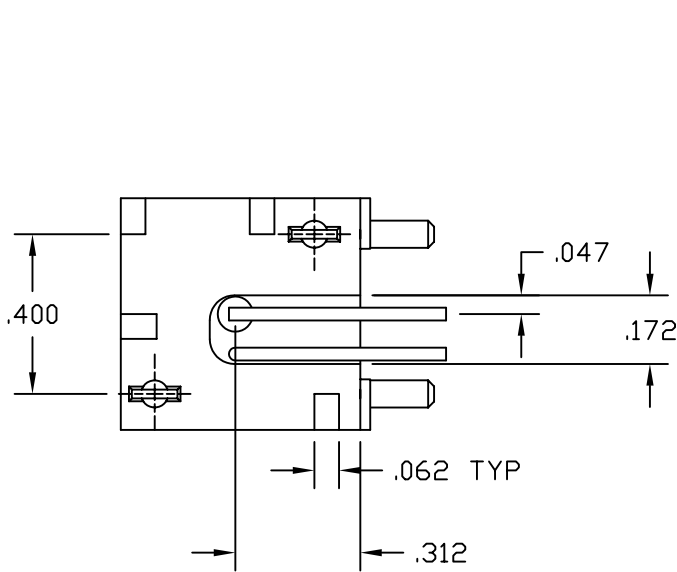


NOTES:

1. MATERIAL: OUTER INSULATOR CASING - WHITE VALOX  
INSULATOR - WHITE NORYL  
CENTER CONTACT - GOLD PLATED PHOSPHOR BRONZE  
BODY - NICKEL PLATED ZINC CASTING  
MOUNTING LEGS - TIN PLATED  
TERMINALS - TIN PLATED COPPER WIRE
2. SEPARATELY SUPPLIED NUT & LOCKWASHER, TO BE TIGHTENED  
DOWN TO 10 IN LBS MIN/ 15 IN LBS MAX WHEN ASSEMBLING TO PANEL.

31-5431		REVISIONS			
DRAWING NO.	REV	DESCRIPTION	DATE	ECO	APPR
THIRD ANGLE PROJ. 	A	OFFICIAL ENG. RELEASE TO MFG.	06/27/89	36598	DR
	J	SEE SHEET 1 FOR REVISIONS	11/27/96	41683	CPM/
	K	SEE SHEET 1 FOR REVISIONS	8/26/05	45703	CPM/



CUSTOMER OUTLINE DRAWING

UNLESS OTHERWISE SPECIFIED, DIMENSIONS ARE IN INCHES AND TOLERANCES ARE: 2 PLACE DECIMAL 3 PLACE DECIMAL ANGLES ±.015 (0,381 mm) ±.005 (0,127 mm) ± 1°	MATERIAL	DRAWN	DATE	TITLE			Amphenol Amphenol Corporation RF/Microwave Operations Danbury, Conn. U.S.A. 06810			
		T. ALBERA	10/4/89							
	REFERENCE EAR 71004-1	ENGINEER	DATE	BNC JACK RT/ANGLE MOUNT PCB RECEPT (WHT)						
		D. ROYCE	1/31/90							
		APPROVED	DATE							
NOTICE - These drawings, specifications, or other data (1) are, and remain the property of Amphenol Corp. (2) must be returned upon request; and (3) are confidential and not to be disclosed to any person other than those to whom they are given by Amphenol Corp. The furnishing of these drawings, specifications, or other data by Amphenol Corp., or to any other person to anyone for any purpose is not to be regarded by implication or otherwise in any manner licensing, granting rights or permitting such holder or any other person to manufacture, use or sell any product, process or design, patented or otherwise, that may in any way be related to or disclosed by said drawings, specifications, or other data.		D. ROYCE	1/31/90				SCALE: 2:1		SHEET 2 OF 2	
		CAD FILE			CODE ID	DWG SIZE	DRAWING NO.		ISSUE	
H:\DEPT611\BNC\031\ASSY\5431SHT2.DWG			74868	B	31-5431		K			