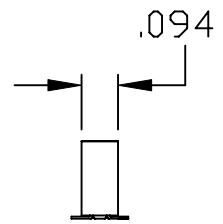
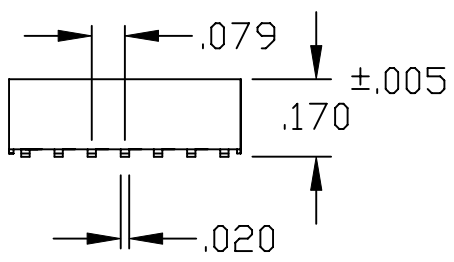
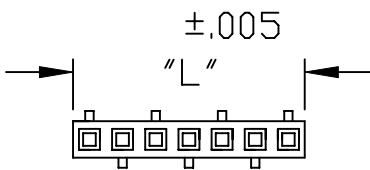


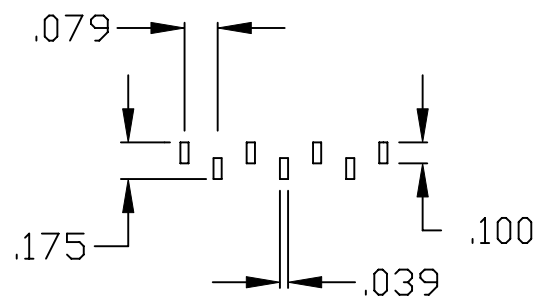
"L" = NO. OF CONTACTS PER ROW X .079

MATERIAL:
HOUSING: NYLON 6T (UL 94V-0) BLACK
CONTACT: PHOSPHOR BRONZE
PLATING: GOLD FLASH ENTIRE CONTACT
RoHS COMPLIANT

ELECTRICAL:
CURRENT RATING: 1 AMP
CONTACT RESISTANCE: 20 mOHM MAX.
INSULATOR RESISTANCE: 5000 MEGOHMS MIN.
DWV: 500V AC
OPERATING TEMP:
-40°C TO +105°C
PROCESSING TEMP:
260°C FOR 10 SECONDS



PCB LAYOUT




SERIES _____ **2863 YY 06RP2**
2863 = SINGLE ROW

POSITIONS _____
SINGLE - INCREMENTS OF 1
(03 TO 40)

TYPE: _____
06 = SURFACE MOUNT

PLATING: _____
P2 = GOLD FLASH

	THESE DRAWINGS AND SPECIFICATIONS ARE THE PROPERTY OF NorComp AND SHALL NOT BE REPRODUCED, COPIED OR USED AS THE BASIS FOR THE MANUFACTURE OF SALE OF APPARATUS WITHOUT WRITTEN PERMISSION.	DRAWN: PAM JENKINS		DATE: 1-29-06		
		CHECKED:		DATE:		
<h1>NorComp</h1>			SCALE: NTS	SHEET 1 OF 1		REV 3
			DWG NO. 2863YY06RP2			