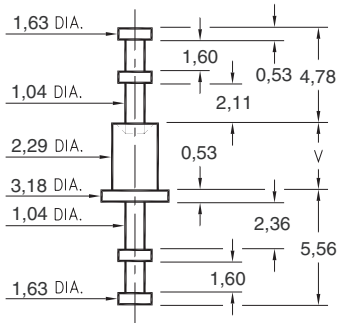


2512

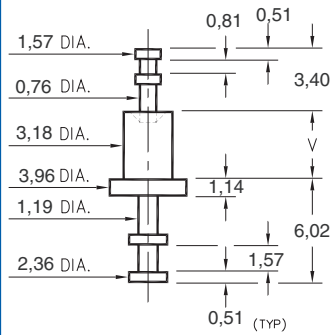


- X -	Board Thickness	Length V
1	0,79	1,57
2	1,57	2,39
3	2,39	3,18
4	3,18	3,96

2512-X-00-XX-00-00-07-0

Swage mount in 2,39 hole

2705

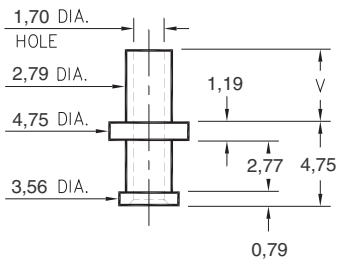


- X -	Board Thickness	Length V
1	0,79	1,91
2	1,57	2,67
3	2,39	3,43
4	3,18	4,19

2705-X-00-XX-00-00-07-0

Swage mount in 3,28 hole

2803

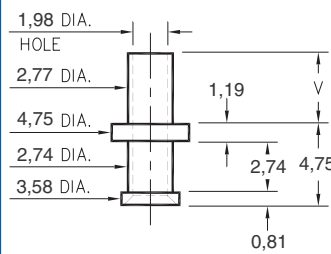


- X -	Board Thickness	Length V
1	0,79	1,98
2	1,57	2,77
3	2,39	3,56
4	3,18	4,34

2803-X-00-XX-00-00-07-0

Swage mount in 2,87 hole

2815

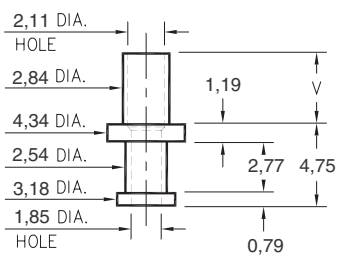


- X -	Board Thickness	Length V
1	0,79	1,91
2	1,57	2,67
3	2,39	3,43
4	3,18	4,19

2815-X-00-XX-00-00-07-0

Swage mount in 2,87 hole

2816

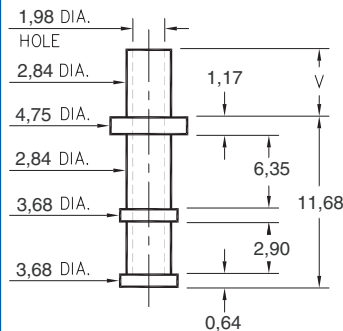


- X -	Board Thickness	Length V
1	0,79	1,98
2	1,57	2,77
3	2,39	3,58
4	3,18	4,37

2816-X-00-XX-00-00-07-0

Swage mount in 2,95 hole

2817



- X -	Board Thickness	Length V
1	0,79	1,91
2	1,57	2,67
3	2,39	3,43
4	3,18	4,19

2817-X-00-XX-00-00-07-0

Swage mount in 2,95 hole

SPECIFICATIONS

PIN MATERIAL:
Brass Alloy 360, 1/2 Hard
(Except Swage pins which
are annealed)

**PART MANUFACTURED IN
INCHES, METRIC FOR REF ONLY**

TOLERANCES ON:
LENGTHS: ± 0,13
DIAMETERS: ± 0,05
ANGLES: ± 2°

ORDER CODE: 2XXX - X - 00 - XX - 00 - 00 - 07 - 0

BASIC PART #

SPECIFY PIN FINISH:

- 01** 5,08 μm TIN/LEAD OVER NICKEL
- 80** 5,08 μm TIN OVER NICKEL ◊
- 44** 7,62 μm SILVER OVER COPPER ◊
- 50** 7,62 μm ELECTRO-SOLDER (60/40 SnPb)

