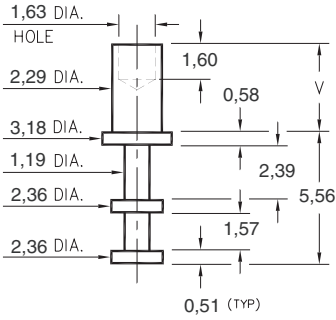


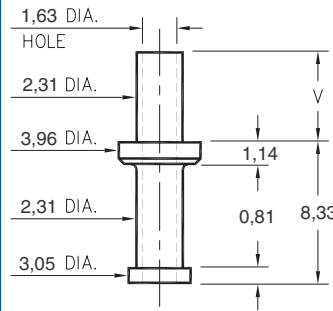
2501



- X -	Board Thickness	Length V
1	0,79	1,98
2	1,57	2,77
3	2,39	3,56
4	3,18	4,34

2501-X-00-XX-00-00-07-0
Swage mount in 2,39 hole

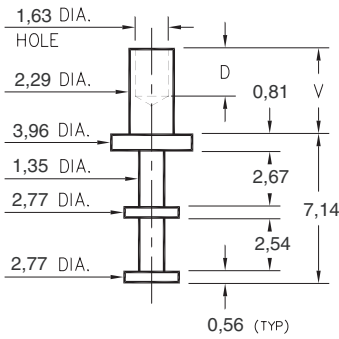
2703



- X -	Board Thickness	Length V
1	0,79	,077
2	1,57	2,72
3	2,39	3,48
4	3,18	4,24

2703-X-00-XX-00-00-07-0
Swage mount in 2,39 hole

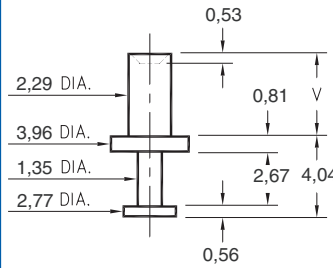
2702



- X -	Board Thickness	Length V	Depth D
1	0,79	1,91	1,60
2	1,57	2,67	2,36
3	2,39	3,43	
4	3,18	4,19	

2702-X-00-XX-00-00-07-0
Swage mount in 2,39 hole

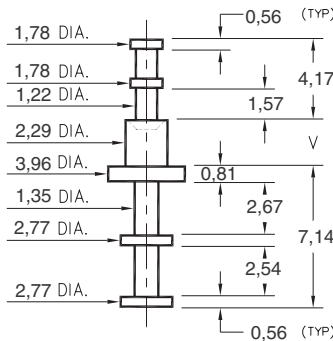
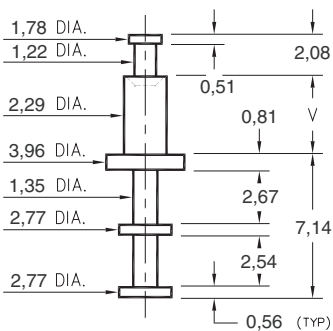
2710



- X -	Board Thickness	Length V
1	0,79	1,57
2	1,57	2,39
3	2,39	3,18
4	3,18	3,96

2710-X-00-XX-00-00-07-0
Swage mount in 2,39 hole

2717/2713



- X -	Board Thickness	Length V
1	0,79	1,57
2	1,57	2,39
3	2,39	3,18
4	3,18	3,96

2717-X-00-XX-00-00-07-0
Swage mount in 2,39 hole

2713-X-00-XX-00-00-07-0
Swage mount in 2,39 hole

SPECIFICATIONS

PIN MATERIAL:
Brass Alloy 360, 1/2 Hard
(Except Swage pins which are annealed)

PART MANUFACTURED IN INCHES, METRIC FOR REF ONLY

TOLERANCES ON:
LENGTHS: ± 0,13
DIAMETERS: ± 0,05
ANGLES: ± 2°

ORDER CODE: 2XXX - X - 00 - XX - 00 - 00 - 07 - 0

BASIC PART #

SPECIFY PIN FINISH:

- 01** 5,08 μm TIN/LEAD OVER NICKEL
- 80** 5,08 μm TIN OVER NICKEL ◆
- 44** 7,62 μm SILVER OVER COPPER ◆
- 50** 7,62 μm ELECTRO-SOLDER (60/40 SnPb)

