

CARD GUIDES

243, 368 Series Card Guides

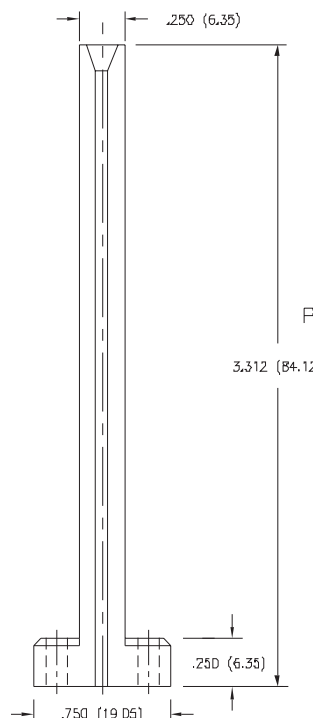
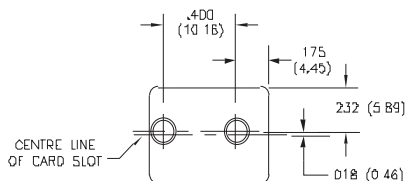
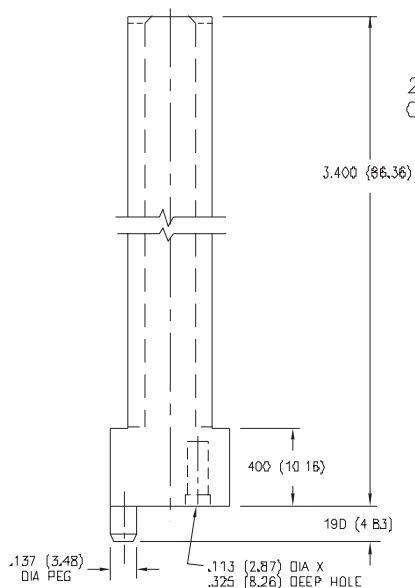
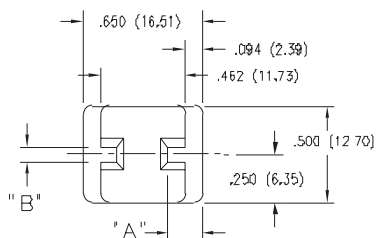
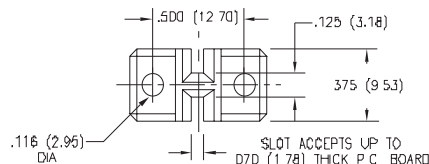


368 SERIES CARD GUIDE FEATURES

- Accepts .062 (1.57) Nominal Thickness P.C. Board
- Stand-Alone Guide with "Back to Back" Board Slots
- Through Mounting Holes for #4 or M3 Screws or #6 Self-Threading Screws

SPECIFICATIONS

- ◆ Guide Material: Thermoplastic Polyester, UL 94V-0, Colour: Green
- ◆ Operating Temperature: -65 to +105 Degrees C



368 SERIES
CARD GUIDE
P/N 368-220-301

243 SERIES CARD GUIDE FEATURES

- Accepts .062 (1.57) or .250 (6.35) Nominal Thickness P.C. Board
- Stand-Alone Guide with "Back to Back" Board Slots
- Mounting Peg and Hole for #5 Self-Threading Screw

SPECIFICATIONS

- ◆ Guide Material: Polycarbonate, Colour: Grey
- ◆ Operating Temperature: -65 to +125 Degrees C

243 SERIES CARD GUIDE DIMENSIONS

| Part Number | "A" | "B" (Accepts Nominal P.C. Board) |
|-------------|-------------|----------------------------------|
| 243-220-301 | .187 (4.75) | .062 (1.57) Thick |
| 243-220-302 | .237 (6.02) | .250 (6.35) Thick |