

23AC2

M

DRAWING NUMBER

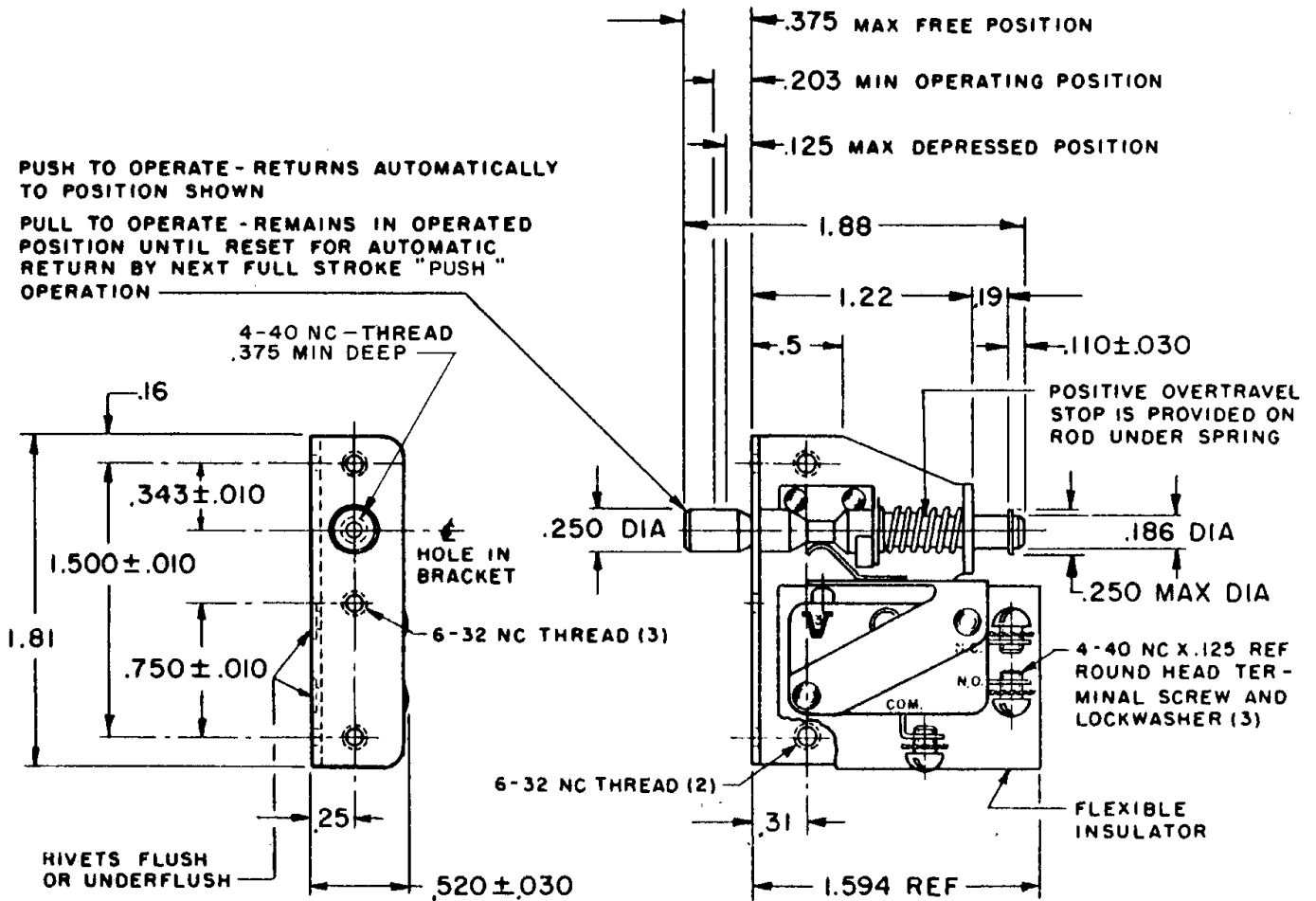
X 2

ISSUE

3

REPLACES
 RELEASE NO. SR 8861
 CHECK
 28 MAR 60
 25 JUN 60
 CHECK
 28 MAR 60
 4 APR 60
 CHECK
 23 MAR 60
 DRAWN
 M B F

PUSH TO OPERATE - RETURNS AUTOMATICALLY TO POSITION SHOWN
 PULL TO OPERATE - REMAINS IN OPERATED POSITION UNTIL RESET FOR AUTOMATIC RETURN BY NEXT FULL STROKE "PUSH" OPERATION



NOTE-
 1-UNIT INCLUDES CATALOG LISTING V3-13 BASIC SWITCH (1)
 2-NOTCH IN ACTUATOR ROD WILL PERMIT .035 DISPLACEMENT BETWEEN END OF ROD AND HOLE IN BRACKET
 3-BASIC SWITCH PLASTIC PARTS ARE MADE OF MINERAL FILLED PHENOLICS
 4-ACTUATOR ROD MADE OF HIGH STRENGTH PLASTIC

THIS DRAWING COVERS A PROPRIETARY ITEM AND IS THE PROPERTY OF MICRO SWITCH, A DIVISION OF MINNEAPOLIS-HONEYWELL REGULATOR CO. THIS DRAWING IS NOT TO BE COPIED OR USED WITHOUT THE APPROVAL OF MICRO SWITCH.

CHARACTERISTICS	ELECTRICAL DATA		SCALE FULL
TOTAL TRAVEL .250 APPROX PUSH DIRECTION .187 APPROX PULL DIRECTION	CONTACT ARRANGEMENT S P D T	BREAK DISTANCE .040 APPROX	DO NOT SCALE PRINT
FULLY DEPRESSED FORCE 4 LBS MAX	15 A-1/3 HP-125 OR 250 VAC 1/2 A-125 VDC; 1/4 A-250 VDC		UNLESS OTHERWISE SPECIFIED DIMENSIONS ARE IN INCHES TOLERANCES ARE: ONE PLACE (.0) ±.030 TWO PLACE (.00) ±.015 THREE PLACE (.000) ±.005 ANGLES ±
	(A)		WEIGHT
	(B)		