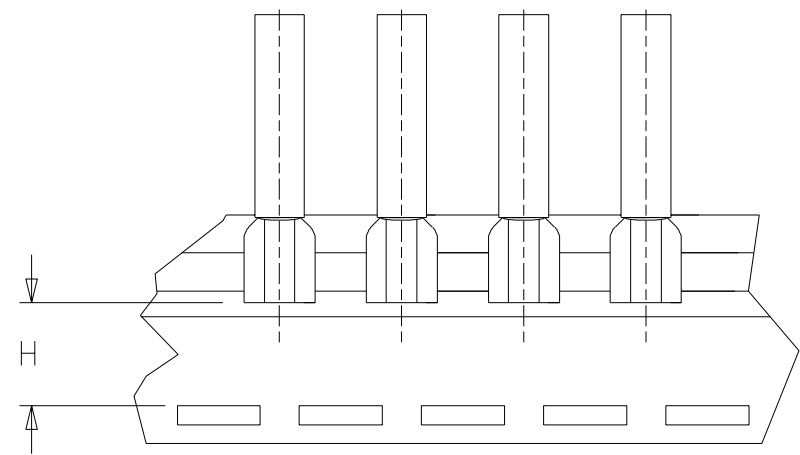
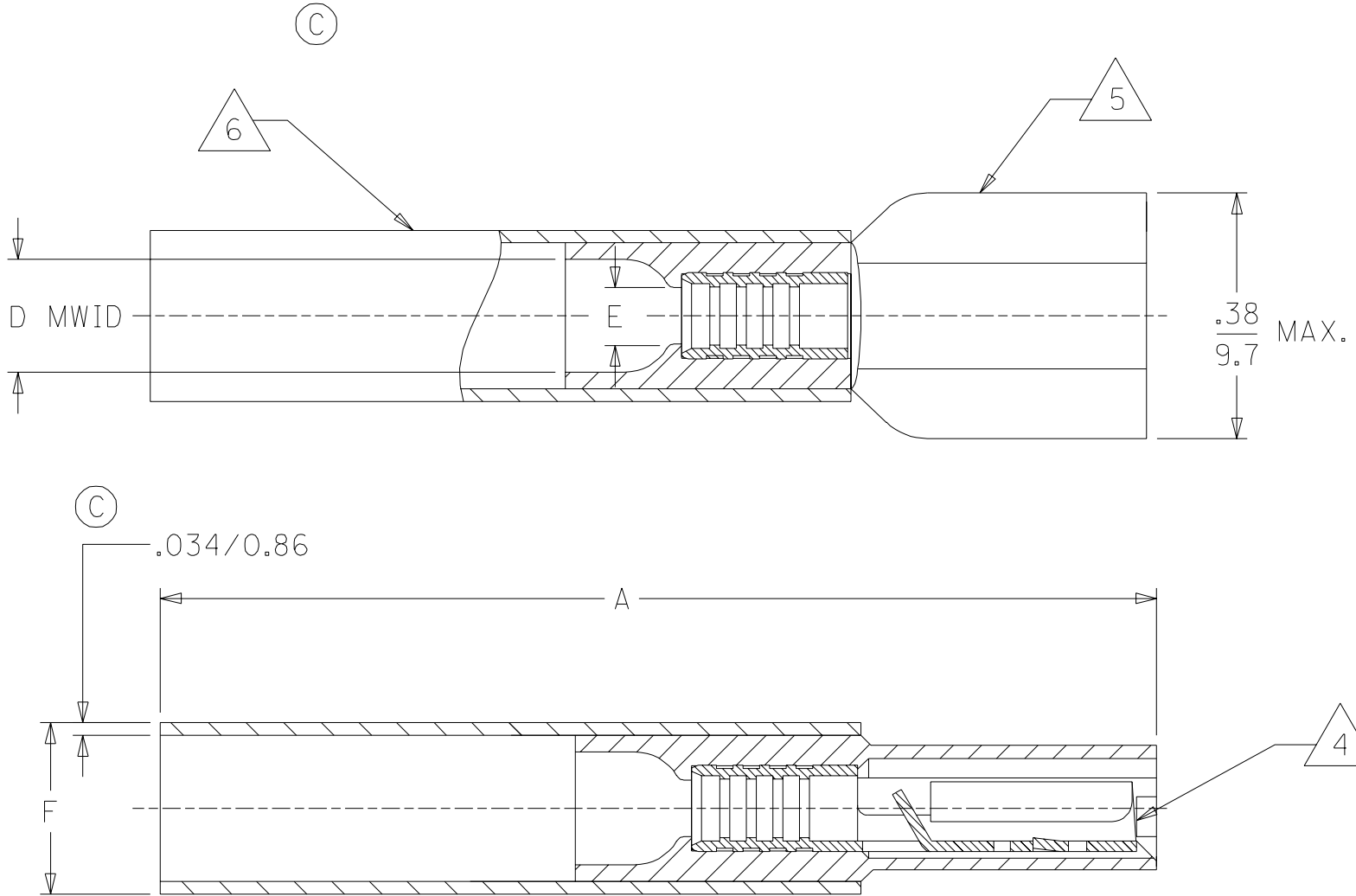


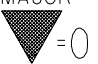


10	9	8	7	6	5	4	3	2	SD-19164-020				
MATERIAL NUMBER	ENGINEERING NUMBER	TAPE MATERIAL NUMBER	TAPE ENGINEERING NUMBER	WIRE SIZE AWG	WIRE SIZE MM SQ.	FITS MALE TAB	PERMA-SEAL COLOR	A MAX.	D MWID	E MIN	F MAX. DIA.	H ±.010/0.25	
191640017	SAA-9261	191640018	SAA-9261T	22-18	.25-1.5	.250 X .032	RED	1.63/41.4	.17/4.3	.083/2.11	.286/7.26	.55/14.0	
191640050	SBB-9263	191640051	SBB-9263T	16-14	1.0-2.5	.250 X .032	BLUE	1.46/37.1	.17/4.3	.083/2.11	.298/7.57	.55/14.0	
191640076	SC-9281	191640305	SC-9281T	12-10	4.0-6.0	.250 X .032	YELLOW	1.52/38.6	.23/5.8	.140/3.56	.373/9.47	.56/14.2	



TAPE MOUNTING DETAIL  
C

- NOTES:
1. FEMALE RECEPTACLE CONFORMS TO NEMA.
  2. ALL DIMENSIONS SHOWN ARE BEFORE SHRINK TUBING IS HEATED.
  3. "MWID" DENOTES MAX. WIRE INSULATION DIA.
  4. TAB MATERIAL: .018 THK, BRASS, PLATING, TIN.
  5. INSULATION MAT'L: MOLDED NYLON
  6. NIAC TUBING WITH HOTMELT INNER LINER. SEE CHART FOR COLOR.

## SALES DRAWING

WAS CD05335-03 EC NO.ETC2003-0102 DRWN:BRE 03/03/20 CH'K: HEB 03/03/20 APPR:RWD 03/03/20			DESCRIPTION	QUALITY SYMBOLS  MAJOR  =0  CRITICAL  =0	GENERAL TOLERANCES: (UNLESS SPECIFIED)			SCALE NO:NE	DESIGN UNITS <input type="checkbox"/> mm <input checked="" type="checkbox"/> INCH	 THIRD ANGLE PROJECTION	DIMENSIONS: <input type="checkbox"/> mm INCH <input checked="" type="checkbox"/> INCH mm <input type="checkbox"/> mm ONLY		SHT	REV	
								DRAWN BY & DATE BRE 02/10/29		TITLE: PERMA-SEAL COUPLER FEMALE RECEPTACLE NIAC					
								CHECKED BY & DATE HEB 02/10/29							
								APPROVED BY & DATE RWD 02/10/29		MOLEX INCORPORATED					
								CAD FILENAME SD-19164-020 .DGN							MATERIAL NO. SEE CHART
C			REV		DRAFT WHERE APPLICABLE MUST REMAIN WITHIN DIMENSIONS			THIS DRAWING CONTAINS INFORMATION THAT IS PROPRIETARY TO MOLEX INCORPORATED AND SHOULD NOT BE USED WITHOUT WRITTEN PERMISSION.							SIZE B