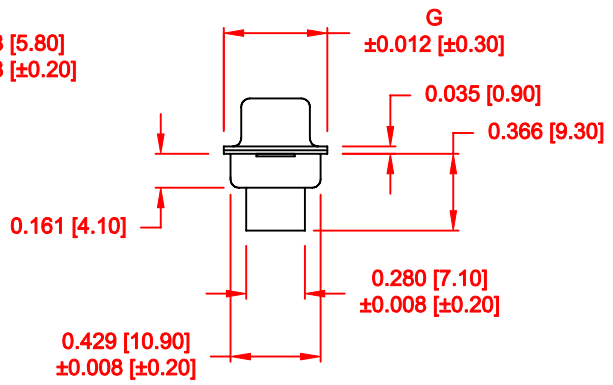
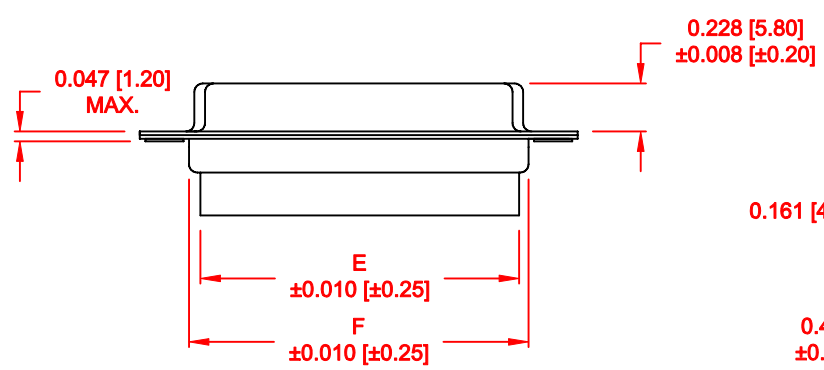
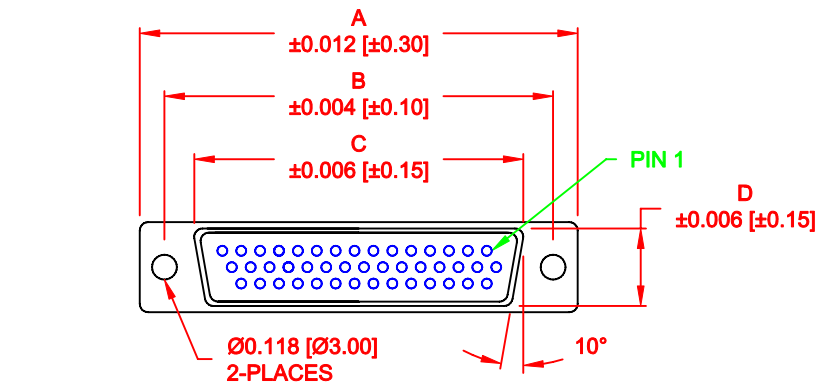


DESCRIPTION: HIGH DENSITY FEMALE - CRIMP AND LOAD



4 ROWS

No. OF PINS	DIMENSIONS						
		B	C	D	E	F	G
15	1.213	0.984	0.643	0.311	0.606	0.756	0.426
	30.80	24.99	16.34	7.90	15.40	19.20	12.60
26	1.541	1.312	0.966	0.311	0.954	1.091	0.426
	39.15	33.32	24.53	7.90	24.22	27.70	12.60
44	2.087	1.852	1.512	0.311	1.499	1.618	0.426
	53.00	47.04	38.40	7.90	38.08	41.10	12.60
62	2.728	2.500	2.156	0.311	2.147	2.256	0.426
	69.30	63.50	54.76	7.90	54.54	57.30	12.60
78	2.638	2.406	2.057	0.429	2.043	2.169	0.606
	67.00	61.10	52.26	10.90	51.90	55.10	15.40

MATERIAL:

SHELL: STEEL, TIN OR NICKEL PLATED
INSULATOR: PBT, UL 94V-O RATED,
+30% FIBER-GLASS OR NYLON-66
CONTACT: BRASS, GOLD PLATED OVER NICKEL

ELECTRICAL:

CURRENT RATING: 5 AMPS
CONTACT RESISTANCE: 15 mOhms Max.
INSULATION RESISTANCE: 1,000 MOhms min.
VOLTAGE: 500VAC FOR 1 MINUTE
TEMPERATURE: -50° C TO 100° C

RoHS COMPLIANT

180-YYY-27YLYY1

SERIES _____
POSITIONS _____
015 _____
026 _____
044 _____
062 _____
078 _____
GENDER _____
2 = FEMALE
TERMINATION _____
7 = CRIMP & LOAD
SHELL PLATING _____
2 = TIN
3 = NICKEL
RoHS COMPLIANT (230°C) _____
HARDWARE OPTIONS _____
00 = NO HARDWARE
01 = .098" CLINCH NUT (BOARD SIDE)
02 = .236" CLINCH NUT (BOARD SIDE)
03 = .236" CLINCH NUT (MATING SIDE)
PLATING OPTIONS _____
1 = GOLD FLASH
2 = 30u" GOLD

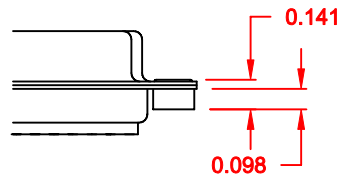
DO NOT SCALE FROM DRAWING

	THESE DRAWINGS AND SPECIFICATIONS ARE THE PROPERTY OF NorComp AND SHALL NOT BE REPRODUCED, COPIED OR USED AS THE BASIS FOR THE MANUFACTURE OF SALE OF APPARATUS WITHOUT WRITTEN PERMISSION.		DRAWN: PAM JENKINS		DATE: 7-19-05			
	CHECKED:		DATE:					
NorComp			SCALE:	SHEET 1 OF 2	REV 11			
			DWG NO. 180-YYY-27YLYY0					

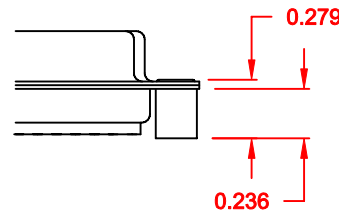
TOLERANCE:
ALL DIMENSIONS ARE ±0.010

ALL CLINCH-NUTS ARE 4-40 INTERNAL THREADS

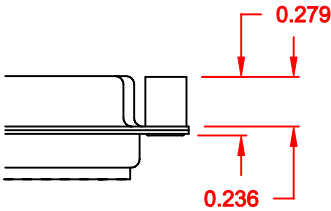
01X 0.065" (BOARD SIDE) - CN1



02X 0.236" (BOARD SIDE) - CN2




03X..... 0.236" (MATING SIDE) - CN8



DO NOT SCALE FROM DRAWING

RoHS COMPLIANT

	THESE DRAWINGS AND SPECIFICATIONS ARE THE PROPERTY OF NorComp AND SHALL NOT BE REPRODUCED, COPIED OR USED AS THE BASIS FOR THE MANUFACTURE OF SALE OF APPARATUS WITHOUT WRITTEN PERMISSION.	DRAWN: WAYNE ROBBINS		DATE: 11-28-05	
		CHECKED:		DATE:	
NorComp	SCALE:		SHEET 2 OF 2		REV 11
	DWG NO. 180-YYY-27YLYY0				