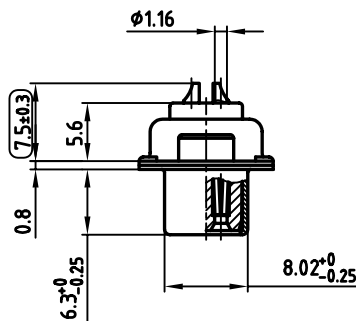
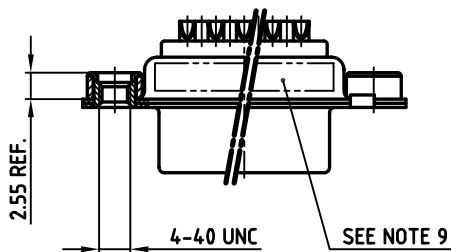
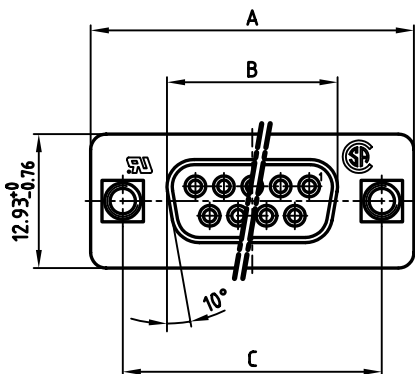


used for: D-SUB



POS.	A -0.76	B -0.25	C	Part No:
9	31.19	16.46	25.00 ^{+0.12} / _{-0.13}	164A10219X
15	39.52	24.79	33.30 ^{+0.15} / _{-0.1}	164A10229X
25	53.42	38.50	47.04 ±0.13	164A10239X
37	69.70	54.96	63.50 ±0.13	164A10249X

NOTES:

- METALSHELLS: STEEL; min. 320µ" TIN
- INSULATORS: PBT GF UL 94 V-0, BLACK
- CONTACTS: COPPER ALLOY
- PLATING: min. 8µ" HARD GOLD OVER min. 50µ" NICKEL
- THREADED INSERT: COPPER ALLOY; min. 200µ" TIN over 80µ" NICKEL
- COLLAR INSERT: COPPER ALLOY; min. 200µ" TIN over 80µ" NICKEL
- MAXIMUM TORQUE VALUE FOR THREAD: 6" LBS
- SOLDER CUP ACCEPTS CABLE AWG 20
- CONNECTOR IS PART MARKED: PART-NO. CONEC ABC
- = CHECK DIMENSION

Directive 2002/95/EC
 „RoHS“
 Compliant

APPROVAL * FREIGABE * DEBLOCAGE * AUTORIZACION * APPROVAL	
CUSTOMER APPROVAL DATE:	
NAME:	TITLE:
COMPANY NAME:	
APPROVAL * FREIGABE * DEBLOCAGE * AUTORIZACION * APPROVAL	

THIS DRAWING MAY NOT BE COPIED OR REPRODUCED IN ANY WAY, AND MAY NOT BE PASSED ON TO A THIRD PARTY, WITHOUT WRITTEN PERMISSION.
 OWNERSHIP AND COPYRIGHT OF CONEC GmbH
DO NOT ALTER CAD DRAWING BY HAND

tolerance		 dim. in mm	scale: 2:1
2004	date		material: SEE NOTES
drawn	04.11.	Schmidt	D-SUB FEMALE Solder cup accepts cable AWG 20 with threaded insert, 9 - 37 pos.
appd.	04.11.	Mickenbecker	
norm.	DIN 41652		
d-old			
			dwg no: AutoCAD 2004
rev.	description	date	name
			16K1A1264 part no: SEE TABLE

title: D-SUB FEMALE Solder cup accepts cable AWG 20 with threaded insert, 9 - 37 pos.	scale: 2:1 material: SEE NOTES
dwg no: AutoCAD 2004	DIN-A 3 sh: 1/1
16K1A1264 part no: SEE TABLE	