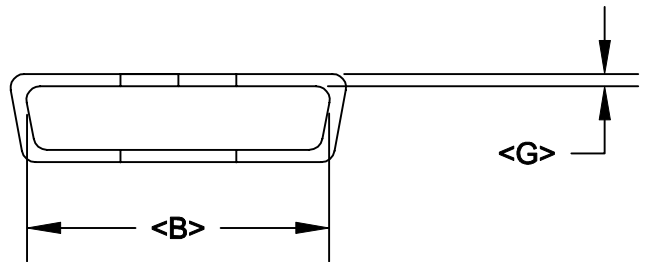
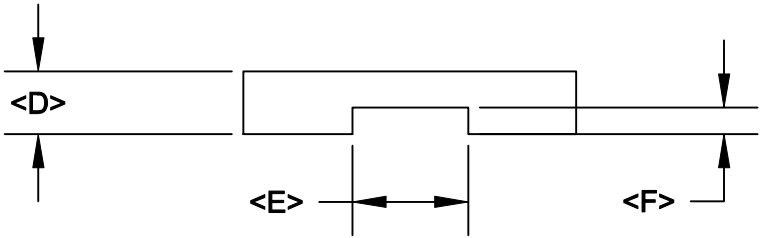
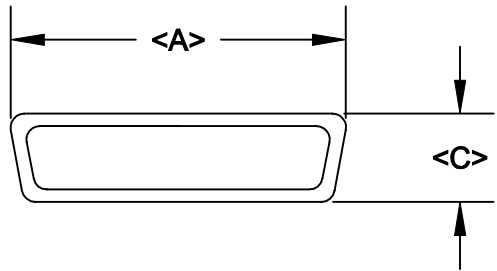


DESCRIPTION: DUST COVER MALE

DIMENSIONS


| | A | B | C | D | E | F | G |
|----|-------|-------|-------|------|-------|------|------|
| 9 | .827 | .705 | .488 | .240 | .323 | .118 | .059 |
| | 21.01 | 17.91 | 12.40 | 6.10 | 8.20 | 3.00 | 1.50 |
| 15 | 1.161 | .976 | .492 | .303 | .398 | .134 | .067 |
| | 29.49 | 24.79 | 12.50 | 7.70 | 10.11 | 3.40 | 1.70 |
| 25 | 1.681 | 1.516 | .480 | .299 | .472 | .122 | .067 |
| | 42.70 | 38.51 | 12.19 | 7.59 | 11.99 | 3.10 | 1.70 |



PART NUMBER

| | |
|----|-----------------|
| 09 | 160-000-109-000 |
| 15 | 160-000-115-000 |
| 25 | 160-000-125-000 |

MATERIAL:
HIGH TEMPERATURE PLASTIC

| | | | | |
|--|---|--|--------------------------------|----------------------------|
|  | THESE DRAWINGS AND SPECIFICATIONS ARE THE PROPERTY OF NorComp AND SHALL NOT BE REPRODUCED, COPIED OR USED AS THE BASIS FOR THE MANUFACTURE OF SALE OF APPARATUS WITHOUT WRITTEN PERMISSION. | | DRAWN: PAM JENKINS | DATE: 8-12-98 |
| | <h1>NorComp</h1> | | | CHECKED: |
| SCALE: | | | | SHEET 1 OF 1 |
| | | | DWG NO. 160-000-1XX-000 | |