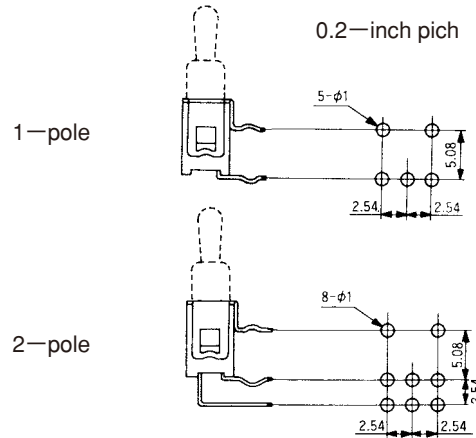


ATE STANDARD TOGGLE SWITCHES

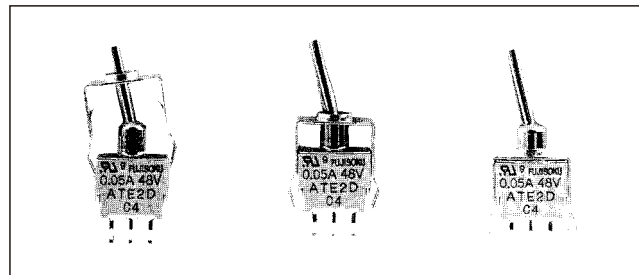
RIGHT ANGLE TERMINALS

- The pitch between terminals and PC support is as the sketch below.

Examples: 0.2 inch pitch ATE1D-5M3-10



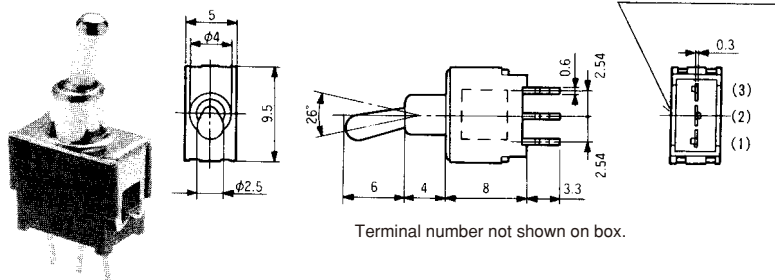
BRACKET INSTALLATION PROCEDURE



OUTLINE DIMENSIONS

SPDT

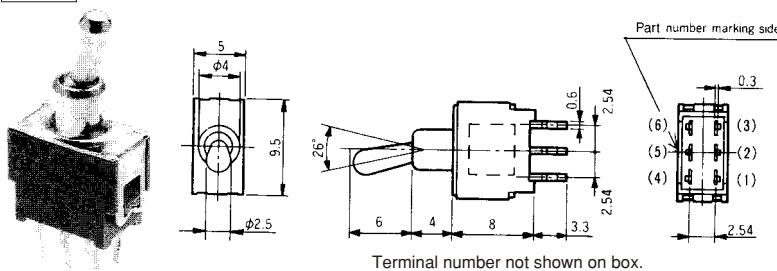
PC



Switching function	Viewed from part No. marking side		
Part No.			
ATE1D-2M3-10-Z	ON	—	ON
ATE1E-2M3-10-Z	ON	OFF	ON
ATE1F-2M3-10-Z	ON	—	(ON)
Connecting terminals	2—3	—	2—1

DPDT

PC



Switching function	Viewed from part No. marking side		
Part No.			
ATE2D-2M3-10-Z	ON	—	ON
ATE2E-2M3-10-Z	ON	OFF	ON
★ATE2F-2M3-10-Z	ON	—	(ON)
Connecting terminals	2—3 5—6	—	2—1 5—4

(ON) : Momentary.

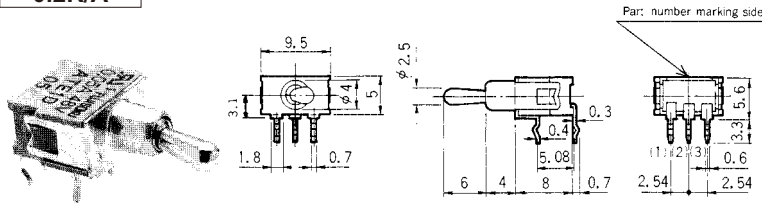
★ : Made-to-order items.

ATE STANDARD TOGGLE SWITCHES

OUTLINE DIMENSIONS

SPDT

0.2R/A

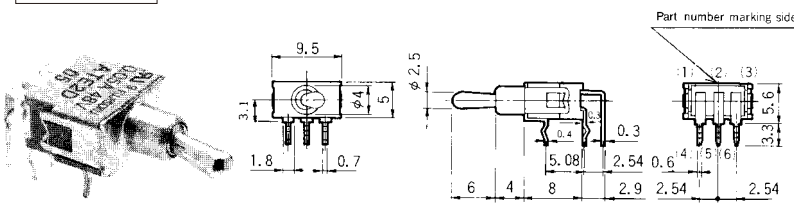


Terminal number not shown on box.

Switching function Part No.	Viewed from part No. marking side		
ATE1D-5M3-10-Z	ON	—	ON
ATE1E-5M3-10-Z	ON	OFF	ON
☆ATE1F-5M3-10-Z	ON	—	(ON)
Connecting terminals	2—3	—	2—1

DPDT

0.2R/A



Terminal number not shown on box.

Switching function Part No.	Viewed from part No. marking side		
☆ATE2D-5M3-10-Z	ON	—	ON
★ATE2E-5M3-10-Z	ON	OFF	ON
★ATE2F-5M3-10-Z	ON	—	(ON)
Connecting terminals	2—3 5—6	—	2—1 5—4

(ON) : Momentary.

☆ : Quasi-standard items.

★ : Made-to-order items.

OPTIONAL ACCESSORIES

Type	ATE—2M · 5M
Part name	Color Cap
Dimensions	<p>Gloss finish (Vinyl chloride resin)</p>
White	140000470174
Red	140000470175
Black	140000470173
Gray	140000470179
Green	140000470177
Blue	140000470178
Orange	140000470181
Yellow	140000470176
Brown	140000470180

Type	ATE—2M		
Part name	Bracket		
Dimensions			
Part number	140000640314	140000640315	140000640318

● When using **Bracket**, pay attention to the printed circuit board hole dimensions which differ according to type of bracket.

ATE

STANDARD TOGGLE SWITCHES

PC HOLE LAYOUTS

PC terminal

(Top view)

Series	ATE-2M	ATE-2M		
Installation	Without bracket	When optional bracket is used		
		140000640314	140000640315	140000640318
1-pole				
2-pole Two terminal rows 2.54mm				

Right Angle terminal · Vertical Mount terminal (Top view)

Series	ATE-5M · 5F
Terminal	0.2-inch pitch
1-pole	
2-pole	

BRACKET MOUNTED DIMENSIONS

Type	ATE-2M
	Standard
Dimensions	

ATE STANDARD TOGGLE SWITCHES

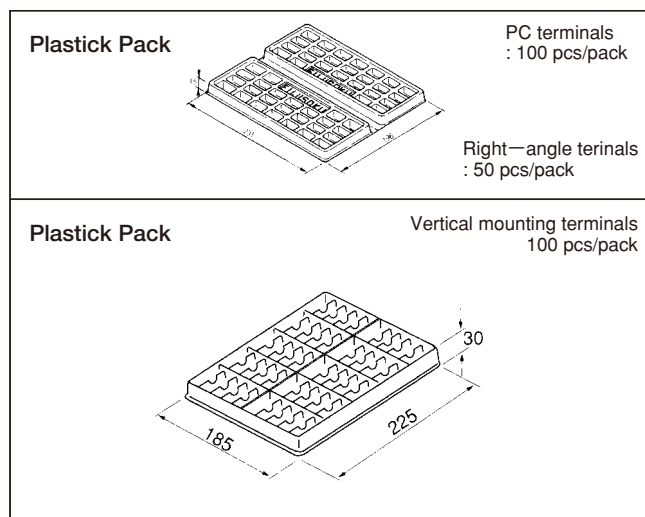
■ SOLDERING

- (1) Hand soldering
Device : Solder iron
380 °C Max. 3 sec. Max.
- (2) Auto soldering
Device : Wave or dip type
275 °C Max. 6 sec. Max.
● Preheat should be within 80-120 °C, 120sec.

■ FLUX CLEANING

- (1) Solvent : Fluorine or Alcohol type.
- (2) Cleaning shall be made when terminal temperature falls to 90 °C or lower. Or, leave the switch at normal temperature for 5 minutes or longer, before cleaning.

■ PACKAGING SPECIFICATIONS



■ INSTALLATION

- Use printed circuit boards with 1 mm diameter holes.
- Do not bend the terminals prior to installation to PC Board.
- Following the switch installation, avoid placing the device in a position where its weight will be placed on the switch actuator, etc.
- Do not apply a load exceeding 12.7N to the actuator.
Use Bracket (option) when a force exceeding 12.7N is to be applied to the actuator.

