



# Part No. 1110748 - Surface Mount to DIP Adapter for SOT-25, SOT-23A-6

## FEATURES:

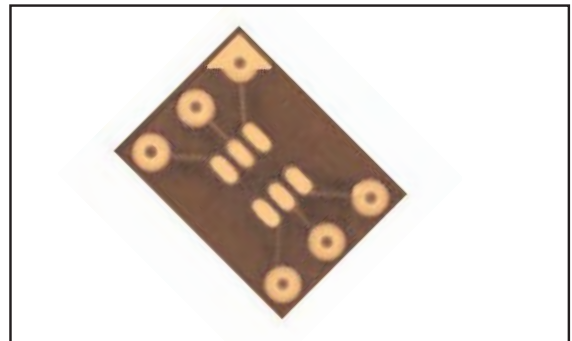
- Allows for breadboarding or substitution of microgate SOT - 23A-6 and SOT-25 IC and transistor packages into .100 [2.54] pitch proto boards or PC boards.
- Solder masked top-side pads allow user to hand solder devices directly to topside of adapter with fewer problems of solder bridging.
- Longer male bottom pins are available at special request for easy use of probe clips.
- Large topside pads allow for soldering test pins, jumpers, etc. to top of adapter.

## SPECIFICATIONS:

- Board material is .062 [1.58] thick FR-4 manufactured to IPC-600E, class 2 standards, with 1 ounce. Copper traces, both sides.
- Pads are HASL.
- Pins are Brass Alloy 360 1/2 hard per UNS C36000 ASTM-B16-00.
- Pin plating is 200 $\mu$  [5.08 $\mu$ m] min. Tin/Lead 93/7 ASTM B 545 over 100 $\mu$  [2.54 $\mu$ m] Nickel per SAE-AMS-QQ-N-290.
- Operating Temperature=221°F [105°C].
- All C.A.C's are manufactured and inspected using IPC -610B class 2 guidelines.

## MOUNTING CONSIDERATIONS:

- Suggested PCB hole size=.028  $\pm$  .003 [.71  $\pm$  .08] dia.



*Note: Aries specializes in custom design and production. In addition to the standard products shown on this page, special materials, platings, sizes, and configurations can be furnished, depending on quantities. Aries reserves the right to change product specifications without notice.*

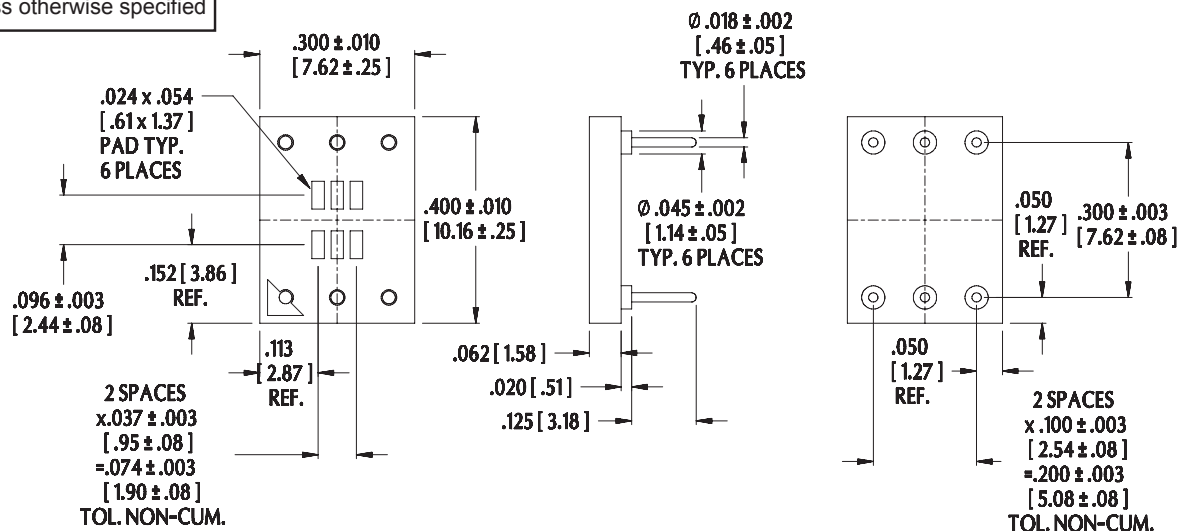
## ORDERING INFORMATION

SPECIFY PART NO. 1110748 WHEN ORDERING

**Consult factory for mounting of consigned chips.**

## ALL DIMENSIONS: INCHES [MILLIMETERS]

All tolerances  $\pm$  .005 [.13] unless otherwise specified



**ARIES**  
ELECTRONICS, INC.  
<http://www.arieselec.com> • [info@arieselec.com](mailto:info@arieselec.com)

Bristol, PA USA  
TEL: (215) 781-9956  
FAX: (215) 781-9845



18043  
Rev. D