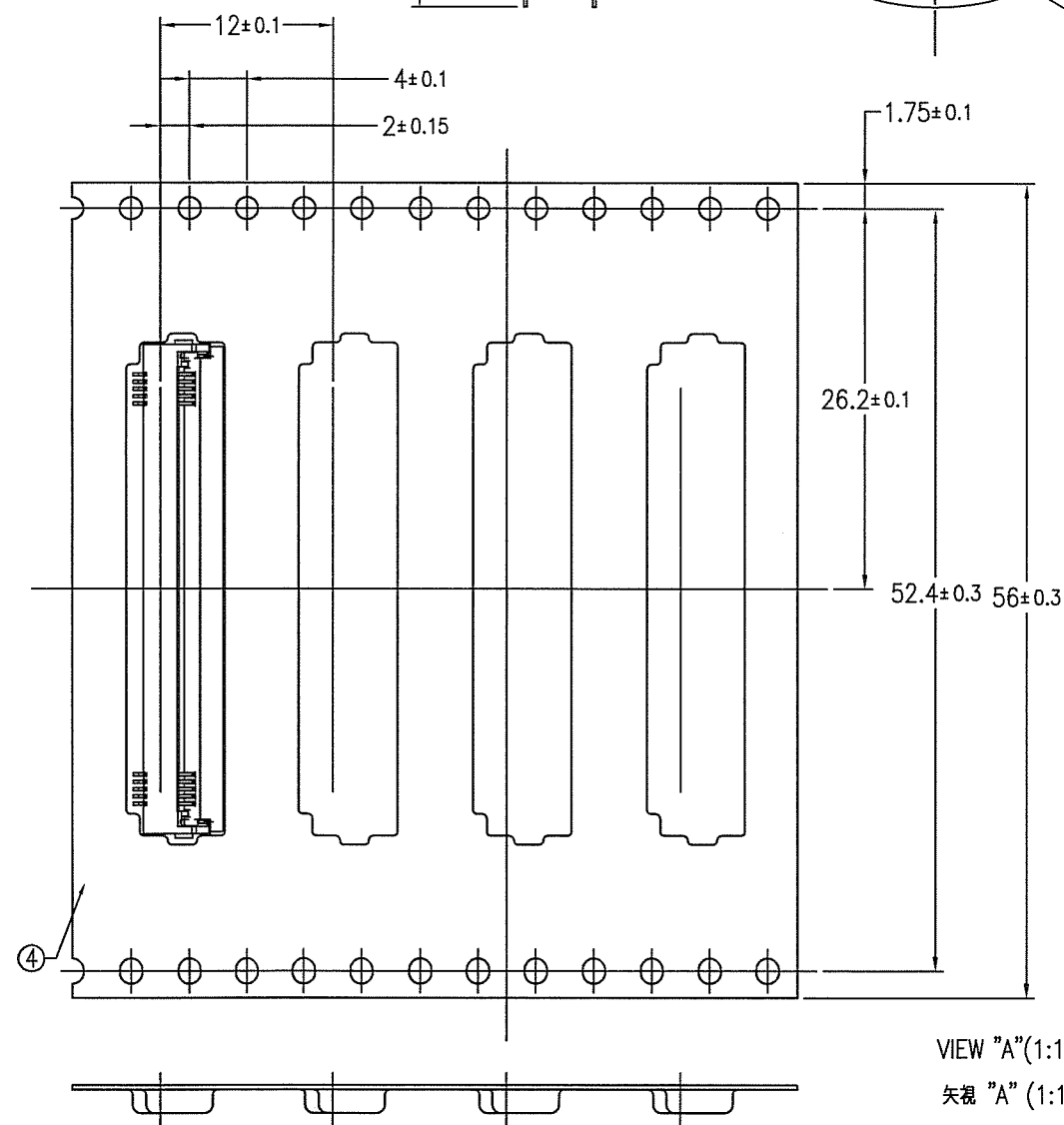


PRODUCT NO.

10085901-XX 15ELF

The direction of drawer
引き出し方向VIEW "A" (1:1)
矢視 "A" (1:1)

NOTE

1. This article carries out the emboss tape package of the P/N10085901 series connector.
2. The shape and dimension of this article are based on JIS C 0806.
(Taping of electronic parts (Surface mounted device))

注記

1. 本品は P/N10085901シリーズをエンボステープ梱包したものである。
2. 本品の形状及び寸法規定は JIS C 0806 (電子部品のテーピング (表面実装部品)) に準拠する。

The direction of drawer
引き出し方向

"A"

Adhesive tape
粘着テープ

Label 表示ラベル

Reel axis

160MIN.
(Empty area)Connector Loading
Area14 Pocket MIN.
(Empty area) (空部)400MIN.
(Cover tape)
(カバーテープ)
(NOTE 4) (注4)The direction of drawer
引き出し方向

<P/N composition> <P/N 構成>

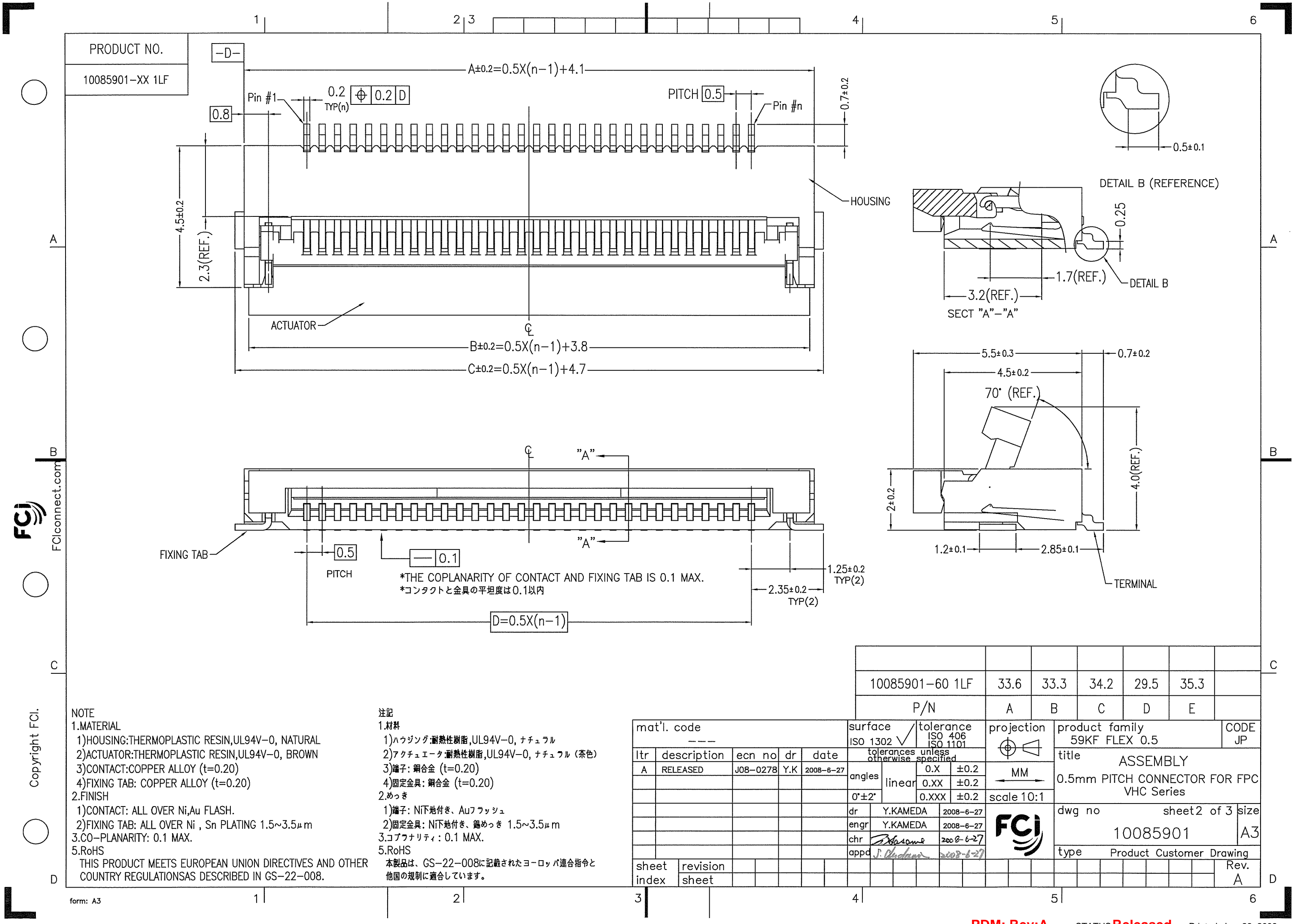
10085901-XX 1 5 E L F

- Lead Free
- Packaging form (E : Plastic reel・Embossing tape package)
- Embossing tape package 5: 12mm PITCH
- Plating spec 1: Au plating
- No of position
- Series name

PARTS TABLE 部品表

No.	Part name 部品名	Part No. 型番	Material 材質	QTY.	Note 備考
①	The reel for packaging 梱包用リール	340551-56E	Polystyrene ポリスチレン	1	Color : White, Electrification prevention processing 色: 白、帯電防止処理品
②	Emboss tape エンボステープ	10081220-__	PET	1	Electrification prevention processing 帯電防止処理品
③	Cover tape カバーテープ	KEC ____	Polyester ポリエステル	1	
④	Connector コネクタ	10085901-__	See sheet 2	3000	

mat'l. code ---				surface ISO 1302 ✓	tolerance ISO 406 ISO 1101	projection MM	product family 59KF FLEX 0.5	CODE JP
ltr	description	ecn no	dr	date	tolerances unless otherwise specified		title	
A	RELEASED	J08-0278	Y.K	2008-6-27	angles linear 0°±3'	0.X ±0.3 0.XX ±0.3 0.XXX ±0.3	ASSEMBLY	
					dr	Y.KAMEDA 2008-6-27	0.5mm PITCH CONNECTOR FOR FPC	
					enr	Y.KAMEDA 2008-6-27	VHC Series	
					chr	2008-6-27	dwg no	sheet 1 of 3 size
					appd	2008-6-27	10085901	A3
sheet index	revision sheet	A	A	A			type	Product Customer Drawing
		1	2	3				Rev. A



PRODUCT NO.
10085901-XX 1LF

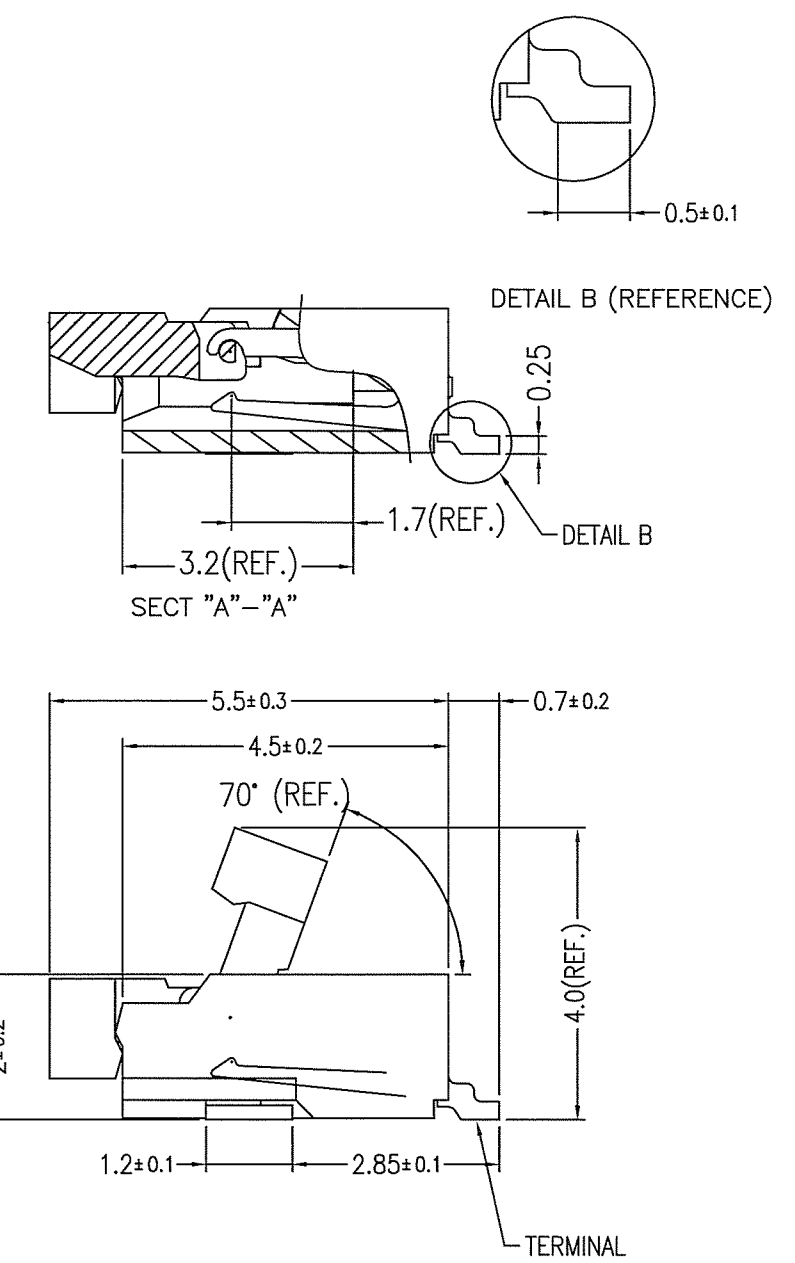
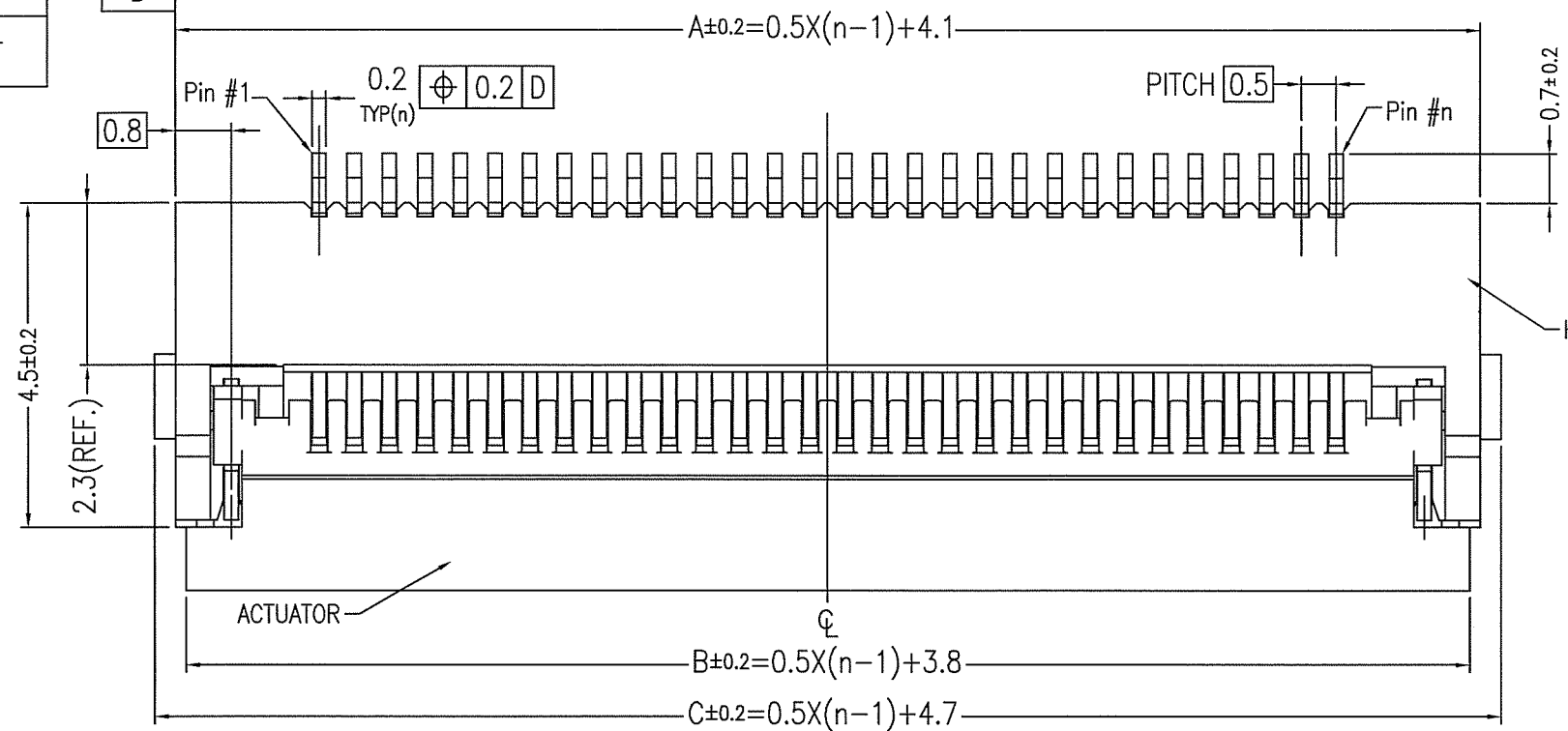
-D-

2 3

4

5

6



NOTE
1.MATERIAL
1)HOUSING:THERMOPLASTIC RESIN,UL94V-0, NATURAL
2)ACTUATOR:THERMOPLASTIC RESIN,UL94V-0, BROWN
3)CONTACT:COPPER ALLOY (t=0.20)
4)FIXING TAB: COPPER ALLOY (t=0.20)
2.FINISH
1)CONTACT: ALL OVER Ni,Au FLASH.
2)FIXING TAB: ALL OVER Ni , Sn PLATING 1.5~3.5μm
3.CO-PLANARITY: 0.1 MAX.
5.RoHS
THIS PRODUCT MEETS EUROPEAN UNION DIRECTIVES AND OTHER COUNTRY REGULATIONSAS DESCRIBED IN GS-22-008.

注記
1.材料
1)ハウジング:耐熱性樹脂,UL94V-0, ナチュラル
2)アクチュエータ:耐熱性樹脂,UL94V-0, ナチュラル (茶色)
3)端子: 銅合金 (t=0.20)
4)固定金具: 銅合金 (t=0.20)
2.めっき
1)端子: Ni下地付き, Auフラッシュ
2)固定金具: Ni下地付き, 鍍めっき 1.5~3.5μm
3.コプラナリティ: 0.1 MAX.
5.RoHS
本製品は、GS-22-008に記載されたヨーロッパ適合指令と他国の規制に適合しています。

mat'l. code ---					surface ISO 1302 ✓			tolerance ISO 406 ISO 1101			projection 		product family 59KF FLEX 0.5					CODE JP				
litr		description		ecn no		dr	date		tolerances unless otherwise specified							title ASSEMBLY 0.5mm PITCH CONNECTOR FOR FPC VHC Series						
A		RELEASED		J08-0278		Y.K	2008-6-27		angles		linear		O.X ±0.2									
													O.XX ±0.2									
									0°±2'				0.XXX ±0.2		scale 10:1							
									dr		Y.KAMEDA		2008-6-27				dwg no		sheet2 of 3			size
									engr		Y.KAMEDA		2008-6-27				10085901					A3
									chr				2008-6-27									
									appd				2008-6-27									
sheet index		revision sheet																				Rev. A

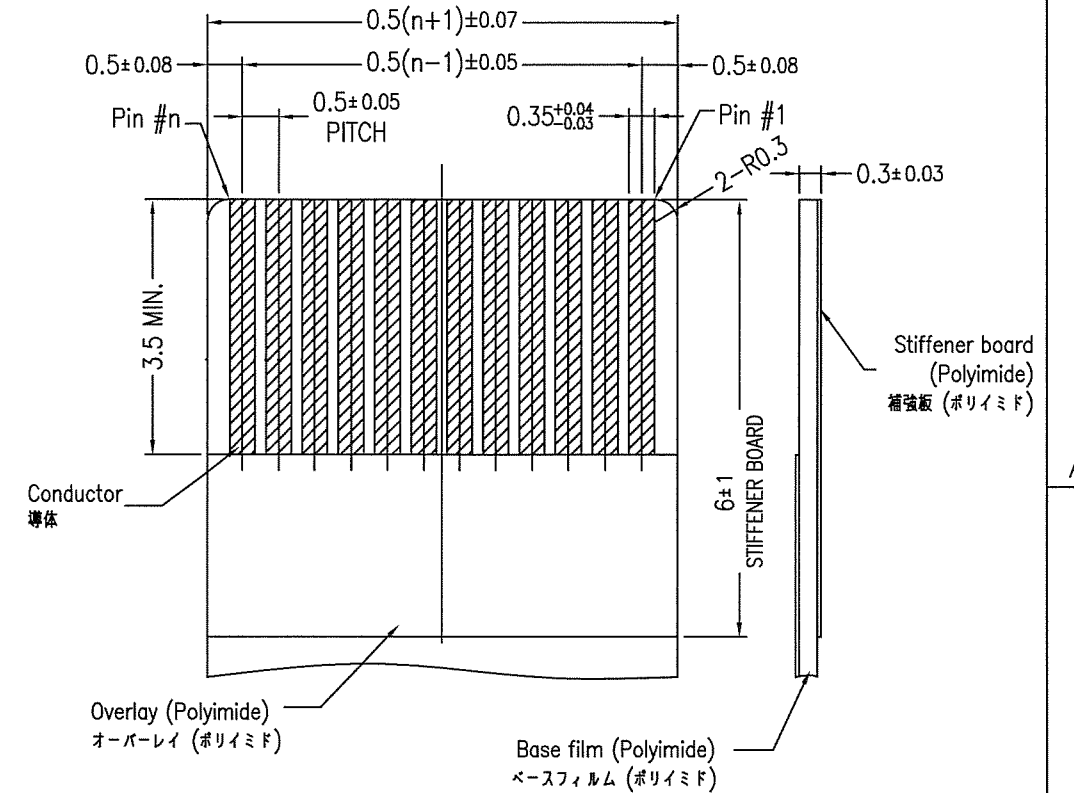
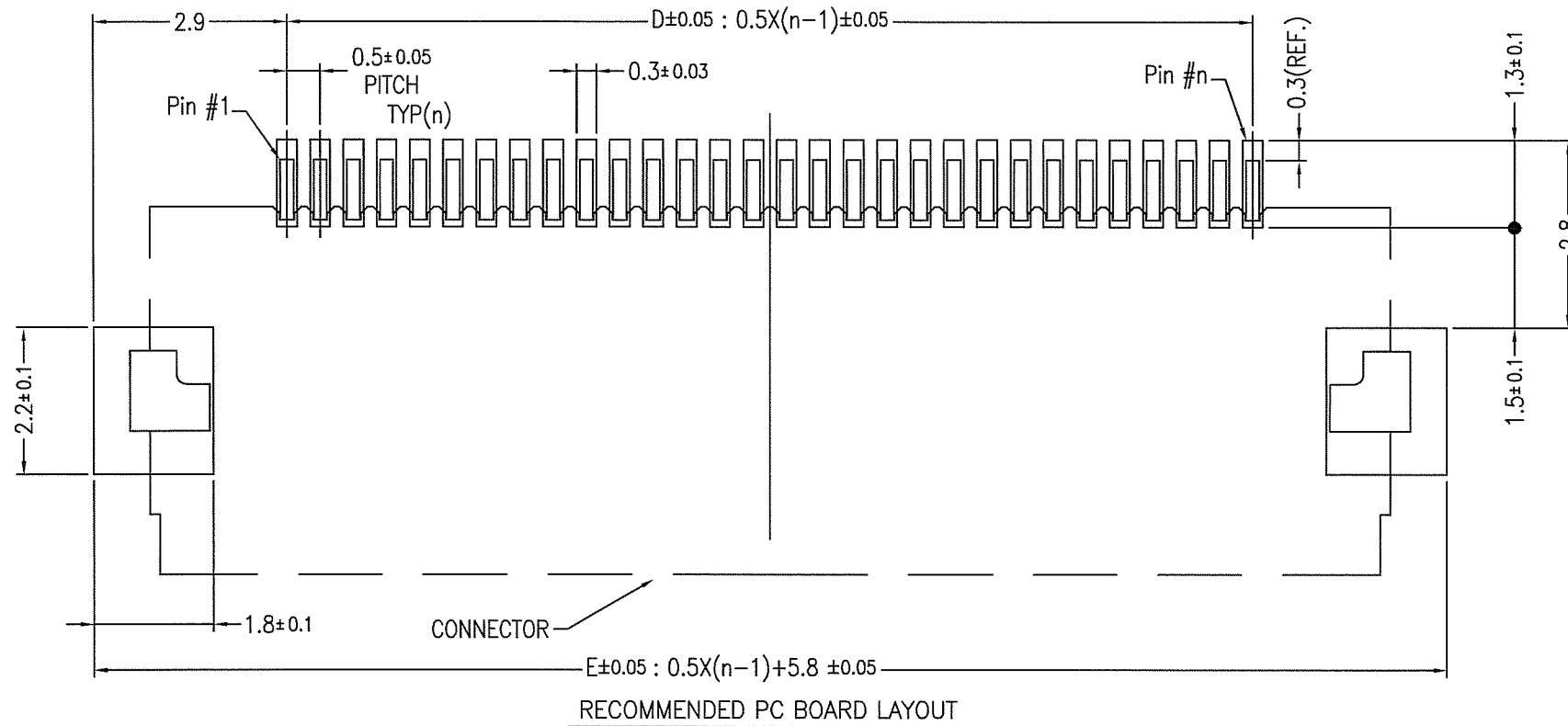


FCIconnect.com

Copyright FCI.

PRODUCT NO.

10085901-XX 1LF



RECOMMENDED FPC CONFIGURATION

NOTE

1.THICKNESS OF A METAL MASK: 0.1mm

2.FPC / FFC

ADHESIVE METHOD OF SUPPORTING TAPE SHALL BE HEAT CRIMPING METHOD AND THERMOSETTING ADHESIVE MATERIAL SHALL BE USED.

3.OTHER SPECIFICATIONS

PRODUCT SPECIFICATION : GS-12-541

APPLICATION SPECIFICATION : GS-20-105

PACKAGING SPECIFICATION : GS-14-1264

注記

1.メタルマスク厚 : 0.1mm

2.FPC / FFC

FPCの補強板接着剤には熱硬化接着剤を使用し、接着方式は熱圧着とする。

3.その他

製品規格 : GS-12-541

取り扱い説明書 : GS-20-105

梱包規格 : GS-14-1264

10085901-60 1LF	33.6	33.3	34.2	29.5	35.3	
P/N	A	B	C	D	E	

mat'l. code ---				surface ISO 1302	tolerance ISO 406 ISO 1101	projection MM	product family 59KF FLEX 0.5	CODE JP
ltr	description	ecn no	dr	date	tolerances unless otherwise specified	MM	title ASSEMBLY 0.5mm PITCH CONNECTOR FOR FPC VHC Series	
A	RELEASED	J08-0278	Y.K	2008-6-27	0.X ±0.2			
					0.XX ±0.2			
					0.XXX ±0.2	scale 10:1		
			dr	Y.KAMEDA	2008-6-27	FCI	dwg no.	sheet 3 of 3
			engr	Y.KAMEDA	2008-6-27		10085901	A3
			chr	J. Kameda	2008-6-27			
			appd	J. Kameda	2008-6-27			
sheet index	revision sheet						type	Product Customer Drawing
								Rev. A

form: A3

PDM: Rev:A

STATUS:Released

Printed: Jun 28, 2008