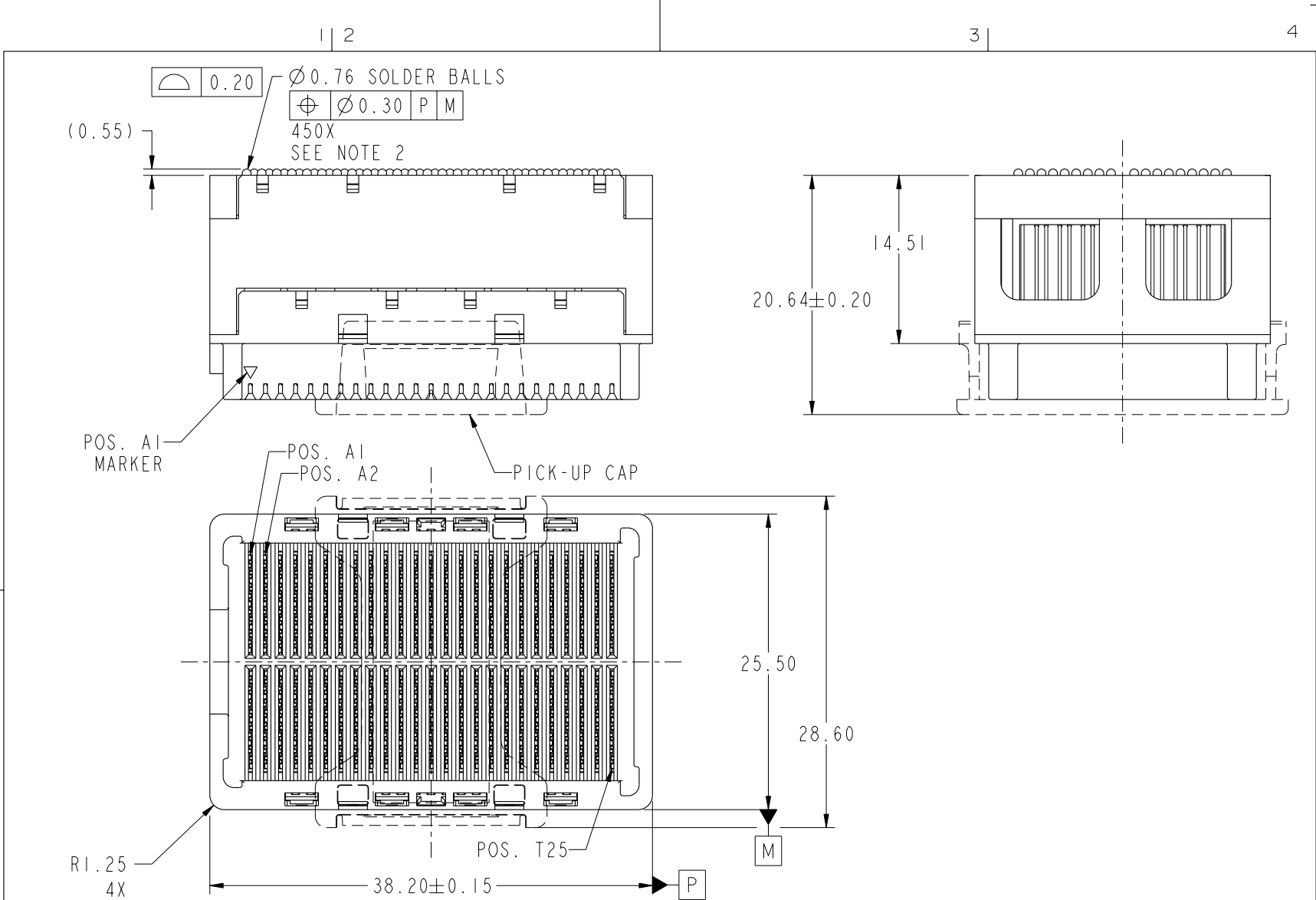


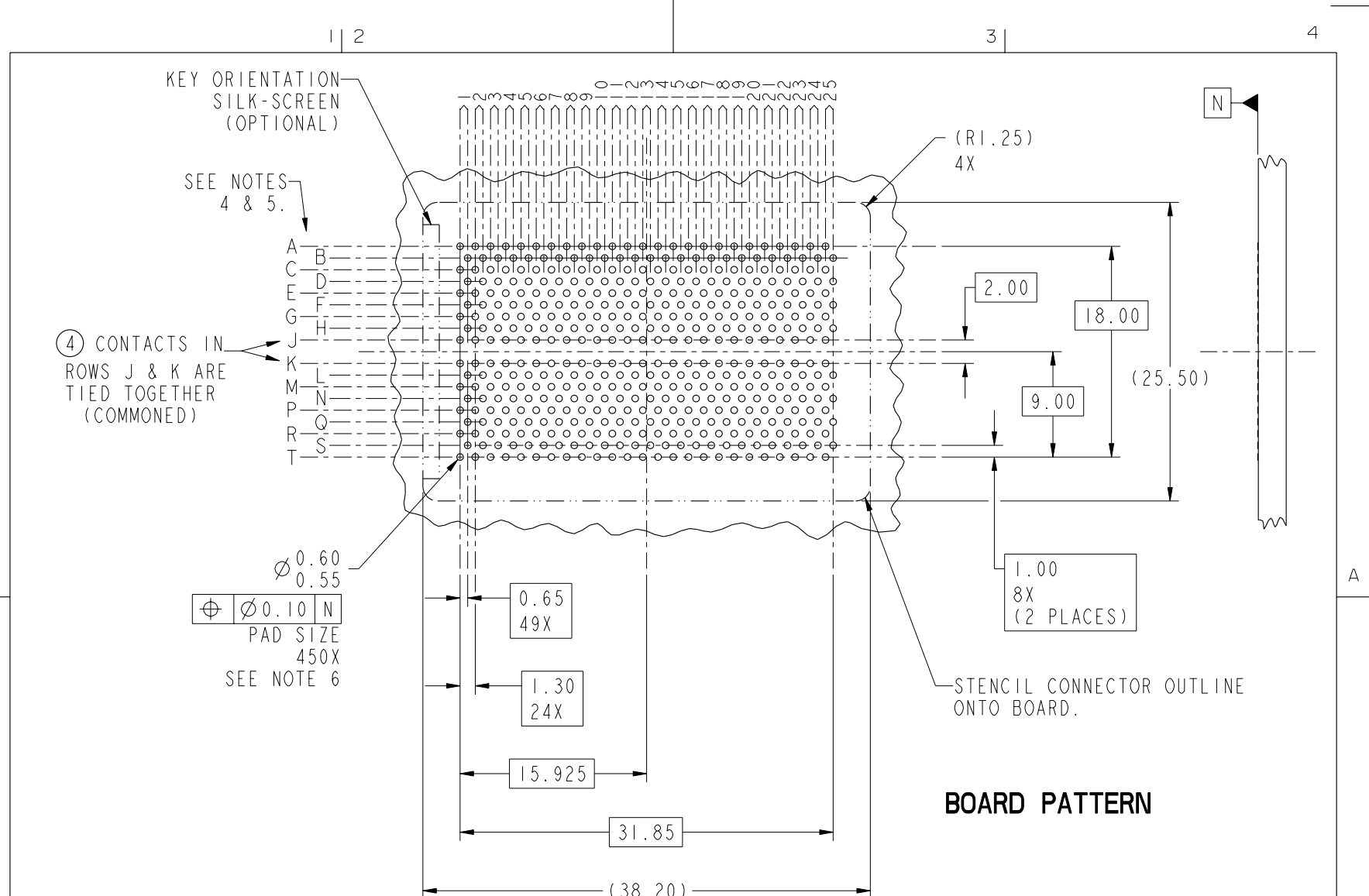


This document is the property of and embodies CONFIDENTIAL and PROPRIETARY information of FCI. No part of the information shown on this document may be used in any way or disclosed to others without the written consent of FCI. Copyright FCI.



mat'l code				0		tolerances unless otherwise specified		CUSTOMER		FCI www.fciconnect.com	
ltr	ecr no.	dr	date	linear	0.X ± 0.3		COPY		title GIG-Array - 15mm RECEPTACLE ASSY. 200 SIG. POS.		
A	V06-0394	LP	2006/05/02		0.XX ± 0.10		projection				
B	V07-0618	LP	2007/10/15	angles	0.XXX ± 0.050		MM		product family GIG-Array code 213		
					0° $\pm 2°$		scale 1:1		size A 10060912 sheet 1 of 4		
				dr	L.POTTEIGER	1/30/06					
				enrg	D.HARPER	1/25/06					
				chr	D.HARPER	1/30/06					
				appd	D.HARPER	1/30/06					
sheet index	revision sheet	B 1	B 2	B 3	B 4						

This document is the property of and embodies CONFIDENTIAL and PROPRIETARY information of FCJ. No part of the information shown on this document may be used in any way or disclosed to others without the written consent of FCJ. Copyright FCJ.



\varnothing 0.60
 \varnothing 0.55

\varnothing	0.10	N
---------------	------	---

 PAD SIZE
 450X
 SEE NOTE 6

BOARD PATTERN

mat'l code				SEE NOTE 1		tolerances unless otherwise specified		CUSTOMER		 www.fcjconnect.com		
ltr	ecn no.	dr	date	linear	0.X ±0.3		projection	COPY		title		
B					0.XX ±0.10				GIG-Array - 15mm RECEPTACLE		ASSY. 200 SIG. POS.	
					0.XXX ±0.050				product family		GIG-Array	
				angles	0° ±2°				size		213	
				dr	L.POTTEIGER	1/30/06	scale		A		sheet	
				enr	D.HARPER	1/25/06	2:1		10060912		2	
				chr	D.HARPER	1/30/06						
				appd	D.HARPER	1/30/06						
sheet index	revision sheet											

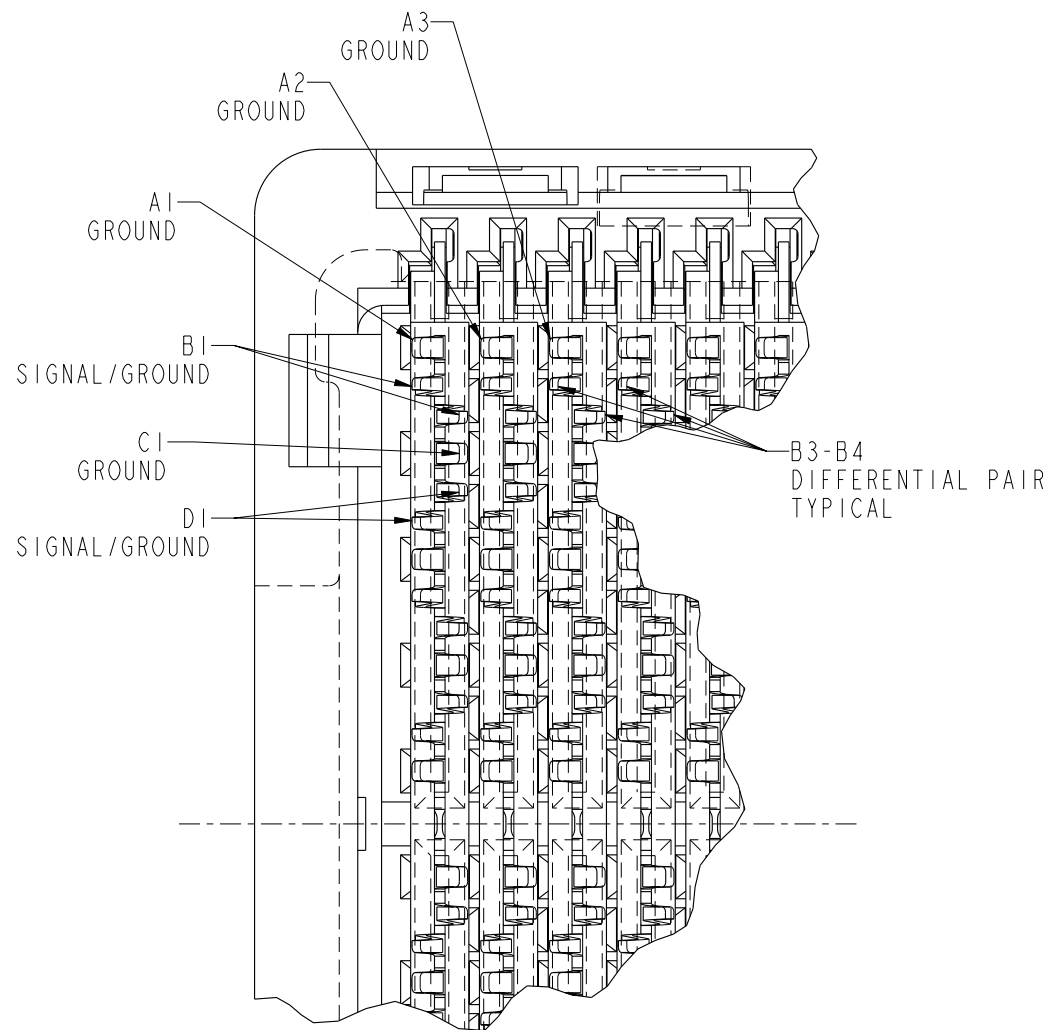
cage code 22526

Pro/E


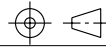
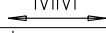
PDM: Rev:B

STATUS: **Released**

Printed: Feb 02, 2008



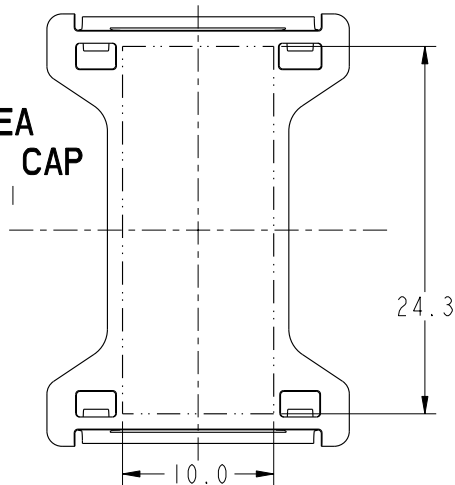
RECEPTACLE INTERFACE DESCRIPTION

mat'l code		SEE NOTE 1		tolerances unless otherwise specified		CUSTOMER		 www.fciconnect.com	
ltr	ecn no.	dr	date	linear	0.X ±0.3	COPY		title	
B					0.XX ±0.10	projection		GIG-Array - 15mm RECEPTACLE ASSY. 200 SIG. POS.	
				angles	0.XXX ±0.050			product family	
				dr	L.POTTEIGER 1/30/06	MM		GIG-Array	
				engr	D.HARPER 1/25/06			code	213
				chr	D.HARPER 1/30/06	scale		size	dwg no
				appd	D.HARPER 1/30/06	7:1		A	10060912
sheet index	revision sheet								sheet
									3

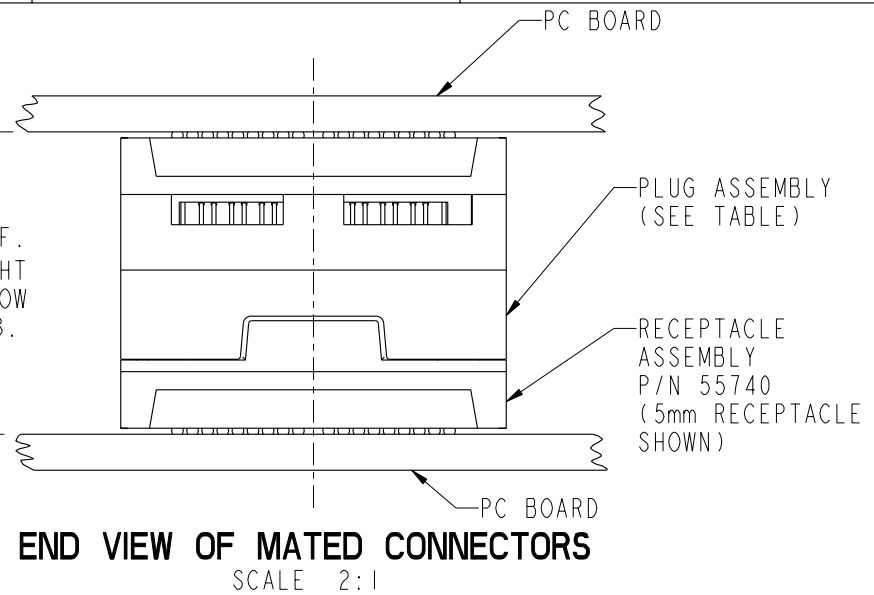
This document is the property of and embodies CONFIDENTIAL and PROPRIETARY information of FCI. No part of the information shown on this document may be used in any way or disclosed to others without the written consent of FCI. Copyright FCI.

PRODUCT NUMBER	SOLDER BALL
10060912-001	SnPb
10060912-001LF	SnAgCu LEADFREE SEE NOTE 7 & 8

FLAT AREA FOR PICK-UP CAP
SCALE 2:1



DIM "A" REF. MATED HEIGHT AFTER REFLOW SEE NOTE 3.



NOTES:

- ① MATERIAL:
HOUSING: LCP
CONTACT: COPPER ALLOY
PLATING (CONTACT): Au OVER Ni.
UL RATING: 94 V-0
SOLDERBALL: (SEE TABLE) EUTECTIC SnPb OR LEAD FREE 95.5 Sn/4Ag/0.5Cu.
- ② SOLDER BALLS WILL NOT BE PERFECT SPHERICAL SHAPE DUE TO REFLOW ATTACHMENT.
- ③ MATED HEIGHT EFFECTED BY CUSTOMERS' PCB PAD SIZE, PLATING, SOLDER REFLOW PROFILE & SOLDER PASTE.
- ④ CONTACTS IN ROWS A,C,E,G,J,K,M,P,R AND T ARE SINGLE BEAM CONTACTS, USED AS GROUND PINS.
(NOTE: CONTACTS IN ROWS J & K ARE TIED TOGETHER [COMMONED])
- ⑤ CONTACTS IN ROWS B,D,F,H,L,N,Q AND S ARE DUAL BEAM CONTACTS, TYPICALLY USED AS SIGNAL PINS.
- ⑥ SPECIFIED POSITIONAL TOLERANCE DEFINES PAD TO PAD LOCATION WITHIN LAND PATTERN. POSITIONAL TOLERANCE OF LAND PATTERN TO FUDICIAL MARKS OR PCB DATUMS SHALL BE DEFINED BY CUSTOMER. FOR RECOMMENDED PRODUCT APPLICATION AND PCB DESIGN DETAILS, SEE DOC. NO. GS-20-016.

- ⑦ FOR PROPER APPLICATION FOLLOW FCI APPLICATION SPECIFICATION GS-20-033. LEAD FREE SOLDER BALLS WILL NOT SOLDER PROPERLY IN A LEADED SOLDER PROCESS DUE TO A HIGHER REFLOW TEMPERATURE. LEADFREE PRODUCT IS THEREFORE NOT BACKWARDS COMPATIBLE WITH LEADED OR SOME SOLDERING APPLICATIONS. REFERENCE FCI APPLICATION SPECIFICATION.
- ⑧ THIS PRODUCT MEETS THE EUROPEAN UNION DIRECTIVES AND OTHER COUNTRY REGULATIONS AS DESCRIBED IN GS-22-008. PRODUCT MEETING THIS DIRECTIVE IS IDENTIFIED IN THE CODE NUMBER MARKED ON EACH PART BY HAVING AN "X" IN THE SEVENTH CHARACTER POSITION.

DIM. "A"	PLUG ASSEMBLY P/N
25	55737
27	10026802
28	10055142
30	55738
35	55739
40	10054783

mat'l code				SEE NOTE 1		tolerances unless otherwise specified		CUSTOMER		FCI www.fciconnect.com	
ltr	ecr no.	dr	date	linear	0.X ±0.3	projection		COPY		title GIG-Array - 15mm RECEPTACLE ASSY. 200 SIG. POS.	
B				angles	0.XX ±0.10	MM		product family GIG-Array		code 213	
				dr	0.XXX ±0.050	← MM →		size		sheet 4	
				engr	0° ±2°	scale 2:1		A		10060912	
				chr	L.POTTEIGER 1/30/06						
				appd	D.HARPER 1/25/06						
					D.HARPER 1/30/06						
					D.HARPER 1/30/06						
sheet index	revision sheet									cage code	22526

This document is the property of and embodies CONFIDENTIAL and PROPRIETARY information of FCI. No part of the information shown on this document may be used in any way or disclosed to others without the written consent of FCI. Copyright FCI.