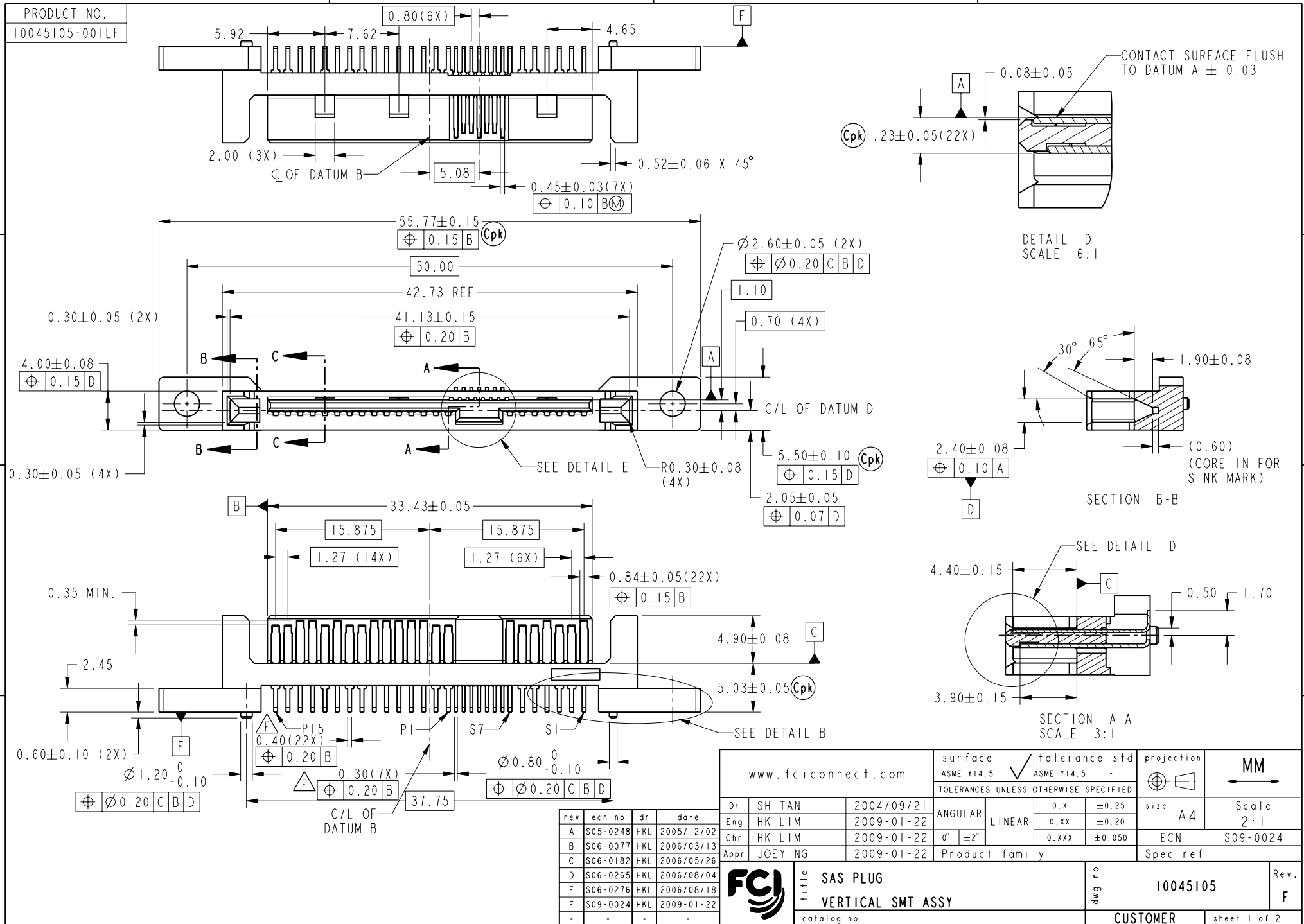




Copyright FCI.



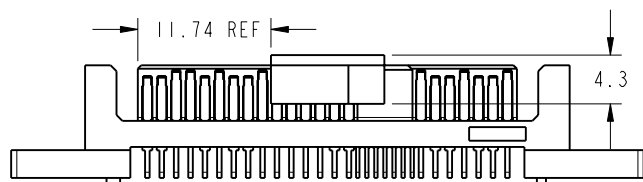
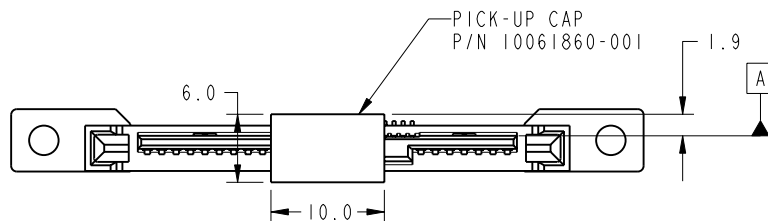
REV E - 2009-03-28

PDM: Rev:F

STATUS:Released

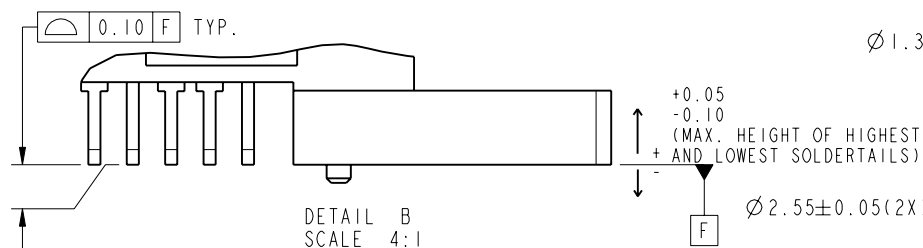
Printed: Feb 05, 2009

PRODUCT NO	WITH PICK-UP CAP	PACKAGING
10045105-001LF	NO	TRAY
10045105-001CLF	YES	
10045105-001C-TRLF		TAPE & REEL




SCALE 3:2

WITH PICK-UP CAP ATTACHED

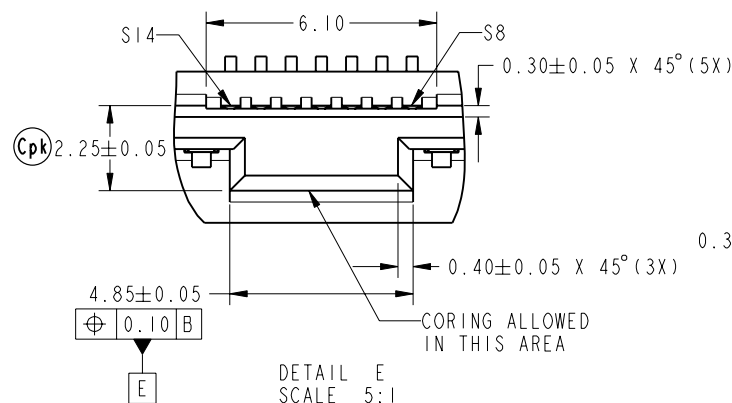


DETAIL B
SCALE 4:1

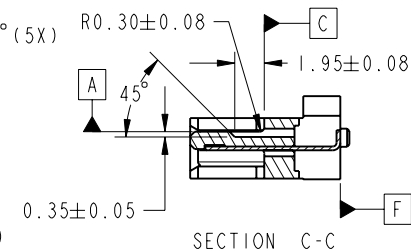
NOTES:

- MATERIAL:
HOUSING: HIGH TEMPERATURE PLASTIC, BLACK, UL94V-0
CONTACT: COPPER ALLOY
- FINISH:
1.27um MIN NICKEL UNDERPLATE OVERALL,
2.54um MIN TIN (LEAD-FREE) ON SOLDER TAIL,
0.76um MIN GOLD ON CONTACT AREA
- THIS PRODUCT MEETS EUROPEAN UNION DIRECTIVES AND OTHER COUNTRY REGULATIONS AS DESCRIBED IN GS-22-008
- THE HOUSING WILL WITHSTAND EXPOSURE TO 260°C PEAK TEMPERATURE FOR 10 SECONDS IN A CONVECTION, INFRA-RED OR VAPOR PHASE REFLOW OVEN
- COPLANARITY FROM SEATING PLANE: 0.1mm MAX.
- PART WITH PICK-UP CAP, P/N XXXXXXXX-XXXCLF
- FOR TAPE & REEL PACKAGING, P/N XXXXXXXX-XXXC-TRLF
- A SYMBOL  WILL BE NEXT TO ANY DIMENSION, VIEW OR NOTE WHICH HAS BEEN MODIFIED WITH THE CURRENT DRAWING REVISION

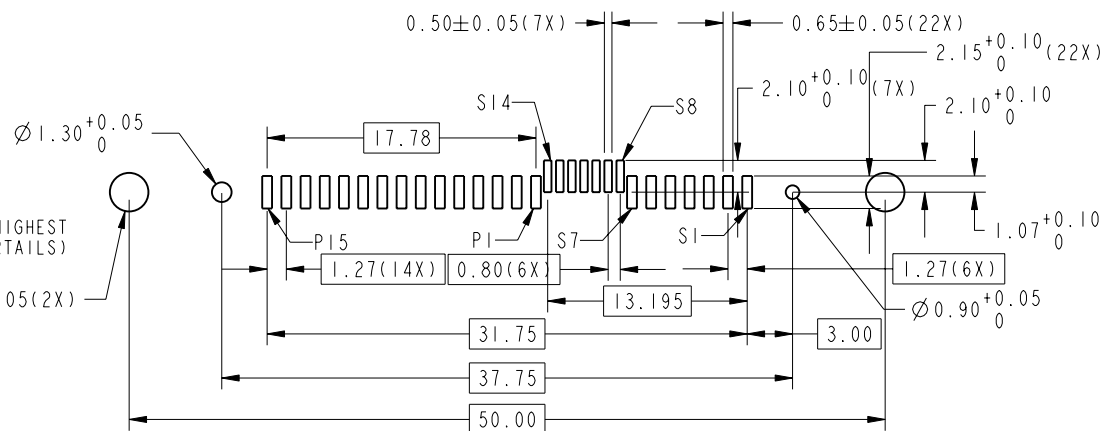
REV E - 2006-03-28



DETAIL E
SCALE 5:1



SECTION C-C



RECOMMENDED SOLDER PAD LAYOUT

SCALE 2:1



title
SAS PLUG
VERTICAL SMT ASSY

catalog no

dwg no

10045105

Rev.

F

CUSTOMER

sheet 2 of 2

3 PDM: Rev:F

STATUS:Released

4 Printed: Feb 05, 2009