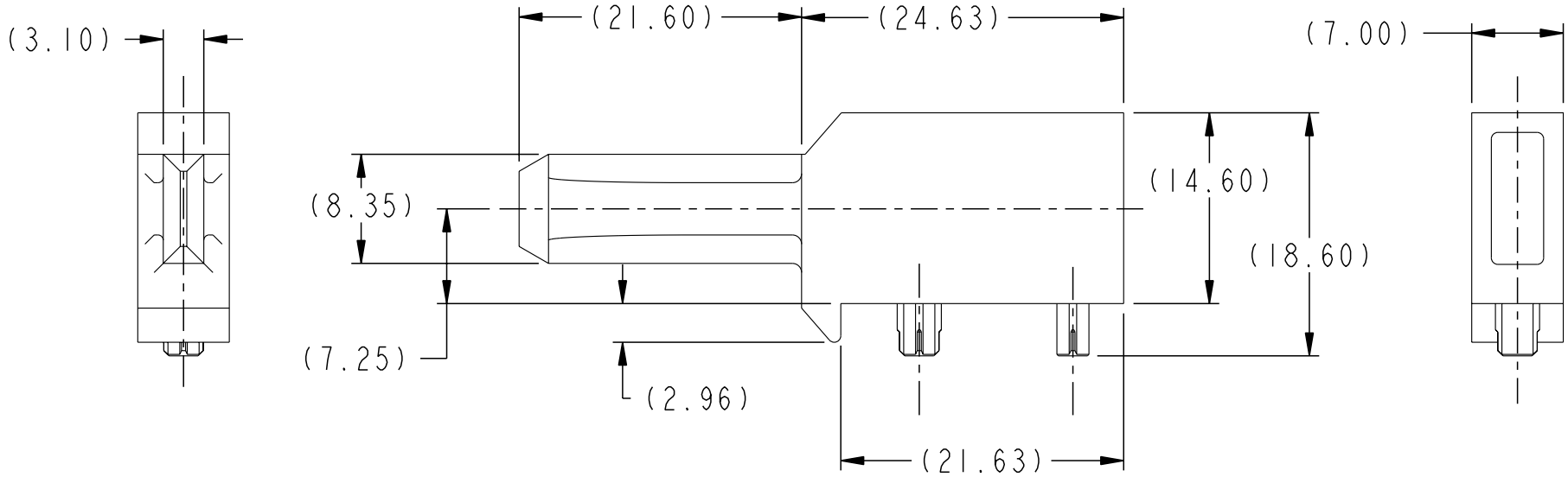


Tous droits strictement reserves. Reproduction ou communication a des tiers interdite sous quelque forme que ce soit sans autorisation écrite du propriétaire. Propriete de c FCI. Droits de reproduction FCI.

FCI

All rights strictly reserved. Reproduction or issue to third parties in any form whatever is not permitted without written authority from the proprietor. Property of FCI. Copyright FCI.



M3 x 0.5-6H
x 3.0 DP.

rev	ecn no	dr	date
A	V05-0557	AR	06/07/05
-	-	-	-
-	-	-	-
-	-	-	-
-	-	-	-
-	-	-	-

FCI		www.fciconnect.com		surface <input checked="" type="checkbox"/>	tolerance ASME Y14.5	projection	mm
Dr	T. HOUTZ	12/15/04	Product family	AirMax ACCESSORIES		size	A4
Eng	H. NGO	12/15/04	Spec ref			Scale	2:1
Chr	H. NGO	12/15/04	Material	SEE NOTES 1 & 2		ECN	NEW
Appr	H. NGO	12/15/04					
title				7.2mm R/A GUIDE PIN 4/5 Pr.		dwg no	10044314
catalog no						Rev.	A
				CUSTOMER		sheet 1 of 2	

PDM: Rev:A

STATUS:Released

4 Printed: Feb 14, 2006

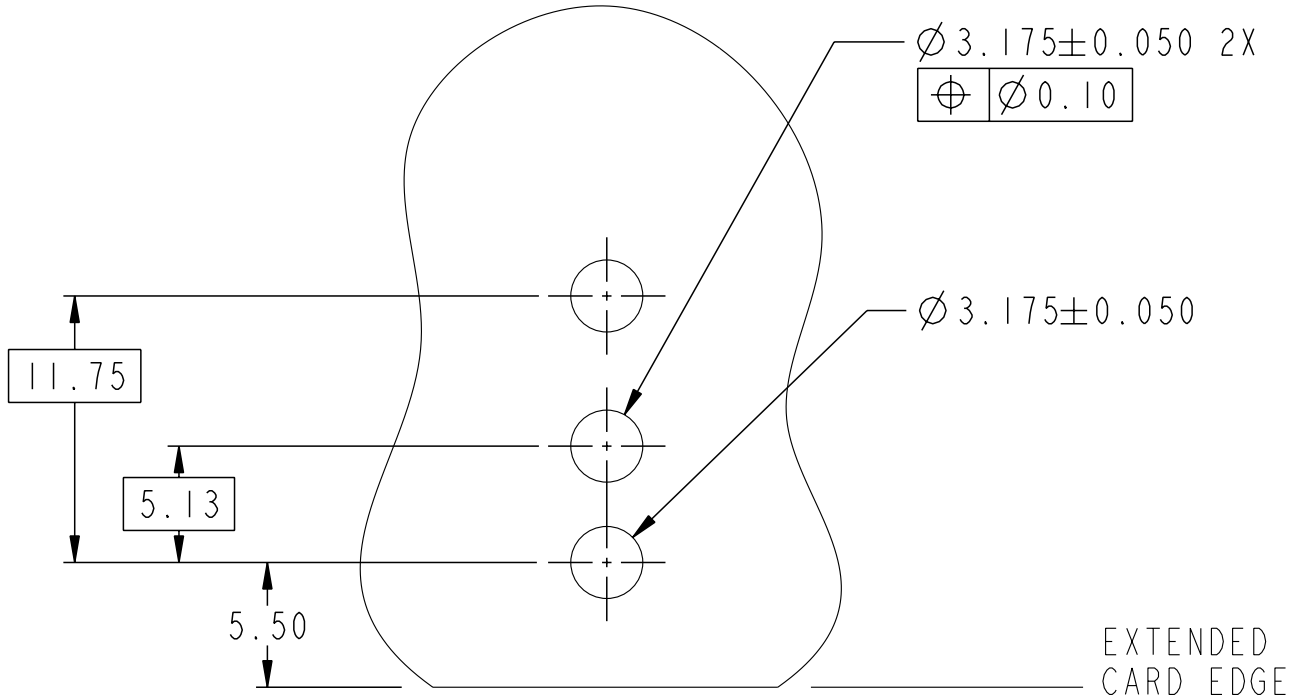
Tous droits strictement reserves. Reproduction ou communication a des tiers interdite sous quelque forme que ce soit sans autorisation écrite du propriétaire. Propriete de c FCI. Droits de reproduction FCI.

A
FCI

All rights strictly reserved. Reproduction or issue to third parties in any form whatever is not permitted without written authority from the proprietor. Property of FCI. Copyright FCI.

PART NUMBER

10044314-101LF



RECOMMENDED PCB LAYOUT

SCALE 3:1

SEE NOTE 3, 4, & 5

- NOTES:
- ① MATERIAL: ZINC ALLOY.
 - ② FINISH: ZINC YELLOW CHROMATE.
 - ③ PRELIMINARY APPLICATION SPECIFICATION: GS-20-045.
 - ④ REFER TO CUSTOMER DRAWING 10035911 FOR INFORMATION REGARDING PCB LAYOUT OF POWER AND GUIDE MODULES RELATIVE TO SIGNAL MODULES.
 - ⑤ RIGHT ANGLE PIN MODULE HAS THE SAME PCB FOOTPRINT AS THE RIGHT ANGLE GUIDE SOCKET.
 - 6 THIS PRODUCT MEETS EUROPEAN UNION DIRECTIVES AND OTHER COUNTRY REGULATIONS AS DESCRIBED IN GS-22-008.
 - 7 PACKAGING MEETS GS-14-920 LEAD FREE LABELING SPECIFICATION.

title	7.2mm R/A GUIDE PIN 4/5 Pr.	dwg no	10044314	Rev.	A
catalog no	-	CUSTOMER	sheet 2 of 2		

PDM: Rev:A

STATUS:Released

4 Printed: Feb 14, 2006