

1

2

3

4

PRODUCT NUMBER
SEE TABLE, SHEET 5

A

B

C

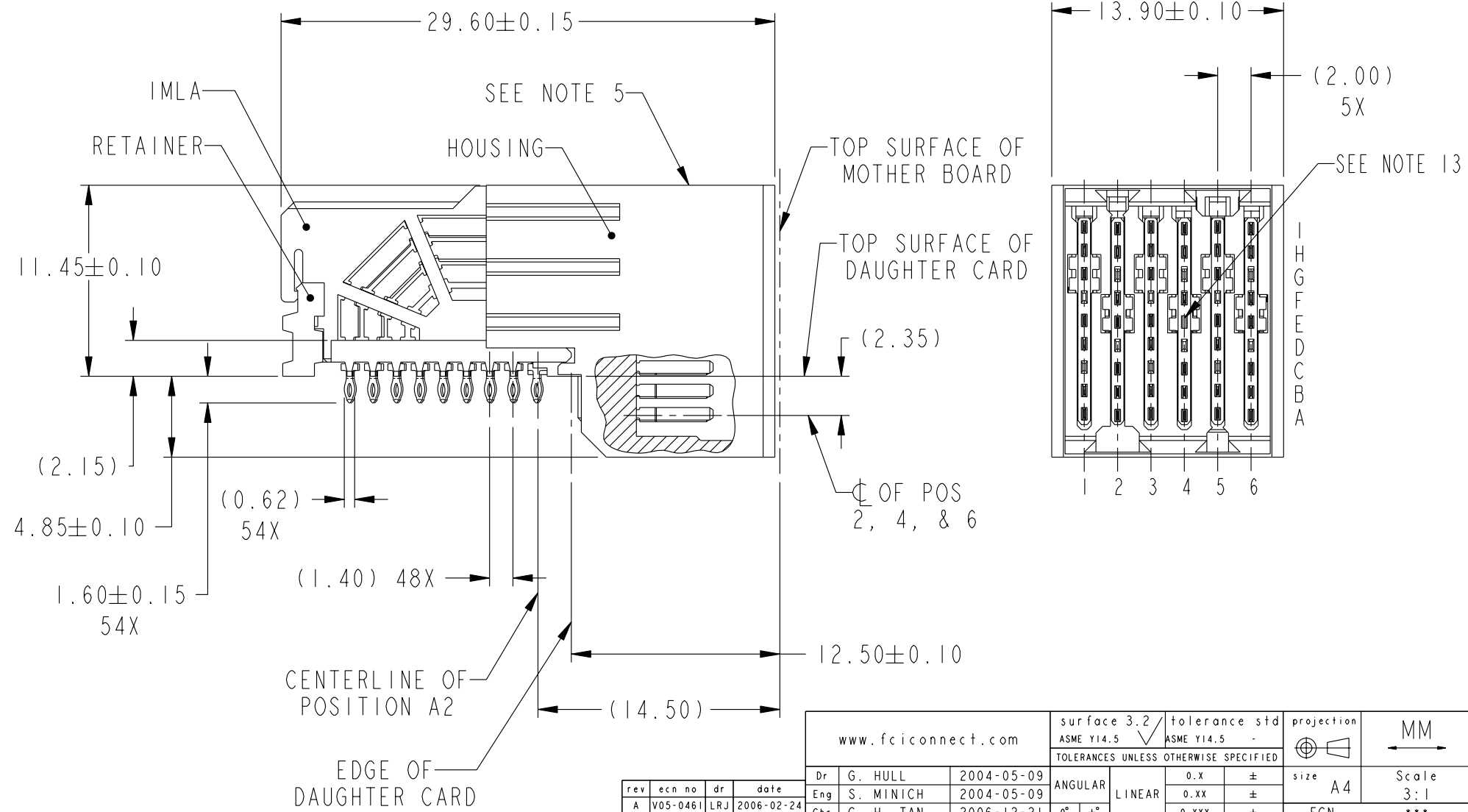
D

A

B

C

D



rev	ecn no	dr	date
A	V05-0461	LRJ	2006-02-24
B	V06-0209	LRJ	2006-03-01
C	V06-0531	SCS	2006-06-07
D	S06-0374	DG	2006-12-21
-	-	-	-
-	-	-	-
-	-	-	-

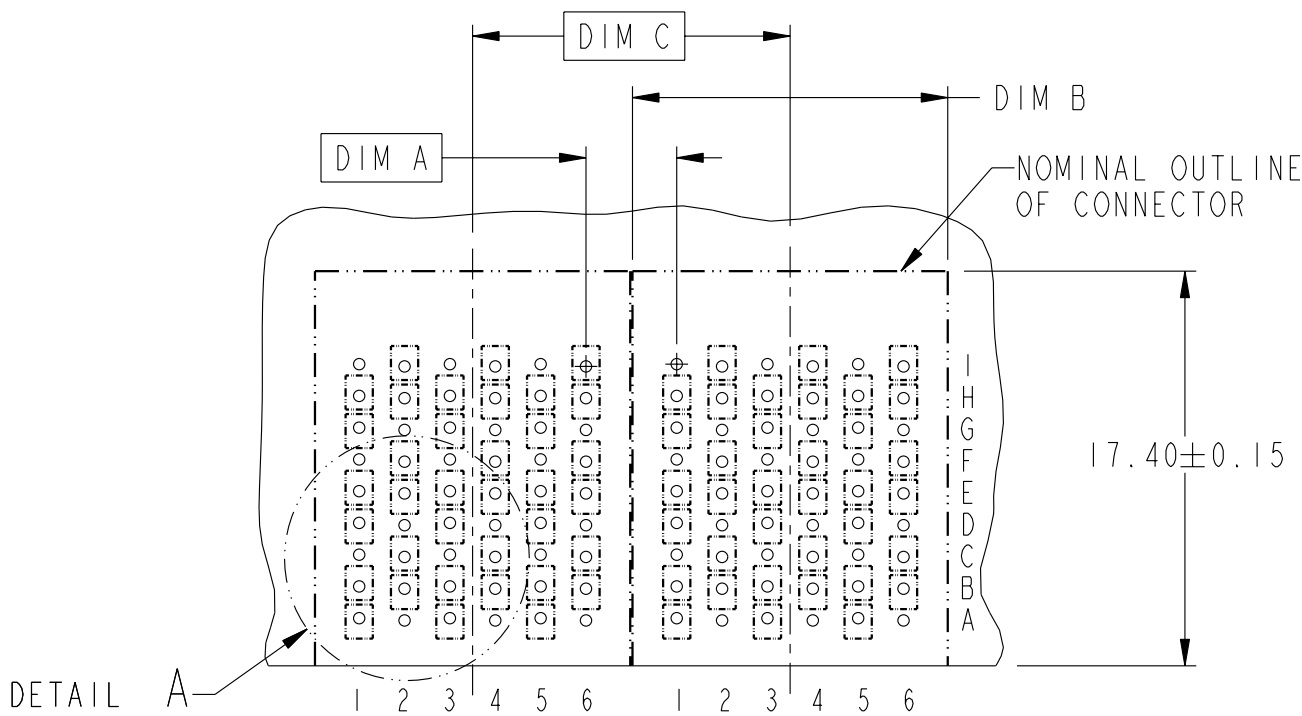
www.fciconnect.com			surface 3.2 ASME Y14.5	tolerance std ASME Y14.5	projection MM	size A4		Scale 3:1
TOLERANCES UNLESS OTHERWISE SPECIFIED			ANGULAR	LINEAR	0.X ±	ECN ***		
Dr	G. HULL	2004-05-09	0° ±	0.XX ±	Product family AirMax VS		Spec ref	
Eng	S. MINICH	2004-05-09			Customer		sheet 1 of 5	
Chr	C. H. TAN	2006-12-21			Title		Rev.	
Appr	JOEY NG	2006-12-21			AirMax VS R/A HEADER ASSY		D	
					PRESS-FIT, 54 POS, 14MM			
					catalog no			
					10039851			

REV F - 2006-04-17




Copyright FCI.

DESCRIPTION	DIM A	DIM B	DIM C
2-14MM MODULES PLACED END-TO-END	4.00	13.90 2X	14.00
1-12MM MODULE & 1-14MM MODULE PLACED END-TO-END	3.00	11.90 1X & 13.90 1X	13.00



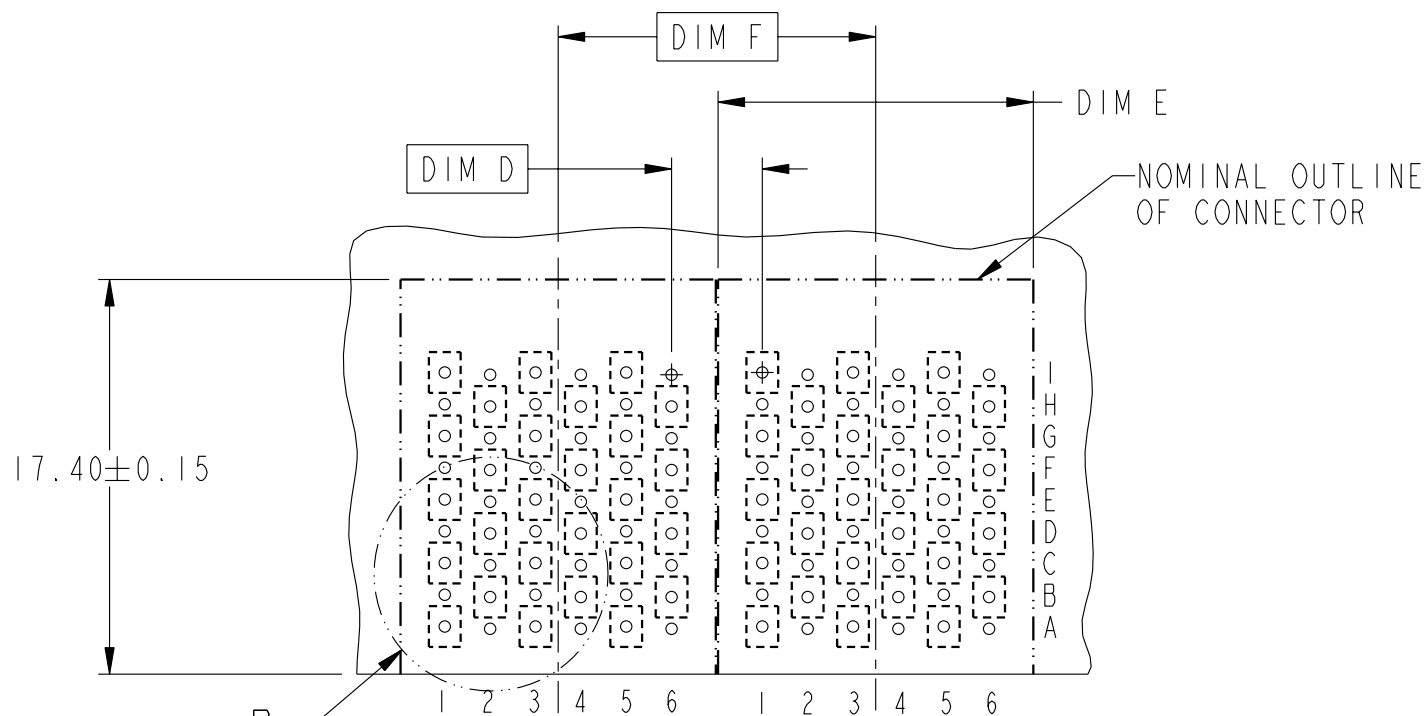
RECOMMENDED PCB LAYOUT
FOR DIFFERENTIAL APPLICATIONS
COMPONENT SIDE
(TWO ADJACENT FOOTPRINTS SHOWN)
NOTES 6 & 7

	title	AirMax VS R/A HEADER ASSY		dwg no	10039851	Rev.	D
		PRESS-FIT, 54 POS, 14MM					
	catalog no	-		CUSTOMER		sheet 2 of 5	



Copyright FCI.

DESCRIPTION	DIM D	DIM E	DIM F
2-14MM MODULES PLACED END-TO-END	4.00	13.90 2X	14.00
1-12MM MODULE & 1-14MM MODULE PLACED END-TO-END	3.00	11.90 1X & 13.90 1X	13.00



RECOMMENDED PCB LAYOUT
FOR SINGLE ENDED APPLICATIONS
COMPONENT SIDE
(TWO ADJACENT FOOTPRINTS SHOWN)
NOTES 6 & 7

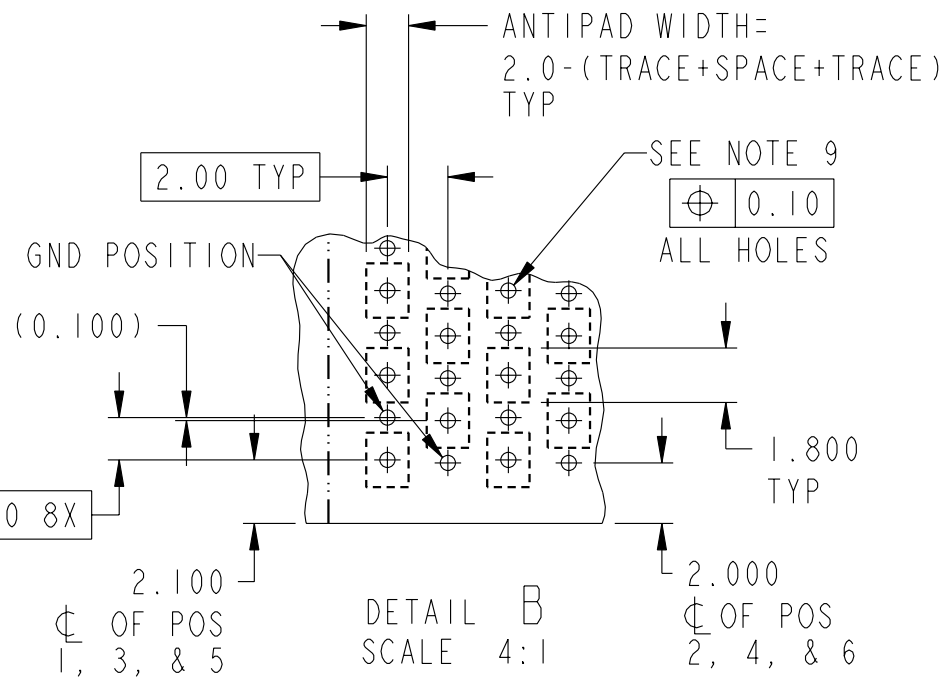
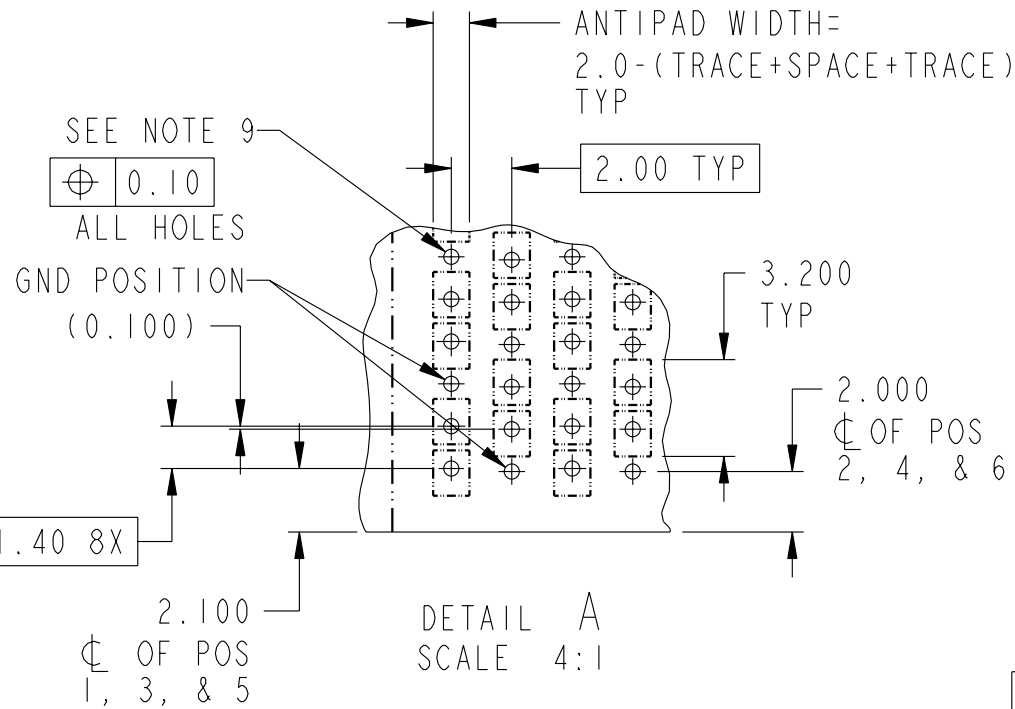


title AirMax VS R/A HEADER ASSY
PRESS-FIT, 54 POS, 14MM
catalog no -

dwg no 10039851
Rev. D
CUSTOMER sheet 3 of 5



Copyright FCI.



title AirMax VS R/A HEADER ASSY
PRESS-FIT, 54 POS, 14MM
catalog no -

dwg no 10039851

Rev.
D

CUSTOMER sheet 4 of 5

PART NUMBER	PRESS-FIT TAIL PLATING TYPE	SHORT DETECT CONTACT
10039851-101	TIN/LEAD ALLOY OVER NICKEL	NO
10039851-101LF	TIN OVER NICKEL (LEAD FREE)	
10039851-111	TIN/LEAD ALLOY OVER NICKEL	YES (SEE NOTE 13)
10039851-111LF	TIN OVER NICKEL (LEAD FREE)	

NOTES:

- CONNECTOR MATERIALS:
HOUSING & RETAINER: HIGH TEMP THERMOPLASTIC, NATURAL, UL94V-0
IMLA PLASTIC: HIGH TEMP THERMOPLASTIC, BLACK, UL94V-0
CONTACT: COPPER ALLOY

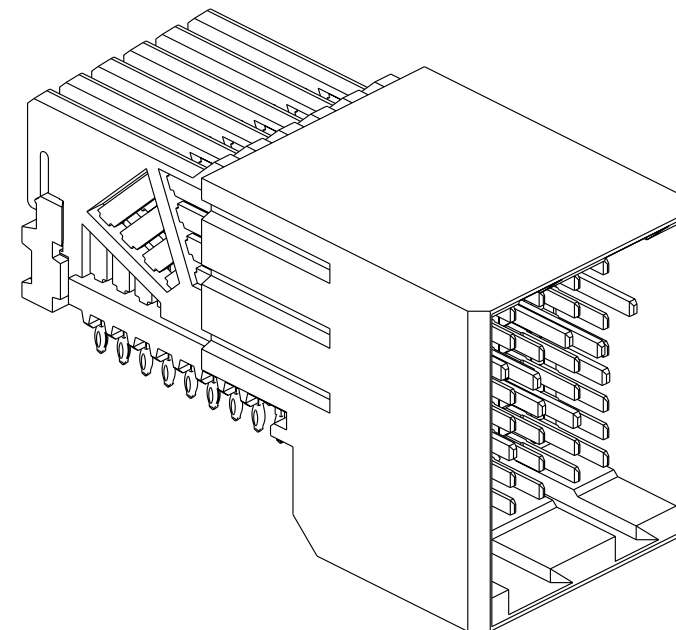
- CONTACT PLATING:
SEPARABLE INTERFACE:
PERFORMANCE-BASED PLATING, QUALIFIED TO MEET THE REQUIREMENTS OF FCI PRODUCT SPECIFICATION GS-12-239 INCLUDING TELCORDIA GR-1217-CORE (NOVEMBER 1995)
CENTRAL OFFICE TEST SEQUENCE

PRESS-FIT TAILS: SEE TABLE

- PRODUCT SPECIFICATION: GS-12-239

- APPLICATION SPECIFICATION: GS-20-035

- PRODUCT MARKING, (PART NUMBER & LOT CODE), ON THIS SURFACE
- REFER TO CUSTOMER DRAWING 10035911 FOR INFORMATION REGARDING PCB LAYOUT OF POWER AND GUIDE MODULES RELATIVE TO SIGNAL MODULES
- POSITIONS F OF ODD NUMBERED COLUMNS AND POSITIONS G OF EVEN NUMBERED COLUMNS CORRESPOND TO EARLY MATE HEADER PINS
- THERE IS NO GROUND BUSSING WITHIN THE CONNECTOR SYSTEM
- REFER TO CUSTOMER DRAWING 10045979 FOR INFORMATION ON PCB HOLE DIAMETERS AND PLATING OPTIONS.



- LEAD FREE PRODUCT MEETS EUROPEAN UNION DIRECTIVES AND OTHER COUNTRY REGULATIONS AS DESCRIBED IN GS-22-008.
- THE HOUSING WILL WITHSTAND EXPOSURE TO 260°C PEAK TEMPERATURE FOR 40 SECONDS IN A CONVECTION, INFRA-RED OR VAPOR PHASE REFLOW OVEN.
- PACKAGING MEETS GS-14-920 LEAD FREE LABELING SPECIFICATION.
- MATING PIN E4 HAS 0.5mm LESS NOMINAL WIPE THAN THE SHORTEST SIGNAL PIN.

FCI	title	AirMax VS R/A HEADER ASSY	dwg no	10039851	Rev.	D
	catalog no	PRESS-FIT, 54 POS, 14MM	-	CUSTOMER	sheet 5 of 5	