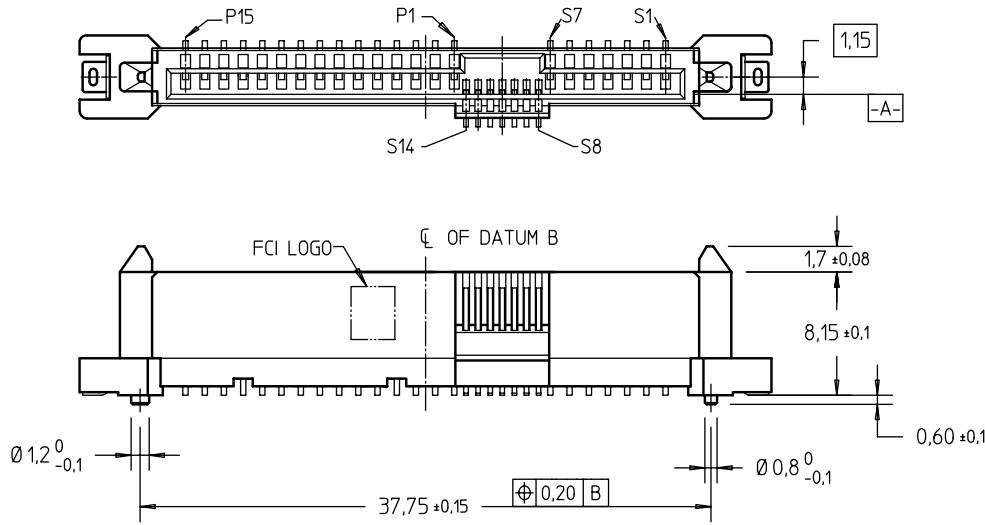


PRODUCT NO	METAL CLIP	REMARKS
10036355-002LF	2 PCS	⑧.⑨
10036355-002CLF		④.⑧.⑨
10036355-002C-TRLF		④.⑥.⑧.⑨



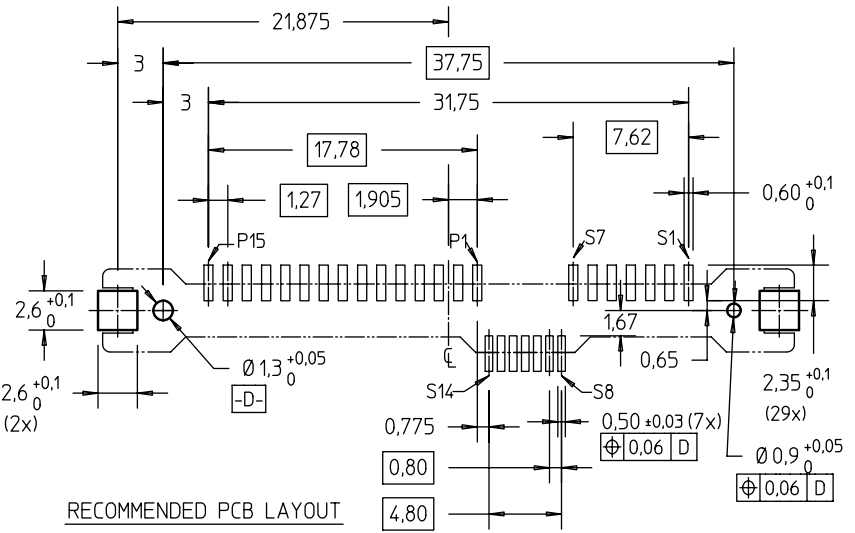
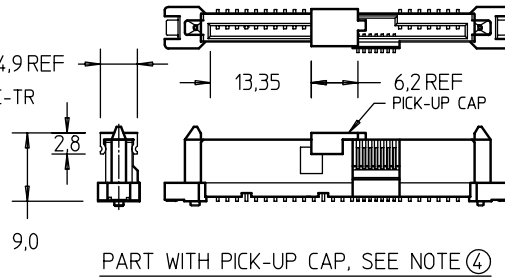
NOTES:
ALL OTHER DIMENSIONS, REFER TO SHEET 1.

NOTES: (cont'd)

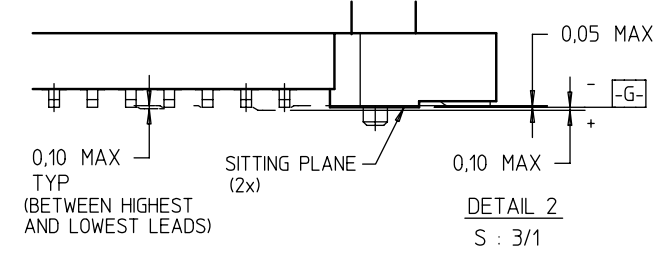
- 7 THE HOUSING WILL WITHSTAND EXPOSURE TO 260°C PEAK TEMPERATURE FOR 10 SECONDS IN A CONVECTION, INFRA-RED OR VAPOR PHASE REFLOW OVEN.
- ⑧ THIS PRODUCT MEETS EUROPEAN UNION DIRECTIVES AND OTHER COUNTRY REGULATIONS AS DESCRIBED IN GS-22-008.
- ⑨ PART NUMBERS ENDING IN "LF" MEANS FOR NOTE 8 LEAD FREE IDENTIFICATION.

THE EQUIVALENT P/N FOR "LF" DESIGNATION :

- (i) XXXXXXXX-XXXLF IS SAME AS XXXXXXXX-XXX
- (ii) XXXXXXXX-XXXCLF IS SAME AS XXXXXXXX-XXXC 4,9 REF
- (iii) XXXXXXXX-XXXC-TRLF IS SAME AS XXXXXXXX-XXXC-TR



RECOMMENDED PCB LAYOUT



DETAIL 2
S : 3/1

mat'l. code				surface ISO 1302	tolerance ISO 406 ISO 1101	projection mm	product family SAS
ltr	ecn no	dr	date	tolerances unless otherwise specified		mm	title
F				angles ± 2°	linear = ± 0,20	scale 2 : 1	SAS RECEPTACLE VERTICAL SMT TYPE ASSY
				dr	GL L00	2004-04-20	dwg no
				enrg	GL L00	2004-04-20	10036355
				chr	GL L00	2006-08-28	sheet 2 of 2 size
				appd	JOEY NG	2006-08-28	A4
sheet index	revision	sheet	1				type
							CUSTOMER
							Drawing