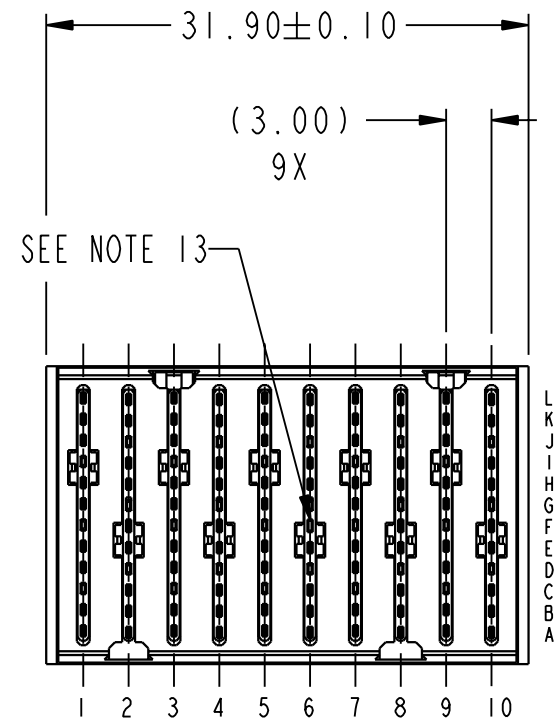
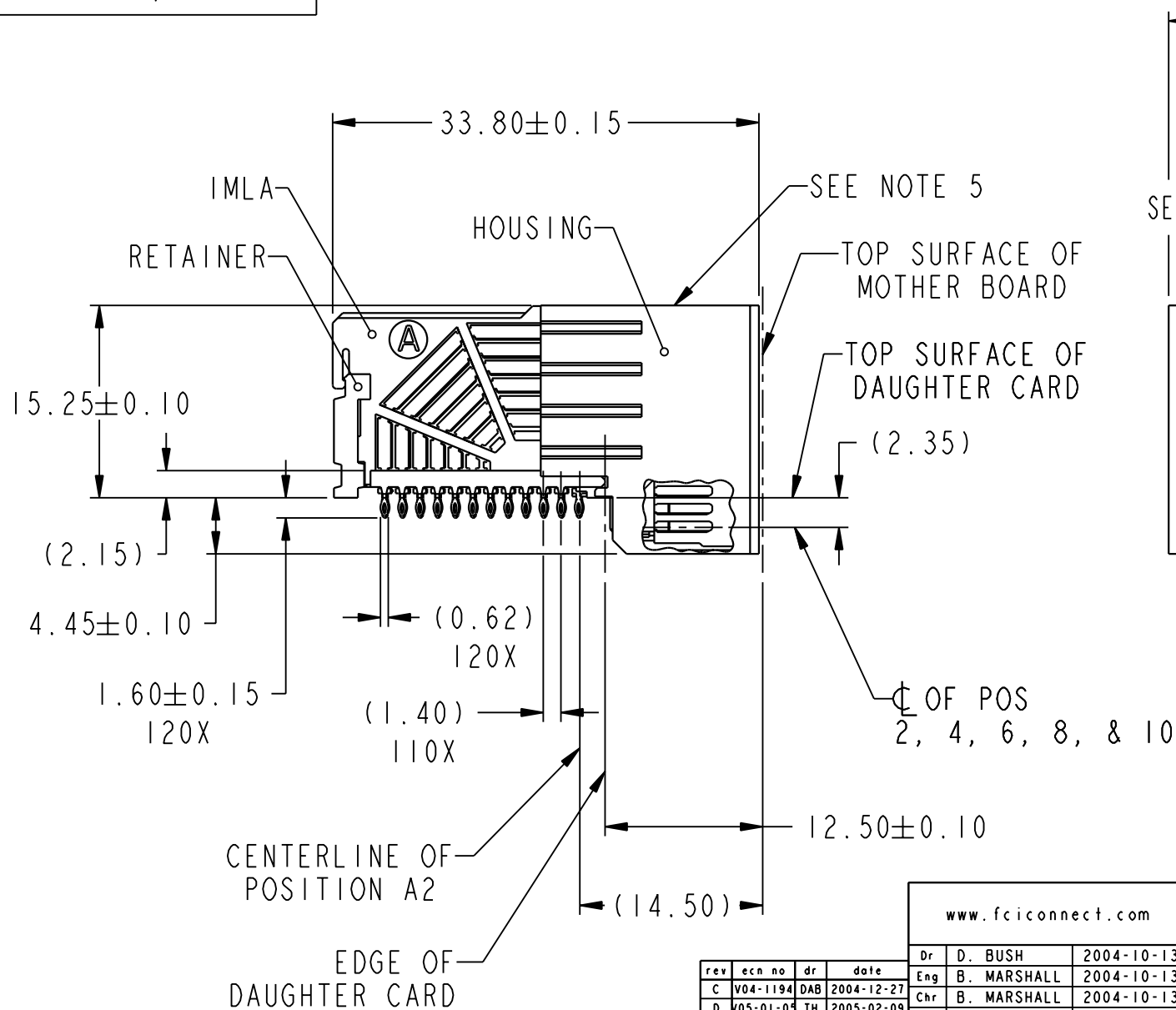




Copyright FCI.

Product number
SEE TABLE, SHEET 5



rev	ecn no	dr	date
C	V04-1194	DAB	2004-12-27
D	V05-01-05	TH	2005-02-09
E	V05-0226	MRS	2005-03-17
F	V05-0792	SAW	2005-08-18
G	V06-0209	LRJ	2006-03-01
H	V06-0531	SCS	2006-06-07
J	V06-0956	WJS	2006-09-13

www.fciconnect.com			surface 3.2 ASME Y14.5	tolerance std ASME Y14.5	projection MM
			TOLERANCES UNLESS OTHERWISE SPECIFIED		
Dr	D. BUSH	2004-10-13	ANGULAR 0° ±°	0.X ±	size A4
Eng	B. MARSHALL	2004-10-13		0.XX ±	Scale 2:1
Chr	B. MARSHALL	2004-10-13		0.XXX ±	ECN ***
Appr	B. MARSHALL	2004-10-13	Product family AirMax VS		Spec ref
FCI			title AirMax VS R/A HEADER ASSY PRESS-FIT, 120 POS, 32MM		Rev. J
			catalog no	10035515	sheet 1 of 5
			CUSTOMER		

REV F - 2006-04-17

3PDM: Rev:J

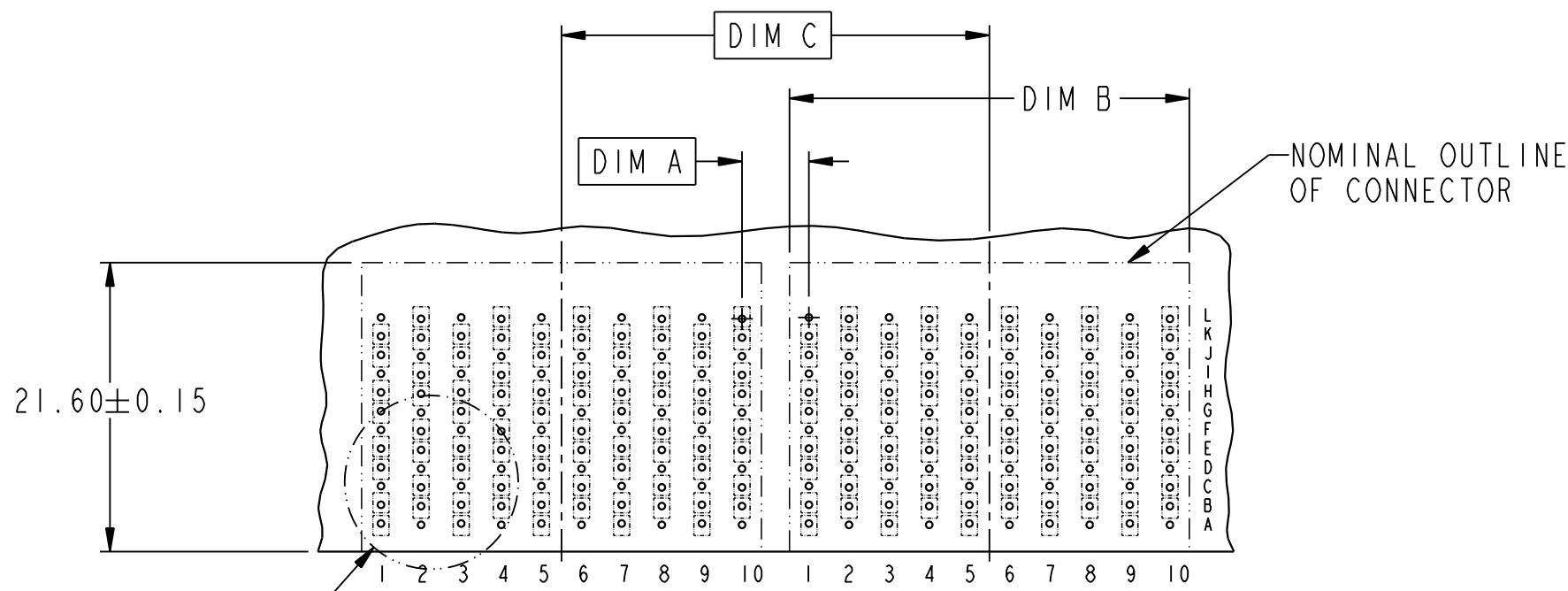
STATUSReleased

4 Printed: Apr 20, 2007



Copyright FCI.

DESCRIPTION	DIM A	DIM B	DIM C
2-32MM MODULES PLACED END-TO-END	5.00	31.90 2X	32.00
1-30MM MODULE & 1-32MM MODULE PLACED END-TO-END	4.00	29.90 1X & 31.90 1X	31.00



RECOMMENDED PCB LAYOUT
FOR DIFFERENTIAL APPLICATIONS
COMPONENT SIDE
(TWO ADJACENT FOOTPRINTS SHOWN)
NOTES 6 & 7

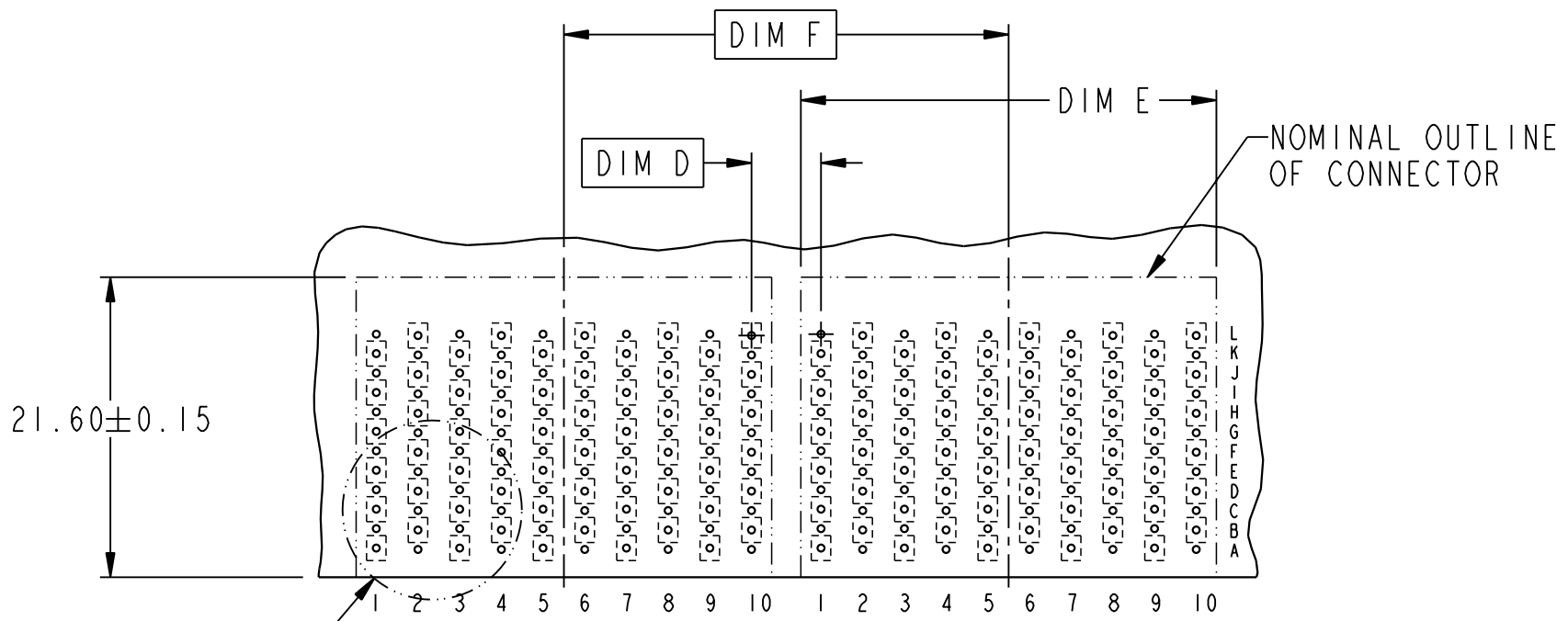


title	AirMax VS R/A HEADER ASSY	dwg no	10035515	Rev.	J
	PRESS-FIT, 120 POS, 32MM				
catalog no	-	CUSTOMER	sheet 2 of 5		




Copyright FCI.

DESCRIPTION	DIM D	DIM E	DIM F
2-32MM MODULES PLACED END-TO-END	5.00	31.90 2X	32.00
1-30MM MODULE & 1-32MM MODULE PLACED END-TO-END	4.00	29.90 1X & 31.90 1X	31.00



DETAIL B

RECOMMENDED PCB LAYOUT
FOR SINGLE ENDED APPLICATIONS
COMPONENT SIDE
(TWO ADJACENT FOOTPRINTS SHOWN)
NOTES 6 & 7

	title		AirMax VS R/A HEADER ASSY		dwg no	10035515	Rev. J
			PRESS-FIT, 120 POS, 32MM				
	catalog no		-		CUSTOMER		sheet 3 of 5



Copyright FCI.

REV 1 - 2000-04-17

SEE NOTE 9
 \varnothing 0.10
ALL HOLES
GND POSTION
(0.100)

1.40 IIX

2.100
CL OF POS
1, 3, 5, 7, & 9

DETAIL A
SCALE 4:1

ANTIPAD WIDTH =
 $3.0 - (4 \text{ TRACES} + 3 \text{ SPACES})$
TYP

3.00 TYP

3.200
TYP

2.000
CL OF POS
2, 4, 6, 8, & 10

GND POSITION
(0.100)

1.40 IIX

2.100
CL OF POS
1, 3, 5, 7, & 9

DETAIL B
SCALE 4:1

ANTIPAD WIDTH =
 $3.0 - (4 \text{ TRACES} + 3 \text{ SPACES})$
TYP

3.00 TYP

SEE NOTE 9
 \varnothing 0.10
ALL HOLES

1.800 TYP

2.000
CL OF POS
2, 4, 6, 8, & 10



title AirMax VS R/A HEADER ASSY
PRESS-FIT, 120 POS, 32MM
catalog no -

dwg no 10035515
Rev. J
CUSTOMER sheet 4 of 5



Copyright FCI.

PART NUMBER	PRESS-FIT TAIL PLATING TYPE	SHORT DETECT CONTACT
10035515-101	TIN/LEAD ALLOY OVER NICKEL	NO
10035515-101LF	TIN OVER NICKEL (LEAD FREE)	
10035515-111	TIN/LEAD ALLOY OVER NICKEL	YES (SEE NOTE 13)
10035515-111LF	TIN OVER NICKEL (LEAD FREE)	

NOTES:

1. CONNECTOR MATERIALS:
HOUSING & RETAINER: HIGH TEMP THERMOPLASTIC, NATURAL, UL94V-0
IMLA PLASTIC: HIGH TEMP THERMOPLASTIC, BLACK, UL94V-0
CONTACT: COPPER ALLOY

2. CONTACT PLATING:
SEPARABLE INTERFACE:
PERFORMANCE-BASED PLATING, QUALIFIED TO MEET THE
REQUIREMENTS OF FCI PRODUCT SPECIFICATION GS-12-239,
INCLUDING TELCORDIA GR-1217-CORE (NOVEMBER 1995)
CENTRAL OFFICE
PRESS-FIT TAILS: SEE TABLE

3. PRODUCT SPECIFICATION: GS-12-239

4. APPLICATION SPECIFICATION: GS-20-035

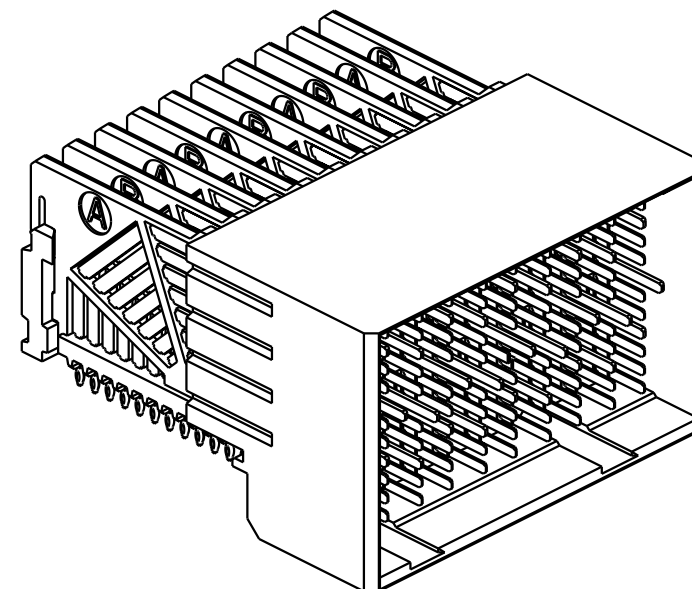
5. PRODUCT MARKING, (PART NUMBER & LOT CODE), ON THIS SURFACE

6. REFER TO CUSTOMER DRAWING 10035911 FOR INFORMATION REGARDING
PCB LAYOUT OF POWER AND GUIDE MODULES RELATIVE TO SIGNAL MODULES

7. POSITIONS F OF ODD NUMBERED COLUMNS AND POSITIONS G
OF EVEN NUMBERED COLUMNS CORRESPOND TO EARLY MATE HEADER PINS

8. THERE IS NO GROUND BUSSING WITHIN THE CONNECTOR SYSTEM

9. REFER TO CUSTOMER DRAWING 10045979 FOR INFORMATION ON PCB HOLE
DIAMETERS AND PLATING OPTIONS.



10. THIS PRODUCT MEETS EUROPEAN UNION DIRECTIVES
AND OTHER COUNTRY REGULATIONS AS DESCRIBED IN
GS-22-008.

11. THE HOUSING WILL WITHSTAND EXPOSURE TO 260°C
PEAK TEMPERATURE FOR 40 SECONDS IN A CONVECTION,
INFRA-RED OR VAPOR PHASE REFLOW OVEN.

12. PACKAGING MEETS GS-14-920 LEAD FREE LABELING
SPECIFICATION.

13. MATING PIN F6 HAS 0.5mm LESS NOMINAL WIPE THAN
THE SHORTEST SIGNAL PIN.



title AirMax VS R/A HEADER ASSY
PRESS-FIT, 120 POS, 32MM
catalog no -

dwg no 10035515

Rev.
J

CUSTOMER sheet 5 of 5