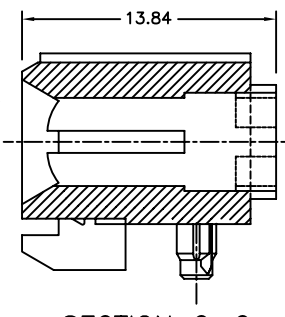
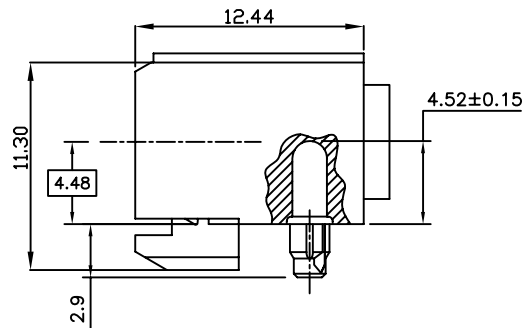
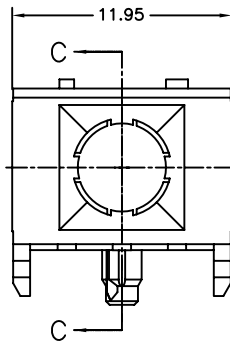
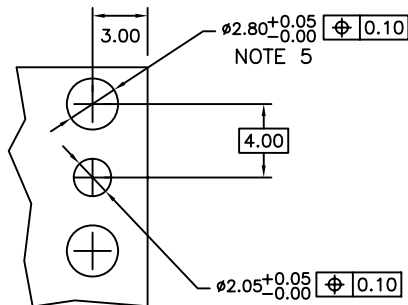
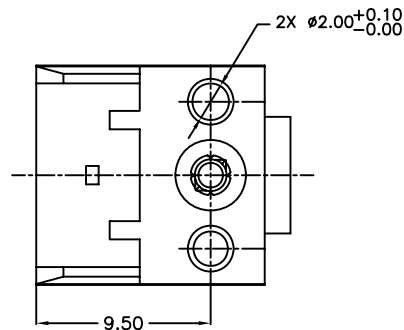


PRODUCT NO.
10022089-101
10022089-101LF



SECTION C-C



RECOMMENDED PC BOARD
LAYOUT
(COMPONENT SIDE)

NOTES:

- ① MATERIAL: LIQUID CRYSTAL POLYMER 30% GLASS
FLAME RETARDANT ACC. UL 94-V0
COLOR NATURAL.
2. HOUSING TO BE MOUNTED TO THE PCB USING
NO.3 DIAMETER SELF-TAPPING SCREWS.
3. HOUSING IS TO BE USED WITH WALL-LESS HEADER
HOUSING, P/N 63735-101, TO AVOID INTERFERENCE
W/ MOUNTING SCREWS.
4. PRODUCT MAY NOT BE STACKABLE DEPENDING UPON
THE HEAD SIZE OF THE MOUNTING SCREW USED.
5. FOR LEAD FREE NUMBERS, ADD AN 'LF' SUFFIX. PART
NUMBERS THAT DO NOT END IN 'LF' ARE LEAD FREE.
EXAMPLE: 10022089-101LF
6. THE PRODUCTS WHERE THE PART NUMBER ENDS IN LF
AND THE NONE LF PART NUMBERS MEET THE EUROPEAN
UNION DIRECTIVES AND OTHER COUNTRY REGULATIONS
AS DESCRIBED IN GS-22-008.
7. ALL PRODUCTS WILL WITHSTAND EXPOSURE TO
260°C FOR 60 SECONDS IN A CONVECTION,
INFRA-RED OR VAPOUR PHASE REFLOW OVEN.

mat'l. code				surface		tolerance	projection	product family	
SEE NOTES				ASME Y14.5		ASME Y14.5		METRAL (tm)	
ltr	ec'n no	dr	date	angles	to	tolerances unless otherwise specified	MM	title	
A	V04-0030	HTB	01/13/04			X*3		R/A FEMALE HSG.	
B	V06-0077	JRV	3/14/06			XX*18		HYBRID 12mm PRESS PEG	
C	V06-0748	JRV	2006-08-07	0°±2'		XXX*051	scale 1:1	dwg no	
				dr	T. BRUNGARD	7/25/03		sheet 1 of 1	
				engr	M. GRAY	7/25/03		10022089	
				chr	M. GRAY	7/25/03		size	
				appd	M. GRAY	7/25/03		A4	
sheet	revision	c						type	
index	sheet	1						CUSTOMER Drawing	