

FCJ
FCconnect.com
Copyright FCJ

PRODUCT NUMBER

XXXXX-YYY HLF

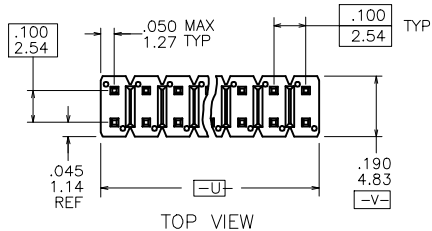
LEAD FREE OPTION
SEE NOTE 1,7

HIGH TEMPERATURE PLASTIC
SEE NOTE 1

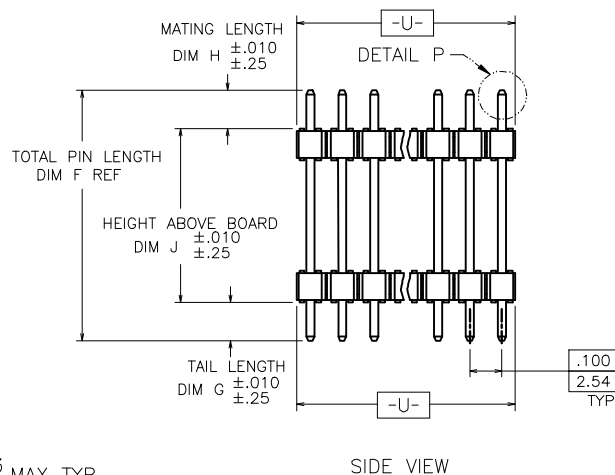
NO OF
POSITIONS
SEE NOTE 1

PIN PLATING
SEE SHEET 2

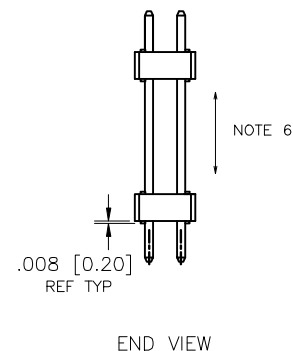
BASE PART NO.



TOP VIEW



SIDE VIEW



END VIEW

NOTE 4
Ø .020/0.51 (M) U (M) V (S)

□ .025±.001
0.64±0.03
TYP

□ .013
0.33 MAX TYP

25°±5°TYP
4 SIDES

DETAIL P
TYP BOTH ENDS

mat'l. code SEE NOTES 2 & 3				surface ISO 1302 ✓	tolerance ISO 406 ISO 1101	projection INCH/MM	product family BERGSTIK
ltr	ecn no	dr	date	tolerances unless otherwise specified		scale 1:1	title BERGSTIK® II HDR D/R .100 CTR. R.R. TRACK
CN	V04-0104	HTB	02/02/04	angles	linear		dwg no 78563 sheet 1 of 7 size A3
CP	M04-0234	HTB	12/29/04	linear	linear		
CR	M05-0072	MHT	5/05/05	σ±2	linear		
CS	N06-0165	MHT	7/04/06	dr	T. BREWBAKER		
CT	M06-0269	AEA	7/14/06	engr	T. HANNA	FCJ	type Product Customer Drawing
CU	M06-0307	MHT	8/08/06	chr	T. HANNA		
CV	M08-0291	MHT	10/08/08	appd	T. HANNA		
sheet index	revision	CV	CV	CV	CV	CV	
sheet	1	2	3	4	5	6	7

PIN PLATING CODES:		
XXXXX-1YY	30u"/0.76u MIN (SEE NOTE 8) OVER 50u"/1.27u MIN Ni	
XXXXX-2YY	15u"/0.38u MIN (SEE NOTE 8) OVER 50u"/1.27u MIN Ni	
XXXXX-3YY	50u"/1.27u MIN Au OVER 50u"/1.27u MIN Ni	
XXXXX-4YY	TIN LEAD OPTION	120u"/3.05u MIN 93/7 SnPb OVER 50u"/1.27u MIN Ni
	LF OPTION	100u"/2.54u MIN Sn OVER 50u"/1.27u MIN Ni (SEE NOTE 1,9)
XXXXX-5YY	15u"/0.38u MIN (SEE NOTE 8) OVER 50u"/1.27u MIN Ni	
XXXXX-6YY	30u"/0.76u MIN (SEE NOTE 8) OVER 50u"/1.27u MIN Ni	
XXXXX-7YY	30u"/0.76u MIN Au OVER 50u"/1.27u MIN Ni	
XXXXX-8YY	15u"/0.38u MIN Au OVER 50u"/1.27u MIN Ni	
XXXXX-9YY	15u"/0.38u MIN GXT OVER 50u"/1.27u MIN Ni	
XXXXX-0YY	30u"/0.76u MIN GXT OVER 50u"/1.27u MIN Ni	

NOTES

(1) PART NUMBER OPTIONS:

PIN PLATING CODES (SEE ABOVE)

HIGH TEMP. MATERIAL:

FOR HIGH-TEMPERATURE APPLICATIONS, SPECIFY AN "H" AT THE END OF THE PART NUMBER, AND PCT WILL BE SUPPLIED.

NUMBER OF POSITION:

ANY NUMBER OF POSITIONS FROM 4 (2X2) THRU 72 (2X36).

PACKAGING:

PACKAGED IN POLY BAGS.

LEAD FREE:

ADD "HLF" SUFFIX AT THE END OF PART NUMBER FOR LEAD FREE OPTION, NOT AVAILABLE FOR -5YY,-5YH,-6YY & -6YH.

(2) BODY MATERIAL:

MANUFACTURER'S OPTION OF NYLON OR PCT, GLASS FIBER REINFORCED, FLAME RETARDENT PER UL-94V-0.

COLOR: BLACK OR

MINERAL FILLED LCP FLAME RETARDENT PER UL-94V-0.

COLOR: BLACK

PART NUMBERS WITH "H" SUFFIX WILL WITHSTAND EXPOSURE TO 260°C PEAK TEMPERATURE FOR 20 SECONDS IN WAVE SOLDER, INFRA-RED OR VAPOR PHASE SOLDER PROCESS.

PART NUMBERS WITHOUT "H" SUFFIX WILL WITHSTAND EXPOSURE TO 260°C PEAK TEMPERATURE FOR WAVE SOLDER PROCESS.

(3) PIN MATERIAL: PHOS-BRONZE.

(4) MEASURED WITH PART IN RESTRAINED CONDITION.

5. TWO SIDES OF PIN TIPS NOT PLATED. TYPICAL BOTH ENDS.

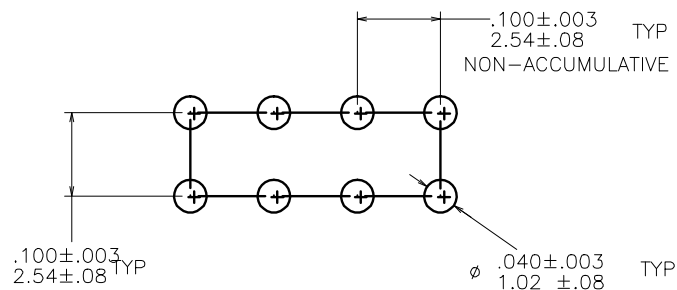
(6) 2LBS/0.9KG MIN PIN RETENTION IN EITHER DIRECTION.

(7) THESE PRODUCTS MEETS EUROPEAN UNION DIRECTIVES AND OTHER COUNTRY REGULATION AS DESCRIBED IN GS-22-008.

(8) PLATING OPTIONS:

MAY BE EITHER GOLD OR GXT PLATED AT MANUFACTURER'S OPTION.

(9) "THIS PRODUCT HAS 100% TIN PLATING IN THE INTERFACE AND HAS NOT BEEN TESTED FOR WHISKER GROWTH IN ALL INTERCONNECT ENVIRONMENTS."



DOUBLE ROW
RECOMMENDED HOLE PATTERN

mat'l code SEE NOTES 2 & 3				surface ISO 1902	tolerance ISO 406 ISO 1101	projection ISO 1101	product family BERGSTIK
ltr	ecn no	dr	date	tolerances unless otherwise specified		INCH/MM	title BERGSTIK® II HDR D/R .100 CTR. R.R. TRACK
cv				angles	linear		
				0°±2'	XXX1.01/XX0.3 XXX1.006/XX0.13 XXX1.0020/XXX0.051	scale 1:1	dwg no
		dr	T. BREWBAKER	1/31/95			sheet 2 of 7
		engr	T. HANNA	1/31/95			size
		chr	T. HANNA	1/31/95			A3
		appd	T. HANNA	1/31/95			type
sheet	revision						Product Customer Drawing
index	sheet						



Copyright FCI

PRODUCT NUMBER	TOTAL PIN LGTH		TAIL LENGTH		MATING LENGTH		HEIGHT ABOVE BOARD	
	DIM F	DIM F	DIM G	DIM G	DIM H	DIM H	DIM J	DIM J
	ENGLISH	METRIC	ENGLISH	METRIC	ENGLISH	METRIC	ENGLISH	METRIC
58478-YYYH	0.808	20.52	0.120	3.05	0.268	6.81	0.420	10.67
58479-YYYH	1.030	26.16	0.200	5.08	0.360	9.14	0.470	11.94
60056-YYYH	0.425	10.80	0.150	3.81	0.065	1.65	0.210	5.33
71282-YYYH	0.543	13.79	0.102	2.59	0.213	5.41	0.228	5.79
71284-YYYH	0.920	23.37	0.122	3.10	0.372	9.45	0.426	10.82
71285-YYYH	1.075	27.31	0.110	2.79	0.350	8.89	0.615	15.62
71704-YYYH	1.145	29.08	0.354	8.99	0.354	8.99	0.437	11.10
71725-YYYH	1.110	28.19	0.110	2.79	0.370	9.40	0.630	16.00
71726-YYYH	1.380	35.05	0.315	8.00	0.315	8.00	0.750	19.05
71728-YYYH	1.200	30.48	0.100	2.54	0.254	6.45	0.846	21.49
71739-YYYH	0.945	24.00	0.110	2.79	0.110	2.79	0.725	18.42
71741-YYYH	1.340	34.04	0.110	2.79	0.330	8.38	0.900	22.86
71758-YYYH	1.123	28.52	0.394	10.01	0.394	10.01	0.335	8.51
71797-YYYH	0.705	17.91	0.125	3.18	0.240	6.10	0.340	8.64
72302-YYYH	1.176	29.87	0.100	2.54	0.230	5.84	0.846	21.49
72307-YYYH	0.880	22.35	0.250	6.35	0.330	8.38	0.300	7.62
72334-YYYH	0.775	19.69	0.120	3.05	0.230	5.84	0.425	10.80
72335-YYYH	1.250	31.75	0.120	3.05	0.230	5.84	0.900	22.86
72345-YYYH	0.630	16.00	0.100	2.54	0.230	5.84	0.300	7.62
72420-YYYH	1.158	29.41	0.100	2.54	0.290	7.37	0.768	19.51
72431-YYYH	1.150	29.21	0.262	6.65	0.262	6.65	0.626	15.90
72461-YYYH	1.190	30.23	0.090	2.29	0.350	8.89	0.750	19.05
72471-YYYH	1.286	32.66	0.130	3.30	0.406	10.31	0.750	19.05
72509-YYYH	1.370	34.80	0.235	5.97	0.235	5.97	0.900	22.86
72514-YYYH	1.220	30.99	0.120	3.05	0.350	8.89	0.750	19.05
72521-YYYH	0.900	22.86	0.200	5.08	0.300	7.62	0.400	10.16
73428-YYYH	1.330	33.78	0.330	8.38	0.727	18.47	0.273	6.93
73500-YYYH	0.870	22.10	0.300	7.62	0.300	7.62	0.270	6.86

LF
OPTION

NOTE 1,7

NOTE 1,7



mat'l. code SEE NOTES 2 & 3				Surface ISO 1302		Tolerance ISO 406 ISO 1101		projection 		product family BERGSTIK	
ltr	ecr no	dr	date	Tolerances unless otherwise specified		linear XX±.01/XX±.03 XXX±.005/XXX±.013 XXXX±.0020/XXXX±.0051		INCH/MM scale 1:1		title BERGSTIK® II HDR D/R .100 CTR. R.R. TRACK	
cv				angles		0°±2'		FCI		dwg no 78563	
				dr		T. BREWBAKER 1/31/95				sheet 3 of 7 size A3	
				engr		T. HANNA 1/31/95					
				chr		T. HANNA 1/31/95					
				appd		T. HANNA 1/31/95				type Product Customer Drawing	
sheet index	revision sheet										



FCIconnect.com

Copyright FCI

PRODUCT NUMBER	1 TOTAL PIN LGTH		2 TAIL LENGTH		3 MATING LENGTH		4 HEIGHT ABOVE BOARD		LF OPTION
	DIM F	DIM F	DIM G	DIM G	DIM H	DIM H	DIM J	DIM J	
	ENGLISH	METRIC	ENGLISH	METRIC	ENGLISH	METRIC	ENGLISH	METRIC	
73501-YYYH	0.668	16.97	0.098	2.49	0.157	3.99	0.413	10.49	NOTE 1,7
73697-YYYH	1.435	36.45	0.300	7.62	0.525	13.34	0.610	15.49	
73699-YYYH	0.952	24.18	0.122	3.10	0.228	5.79	0.602	15.29	
74381-YYYH	0.975	24.77	0.360	9.14	0.360	9.14	0.255	6.48	
74455-YYYH	1.050	26.67	0.230	5.84	0.320	8.13	0.500	12.70	
74465-YYYH	0.945	24.00	0.110	2.79	0.285	7.24	0.550	13.97	
74466-YYYH	0.930	23.62	0.355	9.02	0.360	9.14	0.215	5.46	
74467-YYYH	0.930	23.62	0.365	9.27	0.365	9.27	0.200	5.08	
74928-YYYH	1.164	29.56	0.200	5.08	0.200	5.08	0.764	19.41	
74997-YYYH	1.208	30.68	0.150	3.81	0.290	7.37	0.768	19.51	
78563-YYY	0.930	23.62	0.340	8.64	0.340	8.64	0.250	6.35	
78564-YYY	1.230	31.24	0.390	9.91	0.390	9.91	0.450	11.43	
78936-YYY	0.785	19.94	0.120	3.05	0.120	3.05	0.545	13.84	
78937-YYY	0.490	12.45	0.120	3.05	0.120	3.05	0.250	6.35	
84693-YYYH	0.975	24.77	0.380	9.65	0.380	9.65	0.215	5.46	
84819-YYYH	0.730	18.54	0.110	2.79	0.170	4.32	0.450	11.43	
84950-YYYH	1.250	31.75	0.120	3.05	0.350	8.89	0.780	19.81	
86816-YYY	0.925	23.50	0.120	3.05	0.120	3.05	0.685	17.40	
86824-YYY	0.760	19.30	0.120	3.05	0.250	6.35	0.390	9.91	
86826-YYY	0.700	17.78	0.120	3.05	0.330	8.38	0.250	6.35	
86831-YYY	0.525	13.34	0.100	2.54	0.225	5.72	0.200	5.08	
86869-YYY	1.020	25.91	0.120	3.05	0.230	5.84	0.670	17.02	
87039-YYY	1.240	31.50	0.120	3.05	0.120	3.05	1.000	25.40	
87053-YYY	0.990	25.15	0.120	3.05	0.120	3.05	0.750	19.05	
87323-YYY	1.375	34.93	0.219	5.56	0.406	10.31	0.750	19.05	NOTE 1,7

mat'l. code SEE NOTES 2 & 3				surface ISO 1302	tolerance ISO 406 ISO 1101	projection	product family BERGSTIK		
ltr	ec'n no	dr	date	tolerances unless otherwise specified		 INCH/MM	title BERGSTIK® II HDR D/R .100 CTR. R.R. TRACK		
cv				angles	linear				
					XXX.01/XX0.3 XXX.005/XX0.13 XXX.0020/XXX0.051	scale 1:1			
				dr	T. BREWBAKER 1/31/95		dwg no	sheet 4 of 7	size
				engr	T. HANNA 1/31/95		78563	A3	
				chr	T. HANNA 1/31/95				
				appd	T. HANNA 1/31/95				
sheet index	revision	sheet					type Product Customer Drawing		



Copyright FCJ

PRODUCT NUMBER	TOTAL PIN LGTH		TAIL LENGTH		MATING LENGTH		HEIGHT ABOVE BOARD		LF OPTION	
	DIM F	DIM F	DIM G	DIM G	DIM H	DIM H	DIM J	DIM J		
	ENGLISH	METRIC	ENGLISH	METRIC	ENGLISH	METRIC	ENGLISH	METRIC		
87324-YYY	1.218	30.94	0.406	10.31	0.406	10.31	0.406	10.31	NOTE 1,7	
87346-YYY	0.930	23.62	0.100	2.54	0.330	8.38	0.500	12.70		
87347-YYY	0.890	22.61	0.110	2.79	0.280	7.11	0.500	12.70		
87501-XXYH	1.230	31.24	0.330	8.38	0.100	2.54	0.800	20.32		
87511-XXYH	1.130	28.70	0.105	2.67	0.325	8.26	0.700	17.78		
87512-XXYH	1.030	26.16	0.120	3.05	0.410	10.41	0.500	12.70		
87571-XXYH	0.930	23.62	0.250	6.35	0.250	6.35	0.430	10.92		
87594-XXY	1.190	30.23	0.200	5.08	0.120	3.05	0.870	22.10		
87887-XXY	0.940	23.88	0.120	3.05	0.395	10.03	0.425	10.80		
87899-XXY	1.040	26.42	0.120	3.05	0.370	9.40	0.550	13.97		
89444-XXY	0.930	23.62	0.120	3.05	0.310	7.87	0.500	12.70		
89637-XXY	1.260	32.00	0.118	3.00	0.315	8.00	0.827	21.01		
89638-XXY	1.040	26.42	0.120	3.05	0.270	6.86	0.650	16.51		
90237-XXY	0.813	20.65	0.120	3.05	0.318	8.08	0.375	9.53		
90608-XXY	0.595	15.11	0.120	3.05	0.255	6.48	0.220	5.59		
90806-XXY	1.400	35.56	0.360	9.14	0.200	5.08	0.840	21.34		
91507-XXYH	0.610	15.49	0.120	3.05	0.240	6.10	0.250	6.35		
91508-XXYH	0.888	22.56	0.120	3.05	0.500	12.70	0.268	6.81		
91509-XXYH	1.260	32.00	0.120	3.05	0.500	12.70	0.640	16.26		
91510-XXYH	0.960	24.38	0.120	3.05	0.500	12.70	0.340	8.64		
91862-XXYH	0.767	19.48	0.120	3.05	0.297	7.54	0.350	8.89		
91863-XXYH	0.792	20.12	0.120	3.05	0.297	7.54	0.375	9.53		NOTE 1,7

mat'l. code SEE NOTES 2 & 3				surface ISO 1302	tolerance ISO 406 ISO 1101	projection 	product family BERGSTIK	
ltr	ecn no	dr	date	tolerances unless otherwise specified			title	
cv				angles	linear		BERGSTIK® II HDR D/R	
				0°±2'	XXX±.01/XX±0.3 XXX±.005/XX±0.13 XXX±.0020/XXX±0.051		.100 CTR. R.R. TRACK	
				dr	T. BREWBAKER	1/31/95	dwg no	sheet 5 of 7 size
				engr	T. HANNA	1/31/95	78563	A3
				chr	T. HANNA	1/31/95	type Product Customer Drawing	
				appd	T. HANNA	1/31/95		
sheet index	revision	sheet						



Copyright FCJ

PRODUCT NUMBER	1 TOTAL PIN LGTH		2 TAIL LENGTH		3 MATING LENGTH		4 HEIGHT ABOVE BOARD		LF OPTION
	DIM F	DIM F	DIM G	DIM G	DIM H	DIM H	DIM J	DIM J	
	ENGLISH	METRIC	ENGLISH	METRIC	ENGLISH	METRIC	ENGLISH	METRIC	
92002-YYYH	0.980	24.89	0.120	3.05	0.410	10.41	0.450	11.43	NOTE 1,7
92012-YYYH	0.940	23.88	0.090	2.29	0.350	8.89	0.500	12.70	
92013-YYYH	1.450	36.83	0.120	3.05	0.330	8.38	1.000	25.40	
92094-YYYH	1.030	26.16	0.180	4.57	0.180	4.57	0.670	17.02	
92628-YYYH	1.160	29.46	0.120	3.05	0.230	5.84	0.810	20.57	
92900-YYYH	0.470	11.94	0.110	2.79	0.110	2.79	0.250	6.35	
93223-YYYH	0.635	16.13	0.090	2.29	0.230	5.84	0.315	8.00	
94046-YYYH	0.620	15.75	0.120	3.05	0.250	6.35	0.250	6.35	
94082-YYYH	0.838	21.29	0.120	3.05	0.318	8.08	0.400	10.16	
94083-YYYH	1.398	35.51	0.120	3.05	0.318	8.08	0.960	24.38	
94084-YYYH	0.775	19.69	0.130	3.30	0.265	6.73	0.380	9.65	
94085-YYYH	0.825	20.96	0.130	3.30	0.265	6.73	0.430	10.92	
94550-YYYH	1.110	28.19	0.125	3.18	0.300	7.62	0.685	17.40	
94551-YYYH	1.120	28.45	0.415	10.54	0.415	10.54	0.290	7.37	
94552-YYYH	1.230	31.24	0.110	2.79	0.205	5.21	0.915	23.24	
94553-YYYH	1.230	31.24	0.120	3.05	0.310	7.87	0.800	20.32	
94554-YYYH	1.250	31.75	0.120	3.05	0.330	8.38	0.800	20.32	
94555-YYYH	1.270	32.26	0.385	9.78	0.385	9.78	0.500	12.70	
94605-YYYH	0.830	21.08	0.110	2.79	0.270	6.86	0.450	11.43	
94620-YYYH	1.002	25.45	0.120	3.05	0.382	9.70	0.500	12.70	
94621-YYYH	0.590	14.99	0.100	2.54	0.260	6.60	0.230	5.84	
94632-YYYH	1.040	26.42	0.110	2.79	0.305	7.75	0.625	15.88	
94672-YYYH	0.750	19.05	0.120	3.05	0.335	8.51	0.295	7.49	
95036-YYYH	1.304	33.12	0.290	7.37	0.290	7.37	0.724	18.39	
95063-YYYH	0.902	22.91	0.135	3.43	0.330	8.38	0.437	11.10	
95064-YYYH	0.630	16.00	0.220	5.59	0.120	3.05	0.290	7.37	
95088-YYYH	1.100	27.94	0.300	7.62	0.300	7.62	0.500	12.70	

mat'l. code SEE NOTES 2 & 3				surface ISO 1302	tolerance ISO 406 ISO 1101	projection 	product family BERGSTIK	
ltr	ecr no	dr	date	tolerances unless otherwise specified			title BERGSTIK® II HDR D/R .100 CTR. R.R. TRACK	
cv				angles	linear		sheet 6 of 7 size	
				0°±2'		scale 1:1	A3	
				dr	T. BREWBAKER	1/31/95	dwg no 78563	
				engr	T. HANNA	1/31/95	type Product Customer Drawing	
				chr	T. HANNA	1/31/95		
				appd	T. HANNA	1/31/95		
sheet	revision							
index	sheet							



Copyright FCJ

PRODUCT NUMBER	TOTAL PIN LGTH		TAIL LENGTH		MATING LENGTH		HEIGHT ABOVE BOARD	
	DIM F	DIM F	DIM G	DIM G	DIM H	DIM H	DIM J	DIM J
	ENGLISH	METRIC	ENGLISH	METRIC	ENGLISH	METRIC	ENGLISH	METRIC
95116-YYYH	1.430	36.32	0.110	2.79	0.445	11.30	0.875	22.23
95124-YYYH	0.838	21.29	0.112	2.84	0.289	7.34	0.437	11.10
95129-YYYH	1.330	33.78	0.060	1.52	0.350	8.89	0.920	23.37
95616-YYYH	1.253	31.83	0.170	4.32	0.343	8.71	0.740	18.80
95656-YYYH	0.910	23.11	0.230	5.84	0.230	5.84	0.450	11.43
95657-YYYH	0.980	24.89	0.300	7.62	0.230	5.84	0.450	11.43
95685-YYYH	0.895	22.73	0.340	8.64	0.340	8.64	0.215	5.46
95686-YYYH	0.900	22.86	0.350	8.89	0.350	8.89	0.200	5.08
95711-YYYH	1.030	26.16	0.180	4.57	0.100	2.54	0.750	19.05
95731-YYYH	1.335	33.91	0.110	2.79	0.395	10.03	0.830	21.08
95762-YYYH	1.050	26.67	0.150	3.81	0.230	5.84	0.670	17.02
95787-YYYH	0.930	23.62	0.100	2.54	0.225	5.72	0.605	15.37
95788-YYYH	1.130	28.70	0.155	3.94	0.175	4.45	0.800	20.32
98048-YYYH	0.609	15.47	0.120	3.05	0.230	5.84	0.259	6.58
98049-YYYH	0.930	23.62	0.090	2.29	0.210	5.33	0.630	16.00
98070-YYYH	1.086	27.58	0.125	3.18	0.232	5.89	0.728	18.49
98141-YYYH	0.530	13.46	0.120	3.05	0.120	3.05	0.290	7.37
98216-YYYH	0.850	21.59	0.120	3.05	0.120	3.05	0.610	15.49
98836-YYYH	0.830	21.08	0.150	3.81	0.220	5.59	0.460	11.68
10007210-YYYH	1.130	28.70	0.220	5.59	0.460	11.68	0.450	11.43
10017135-YYYH	1.330	33.78	0.285	7.24	0.595	15.11	0.450	11.43
10017288-YYYH	1.331	33.81	0.160	4.06	0.210	5.33	0.961	24.41
10033859-YYYH	1.130	28.70	0.190	4.83	0.490	12.45	0.450	11.43
10037932-YYYH	1.230	31.24	0.190	4.83	0.590	14.99	0.450	11.43
10070373-YYYH	1.338	34.00	0.125	3.20	0.275	7.00	0.937	23.80

LF
OPTION

NOTE 1,7

mat'l. code SEE NOTES 2 & 3				Surface ISO 1302 <input checked="" type="checkbox"/>		Tolerance ISO 406 ISO 1101		projection 		product family BERGSTIK	
ltr	ecn no	dr	date	tolerances unless otherwise specified						title BERGSTIK® II HDR D/R .100 CTR. R.R. TRACK	
cv				angles	linear	$\frac{.001 \pm .01 / .01 \pm .03}{.001 \pm .005 / .01 \pm .013}$ $\frac{.001 \pm .0020 / .001 \pm .0051}{.001 \pm .0020 / .001 \pm .0051}$					
				0° ± 2°				scale 1:1			
				dr	T. BREWBAKER	1/31/95			dwg no		sheet 7 of 7 size
				engr	T. HANNA	1/31/95			78563		A3
				chr	T. HANNA	1/31/95					
				appd	T. HANNA	1/31/95			type		Product Customer Drawing
sheet index	revision sheet										