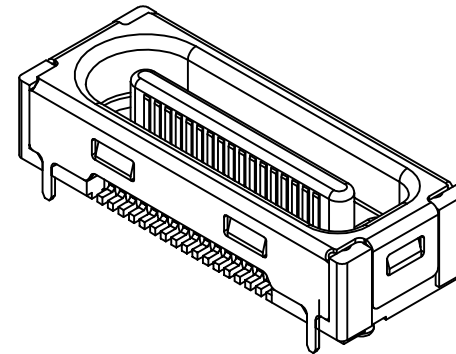
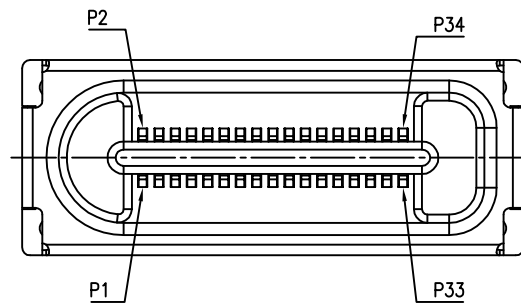


Tous droits strictement réservés. Reproduction ou communication a des tiers interdite sous quelque forme que ce soit sans autorisation écrite du propriétaire. Propriété de © FCI ELECTRONICS. Droits de reproduction FCI ELECTRONICS INC.

FCI

All rights strictly reserved. Reproduction or issue to third parties in any form whatever is not permitted without written authority from the proprietor. Property of © FCI ELECTRONICS. Copyright FCI ELECTRONICS INC.

PRODUCT NO.
0016521-XXXXXXX



NOTE :

1. MATERIAL :

HOUSING : HIGH TEMPERATURE THERMOPLASTIC,
UL 94 V-0 FLAME RETARDANT, BLACK.
BURR 0.03 MAX.

TERMINAL : COPPER ALLOY.

PLATING SPEC. AS BELOW :

Ni 50u" UNDER PLATED.

Au 30u" OVER ZONE A. (ONE SIDE)

Sn 120u" OVER ZONE B.

SHIELD : STEEL, NICKEL PLATE 30u" ALL OVER.

2. PRODUCT PERFORMANCE PER SPEC. GS-12-205.

3. PRODUCT PACKAGING PER SPEC. GS-14-846.

4. PRODUCT DATE CODE :

X X X
WEEK
YEAR

5. PART NUMBER SCHEME :

10016521-X X X X X X X

"LF"

PROFILE HEIGHT

1 H= 4.3mm

SEE FIG 1

PACKAGING

2 TAPE AND REEL

PIN NUMBER

034 34 PIN

PLASTIC COLOR

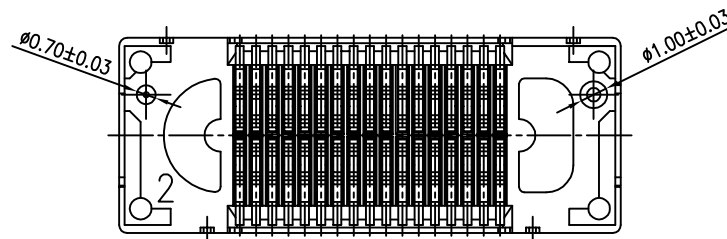
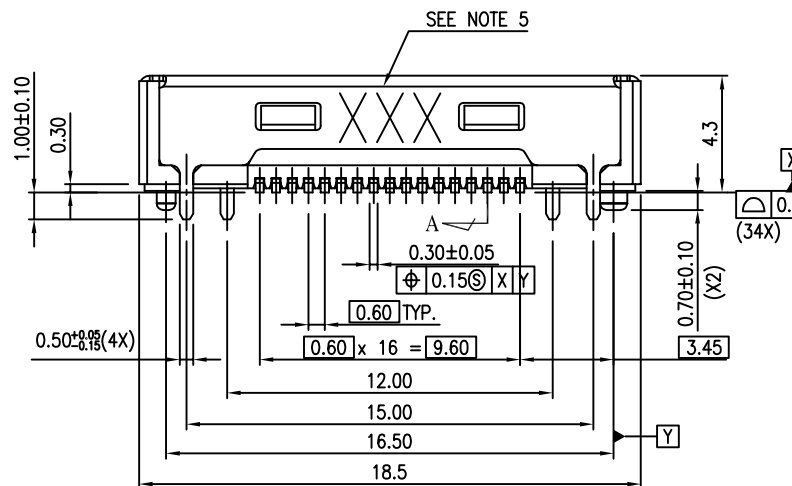
1 BLACK

6. THIS PRODUCTS MEETS EUROPEAN UNION DIRECTIVE AND
OTHER COUNTRY REGULATIONS AS DESCRIBED IN GS-22-008.

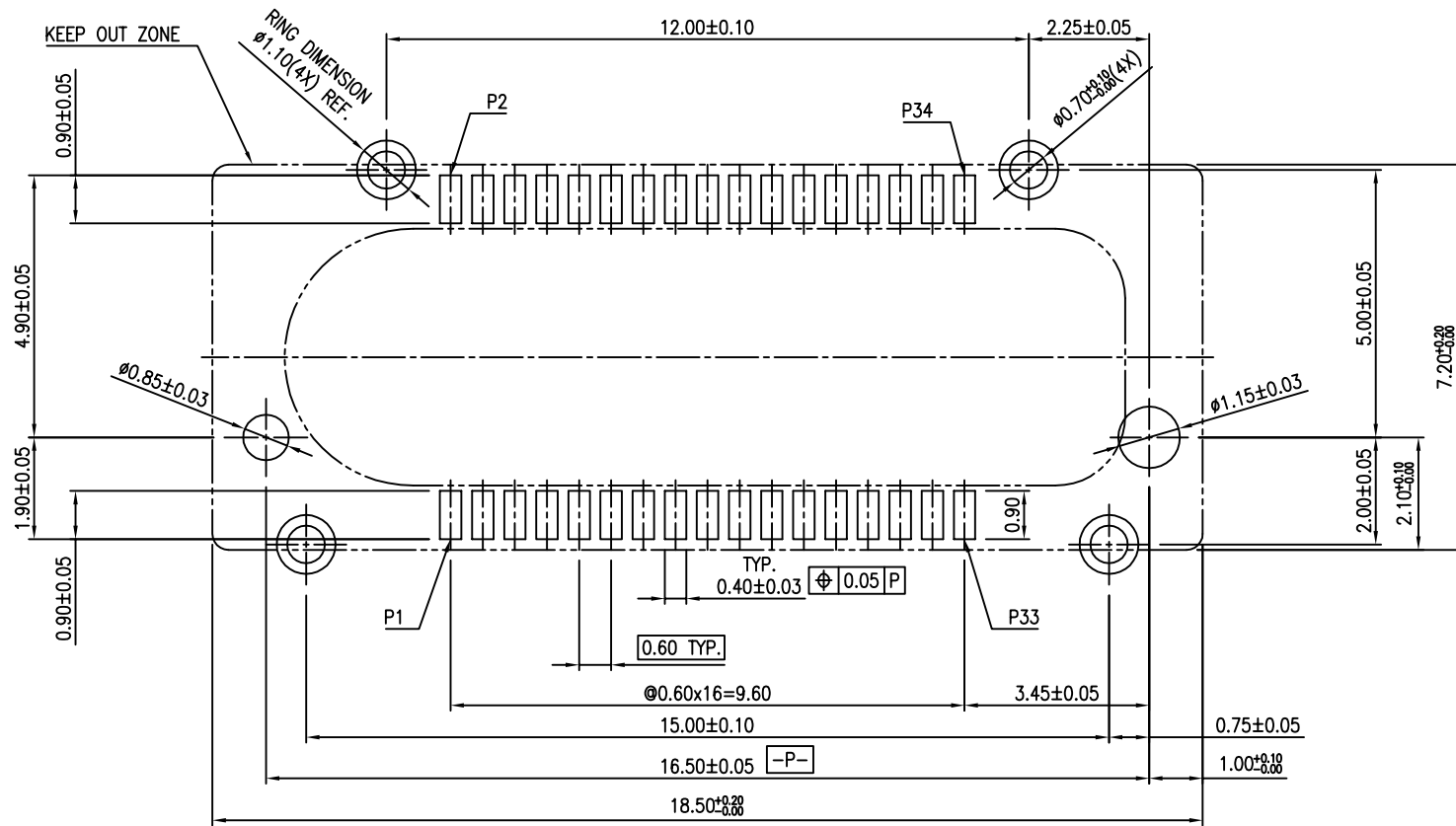
7. THE HOUSING WILL WITHSTAND EXPOSURE
TO 260° PEAK TEMPERATURE FOR 10 SECONDS
IN A CONVECTION INFRA-RED OR VAPOR PHASE
REFLOW OVEN.

MATED PART	RECEPTACLE	MATING H = 11
PART NO.	10016521-103421LF	
PROFILE H	10.9	

FIG 1



mat'l. code				tolerances unless otherwise specified		CUSTOMER COPY		FCI	
ltr	ecn no	dr	date	linear	.X ± .5	projection	title	www.fciconnect.com	
A	T03-0412	RC	9/18/03		.XX ± .20		34P BTB DOCKING CONNECTOR		
B	T03-0571	LH	02/02/04		.XXX ± .100		PLUG ASSEMBLY		
C	0605-0174	LH	06/23/05	angles	0° ± 2°		product family BOARD TO BOARD		
D	0606-0452	CL	11/07/06	dr	Richard Chiu 8/01/03	mm	size	dwg no	code
				enrg	Richard Chiu 8/01/03	scale	A3	10016521	1 of 3
				chr	Paul Wang 8/01/03				
				appd	JENN TSAO 8/01/03				
sheet index	revision sheet	D	D	1	2				



RECOMMENDED PCB LAYOUT

mat'l. code				tolerances unless otherwise specified		CUSTOMER COPY		FCI		www.fciconnect.com	
ltr	ecr no	dr	date	linear	.X \pm .5	projection				title 34P BTB DOCKING CONNECTOR PLUG PCB LAYOUT	
D				angles	.XX \pm .20 .XXX \pm .100 0° \pm 2°						
		dr	Richard Chiu	8/01/03'		mm		product family BOARD TO BOARD		code -	
		engr	Richard Chiu	8/01/03'							
		chr	Paul Wang	8/01/03'		scale		size dwg no A3 10016521		sheet 2 of 3	
		appd	JENN TSAO	8/01/03'		10:1					
sheet index	revision sheet							cage code		Printed: Apr 14, 2008	

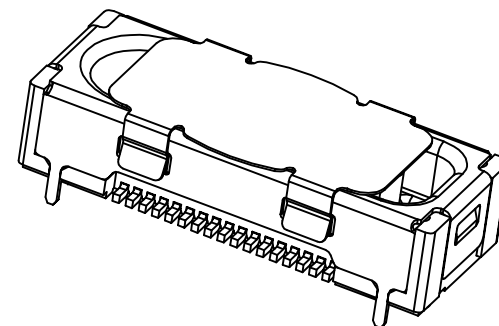
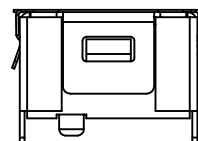
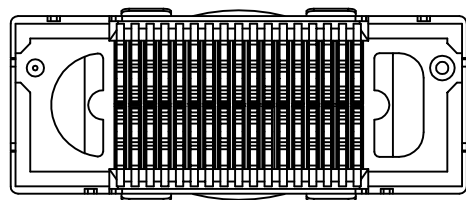
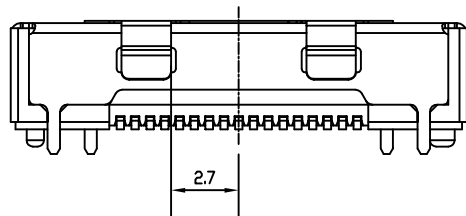
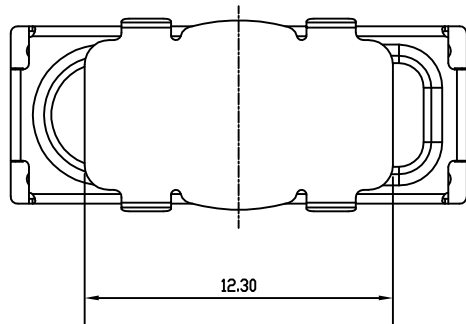
PDM: Rev:D

STATUS Released

22528

Tous droits strictement reserves. Reproduction ou communication a des tiers interdite sous quelque forme que ce soit sans autorisation ecrite du proprietaire. Propriete de c FCI ELECTRONICS. Droits de reproduction FCI ELECTRONICS INC.

All rights strictly reserved. Reproduction or issue to third parties in any form whatever is not permitted without written authority from the proprietor. Property of c FCI ELECTRONICS Copyright FCI ELECTRONICS INC.



mat'l. code				tolerances unless otherwise specified		CUSTOMER COPY		FCI	
ltr	ecn no	dr	date	linear	.X ± .5	projection		www.fciconnect.com	
D				linear	.XX ± .20		title	34P BTB DOCKING CONNECTOR	
				linear	.XXX ± .100				
				angles	0° ± 2°		product family	BOARD TO BOARD	
				dr	Richard Chiu 8/01/03'				
				engr	Richard Chiu 8/01/03'	scale	size	dwg no	code
				chr	Paul Wang 8/01/03'				
				appd	JENN TSAD 8/01/03'	10:1	A3	10016521	sheet 3 of 3
sheet index	revision sheet								